

# HEIDELBERG MO ALTRA

## Frequently Used Part Numbers

### Rollers

X07-0137	Form Roller, Soft (w/ bearings)
X07-0339	Pan Roller, Hard
X07-0433	Oscillator Roller, Hard
X07-0236	Metering Roller, Soft (w/ bearings)
X07-0534	Intermed. Roller, Soft (w/ bearings)
X07-0602	Bridge Roller

### Upgrades

XSA-XRHE260	Aux. Rider Roller Kit (Does single unit)
XSA-180351	Cylinder Guard Latch Kit (Does single unit)

### Side Frame Assemblies

XSA-010149	OPS Side Frame (Side frame, ring bushing)
XSA-010150	NOPS Side Frame w/ bearing (Side frame, ring bushing)

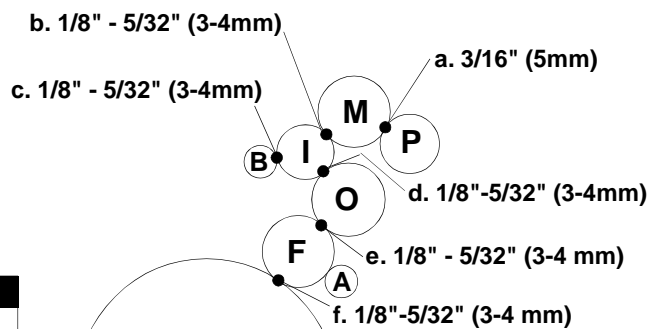
### Bearings

X06-101	Sealed Ball Bearing, Metering, Intermediate, and Bridge Rollers
X06-113	Sealed Ball Bearing, Form Roller

### Miscellaneous

XSA-1137	Water Pan Assy. (w/ pan bolts)
X99-61	Wash Up Bottle
X88-66	Installation Manual

**FAX YOUR ORDER  
TO ACCEL TOLL FREE!  
1 (800) 365-6510**



#### Adjustments

- a. Pan to Metering
- b. Metering to Intermediate
- c. Intermediate to Bridge
- d. Intermediate to Oscillator
- e. Oscillator to Form
- f. Form to Plate

#### Roller Description

P	=	Pan, Hard
M	=	Metering, Soft
I	=	Intermediate, Soft
B	=	Bridge, Hard
O	=	Oscillator, Hard
F	=	Form, Soft
A	=	Aux. Rider