

PowderPro[®] Spray System

Installation Instructions

Sakurai 272EII Low-Pile



GENERAL INFORMATION

**ATTENTION
POWDERPRO®
OWNER!**

Accel Graphic Systems provides parts and service through its authorized distributors and dealers. Therefore, all requests for parts and service should be directed to your local dealer.

The philosophy of Accel Graphic Systems is to continually improve all of its products. Written notices of changes and improvements are sent to Accel Graphic Systems' Dealers.

If the operating characteristics or the appearance of your product differs from those described in this manual, please contact your local Accel Graphic Systems Dealer for updated information and assistance.

Always update your equipment when improvements are made available, especially those related to safety.

YOUR AUTHORIZED POWDERPRO® DEALER IS:

**THE SERIAL NUMBER OF YOUR
POWDERPRO® IS:**

For technical assistance, please contact:

ACCEL GRAPHIC SYSTEMS
11103 Indian Trail
Dallas, TX 75229
(972) 484-6808
FAX (800) 365-6510
E-MAIL accel@dallas.net
WEB SITE www.accelgraphicsystems.com

PowderPro® is covered by U.S. Patents Pending



INSTALLATION

1

Disconnect the electrical power to the press.

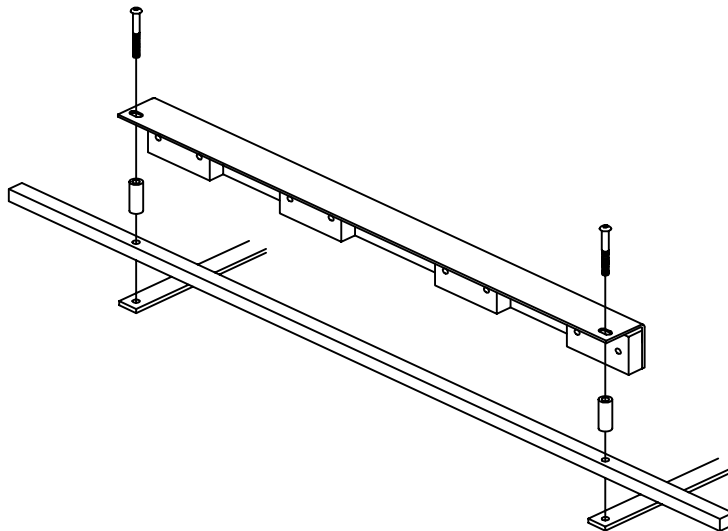
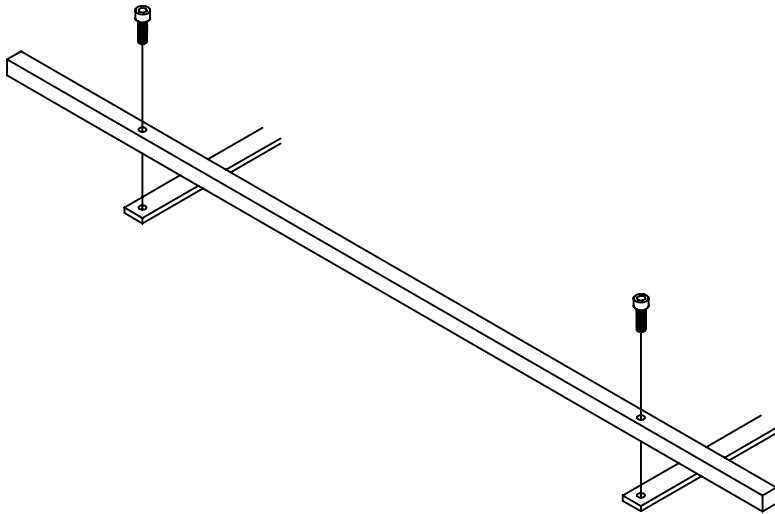
2

Remove the OPS delivery side cover.

3

Remove the original powder spray hopper/solenoid assembly from the press. To remove this assembly you will need to disconnect the hose coming from the pump, the hose going to the blow down adjustment valve, and the hose going to the spray bar. Reconnect the hose coming from the pump directly to the blow down adjustment valve. Save the bolts that secured the hopper assembly to the press frame as they will be reused.

5



INSTALLATION

4

Remove the spray bar, spray bar mounting brackets and hose from the delivery.

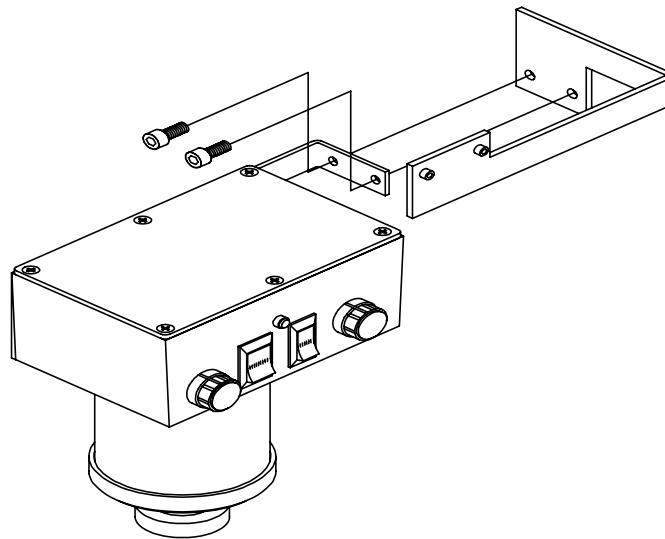
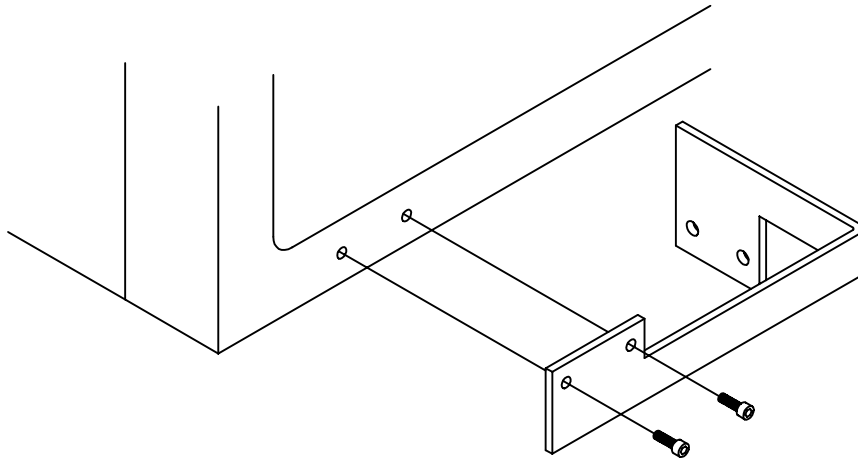
5

Remove the two bolts that secure the rear blow down bar assembly to the square tie bar in the delivery as shown in the diagram.

6

Install the new PowderPro spray head assembly to the tie bar using the supplied spacers and bolts as shown in the diagram. Route the spray hoses through the same hole in the press frame that the original spray hose went through. Use the provided tie wraps to secure the hoses away from any moving parts in the delivery.

7



INSTALLATION

7

Using the bolts saved from step 3 secure the supplied control box mounting bracket to the NOPS press frame as shown in the diagram.

8

Using the provided bolts secure the PowderPro control box to the mounting bracket installed in the previous step as shown in the diagram.

9

Remove the connectors from the wires that connected to the original powder spray solenoid. Connect the wires in the short cable coming out of the PowderPro control box to these wires using the provided closed end splice connectors.

9



INSTALLATION

10

Route the long cable coming out of the PowderPro control box through the press to the OPS and into the electrical cabinet under the main operator control panel. Connect the two wires in this cable to the positions labeled SV2 and 800 on the sequencer outputs. This connection will allow the test switch on the PowderPro control box to actuate the spray solenoid when the press is not on impression. Use the provided tie wraps to secure the cable as necessary.

11

Place the provided pump in a suitable location on the NOPS near the delivery. Route the pump cable through the press to the OPS and into the electrical cabinet beneath the platform. Connect the wires in this cable to the MC2 pump relay. Attach the pump wires to the relay, match the color of the wires to the colors of the existing wires connected to the relay except for the black pump wire which will connect to the position on the relay that has the blue labeled wire in it. **DO NOT REMOVE THE EXISTING WIRES FROM THE RELAY.** Attach the green pump wire to an existing ground terminal in the cabinet. Turn the adjustment dial on the circuit breaker up until 1.5 amps has been added to the original setting. Insert the loose cable into the wire ducts.

12

Briefly restore the power to the press. Turn the press pumps ON and verify that the pump is turning in the correct direction (pressure not vacuum). The PowderPro pump will come on whenever the press pumps are ON. If the pump is turning in the wrong direction turn the power to the press OFF and switch the black and white wires on the relay.



INSTALLATION

13

Route the provided hose from the barbed fitting on the pump to the barbed reducer fitting on the hose coming out of the PowderPro control box.

14

Connect the plastic hoses coming from the spray bar to the tubes coming out the side of the PowderPro control box. Connect the black hoses to the lower two tubes and the white hoses to the upper two tubes. The hoses are shipped longer than necessary so you will need to trim their length.

15

Replace all covers and guards that may have been removed for installation. Proceed to the next section of this manual "Operation and Maintenance".

OPERATION AND MAINTENANCE

POWDER PRO CONTROLS

VOLUME ADJUSTMENT KNOB

Adjusts the amount of powder being sprayed with "0" the minimum and "10" the maximum.

ON/OFF SWITCH

When switched to the "ON" position, the system is armed and will spray only when the press goes on impression. The center position is off.

INDICATOR LIGHT

This light is illuminated only when the unit is actually spraying. The light will go on and off as sheets pass under the spray nozzles.

TEST SWITCH

Use this switch for setting powder volume when not printing. With the factory pump switch set to the "ON" position, push the test switch to visually see the amount of powder being sprayed, adjust if necessary.

PUMP ADJUSTMENT

Before the PowderPro® spray system can be used, the pump pressure must be calibrated to allow for maximum adjustment to cover a wide range of jobs. The powder volume adjustment range is controlled by the outlet pressure of the pump. Locate the adjustment knob on the pump near the outlet hose. Loosen the locking knob and turn the adjustment knob clockwise to increase the pressure for more powder. Turn the knob counterclockwise to decrease pressure for less powder. Set the correct pump pressure as follows:

1. Turn the pump on by switching the factory pump switch to the "ON" position.
2. Set the volume adjustment knob to "10" (MAX).
3. Hold the TEST switch ON while looking at the spray nozzles in the delivery.
4. Have someone slowly adjust the pressure on the pump until the powder is barely visible. A powder setting of "10" with visible powder in the delivery is more than

OPERATION AND MAINTENANCE

enough powder. Consequently, a setting of "5" results in no visible powder but sufficient powder for most jobs.

5. Tighten the locking knob on the pump adjustment.

INITIAL SETTINGS

The initial setting for the powder volume adjustment knob on an average job is "5." If more powder is needed than is available at a setting of "10" you will need to adjust the pump. If less powder is needed than is available at a setting of "0" you also have to adjust the pump. In order to have a wide range of powder volume adjustment available for different jobs, the "normal" setting for average jobs should be somewhere in the range from "4" to "6." Otherwise you will need to adjust the pump.

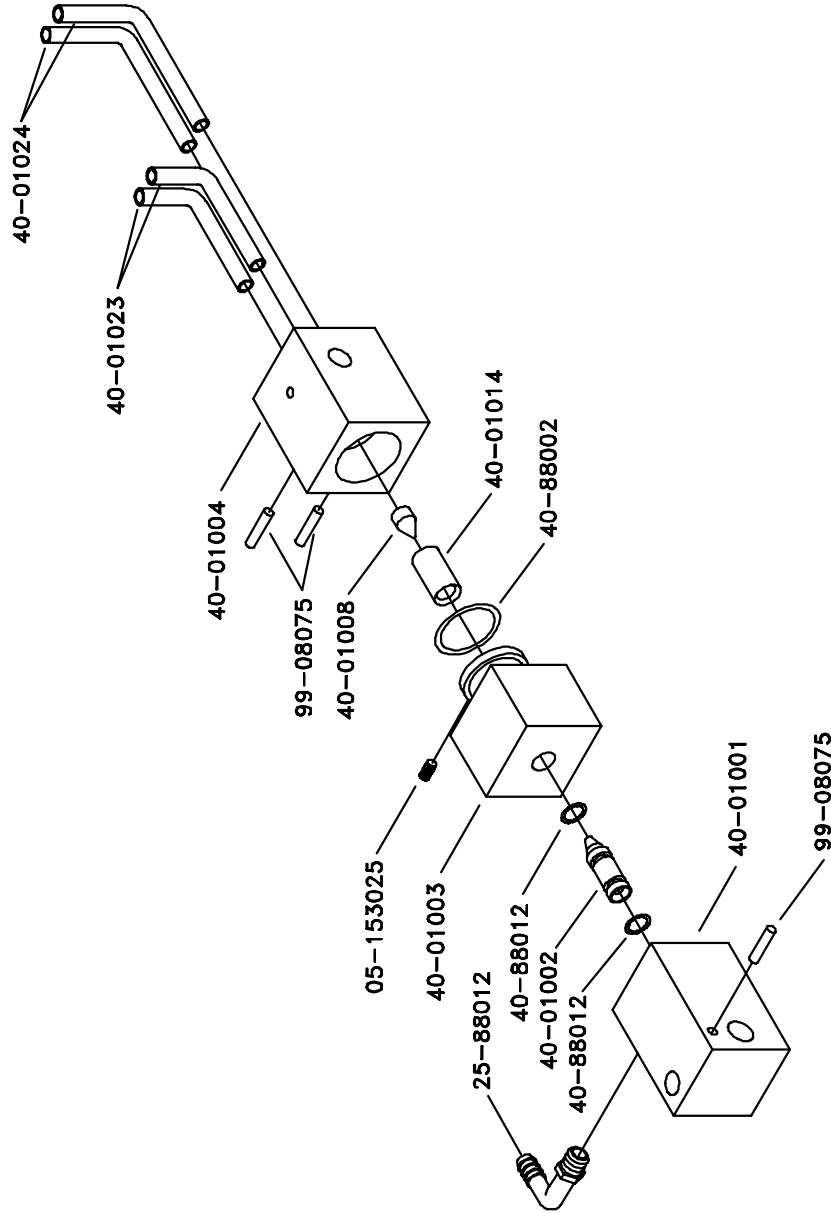
OPERATION

1. Fill the powder hopper with an intermediate grain (20-25) powder (available from Accel) up to the "MAX" line on the hopper.
2. Place the ON/OFF switch to the "ON" position.
3. Consider the sheet width and if necessary change the spray nozzle selector knob. When switching from a four nozzle to a two nozzle setting, you must readjust the powder volume.
4. The spray length is automatically controlled by the press.
5. Adjust the powder volume adjustment knob if necessary.
6. The powder sprayer will operate automatically when the press goes on impression and a sheet is present.

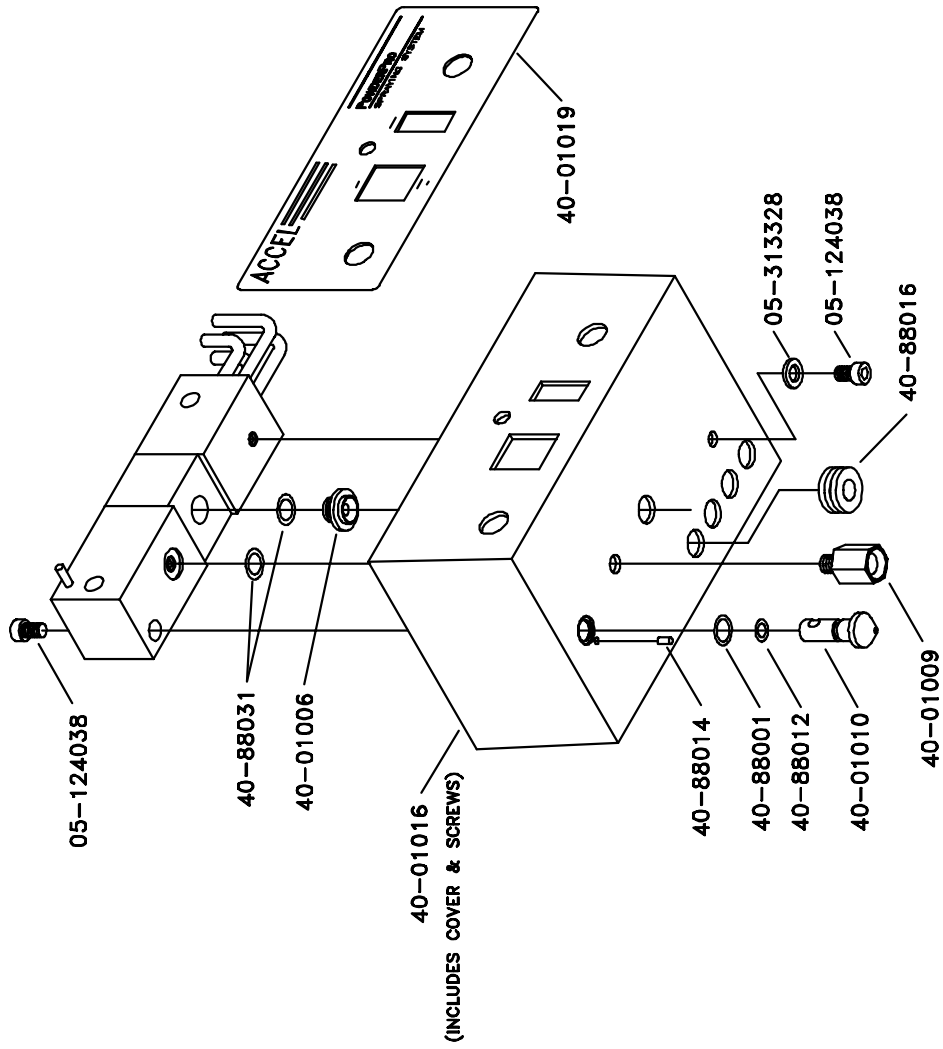
OPERATION AND MAINTENANCE

MAINTENANCE

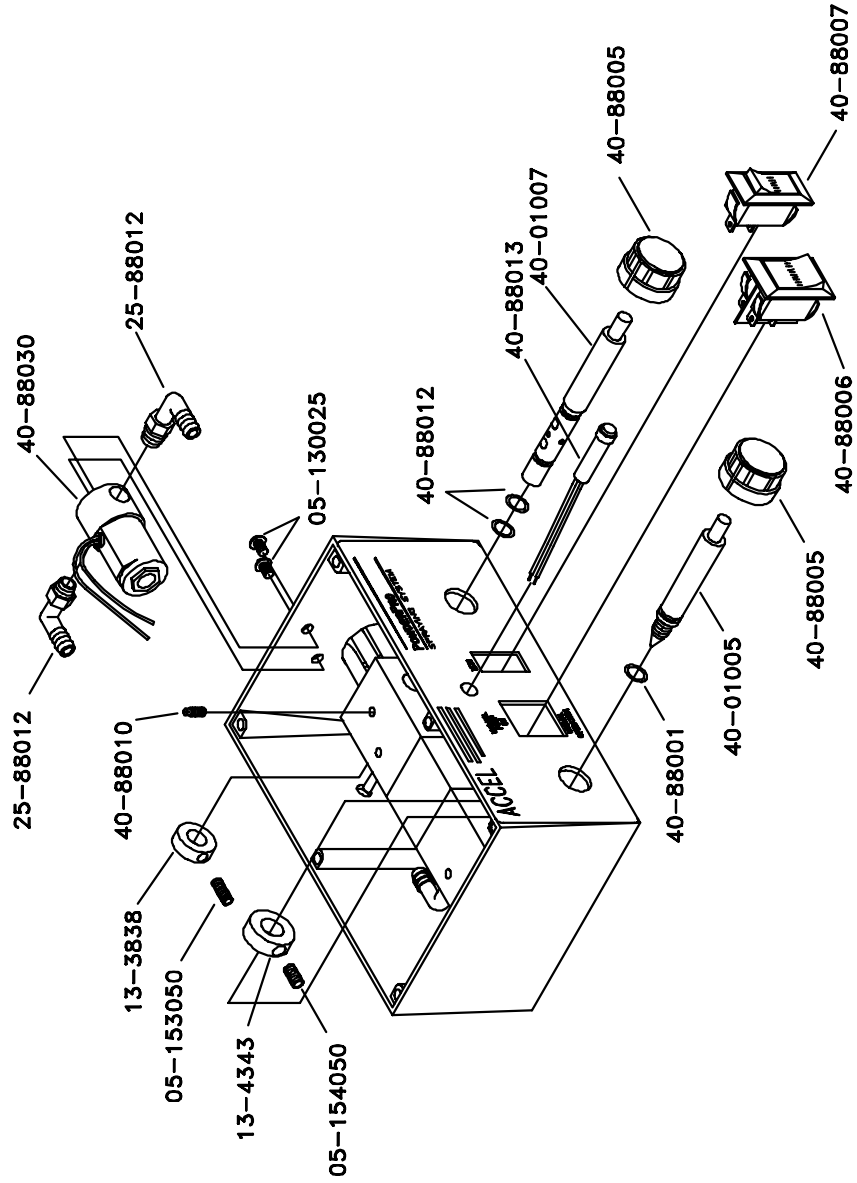
1. Clean the filter on the pump once a week, blowing it clean with compressed air.
2. Remove any powder that may have accumulated on the bottom of the spray nozzles daily.
3. Never use solvents containing oil when cleaning any part of the sprayer.
4. Use compressed air only if your compressor is equipped with a proper in-line dryer. Otherwise, use canned air. Moisture in the sprayer will affect its performance.



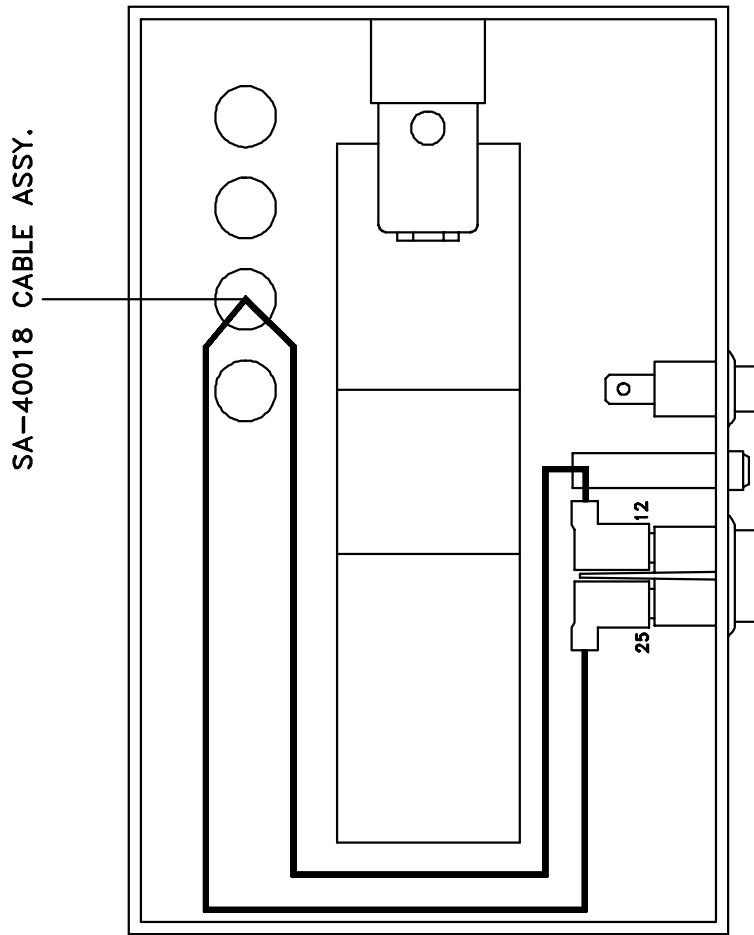
272LPP01, 8-6-97



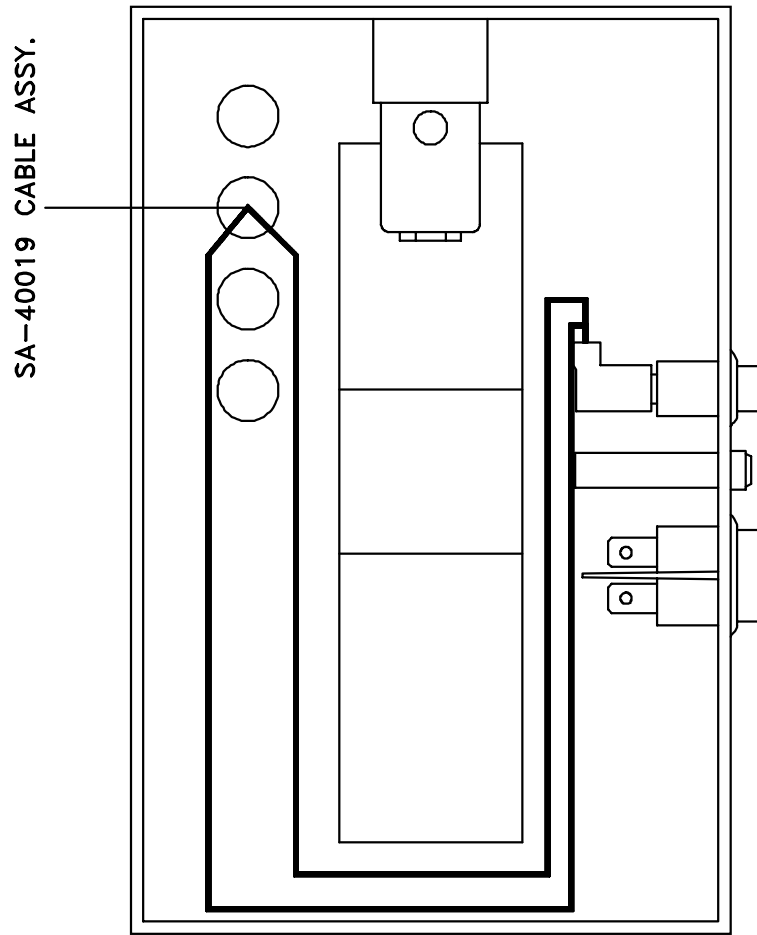
272LPP02, 8-6-97



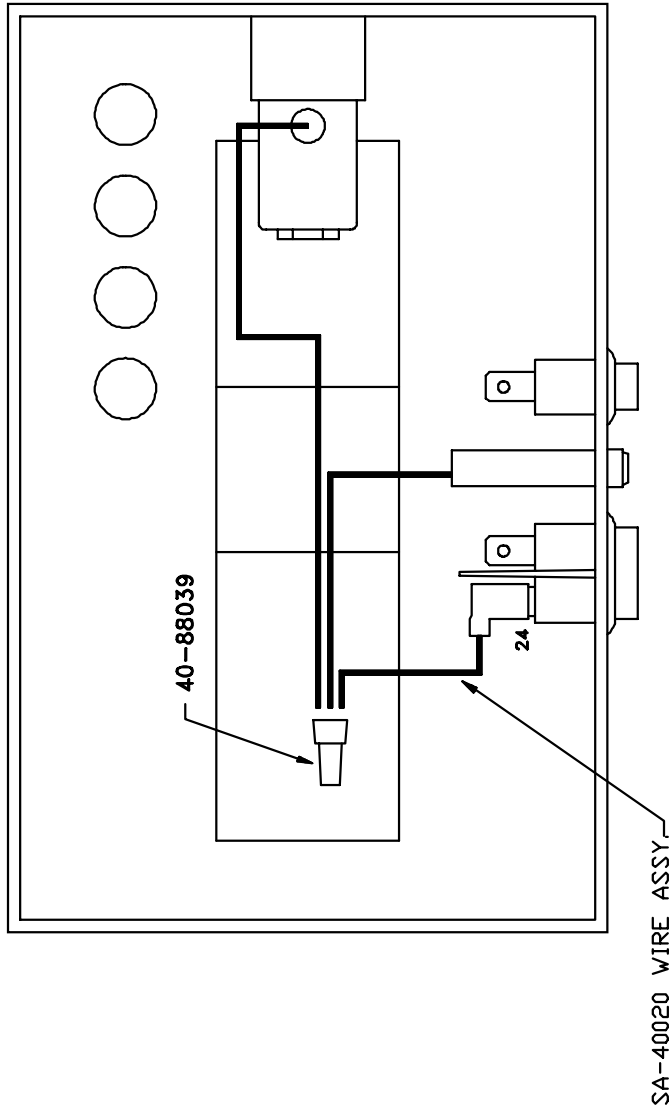
272LPP03, 8-6-97



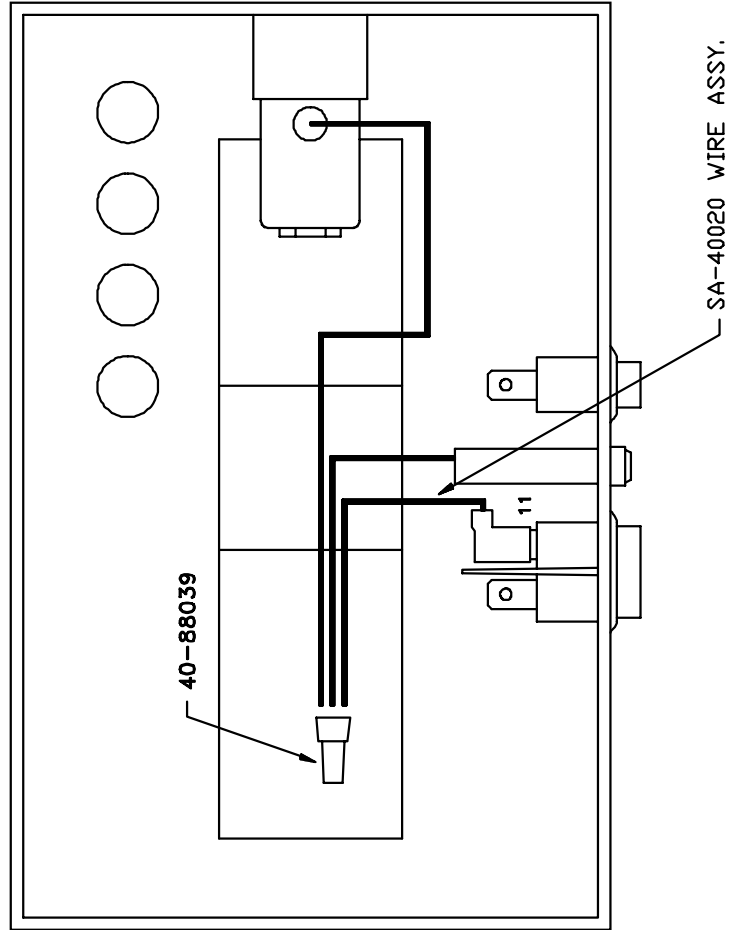
272LFF04, 8-6-97



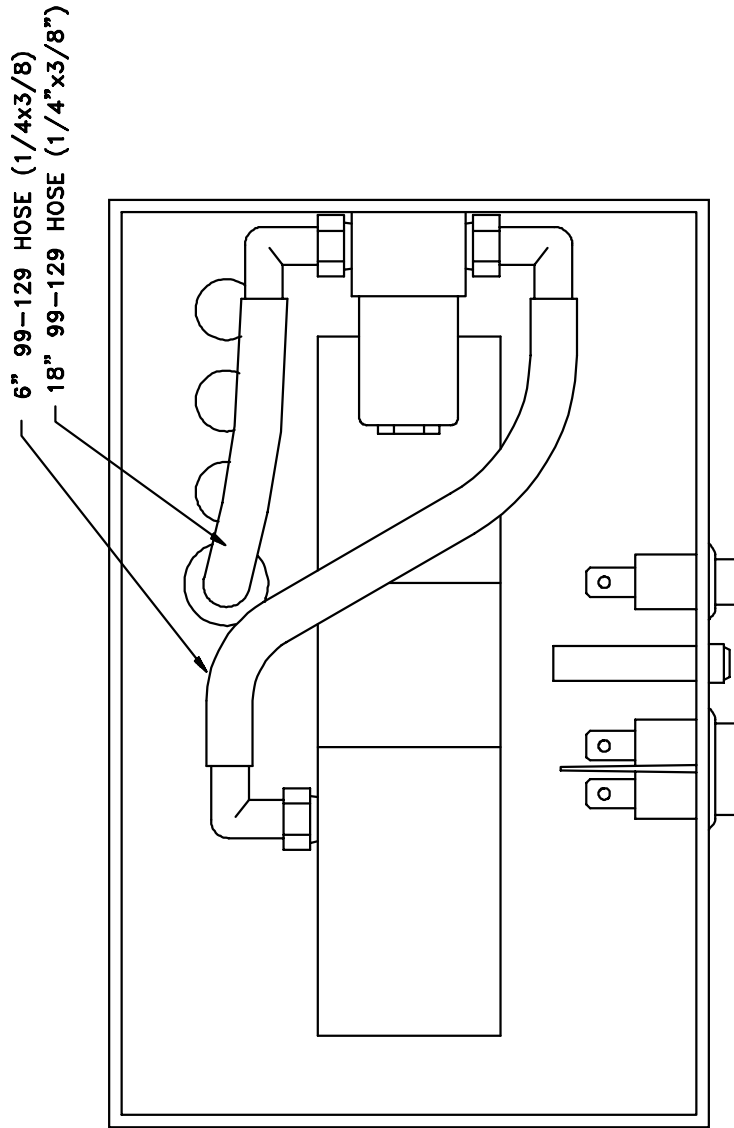
272LPP05, 8-6-97



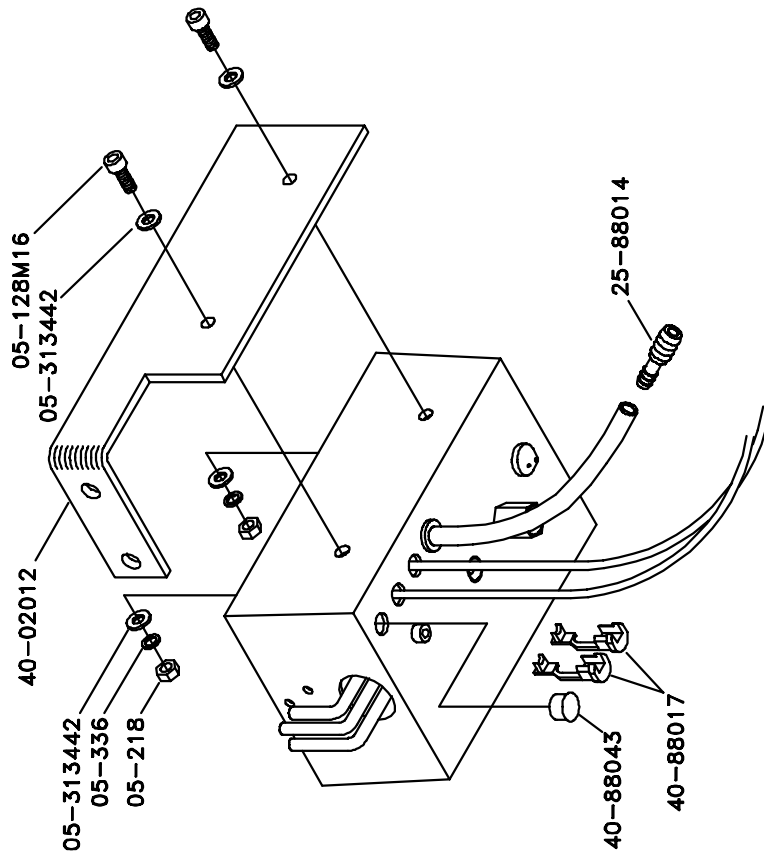
272LPP06, 8-6-97



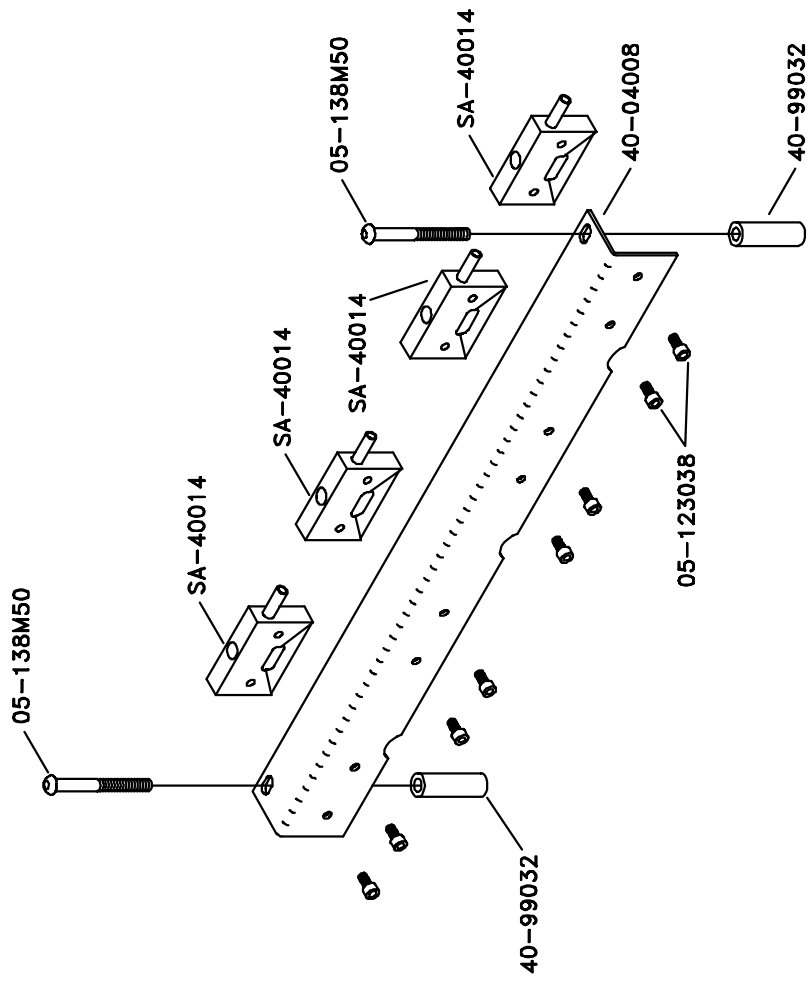
272LPP07, 8-5-97



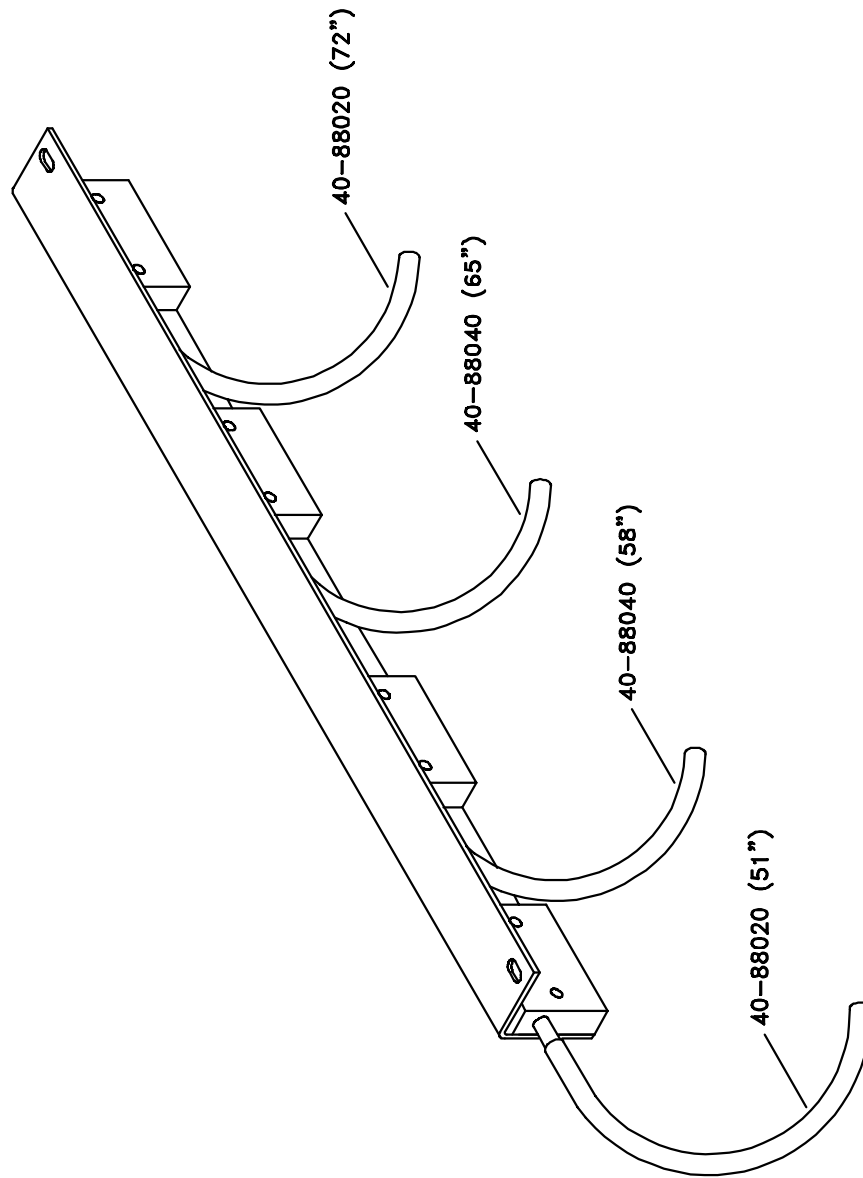
272LP08, 8-6-97



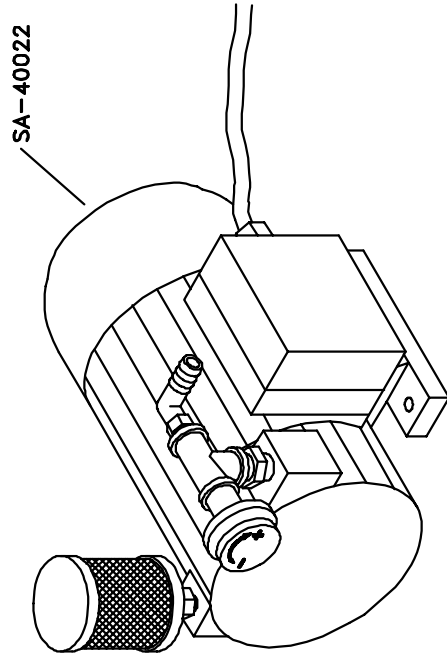
272LPP09, 8-6-97



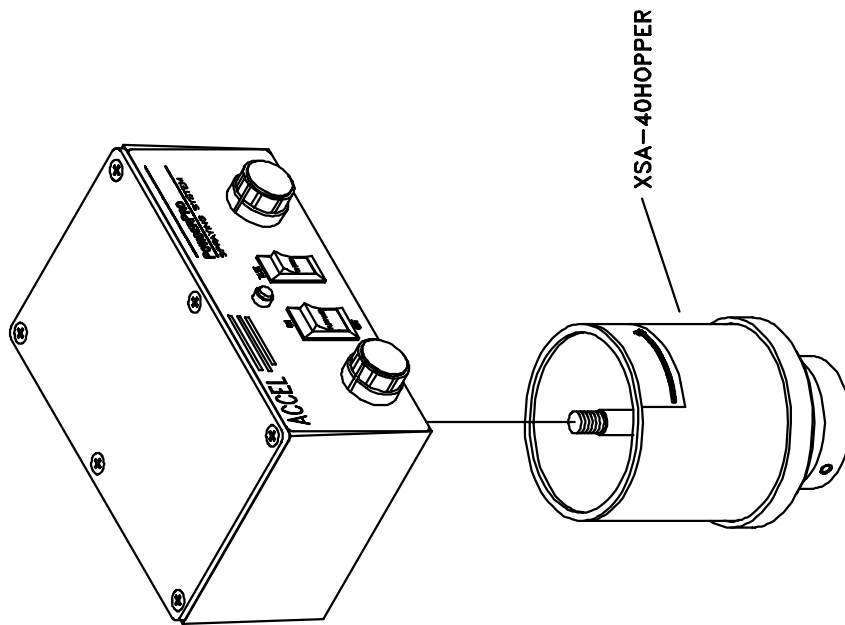
272LPP10, 8-7-97



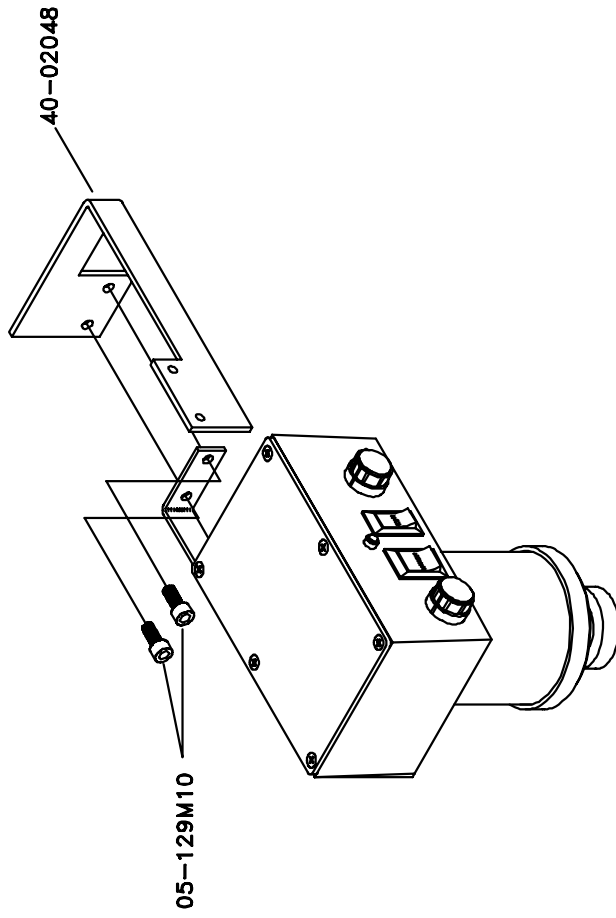
272LPP11, 8-7-97



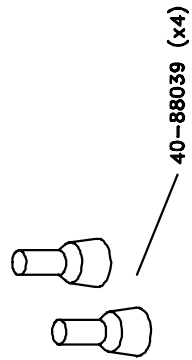
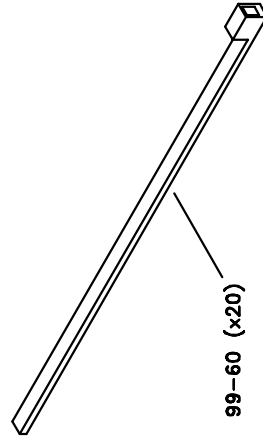
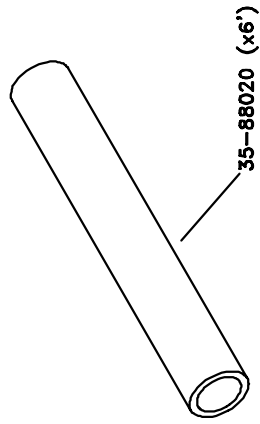
272LPP12, 8-7-97



272LPP13, 8-8-97



272LPP14, 8-7-97



272JPP15, 8-8-97

ACCEL  [®]
Graphic Systems

11103 Indian Trail, Dallas, TX 75229 Phone 972-484-6808, Fax 800-365-6510
E-Mail accel@dallas.net, Web Site www.accelgraphicsystems.com