

# PowderPro<sup>®</sup> Spray System

## Installation Instructions

Sakurai 258

**ACCEL**  <sup>®</sup>  
*Graphic Systems*



# GENERAL INFORMATION

**ATTENTION  
POWDERPRO  
OWNER!**

Accel Graphic Systems provides parts and service through its authorized distributors and dealers. Therefore, all requests for parts and service should be directed to your local dealer.

The philosophy of Accel Graphic Systems is to continually improve all of its products. Written notices of changes and improvements are sent to Accel Graphic Systems' Dealers.

If the operating characteristics or the appearance of your product differs from those described in this manual, please contact your local Accel Graphic Systems Dealer for updated information and assistance.

Always update your equipment when improvements are made available, especially those related to safety.

**YOUR AUTHORIZED POWDERPRO DEALER IS:**

---

---

---

---

**THE SERIAL NUMBER OF YOUR  
POWDERPRO IS:**

---

---

For technical assistance, please call or contact

**ACCEL GRAPHIC SYSTEMS**  
11103 Indian Trail  
Dallas, TX 75229  
(972) 484-6808  
TOLL FREE FAX 1 (800) 365-6510

**PowderPro® is covered by U.S. Patents Pending**



# INSTALLATION

**1**

Disconnect the electrical power to the press.

---

**2**

Remove the OPS delivery side cover.

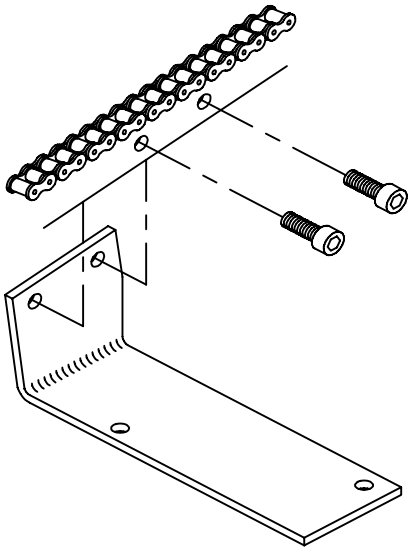
---

**3**

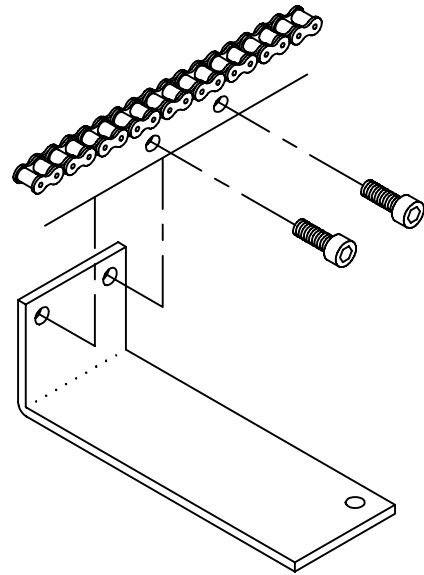
Remove the original powder spray hopper/solenoid assembly from the press. To remove this assembly you will have to cut the two wires going to the switch (58EII/258EII machines only), disconnect the hose coming from the pump, disconnect the hose going to the blow down adjustment valve and disconnect the hose going to the powder spray bar. Reconnect the hose coming from the pump directly to the blow down adjustment valve.

**5**

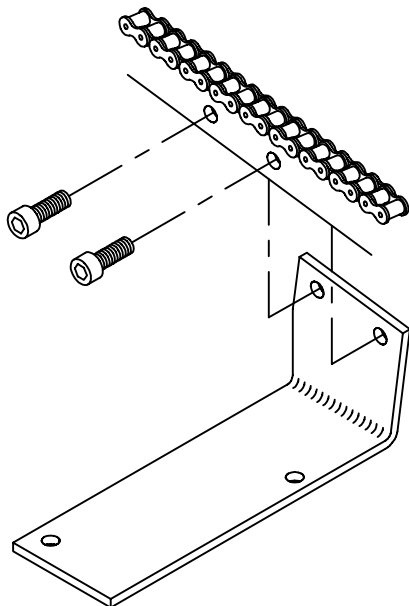
A



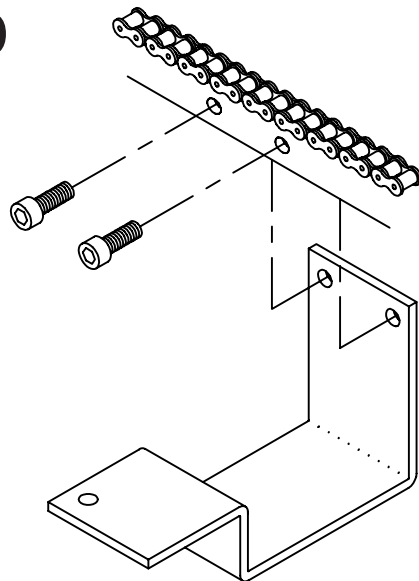
B



C



D



## INSTALLATION

**4**

Disconnect the static eliminator from the powder spray bar in the delivery (58EII/258EII only). Save two of the bolts for a later step. Remove the spray bar, spray bar mounting brackets and hose from the press. Save the four bolts which attached the spray bar mounting brackets to the chain guides.

---

**5**

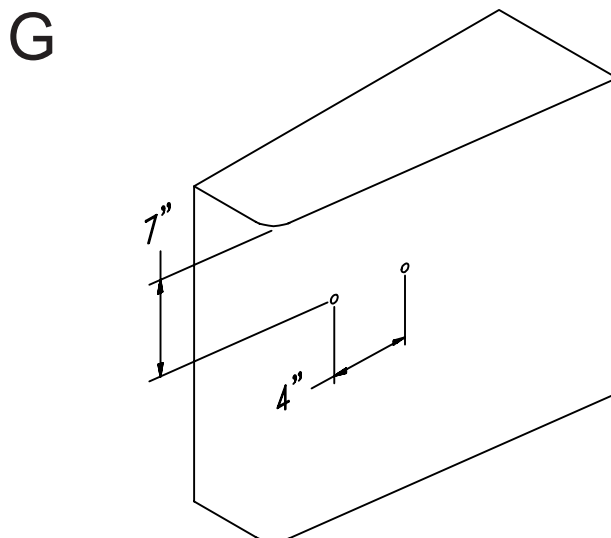
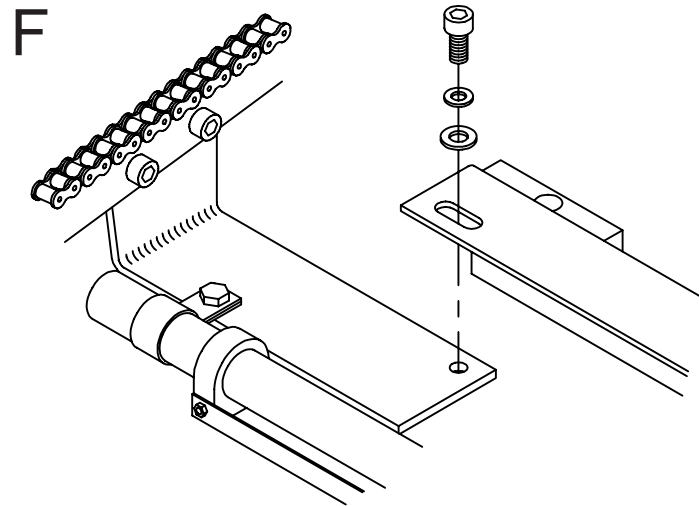
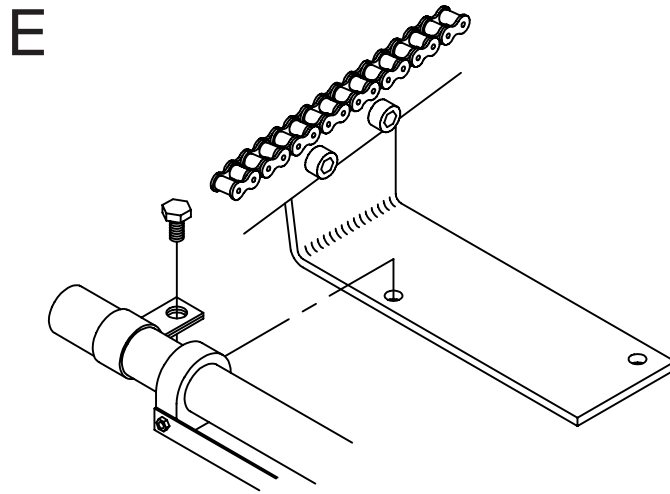
Using the bolts saved from the previous step attach the NOPS PowderPro® spray bar mounting bracket to the same holes in the chain guides that the original spray bar mounting brackets were attached as shown in diagram A. The mounting bracket shown in diagram A is for the 58EII/258EII presses. If your press is an older style machine see Diagram B.

---

**6**

Repeat step 5 for the OPS mounting bracket as shown in diagram C for new style machines and diagram D for old style.

**7**



## INSTALLATION

7

### THIS STEP FOR NEW STYLE MACHINES (58EII/258EII) ONLY.

Using the original bolts saved in step 4 attach the static eliminator to the mounting brackets as shown in diagram E. Make sure you attach the ground wire on the NOPS.

---

8

Using the provided hardware attach the spray bar assembly to the mounting brackets as shown in diagram F. The tubes will follow the same route as did the original hose; between the chain rails, down the frame, and through the hole in the frame along with the other hoses. Once through the hole route the tubes out from the press near where the original hopper was mounted. Be extra careful not to kink the tubes when routing them through the press. Use the provided tie-wraps to secure the tubes away from any moving parts.

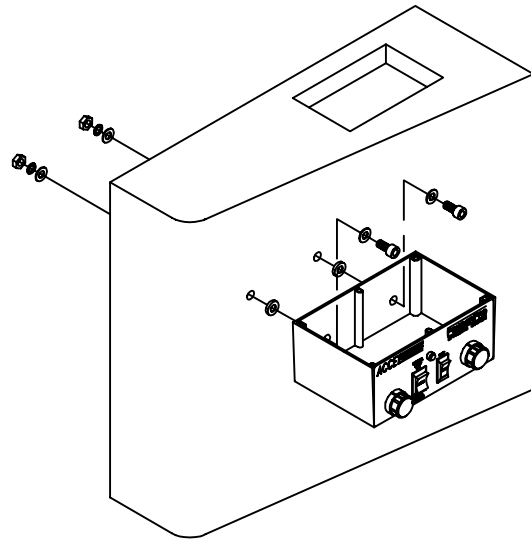
---

9

Using diagram G as a guide drill two 9/32" dia. holes in the OPS delivery side cover. These holes will be for mounting the PowderPro® control box.

9

H



## INSTALLATION

10

Remove the lid from the PowderPro® control box. Using the provided hardware attach the box to the cover as shown in diagram H. Use the provided thick washers between the control box and cover to space the control box away from the cover to prevent the hopper from hitting the side cover. Replace the lid on the box.

---

11

Replace the cover, with the control box attached, on the press.

**NOTE: The next four steps are for the electrical connections for the PowderPro®. If you are unfamiliar with or unsure about any of these connections either refer to the electrical schematics provided with the press or consult with someone that is familiar with the electrical workings of the press.**

---

12

Using the provided closed end crimp connectors connect the wires in the shorter of the two cables coming out of the PowderPro® control box to the wires that went to the original solenoid.



## INSTALLATION

13

Route the longer of the two cables coming out of the PowderPro® control box into the press electrical cabinet. Refer to the press electrical diagrams to identify and locate the relay that switches the current to the powder spray solenoid. Once the relay is located use the electrical diagram to determine which connections on the relay are for the spray solenoid. Connect the wires in the cable from the PowderPro® control box to these positions. This connection will enable the test switch to fire the solenoid by bypassing the relay when the press is not on impression. **DO NOT REMOVE ANY OF THE EXISTING WIRES FROM THE RELAY.**

---

14

Place the provided pump in a suitable location on the floor near the press. Route the pump cable into the electrical cabinet. Use the electrical diagrams to determine which relay/circuit breaker combination is the “air pump motor for delivery.” Attach the pump wires to the circuit breaker, matching the colors of the PowderPro® pump wires to the colors of the existing wires connected to the breaker except for the black pump wire which goes to the position on the breaker with the blue labeled wire in it. **DO NOT REMOVE THE EXISTING WIRES FROM THE CIRCUIT BREAKER.** Attach the green pump wire to one of the ground positions (“E”) on the terminal strip. Turn the amp adjustment dial on the circuit breaker up until 1 1/2 amps is added to the original setting. Insert any loose wire into the wire ducts for a clean installation.

---

15

Briefly restore the power to the press, turn the pumps on and verify that the PowderPro® pump is turning in the right direction (pressure not vacuum). The new Powder Pro pump will come on whenever the press pumps are on. If the pump is turning in the wrong direction turn the power to the press off and switch the black and white pump wires on the circuit breaker.



## INSTALLATION

**16**

Route the provided hose from the barbed fitting on the pump to the barbed reducer fitting on the hose coming out of the PowderPro® control box.

---

**17**

Connect the plastic tubes coming from the spray bar to the stainless steel tubes coming out of the side of the PowderPro® control box. Connect the tubes with the black tape on the ends to the bottom two tubes coming out of the PowderPro® control box. The tubes are shipped a little longer than necessary so you need to cut them.

---

**18**

Use the provided tie wraps to secure the tubes, hose and cables together in a manner where they will not be in the way of the operator or any moving parts in the press.

**15**

## OPERATION AND MAINTENANCE

### POWDER PRO CONTROLS

#### VOLUME ADJUSTMENT KNOB

Adjusts the amount of powder being sprayed with "0" the minimum and "10" the maximum.

#### ON/OFF SWITCH

When switched to the "ON" position, the system is armed and will spray only when the press goes on impression. The center position is off.

#### INDICATOR LIGHT

This light is illuminated only when the unit is actually spraying. The light will go on and off as sheets pass under the spray nozzles.

#### TEST SWITCH

Use this switch for setting powder volume when not printing. With the factory pump switch set to the "ON" position, push the test switch to visually see the amount of powder being sprayed, adjust if necessary.

### PUMP ADJUSTMENT

Before the PowderPro® spray system can be used, the pump pressure must be calibrated to allow for maximum adjustment to cover a wide range of jobs. The powder volume adjustment range is controlled by the outlet pressure of the pump. Locate the adjustment knob on the pump near the outlet hose. Loosen the locking knob and turn the adjustment knob clockwise to increase the pressure for more powder. Turn the knob counterclockwise to decrease pressure for less powder. Set the correct pump pressure as follows:

1. Turn the pump on by switching the factory pump switch to the "ON" position.
2. Set the volume adjustment knob to "10" (MAX).
3. Hold the TEST switch ON while looking at the spray nozzles in the delivery.
4. Have someone slowly adjust the pressure on the pump until the powder is barely visible. A powder setting of "10" with visible powder in the delivery is more than

## OPERATION AND MAINTENANCE

enough powder. Consequently, a setting of "5" results in no visible powder but sufficient powder for most jobs.

5. Tighten the locking knob on the pump adjustment.

### INITIAL SETTINGS

The initial setting for the powder volume adjustment knob on an average job is "5." If more powder is needed than is available at a setting of "10" you will need to adjust the pump. If less powder is needed than is available at a setting of "0" you also have to adjust the pump. In order to have a wide range of powder volume adjustment available for different jobs, the "normal" setting for average jobs should be somewhere in the range from "4" to "6." Otherwise you will need to adjust the pump.

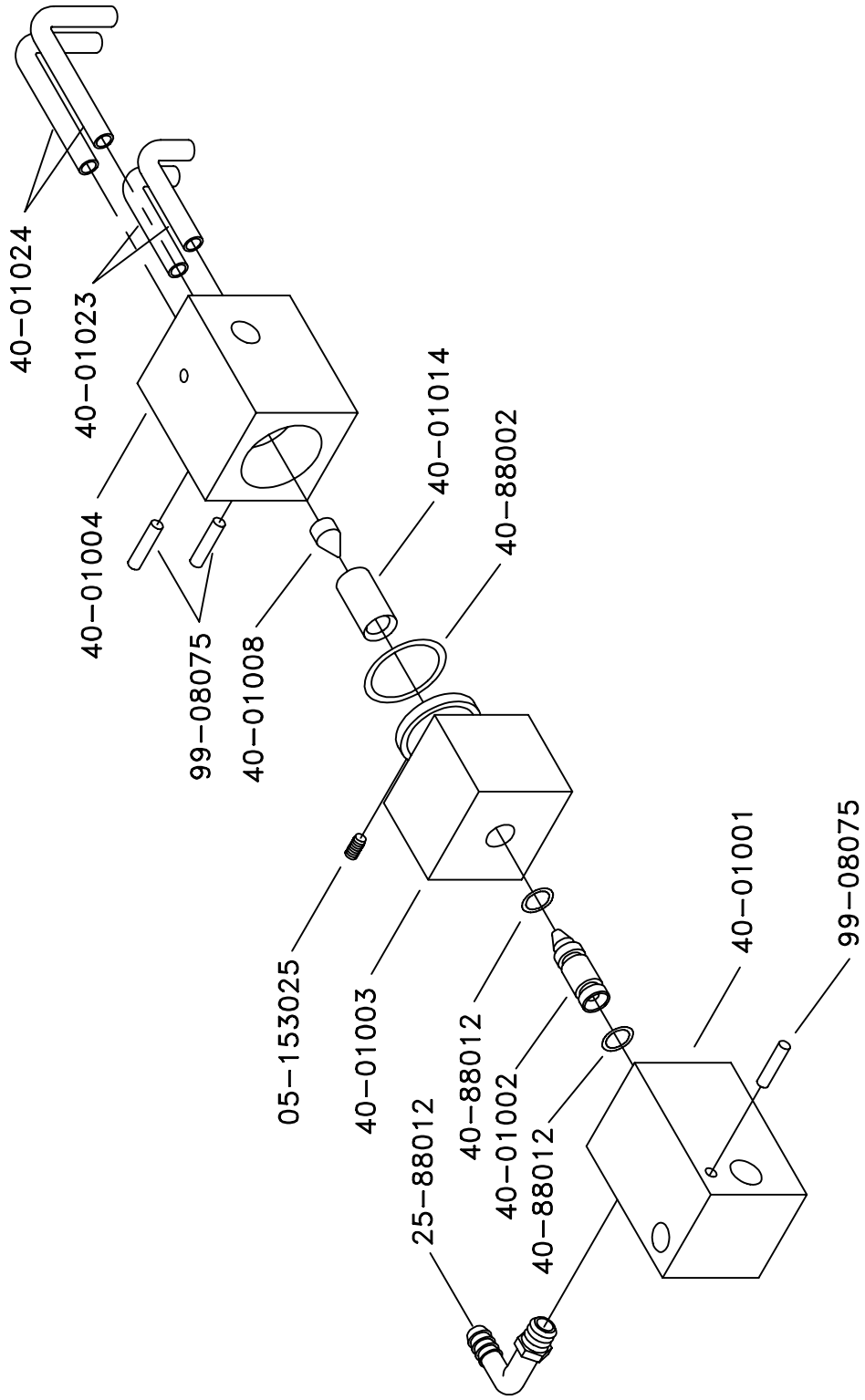
### OPERATION

1. Fill the powder hopper with an intermediate grain (20-25) powder (available from Accel) up to the "MAX" line on the hopper.
2. Place the ON/OFF switch to the "ON" position.
3. Consider the sheet width and if necessary change the spray nozzle selector knob. When switching from a four nozzle to a two nozzle setting, you must readjust the powder volume.
4. The spray length is automatically controlled by the press.
5. Adjust the powder volume adjustment knob if necessary.
6. The powder sprayer will operate automatically when the press goes on impression and a sheet is present.

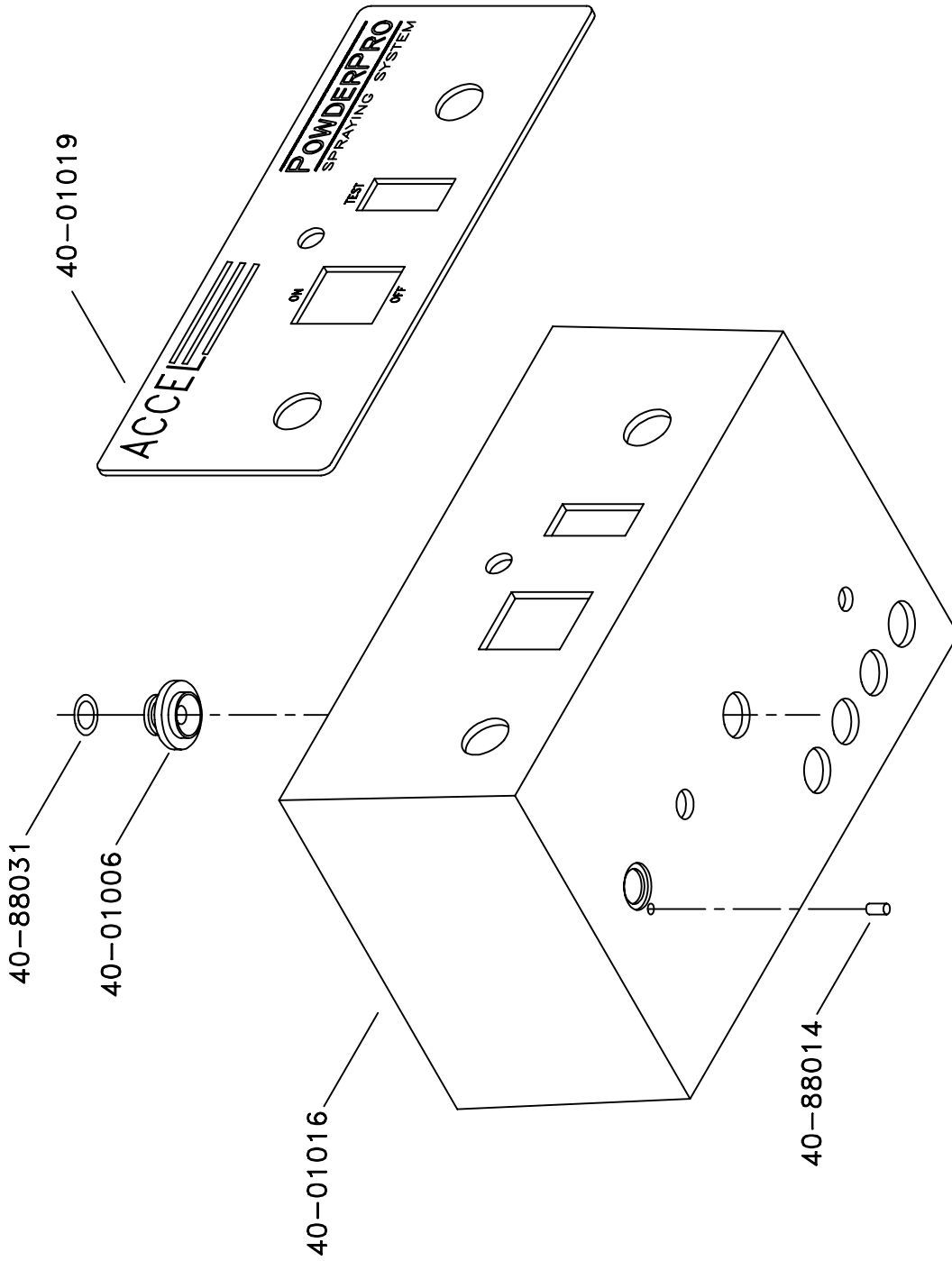
## **OPERATION AND MAINTENANCE**

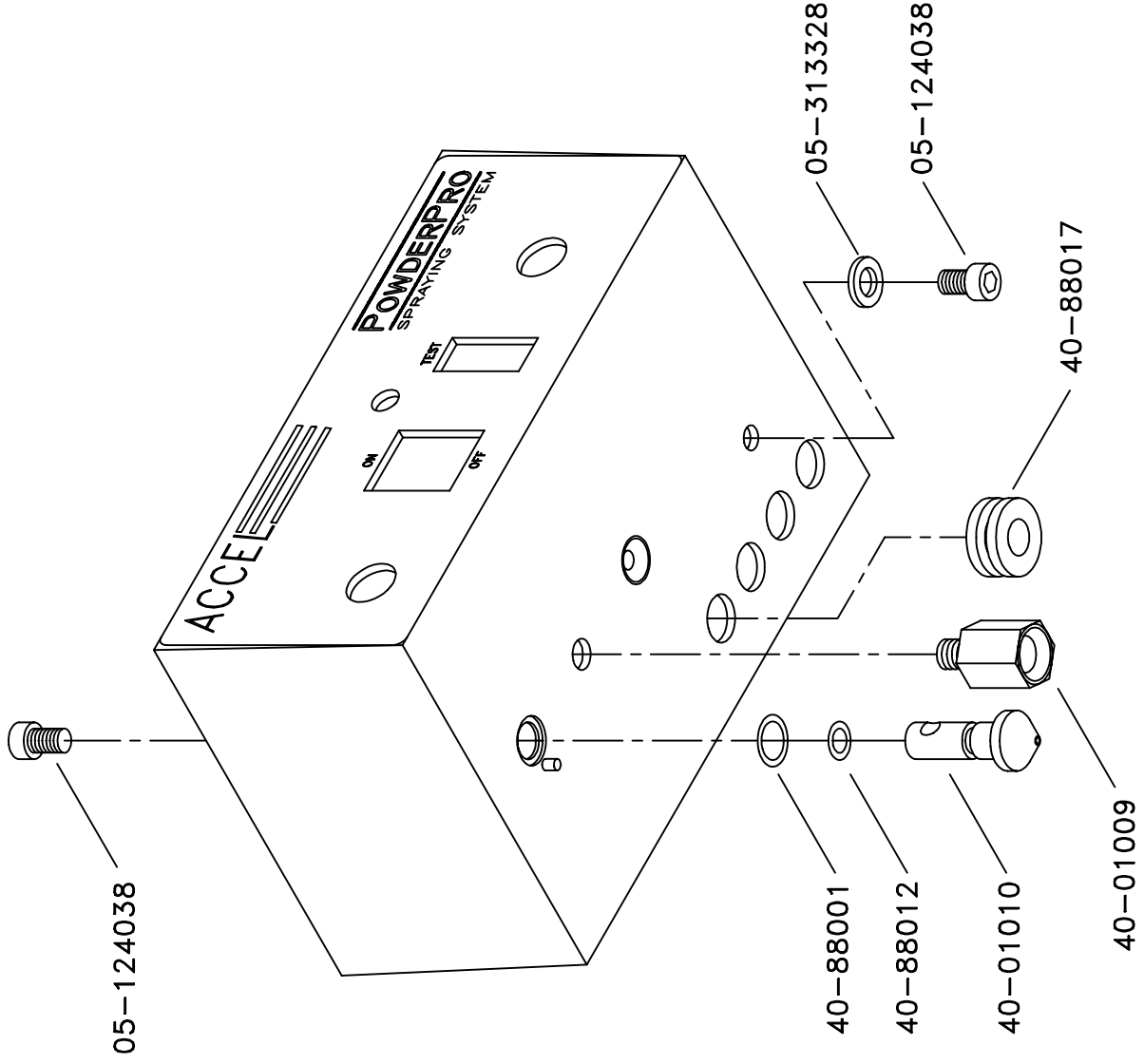
### **MAINTENANCE**

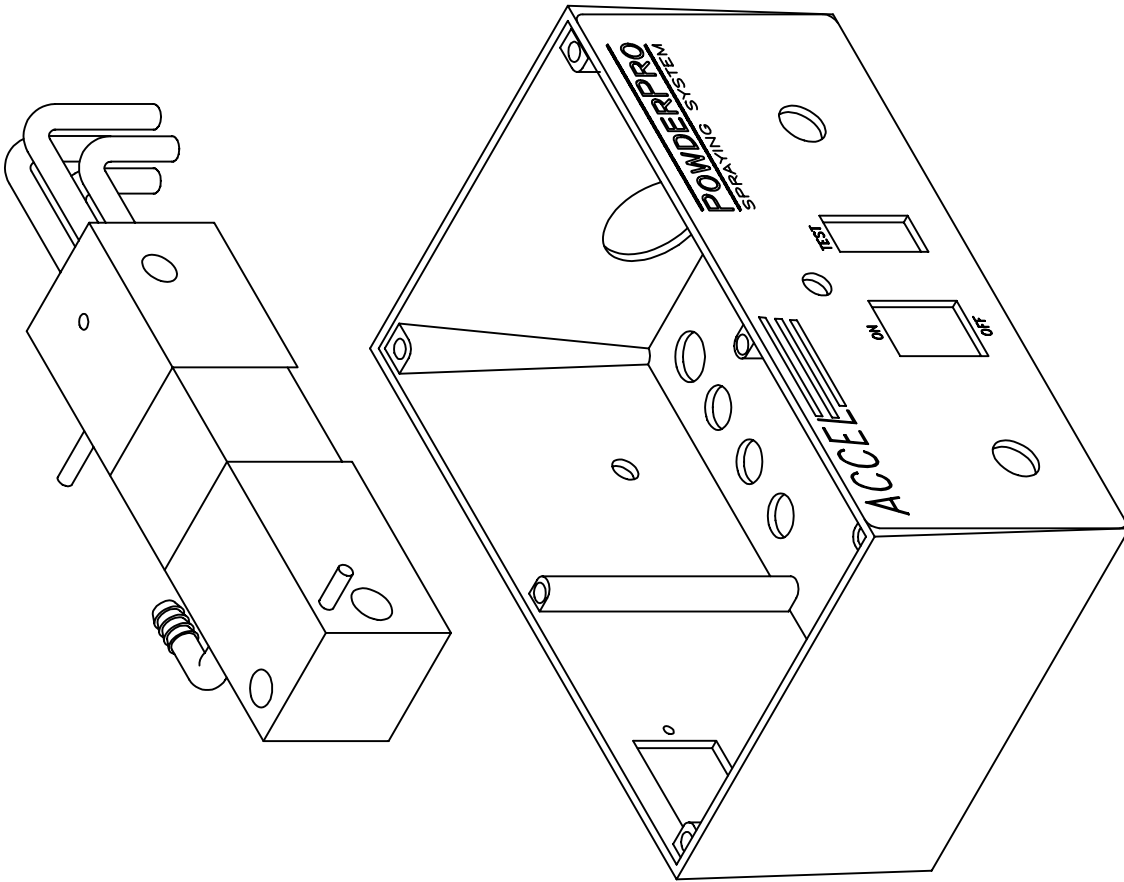
1. Clean the filter on the pump once a week, blowing it clean with compressed air.
2. Remove any powder that may have accumulated on the bottom of the spray nozzles daily.
3. Never use solvents containing oil when cleaning any part of the sprayer.
4. Use compressed air only if your compressor is equipped with a proper in-line dryer. Otherwise, use canned air. Moisture in the sprayer will affect its performance.

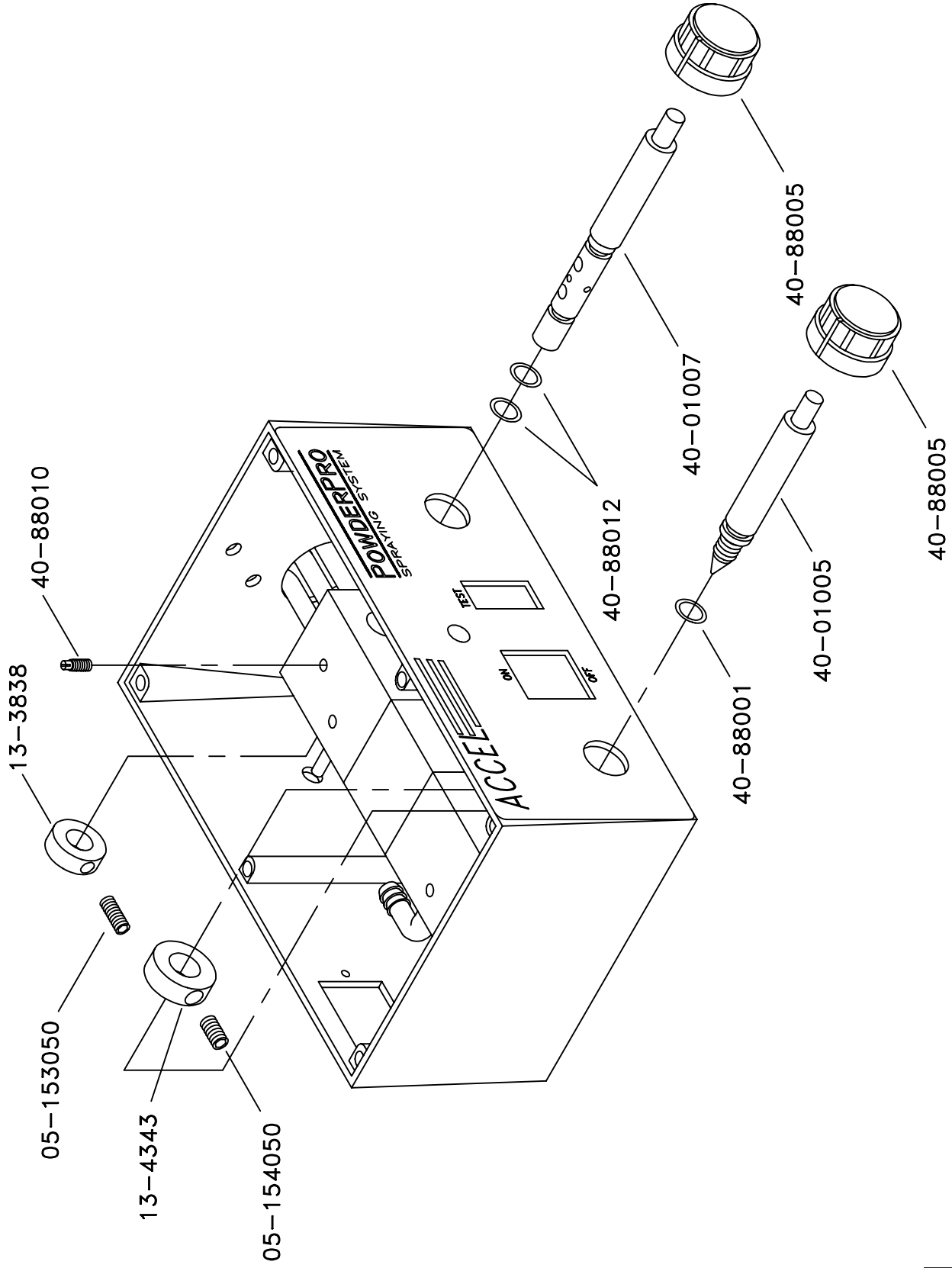


258P25, 5-6-96

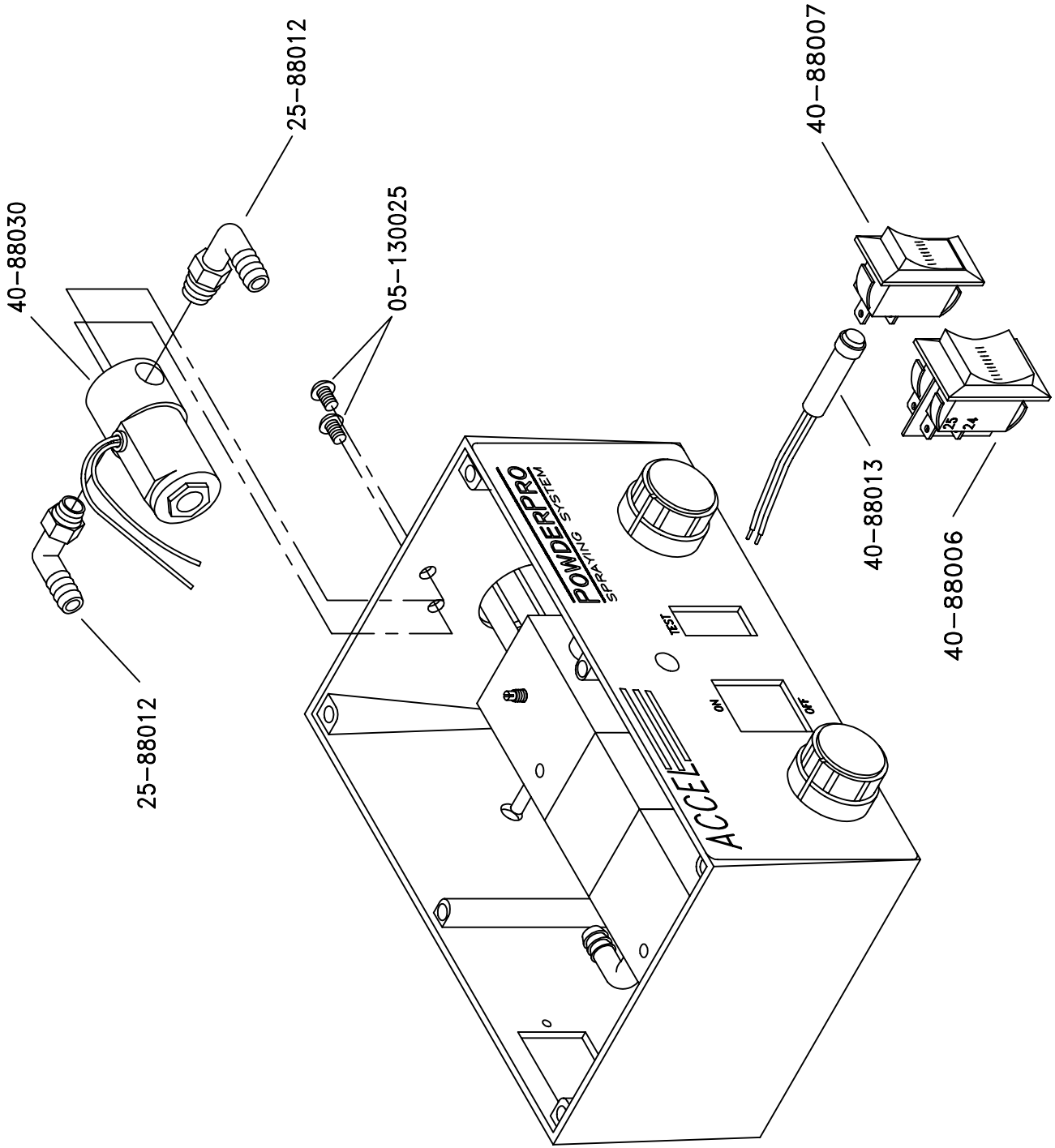


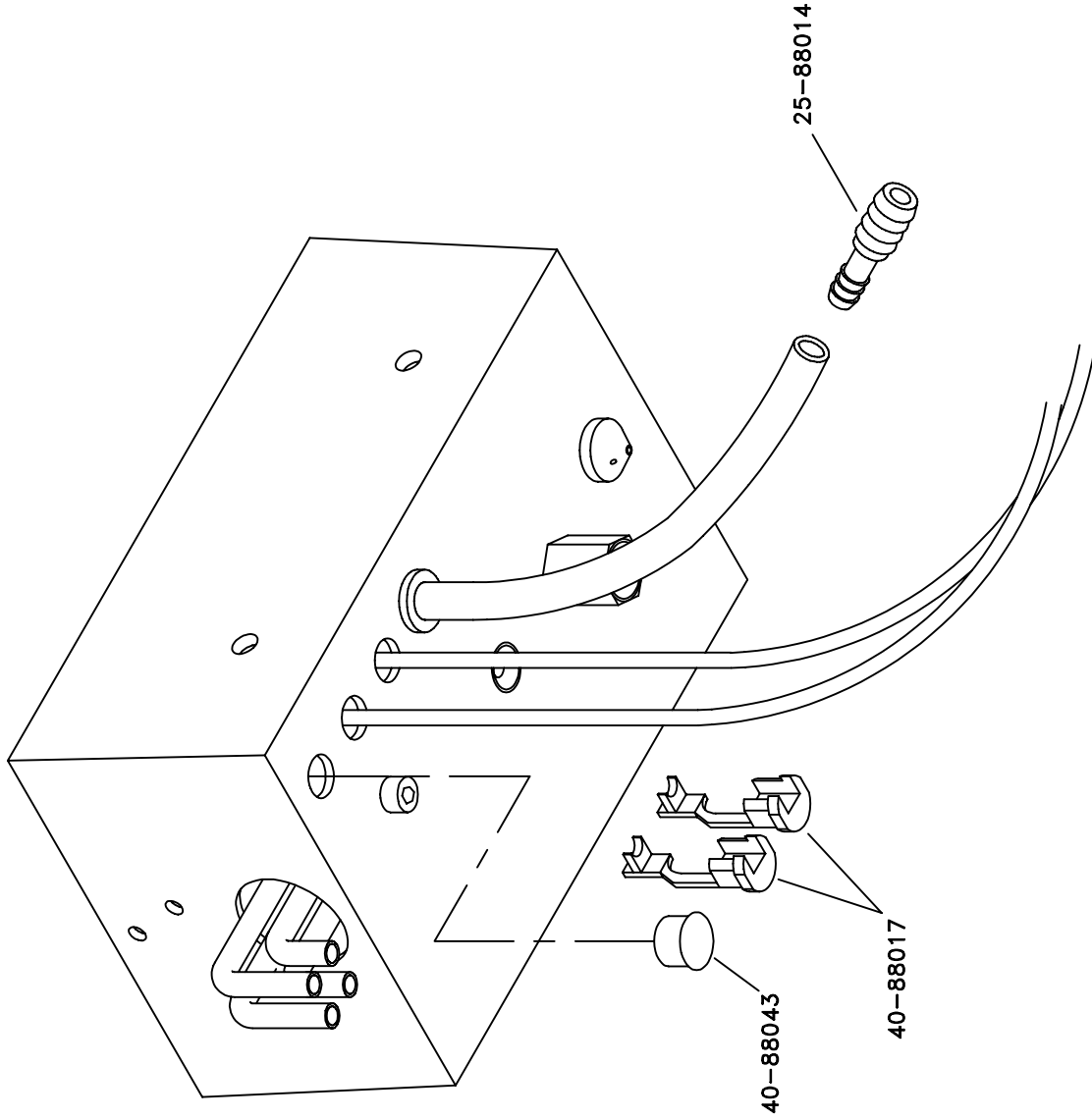


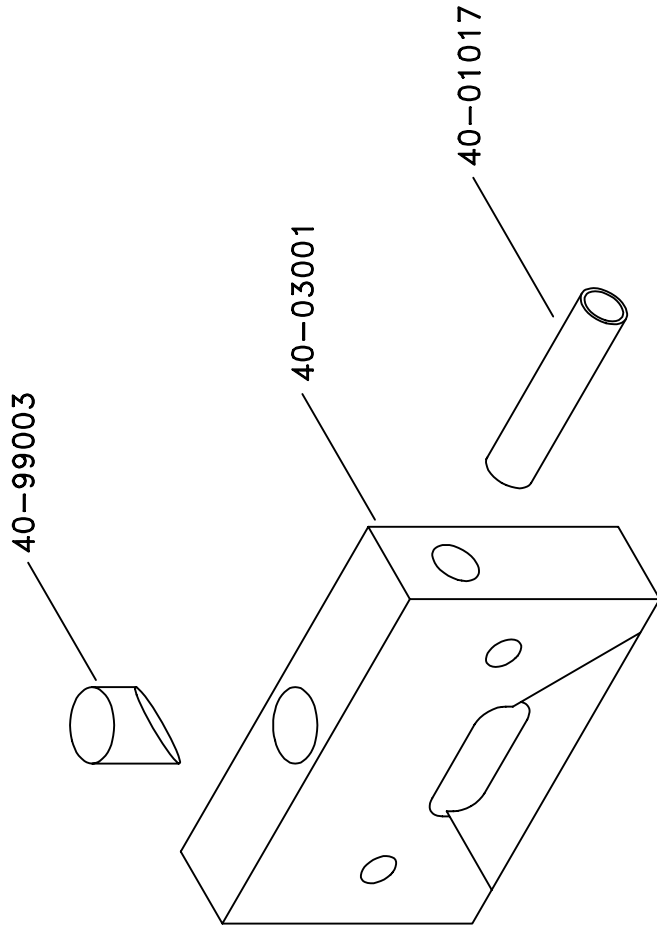




258P29, 5-6-96



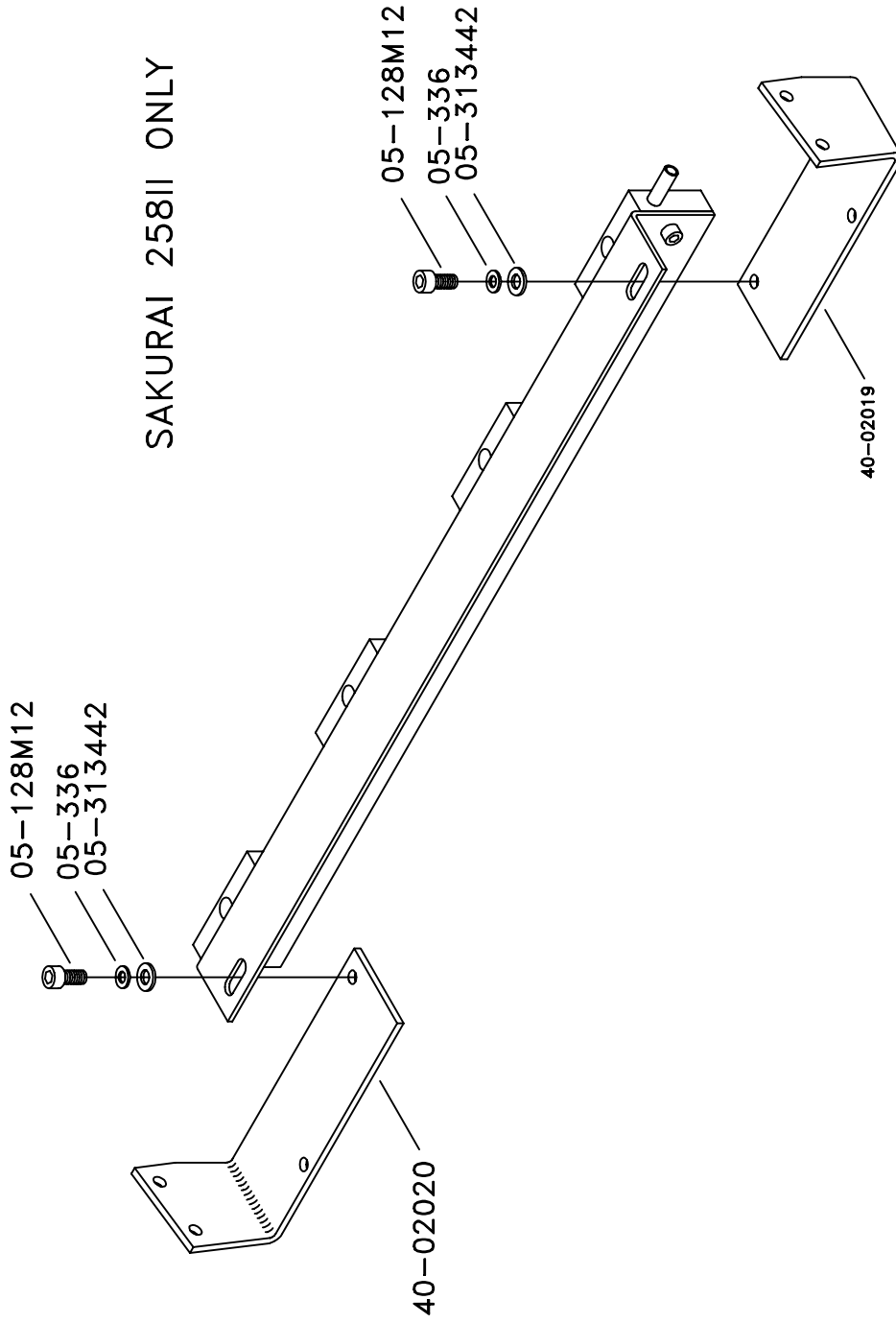




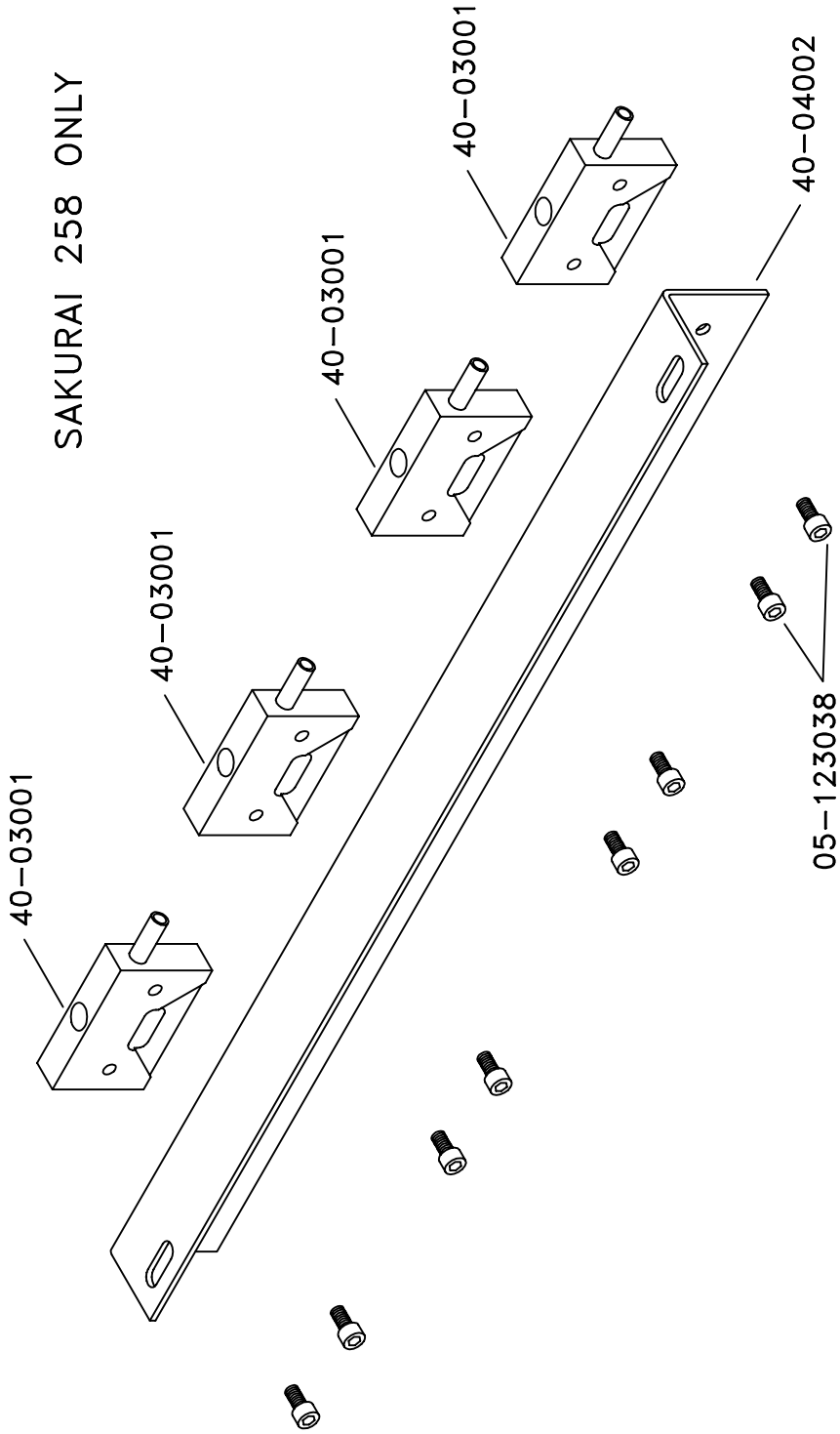
258P07, 5-6-96



SAKURAI 258II ONLY



258P09, 5-6-96



258P34, 5-6-96

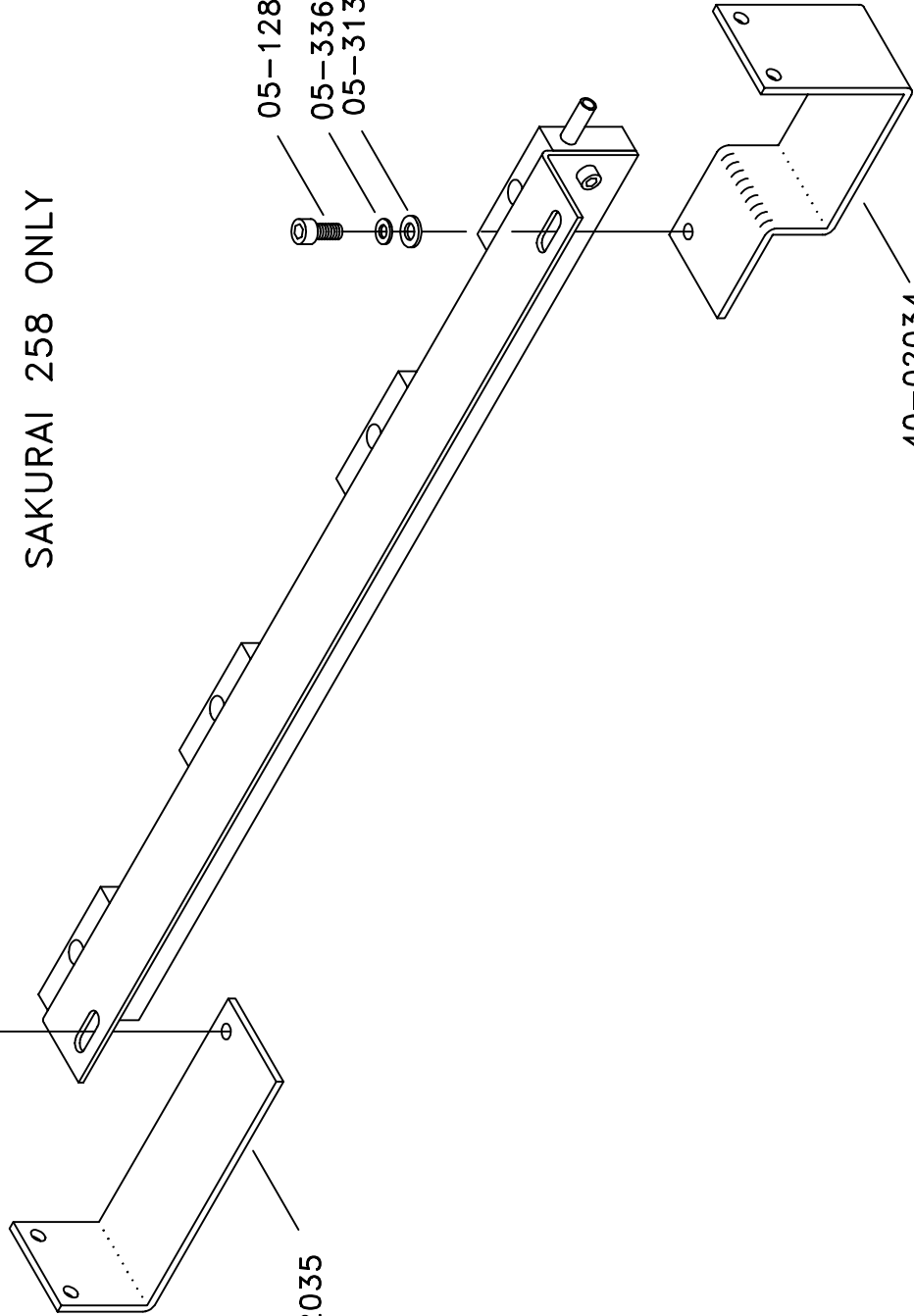
05-128M12  
05-336  
05-313442

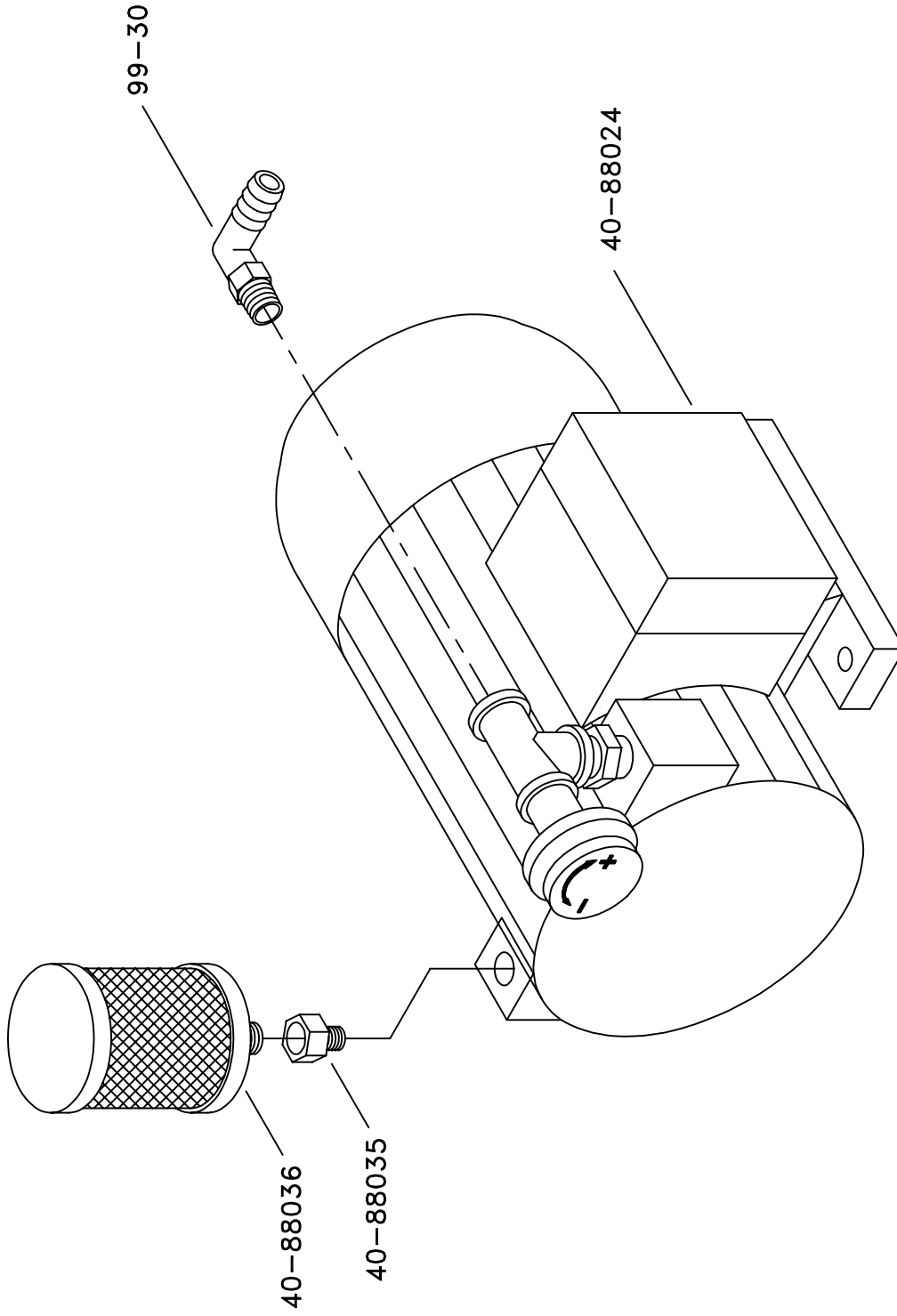
SAKURAI 258 ONLY

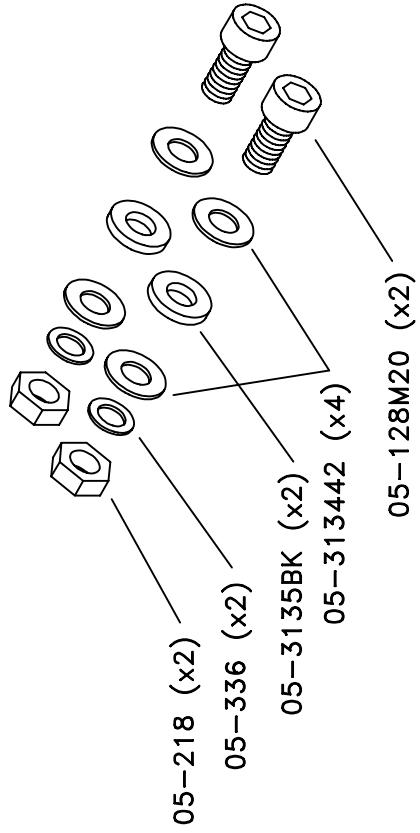
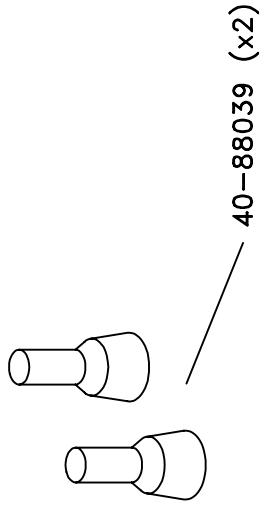
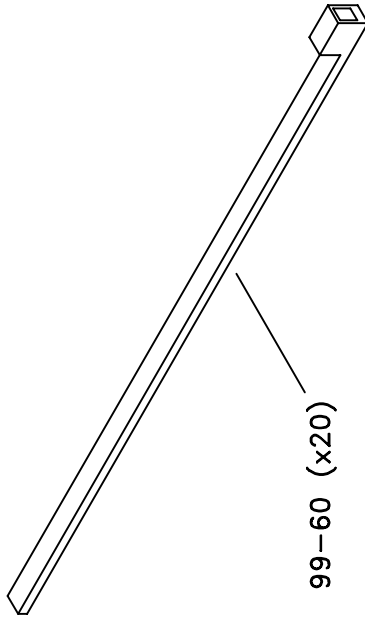
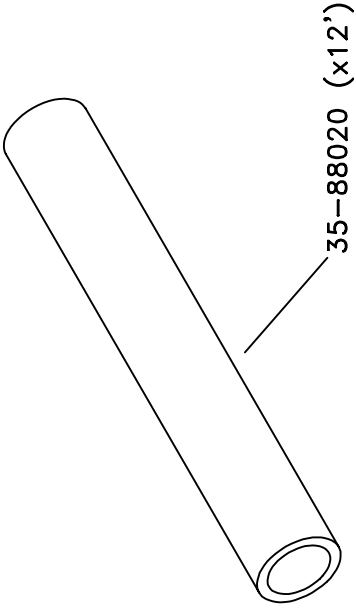
05-128M12  
05-336  
05-313442

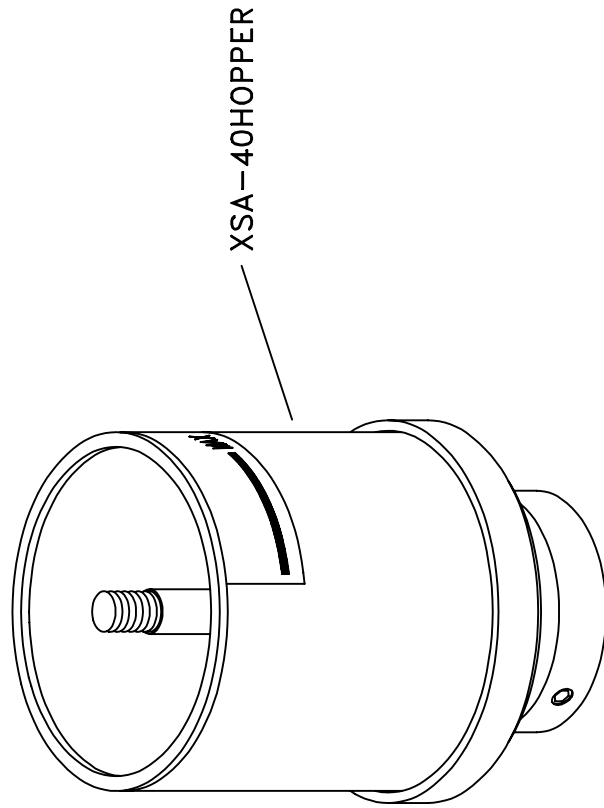
40-02034

40-02035









PPRO-83





**ACCEL**  <sup>®</sup>  
*Graphic Systems*

11103 Indian Trail, Dallas, TX 75229 Phone 972-484-6808, Fax 800-365-6510  
[www.accelgraphicsystems.com](http://www.accelgraphicsystems.com)