

# PowderPro<sup>®</sup> Spray System

## Installation Instructions

Ryobi 512

**ACCEL**  <sup>®</sup>  
Graphic Systems



# GENERAL INFORMATION

**ATTENTION  
POWDERPRO®  
OWNER!**

Accel Graphic Systems provides parts and service through its authorized distributors and dealers. Therefore, all requests for parts and service should be directed to your local dealer.

The philosophy of Accel Graphic Systems is to continually improve all of its products. Written notices of changes and improvements are sent to Accel Graphic Systems' Dealers.

If the operating characteristics or the appearance of your product differs from those described in this manual, please contact your local Accel Graphic Systems Dealer for updated information and assistance.

Always update your equipment when improvements are made available, especially those related to safety.

**YOUR AUTHORIZED POWDERPRO® DEALER IS:**

---

---

---

---

**THE SERIAL NUMBER OF YOUR  
POWDERPRO® IS:**

---

---

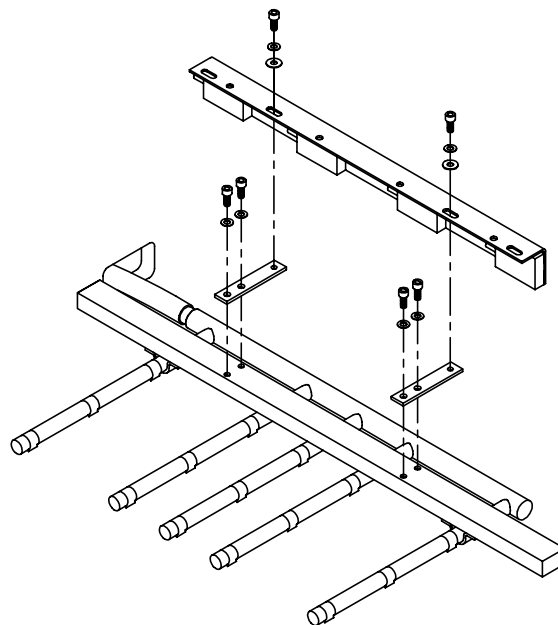
For technical assistance, please call or contact:

**ACCEL GRAPHIC SYSTEMS**  
11103 Indian Trail  
Dallas, TX 75229  
PHONE (972) 484-6808  
FAX (800) 365-6510  
E-MAIL [accel@dallas.net](mailto:accel@dallas.net)  
WEB SITE [www.accelgraphicsystems.com](http://www.accelgraphicsystems.com)

**PowderPro® is covered by U.S. Patents Pending**

---

Diagram 1



# INSTALLATION

**1**

Unplug or disconnect the electrical power to the press.

---

**2**

Remove NOPS lower press cover and NOPS cover below the #2 printing unit.

---

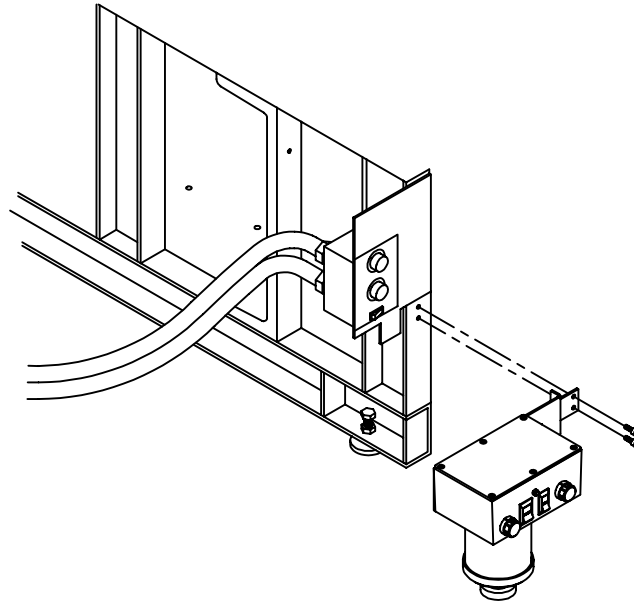
**3**

Disconnect the hose from the spray bar. Remove the original spray bar from the press. Loosen the bolts securing the blow down bar to the tie bar and slide the blow down bar towards the delivery end of the press as far as it will go without interfering with the grippers. Using the original hardware install the new spray bar mounting brackets as shown in the diagram 1. Attach the PowderPro® spray bar to the mounting brackets.

Route the tubing through the same hole in the NOPS press frame that the original hose went through. Use tie-wraps to secure the tubes away from all moving parts.

**5**

Diagram 2



## INSTALLATION

**4**

Remove the hose from the inlet side of the original sprayer's solenoid and coil it up next to the factory blower in the bottom of the press. This blower is not used with the PowderPro®.

---

**5**

Unplug the wire leads from the solenoid. Remove the original hopper and solenoid assembly from the press. Using the original mounting hardware install the new PowderPro® control box as shown in Diagram 2. Attach the tubes from the spray bar to the tubing coming out of the control box. The tubes with the black tape must be attached to the lower two tubes on the control box.

---

**6**

Remove the two wires from the back of the original powder spray on/off switch. Connect the cable coming out of the Powder Pro control box with the green tape on the end of it to the leads removed from the switch.

**7**

Diagram 3

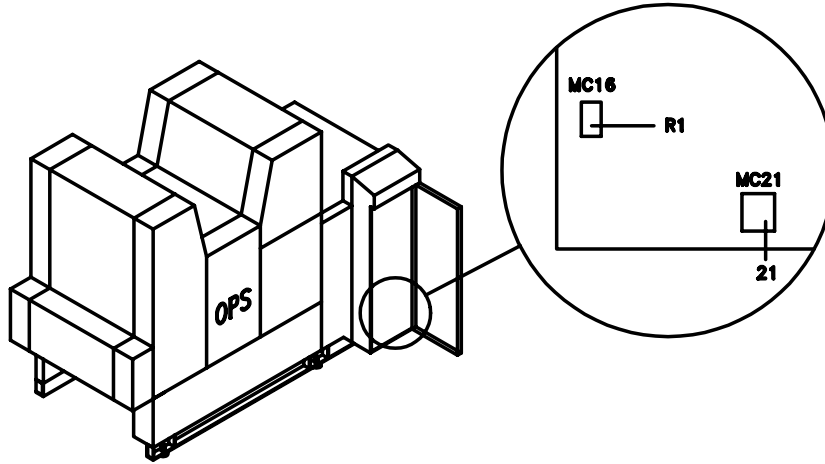
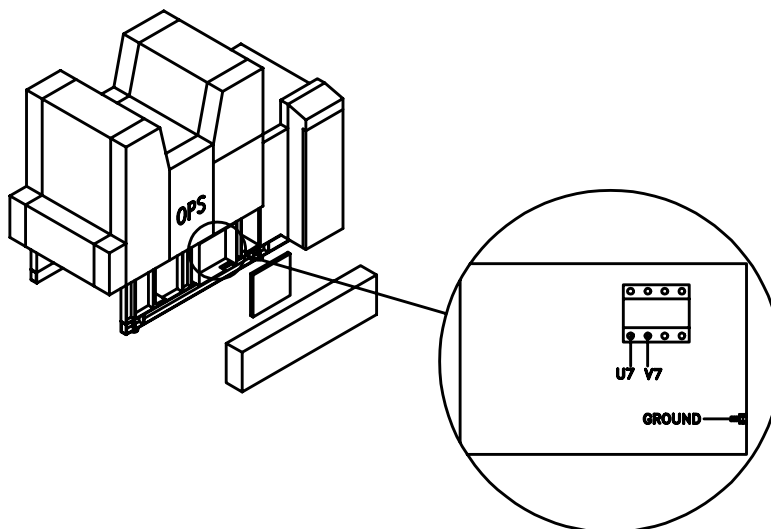


Diagram 4



## INSTALLATION

7

Remove the connectors from the ends of the leads that plugged into the original solenoid wires. Strip about a 1/4" of insulation from the leads. Using the provided closed end splice connectors, connect the leads to the wires in the cable coming from the Powder Pro control box marked with blue tape on the end of it.

8

Route the cable with the red tape on the end of it through the press into the main electrical cabinet on the OPS near the feeder. Secure the cable along the way with the provided tie wraps. Locate the MC16 and MC21 plugs, Diagram 5, on the circuit board in the lower left side of the cabinet. Attach the supplied t-taps connectors to wire R1 on the MC16 plug and wire 21 on the MC21 plug. Plug the connectors on the end of the cable into the t-tap connectors. It does not matter which lead attaches to which t-tap connector.

9

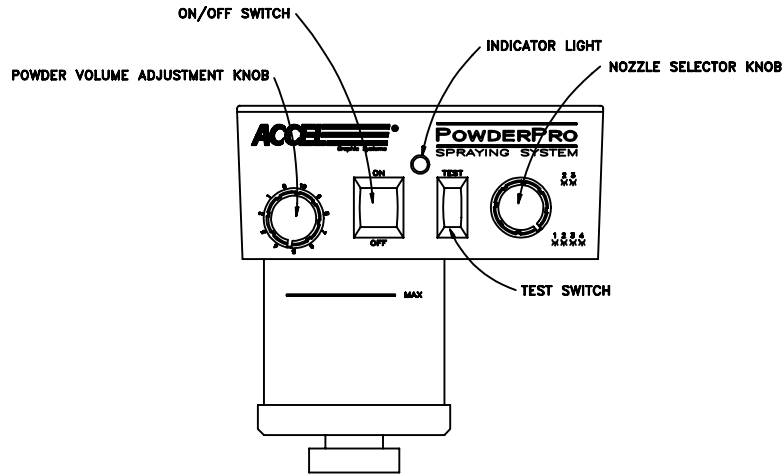
Set the pump on the floor on the NOPS. Route the cable through the press to the electrical box behind the OPS lower side cover. Remove the lower press cover on the OPS and the cover from the electrical box. Route the cable from the pump into the cabinet, Diagram 6. Locate wires U7 & V7 on the relay in the upper right side of the box.

Remove these wires from the relay and replace them with the black & white leads from the pump. Attach the green wire lead to the grounding stud in the lower right side of the box.

Replace all covers and guards. Switch the power to the press ON. Proceed to the next section "OPERATION & MAINTENANCE."

9

## OPERATION AND MAINTENANCE



### POWDERPRO® CONTROLS

#### VOLUME ADJUSTMENT KNOB

Adjusts the amount of powder being sprayed with “0” the minimum and “10” the maximum.

#### ON/OFF SWITCH

When switched to the “ON” position the system is armed and it sprays only when the press goes on impression.

#### INDICATOR LIGHT

This light is illuminated only when the unit is actually spraying. The light goes on and off as sheets pass under the spray nozzles.

#### TEST SWITCH

Use this switch for setting powder volume when not printing. With the system armed, and the pumps on, push the test switch to visually see the amount of powder being sprayed, adjust as desired with volume adjustment knob.

#### NOZZLE SELECTOR KNOB

This knob lets you control which spray nozzles are being used. For maximum width sheets set the selector to the lower position. This setting sprays all four nozzles. For narrow sheets (generally 11" wide or less) set the selector to the upper position. This setting sprays only the center two nozzles.

## OPERATION AND MAINTENANCE

### INITIAL SETTINGS

The initial setting for the powder volume adjustment on an average job is “5.” If more powder is needed than is available at a setting of “10” you need to adjust the pump. If less powder is needed than is available at a setting of “0” you also have to adjust the pump. So that you have a wide range of powder volume adjustment available for different jobs you want your “normal” setting for average jobs to be somewhere in the range from “4” to “6,” otherwise you need to adjust the pump.

### PUMP ADJUSTMENT

On new installations, the pressure regulator on the pump must be adjusted before the system can be used. Powder volume range is adjusted by the outlet pressure of the pump. Locate the adjustment knob on the pump near the outlet hose. Loosen the locking knob and turn the adjustment knob clockwise to increase the pressure for more powder. Turn the knob counter clockwise to decrease pressure for less powder. Set the correct pump pressure as follows:

1. Turn the press pumps on.
2. Turn the powder spray switch to the "On" position.
3. Set the nozzle selector knob on the PowderPro® control box to "4."
4. Set the powder volume adjustment knob to "10."
5. Hold the "Test" switch "On" while looking at the spray nozzles in the delivery.
6. Have someone slowly adjust the pressure on the pump until the powder is barely visible. A powder setting of "10" with visible powder in the delivery is more than enough powder. Consequently, a setting of "5" results in no visible powder but sufficient powder for most jobs.

*If powder is visible at the "5" setting than too much powder is being sprayed. Return to step 3 and reset the pump.*

7. Tighten the locking knob on the pump adjustment before replacing the cover on the press.

## OPERATION AND MAINTENANCE

### MAINTENANCE

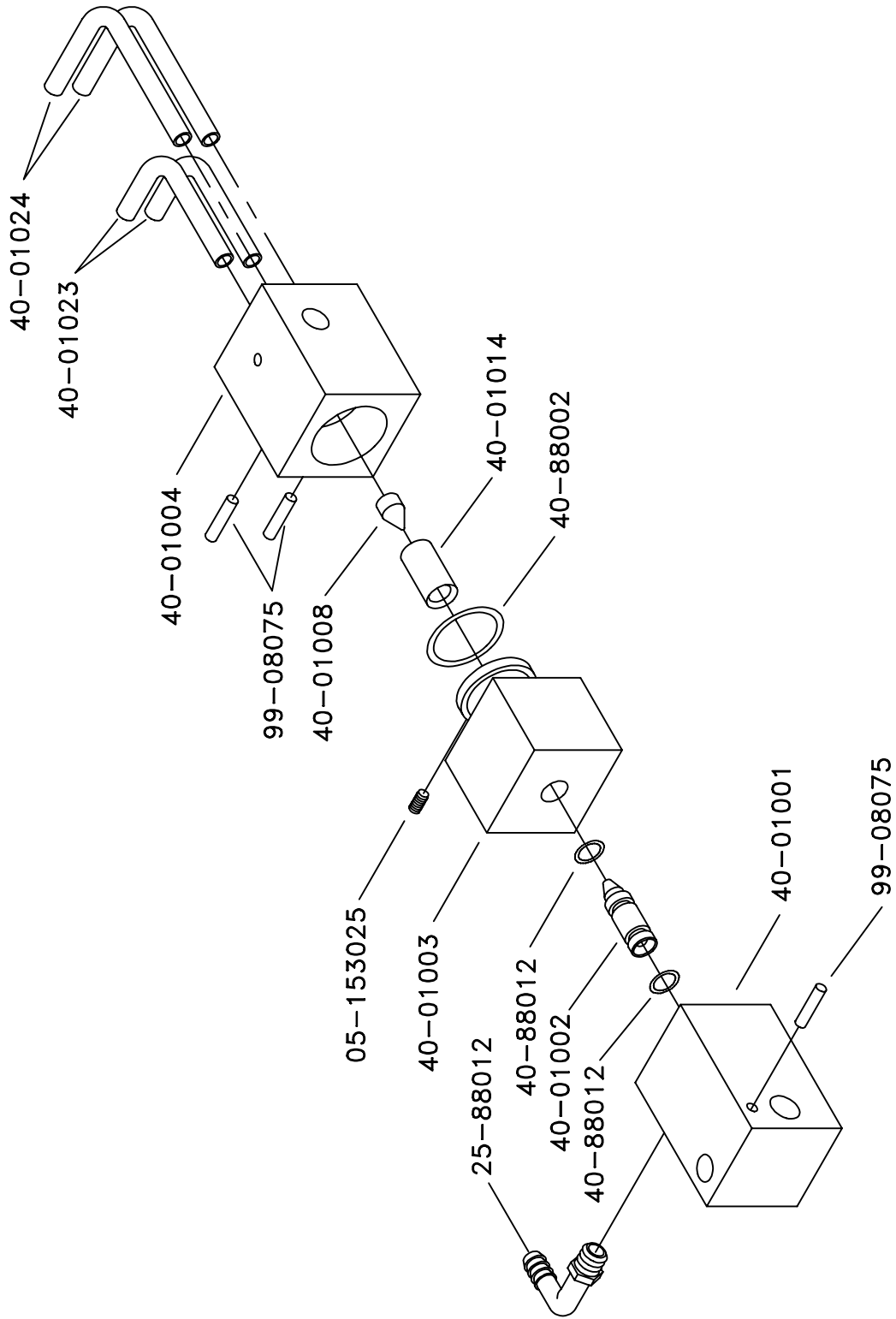
1. Clean the filter on the pump once a week, blowing it clean with compressed air.
2. Remove powder that may accumulate on the bottom of the spray nozzles daily.
3. Never use solvents containing oil when cleaning any part of the sprayer.
4. Use compressed air only if your compressor is equipped with a proper in-line dryer. Otherwise, use canned air. Moisture in the sprayer will affect its performance.

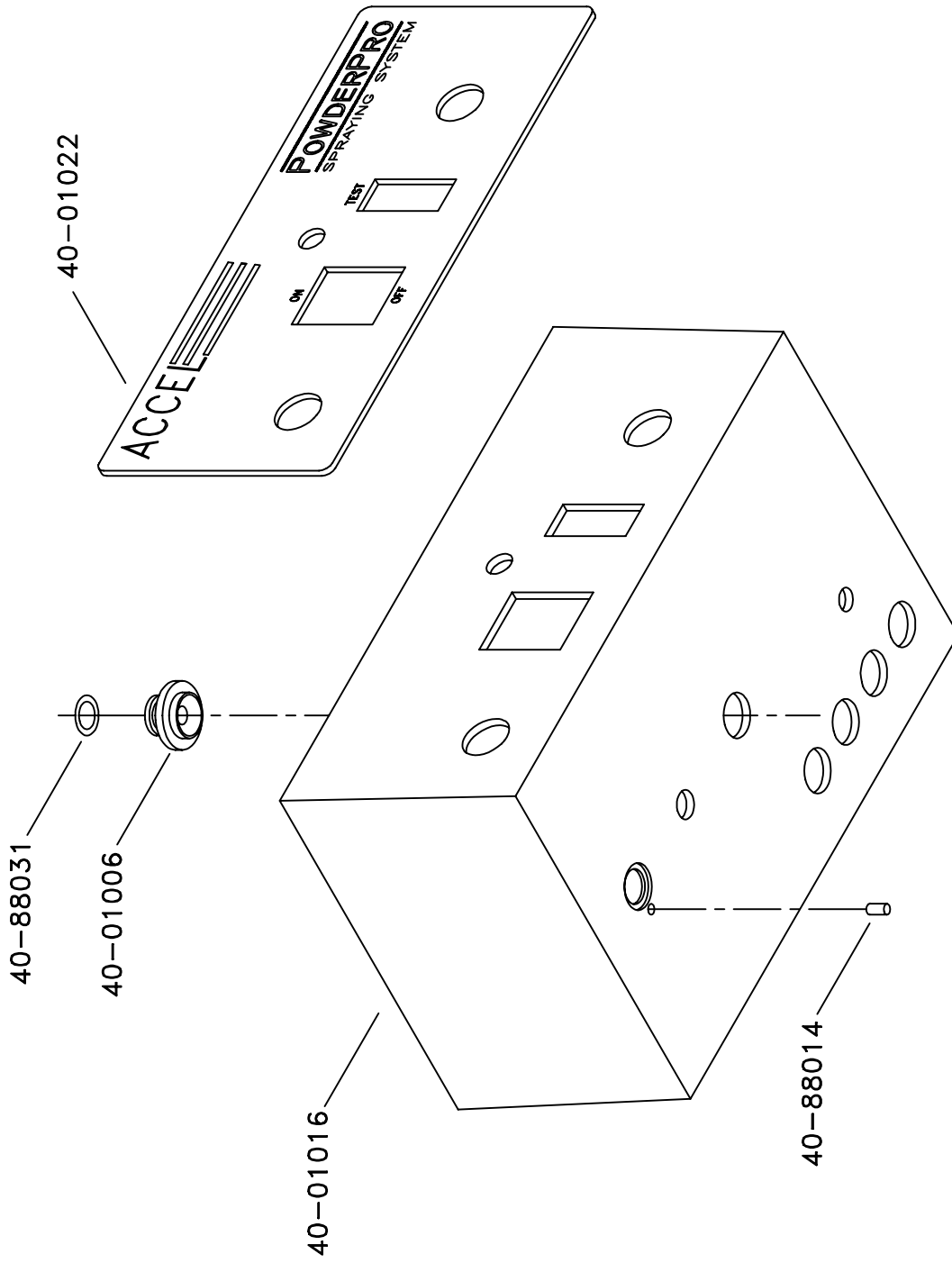
### OPERATION

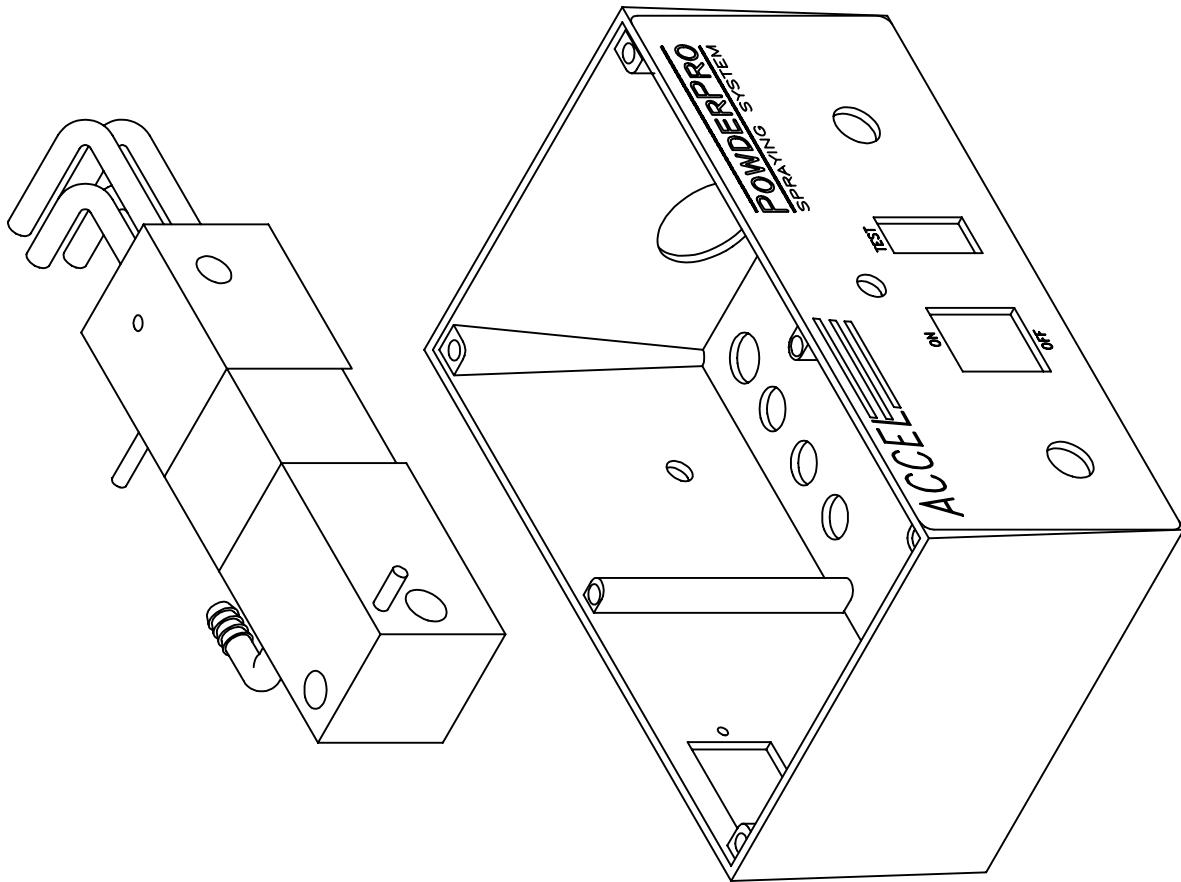
1. Fill the powder hopper with an intermediate grain (20-25) powder (available from Accel) up to the "MAX" line on the hopper.
2. Place the ON/OFF switch to the "ON" position.
3. Consider the sheet width and if necessary change the spray nozzle selector knob. When switching from four to two nozzles reduce the total amount of powder being sprayed by turning the powder volume adjustment knob to a lower number.

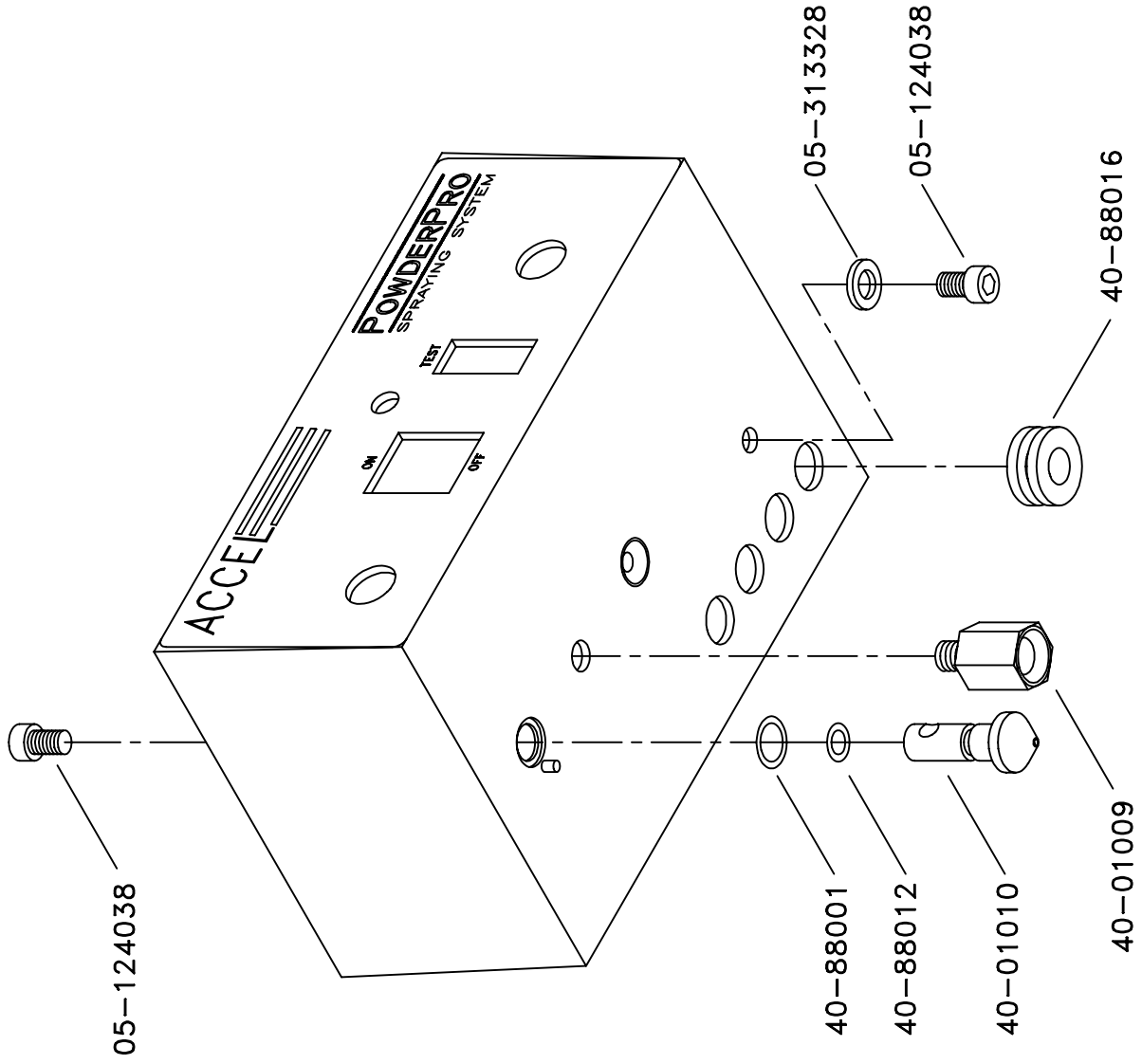
Switching from four to two nozzles only changes the spray width, not the volume.

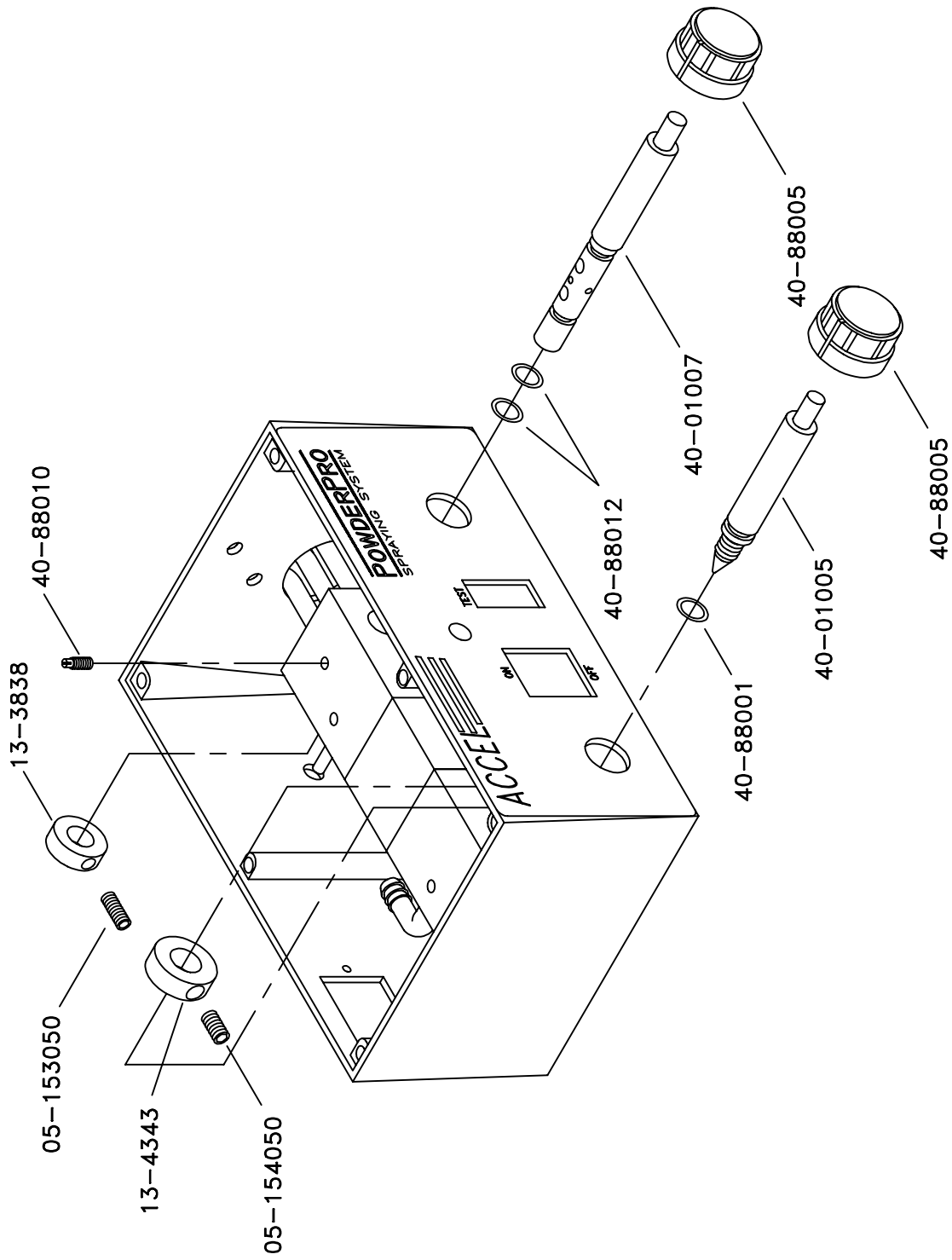
4. The spray length is automatically controlled by the press.
5. Adjust the powder volume adjustment knob if necessary.
6. The sprayer operates automatically when the press goes on impression when a sheet is present.



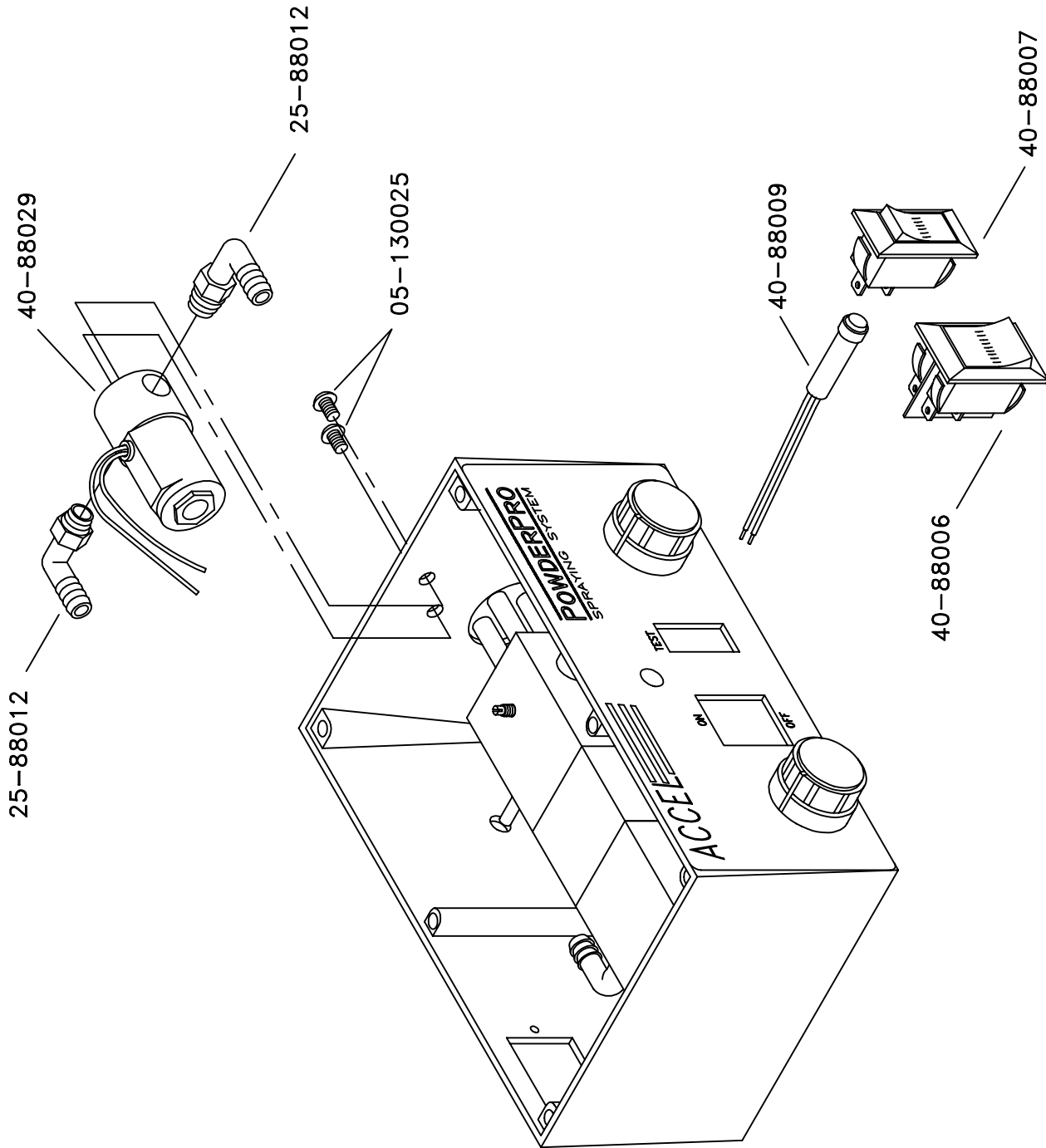


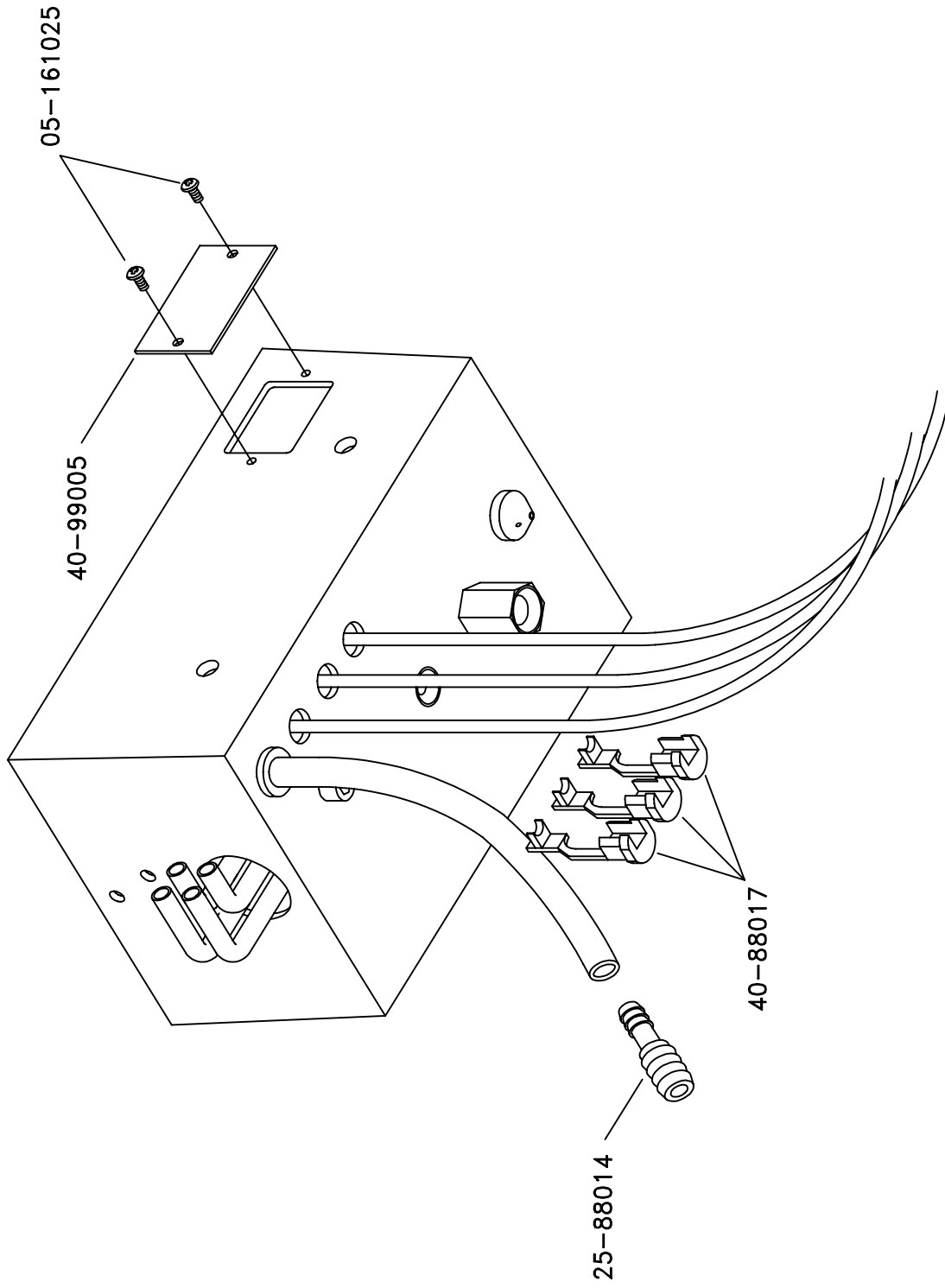


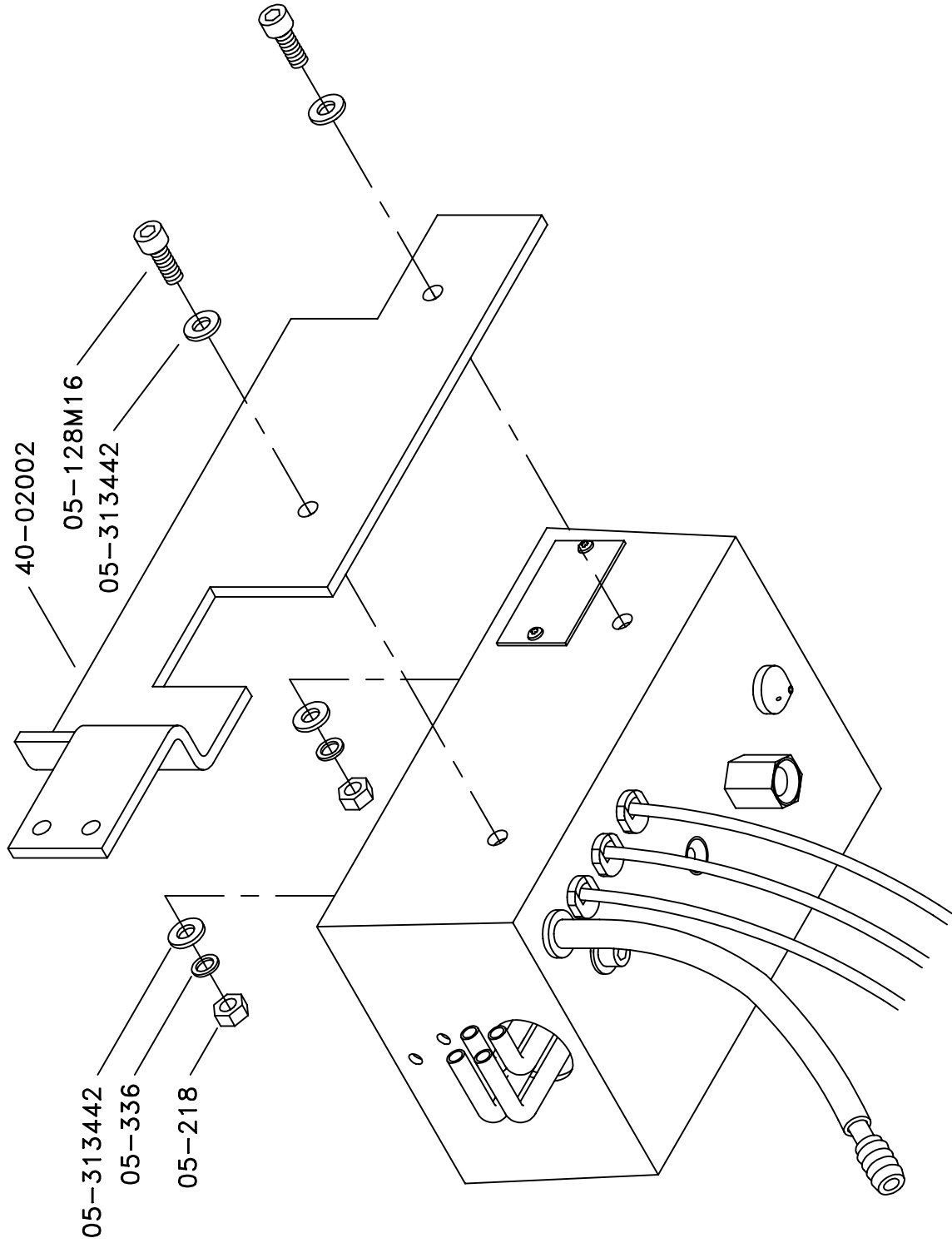


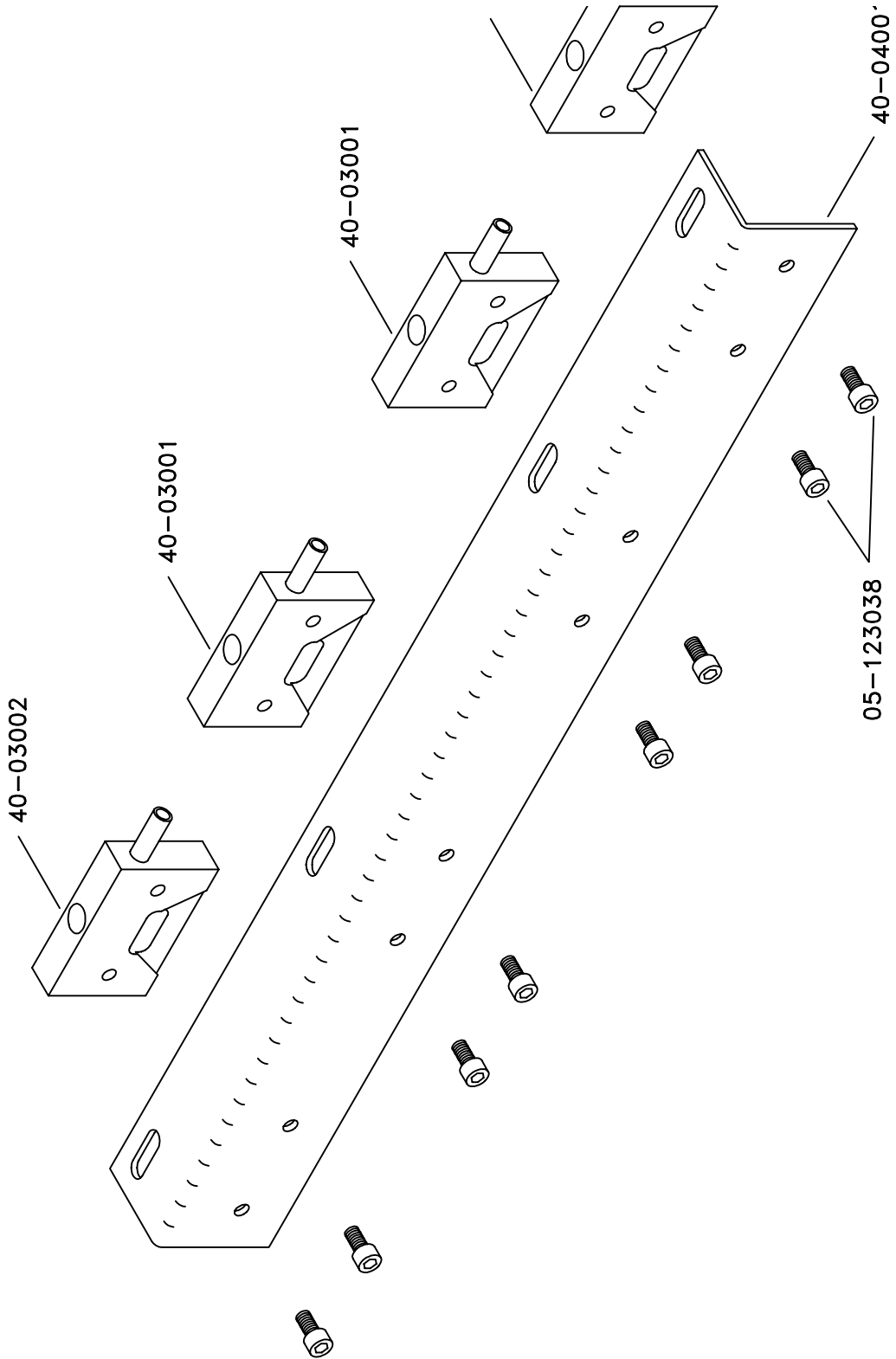


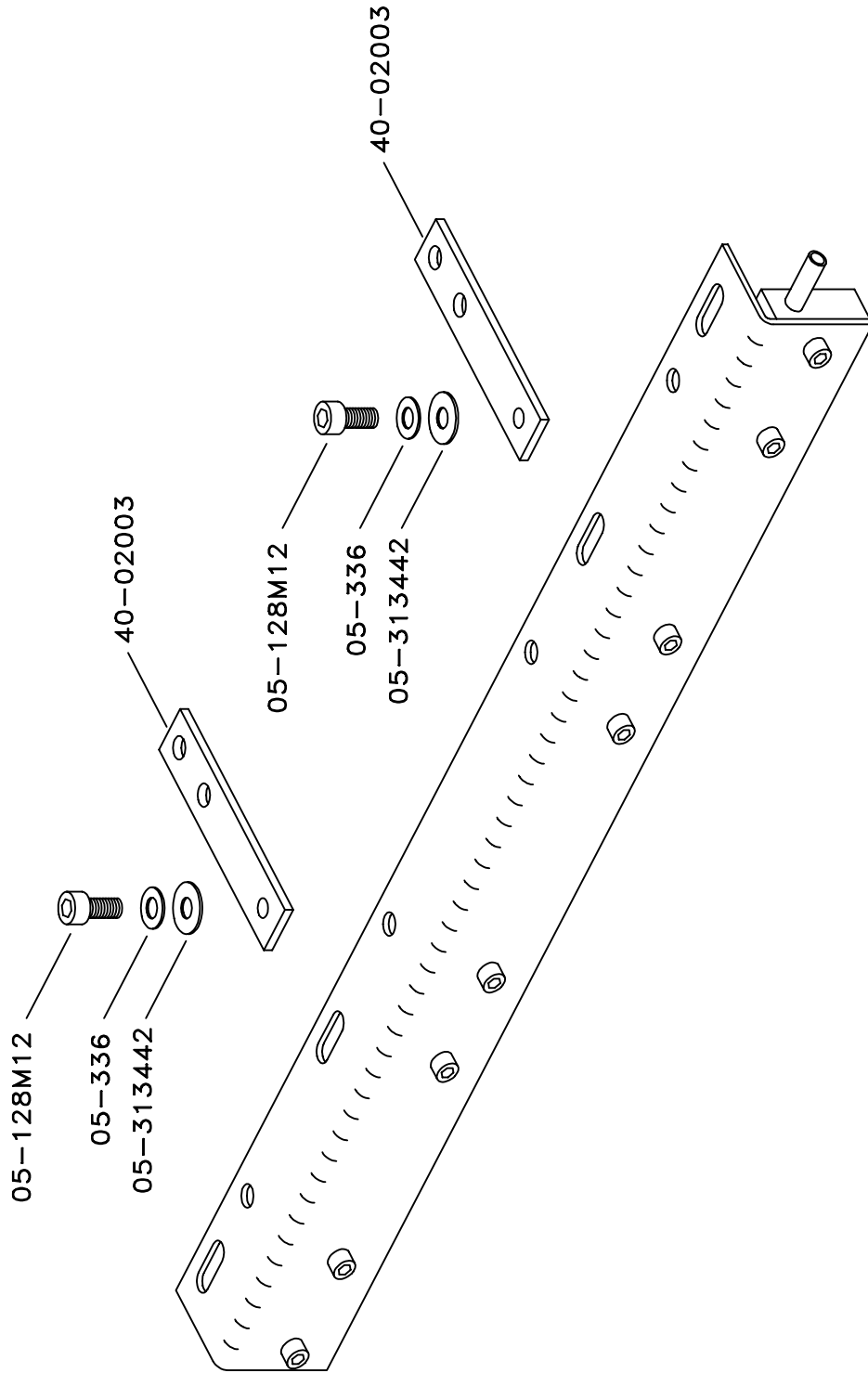
PPRO-15

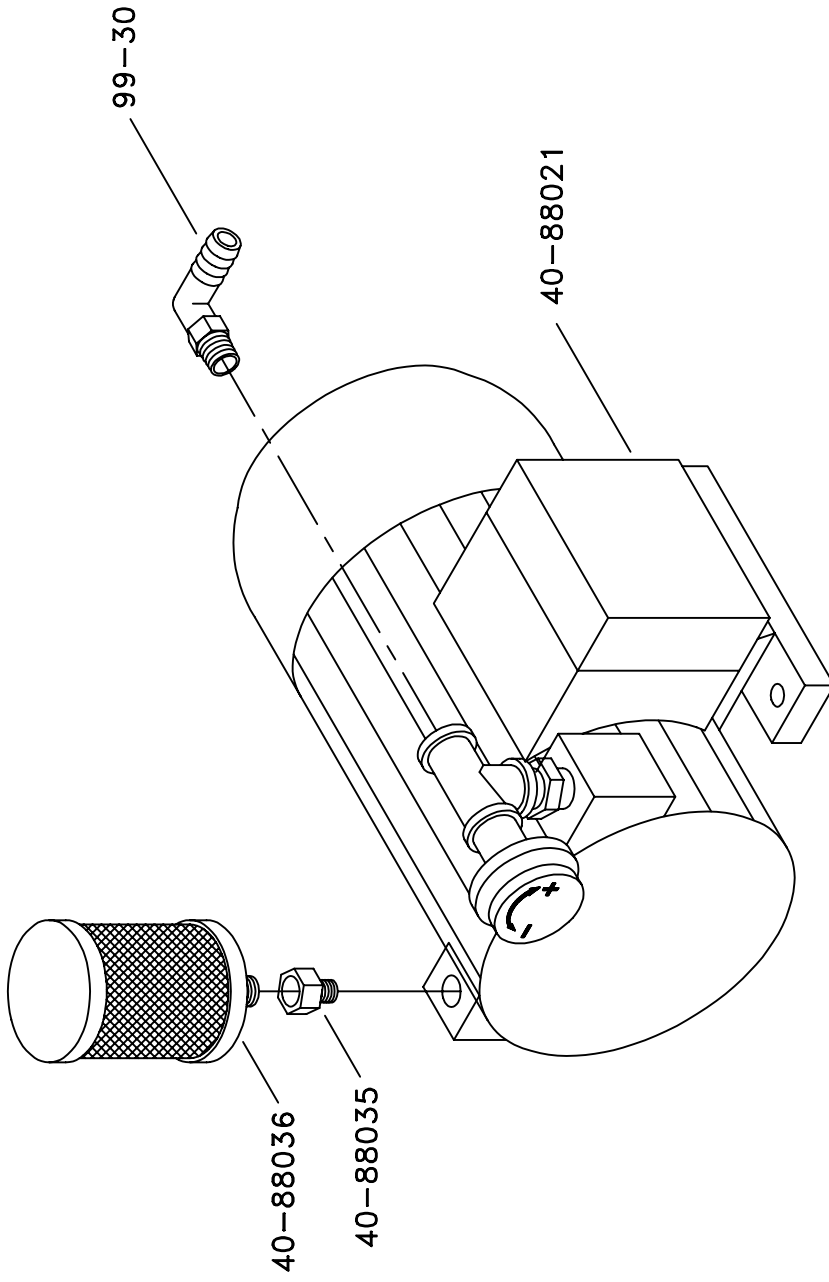


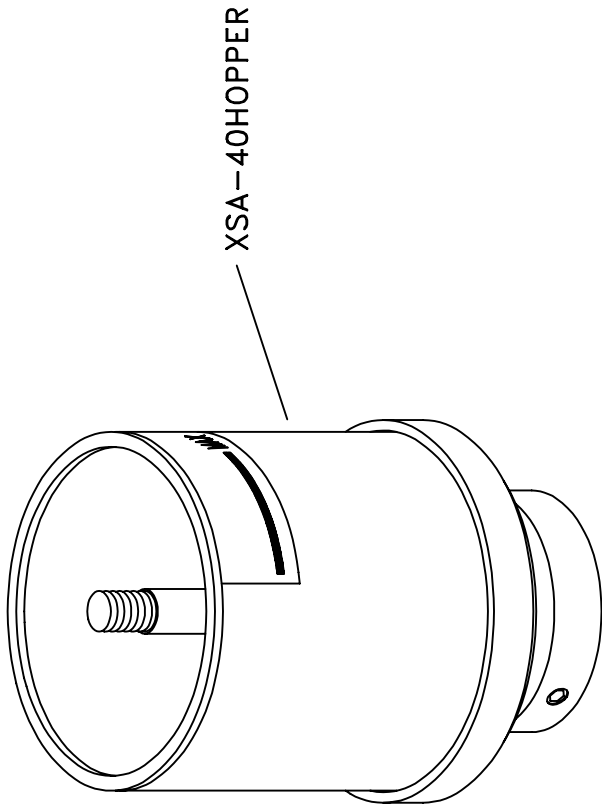


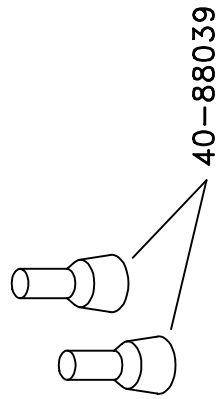
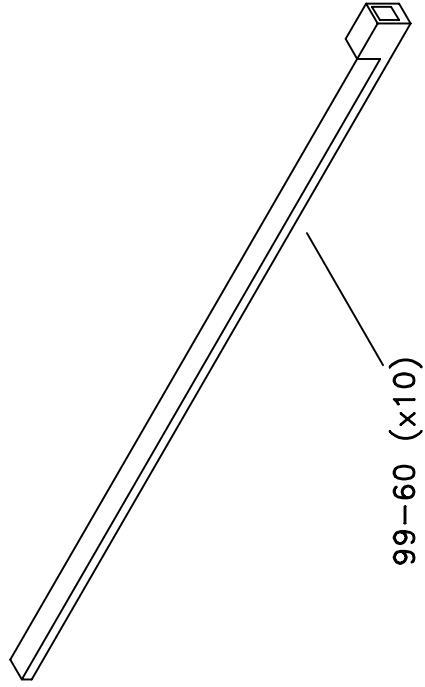
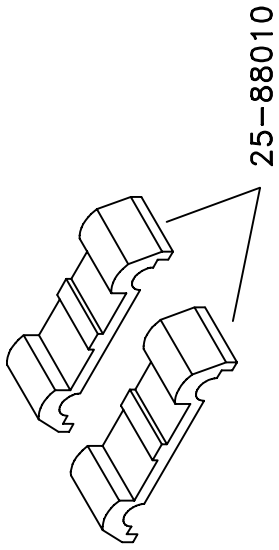
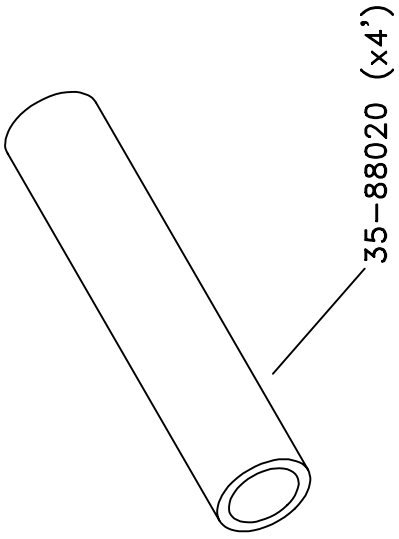
















**ACCEL**  <sup>®</sup>  
*Graphic Systems*

11103 Indian Trail, Dallas, TX 75229 Phone 972-484-6808, Fax 800-365-6510  
E-mail [accel@dallas.net](mailto:accel@dallas.net), Web Site [www.accelgraphicsystems.com](http://www.accelgraphicsystems.com)