

# PowderPro<sup>®</sup> Spray System

## Installation Instructions

Ryobi 2800/3200/MCD

**ACCEL**  <sup>®</sup>  
*Graphic Systems*



# GENERAL INFORMATION

**ATTENTION  
POWDERPRO®  
OWNER!**

Accel Graphic Systems provides parts and service through its authorized distributors and dealers. Therefore, all requests for parts and service should be directed to your local dealer.

The philosophy of Accel Graphic Systems is to continually improve all of its products. Written notices of changes and improvements are sent to Accel Graphic Systems' Dealers.

If the operating characteristics or the appearance of your product differs from those described in this manual, please contact your local Accel Graphic Systems Dealer for updated information and assistance.

Always update your equipment when improvements are made available, especially those related to safety.

**YOUR AUTHORIZED POWDERPRO® DEALER IS:**

---

---

---

---

**THE SERIAL NUMBER OF YOUR POWDERPRO® IS:**

---

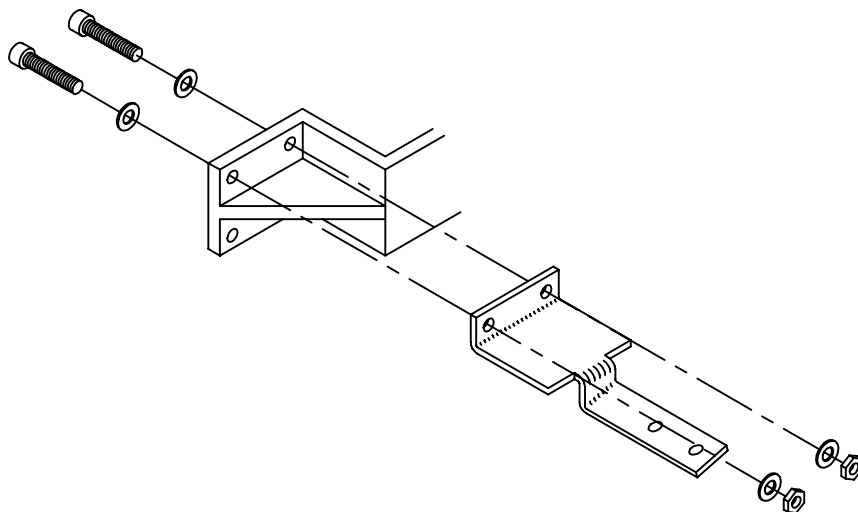
---

For technical assistance, please contact:

**ACCEL GRAPHIC SYSTEMS**  
**11103 Indian Trail**  
**Dallas, TX 75229**  
**PHONE (972) 484-6808**  
**FAX (800) 365-6510**  
**E-MAIL [accel@dallas.net](mailto:accel@dallas.net)**  
**WEB SITE [www.accelgraphicsystems.com](http://www.accelgraphicsystems.com)**

**PowderPro® is covered by U.S. Patents Pending**

Diagram A



# INSTALLATION

**1**

Disconnect the electrical power to the press.

---

**2**

Remove the OPS & NOPS delivery side covers, and the OPS & NOPS upper and lower press side covers.

---

**3**

Locate the two cast brackets (one each at the OPS and NOPS) that support the ends of the delivery cylinder shaft. Remove the upper two bolts that secure the NOPS casting to the delivery frame. Using the provided hardware install the NOPS PowderPro® mounting bracket as shown in diagram A. If the press is also equipped with a Tempest® dryer then the mounting bracket for the PowderPro® will install on top of the Tempest® mounting brackets.

**5**

Diagram B

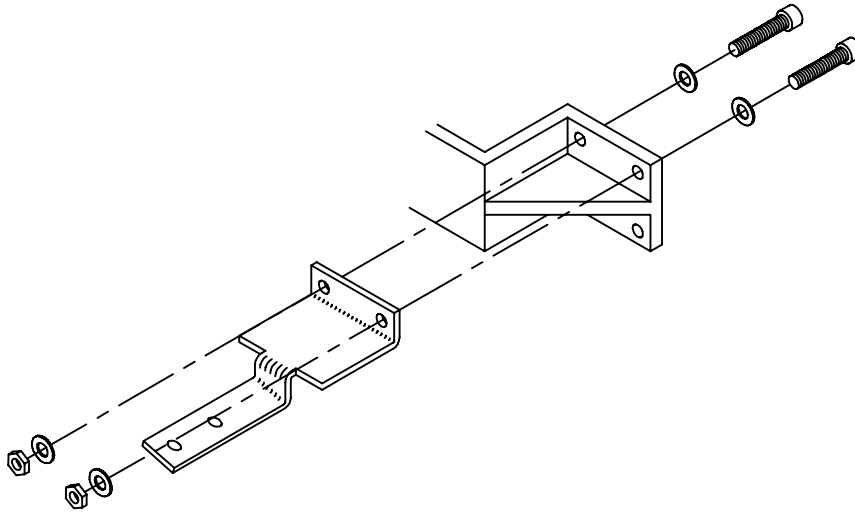


Diagram C

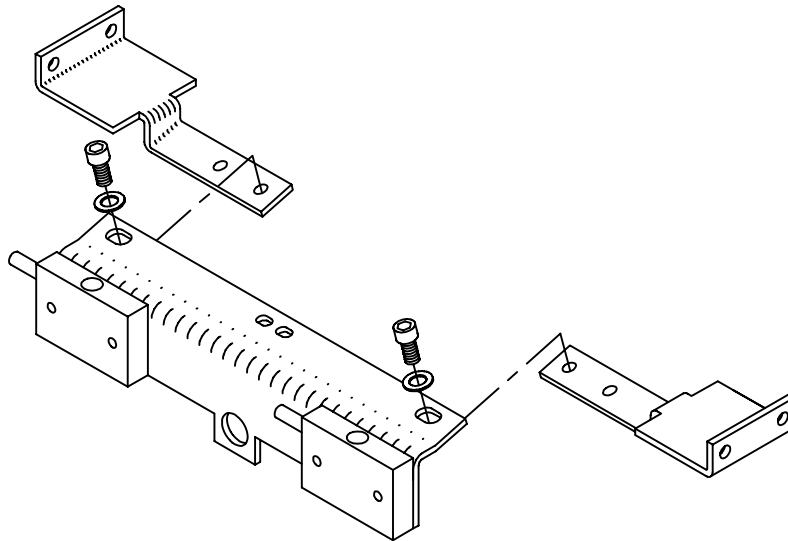
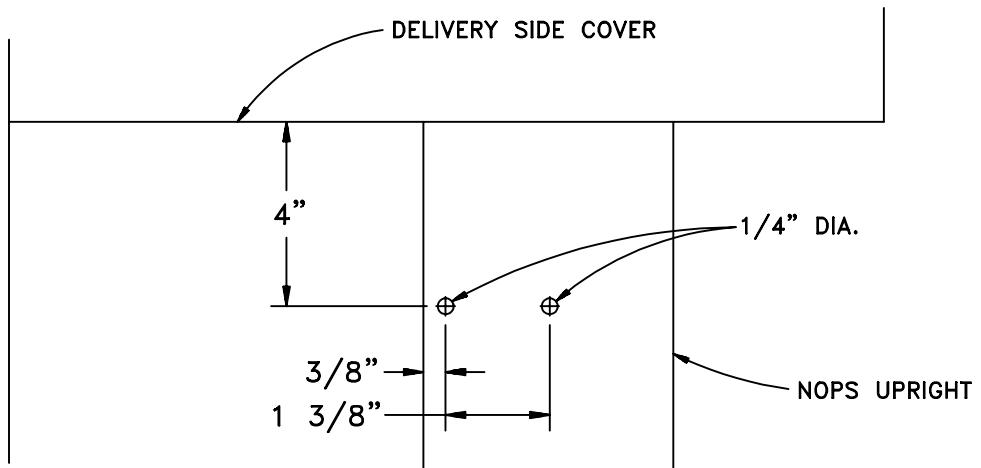


Diagram D



## INSTALLATION

**4**

Repeat the previous procedure for the OPS mounting bracket as shown in diagram B.

---

**5**

Attach the spray head assembly to the mounting brackets using the provided hardware as shown in diagram C. Use the inside set of holes for a 3200 and the outside holes for a 2800. Route the hoses between the lower chain and the delivery press frame on the NOPS side. Use the provided tie-wraps to secure the hoses away from any moving parts in the delivery.

---

**6**

Using diagram D as a guide drill two 1/4" dia. holes through the NOPS delivery support upright. Before drilling make sure that the holes will not interfere with the chain on the inside of the upright.

**7**

Diagram E

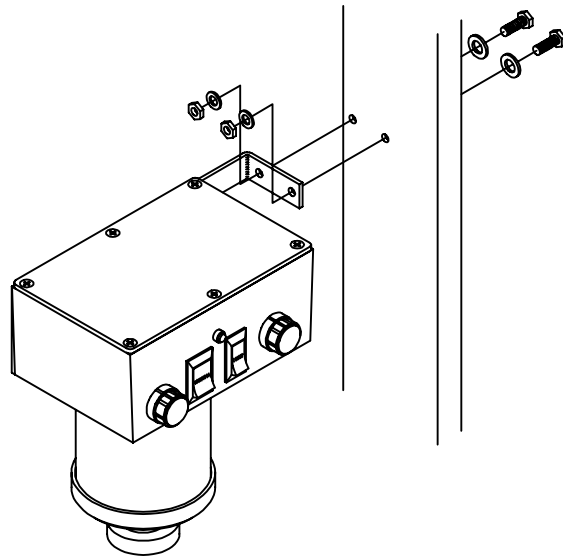


Diagram F

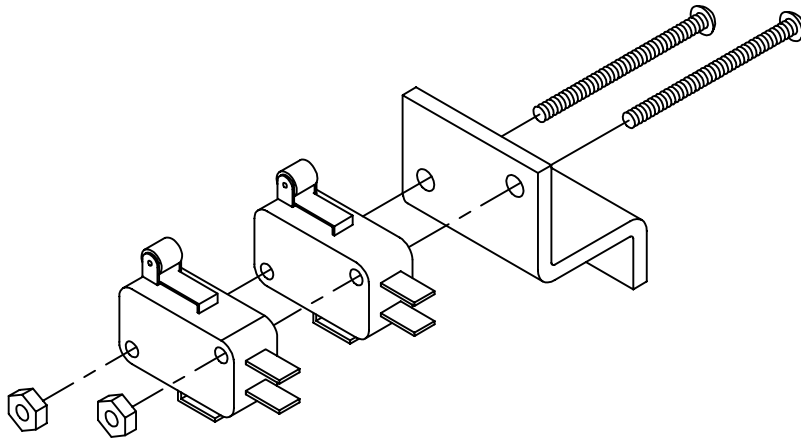
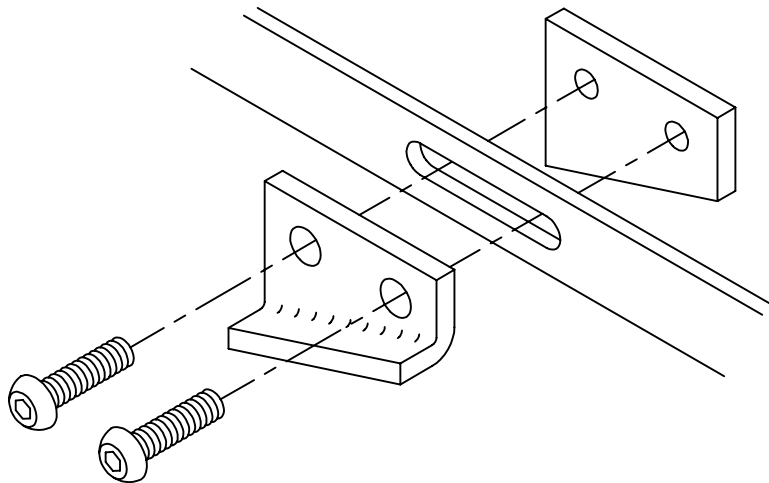


Diagram G



## INSTALLATION

7

Using the provided hardware mount the control box assembly to the upright as shown in diagram E.

---

8

**THE NEXT TWO STEPS ARE FOR 3200 PRESSES, FOR THE 2800 SKIP TO STEP 10.**

Locate the paper feed sensing switch mounted to the press frame on the OPS. Remove the bracket from the press with the switch attached. Using the provided longer screws and nuts attach the provided switch to the existing one as shown in diagram F. Replace the bracket on the press.

---

9

Using the provided longer screws attach the new actuator arm to the existing one that is attached to the linkage above the switch installed in the previous step (see diagram G). **SKIP TO STEP 12.**

9

Diagram H

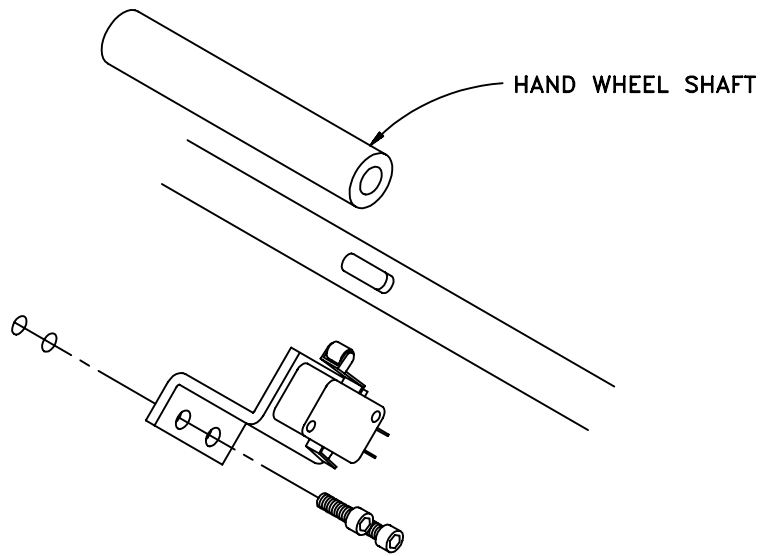


Diagram I

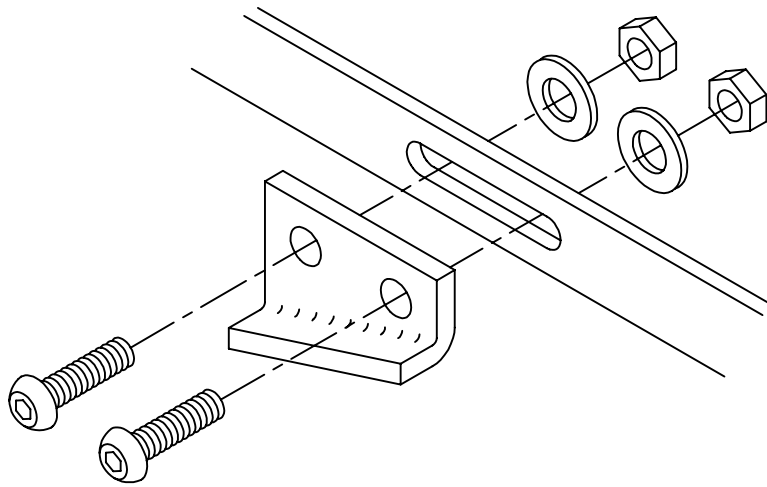
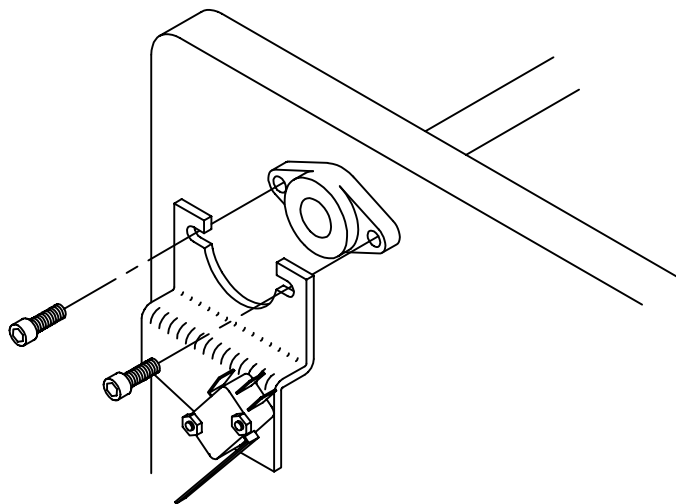


Diagram J



## INSTALLATION

**10**

**THIS STEP FOR 2800 PRESSES ONLY.**

Using the provided hardware attach the micro switch mounting bracket to the two existing tapped holes in the OPS press frame. These holes are below the hand wheel shaft as shown in diagram H.

---

**11**

**THIS STEP FOR 2800 PRESSES ONLY.**

Using the provided hardware attach the actuator arm to the slot in the existing linkage arm above the switch installed in the previous step (see diagram I).

---

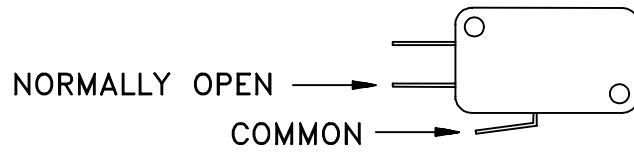
**12**

Remove the existing screws that secure the feeder arm pivot bushing housing to the NOPS press frame. Using the provided longer screws attach the microswitch bracket to the housing as shown in diagram J.

**11**

---

Diagram K



## INSTALLATION

**13**

The next two steps refer to cable with different colored tape on the ends. This is actually two separate two-conductor cables that share a single connector where they connect to the PowderPro® control box. The cable needs to be routed into the press by going under the bed frame of the press under the delivery. Once inside the bed frame the cables are separated and routed according to the next two steps. Use the tie wraps to secure the cable away from the delivery table and any other moving parts.

---

**14**

Route the cable with the red tape on the end of it to the switch mounted on the OPS in step 8 (or step 10 if a 2800 press). Connect the cable to the NO (normally open) contacts on the switch (see diagram K). Route the cable along with the existing cables and secure it with the provided tie-wraps.

---

**15**

Route the cable with the green tape on the end of it to the switch mounted on the NOPS in step 12. Connect the cable to the NO contacts on the switch (see diagram H). Route the cable along with the existing cables and secure it with the provided tie-wraps.



## INSTALLATION

**16**

Set the provided pump on the floor on the NOPS of the press. Connect the cable coming out of the pump to the appropriate receptacle on the PowderPro® control box. Connect the air supply hose to the barbed fitting on the hose coming out of the control box.

---

**17**

Connect the tubes coming from the spray heads to the tubes coming out the end of the PowderPro® control box. Plug the power cord into a 110V wall receptacle. The maximum current draw is 3 amps.

**This completes the installation. Continue on to “OPERATION & MAINTENANCE” to properly set and maintain the PowderPro® sprayer.**

---

**15**

## OPERATION AND MAINTENANCE

### POWDERPRO® CONTROLS

#### VOLUME ADJUSTMENT KNOB

Adjusts the amount of powder being sprayed with "0" the minimum and "10" the maximum.

#### ON/OFF SWITCH

When switched to the "MANUAL PUMP ON" position the pump will come on to allow for spray volume setting. When switched to the "NORMAL OPERATION" position, the system is armed and will spray only when the press goes on impression. The center position is off.

#### INDICATOR LIGHT

This light is illuminated only when the unit is actually spraying. The light will go on and off as sheets pass under the spray nozzles.

#### TEST SWITCH

Use this switch for setting powder volume when not printing. With the on/off switch set to "MANUAL PUMP ON," push the test switch to visually see the amount of powder being sprayed, adjust if necessary.

### PUMP ADJUSTMENT

Before the PowderPro® spray system can be used, the pump pressure must be calibrated to allow for maximum adjustment to cover a wide range of jobs. The powder volume adjustment range is controlled by the outlet pressure of the pump. Locate the adjustment knob on the pump near the outlet hose. Loosen the locking knob and turn the adjustment knob clockwise to increase the pressure for more powder. Turn the knob counterclockwise to decrease pressure for less powder. Set the correct pump pressure as follows:

1. Turn the pump on by switching the ON/OFF switch to the "MANUAL PUMP ON" position.
2. Set the volume adjustment knob to "10" (MAX).
3. Hold the TEST switch ON while looking at the spray nozzles in the delivery.

## **OPERATION AND MAINTENANCE**

4. Have someone slowly adjust the pressure on the pump until the powder is barely visible. A powder setting of "10" with visible powder in the delivery is more than enough powder. Consequently, a setting of "5" results in no visible powder but sufficient powder for most jobs.
5. Tighten the locking knob on the pump adjustment.

### **INITIAL SETTINGS**

The initial setting for the powder volume adjustment knob on an average job is "5." If more powder is needed than is available at a setting of "10" you will need to adjust the pump. If less powder is needed than is available at a setting of "0" you also have to adjust the pump. In order to have a wide range of powder volume adjustment available for different jobs, the "normal" setting for average jobs should be somewhere in the range from "4" to "6." Otherwise you will need to adjust the pump.

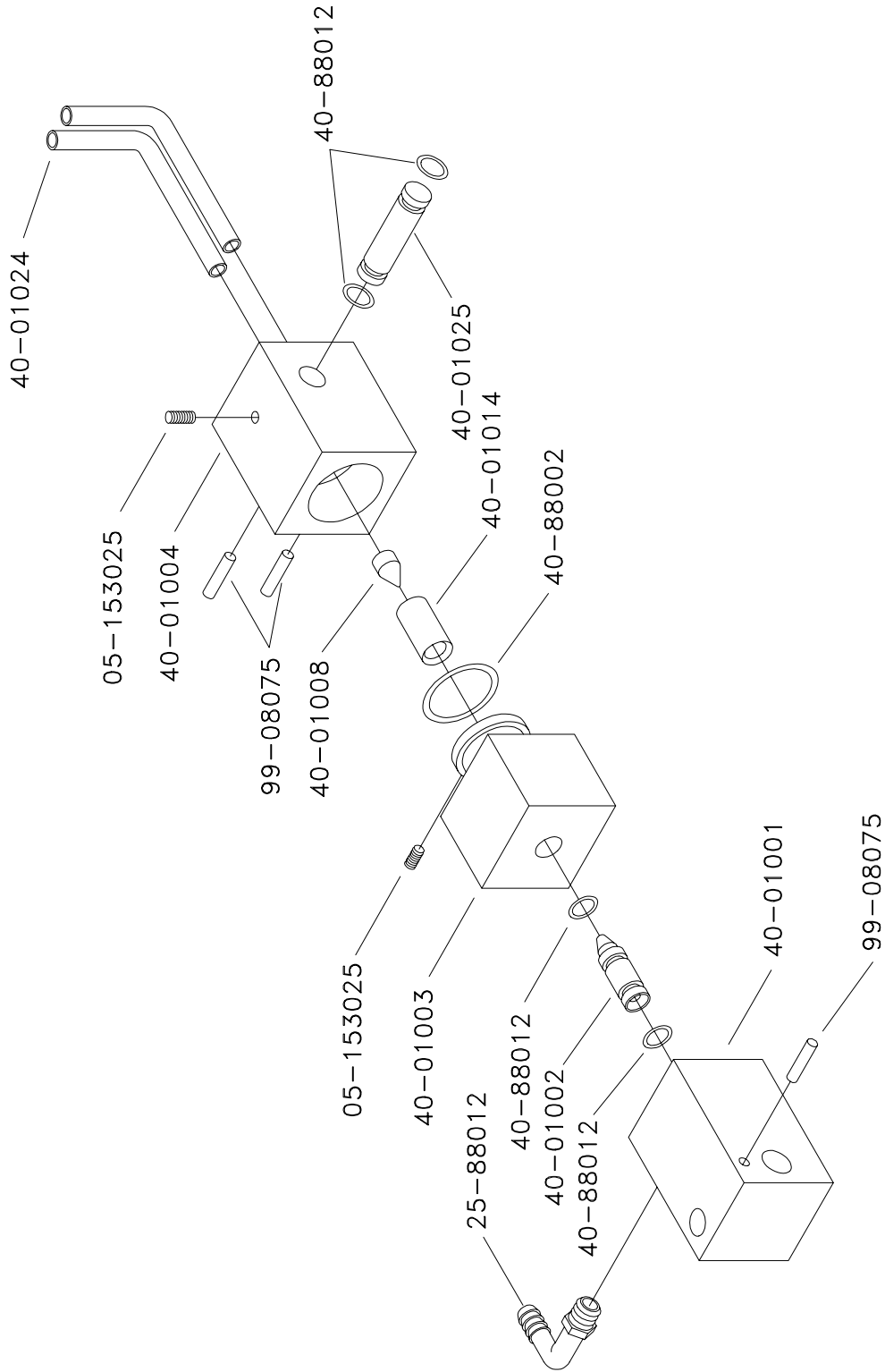
### **OPERATION**

1. Fill the powder hopper with an intermediate grain (20-25) powder (available from Accel) up to the "MAX" line on the hopper.
2. Place the ON/OFF switch to the "NORMAL OPERATION" position.
3. Consider the sheet width and if necessary change the spray nozzle selector knob. When switching from a four nozzle to a two nozzle setting, you must readjust the powder volume.
4. The spray length is automatically controlled by the press.
5. Adjust the powder volume adjustment knob if necessary.
6. The powder sprayer will operate automatically when the press goes on impression and a sheet is present.

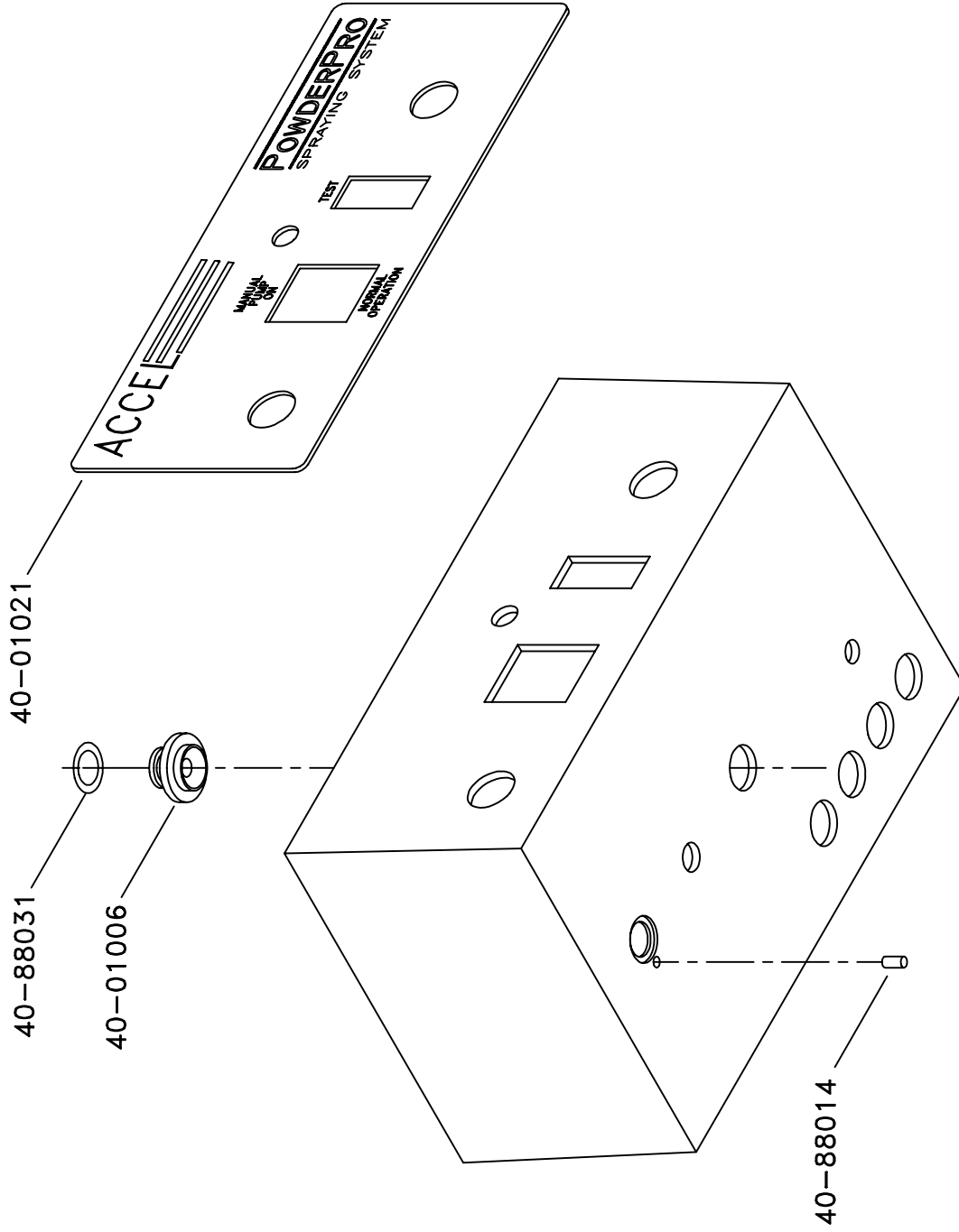
## **OPERATION AND MAINTENANCE**

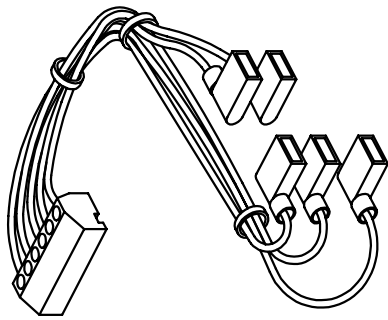
### **MAINTENANCE**

1. Clean the filter on the pump once a week, blowing it clean with compressed air.
2. Remove any powder that may have accumulated on the bottom of the spray nozzles daily.
3. Never use solvents containing oil when cleaning any part of the sprayer.
4. Use compressed air only if your compressor is equipped with a proper in-line dryer. Otherwise, use canned air. Moisture in the sprayer will affect its performance.

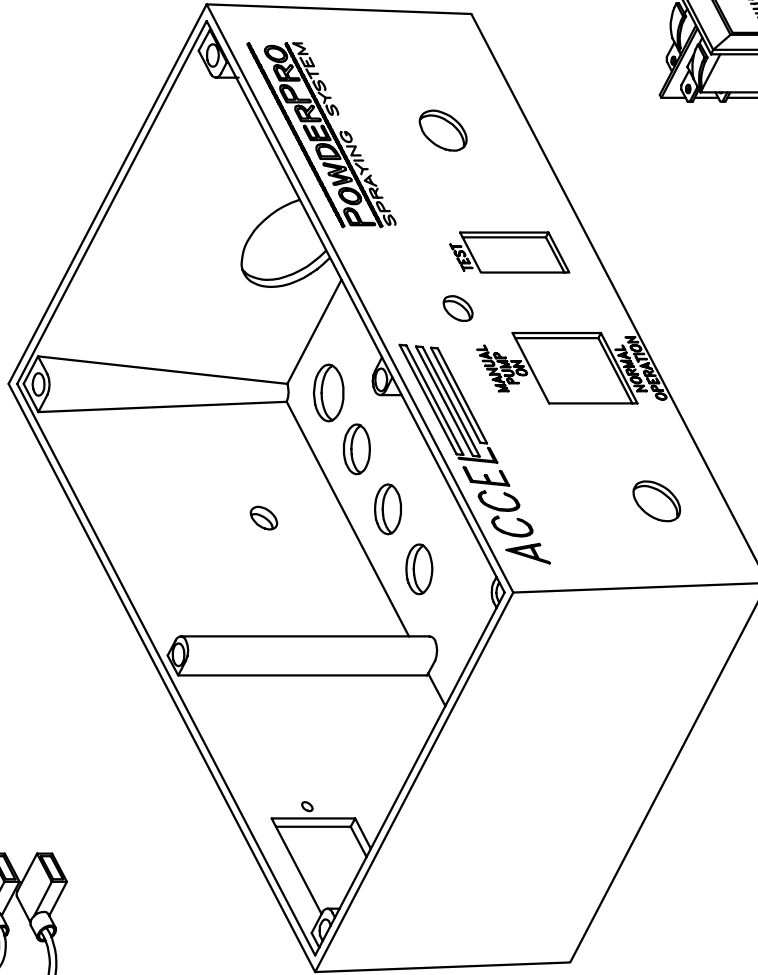


3200P4



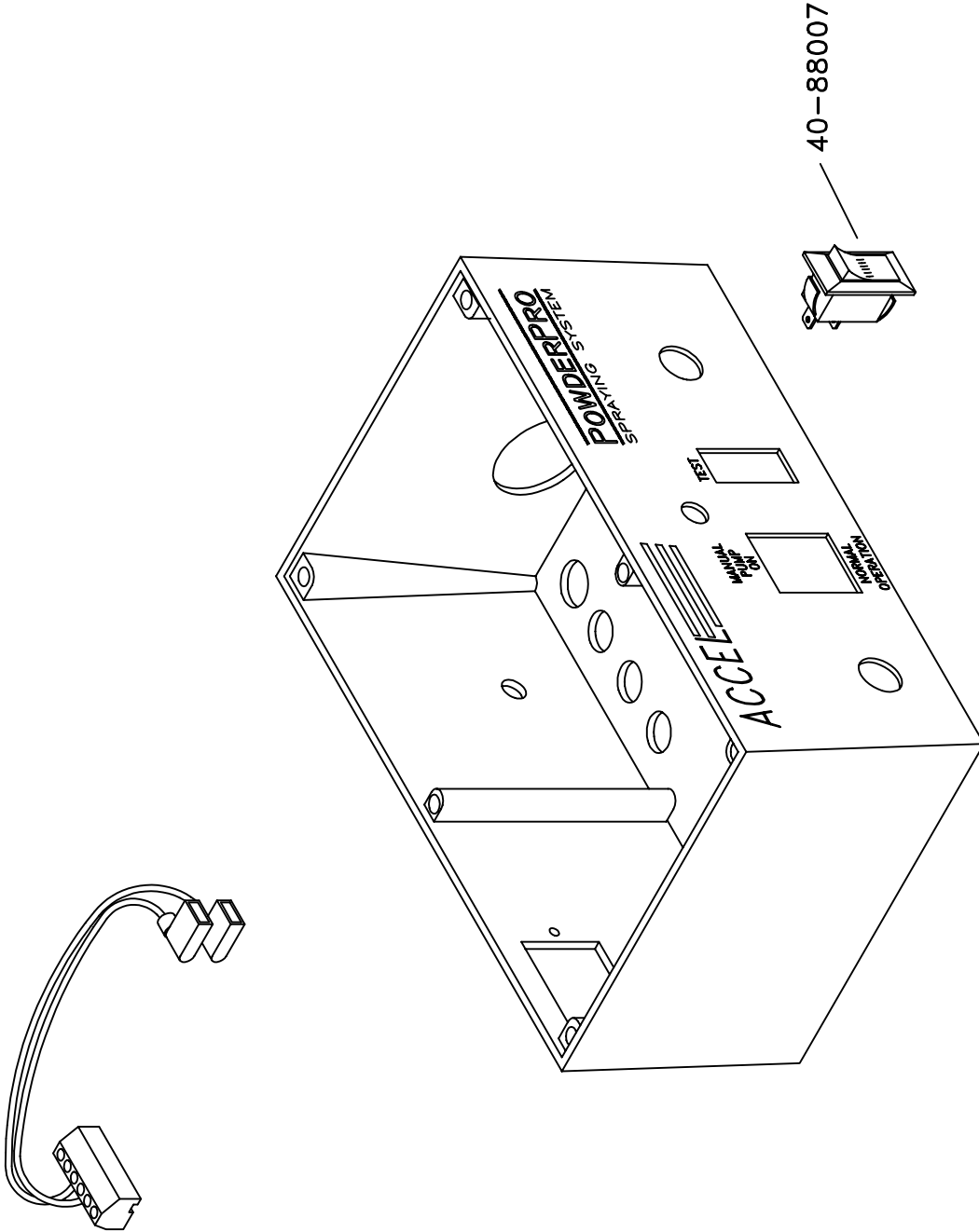


WIRE COLOR	SWITCH POSITION NO.
RED	12
ORANGE	11
BLUE	13
WHITE	24
BLACK	26

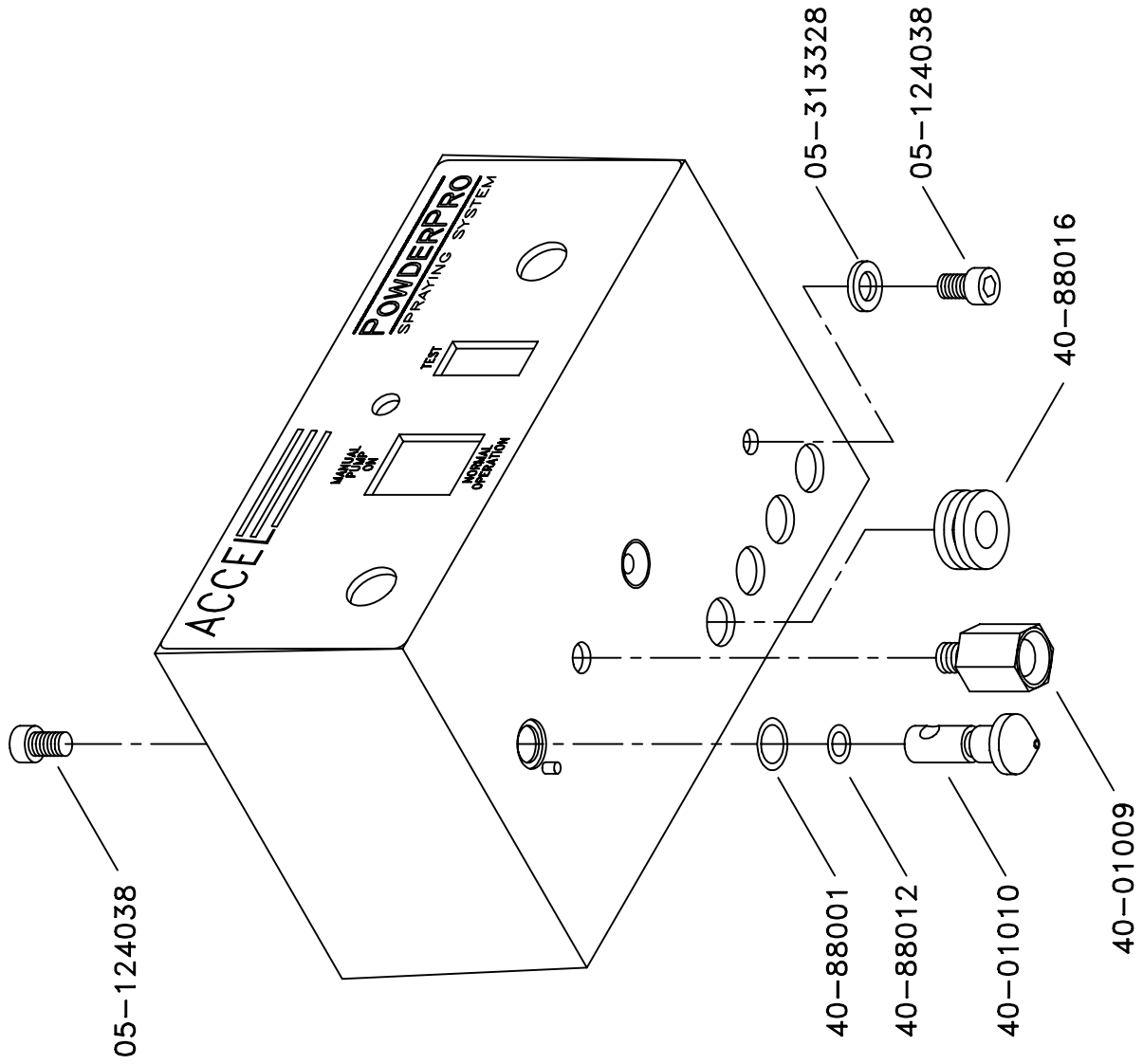


40-88042



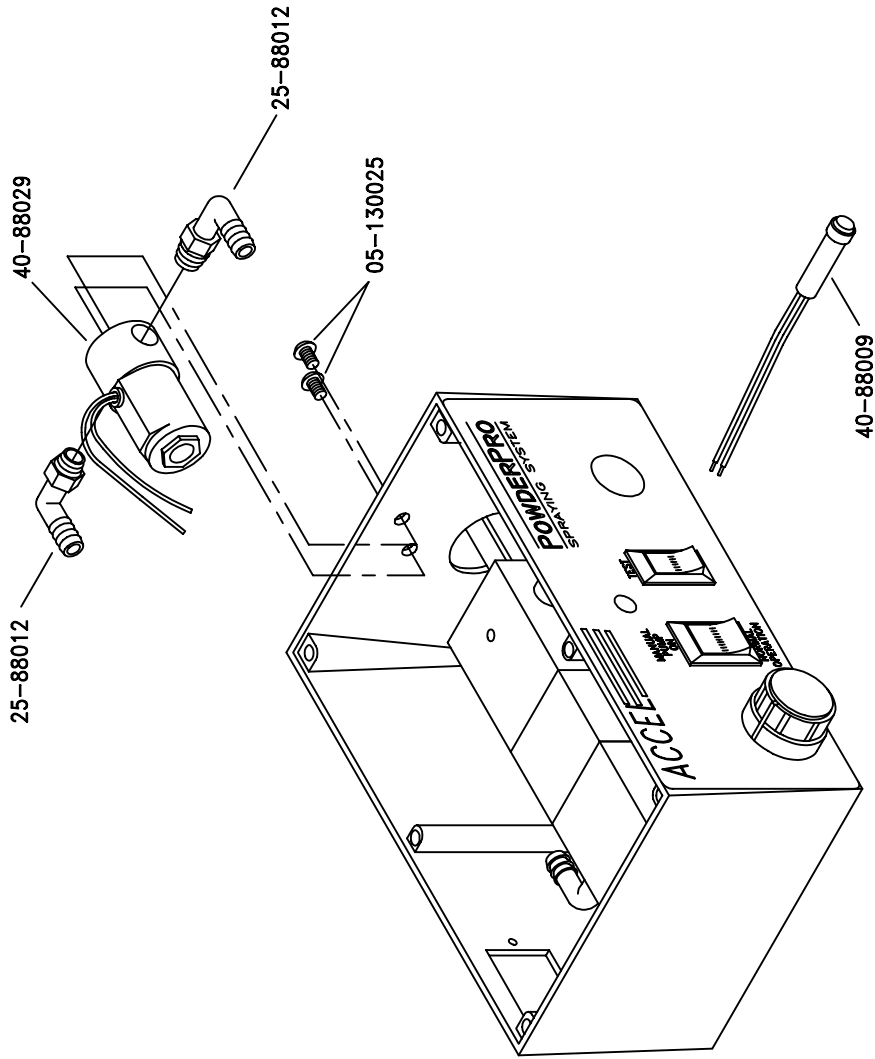


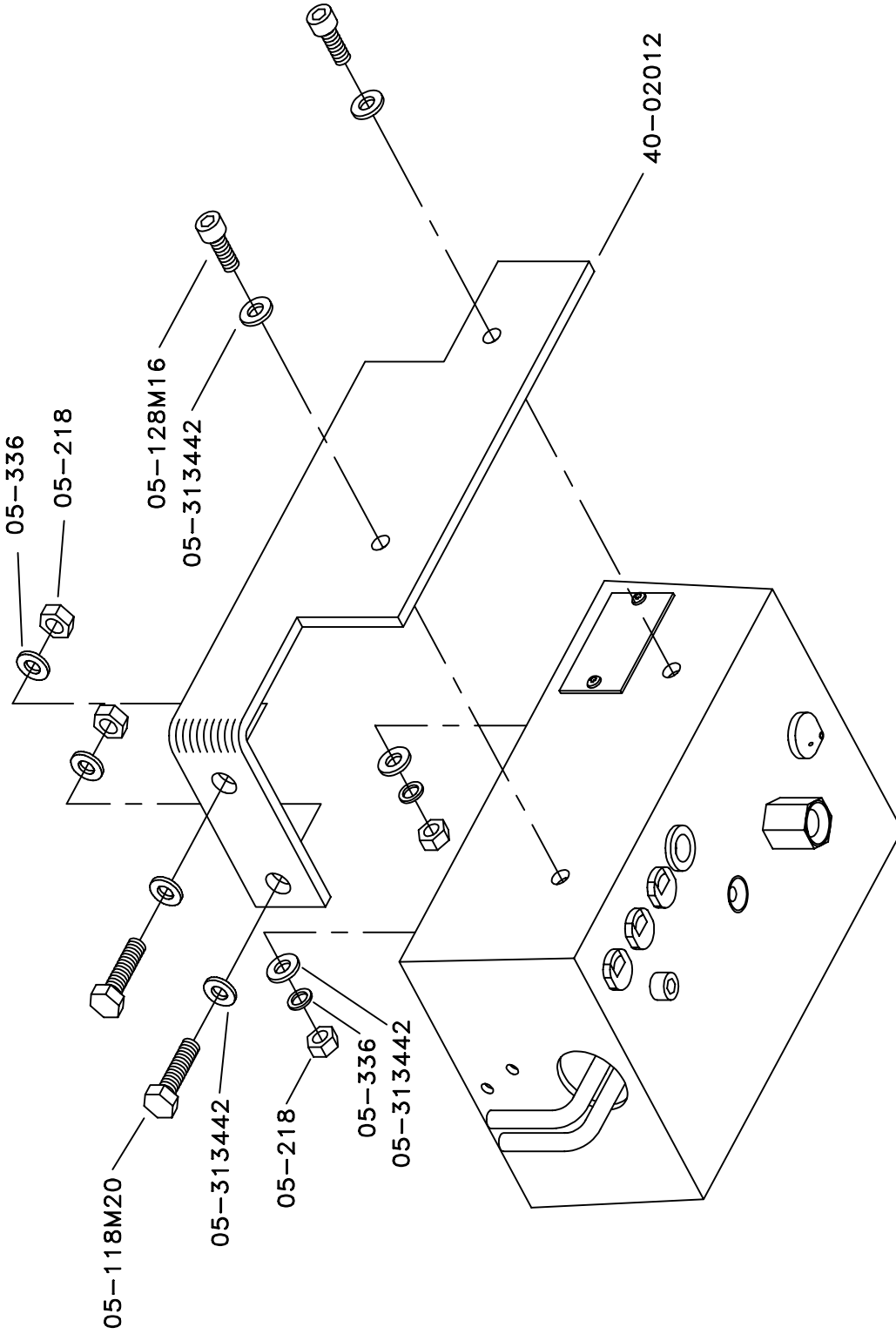
3200P25

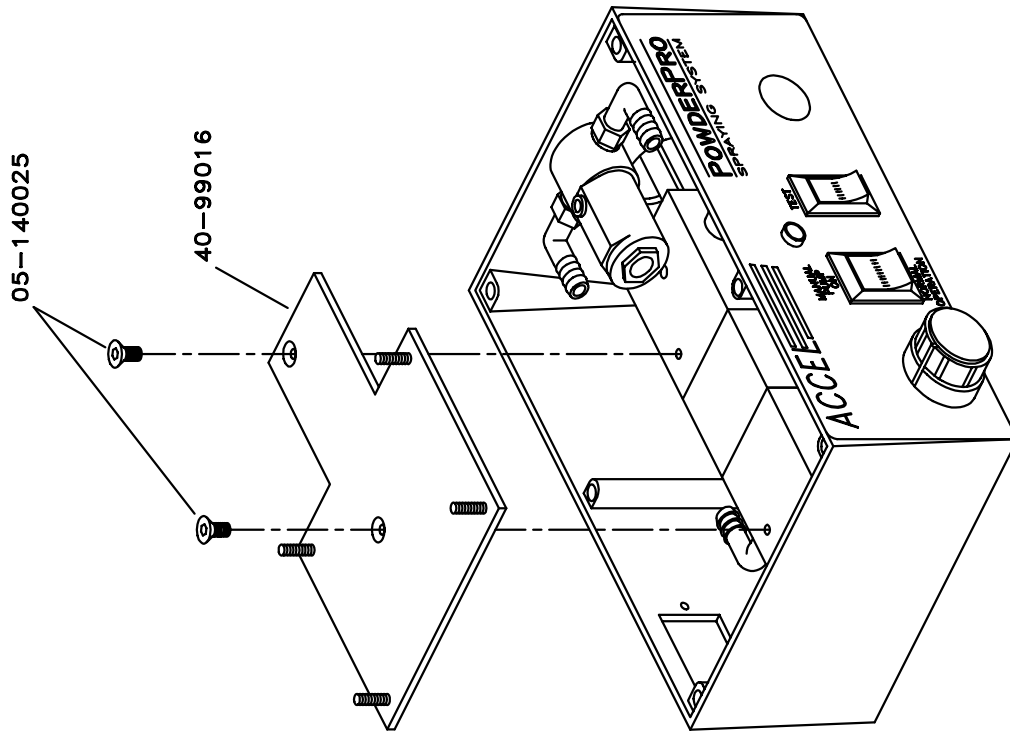


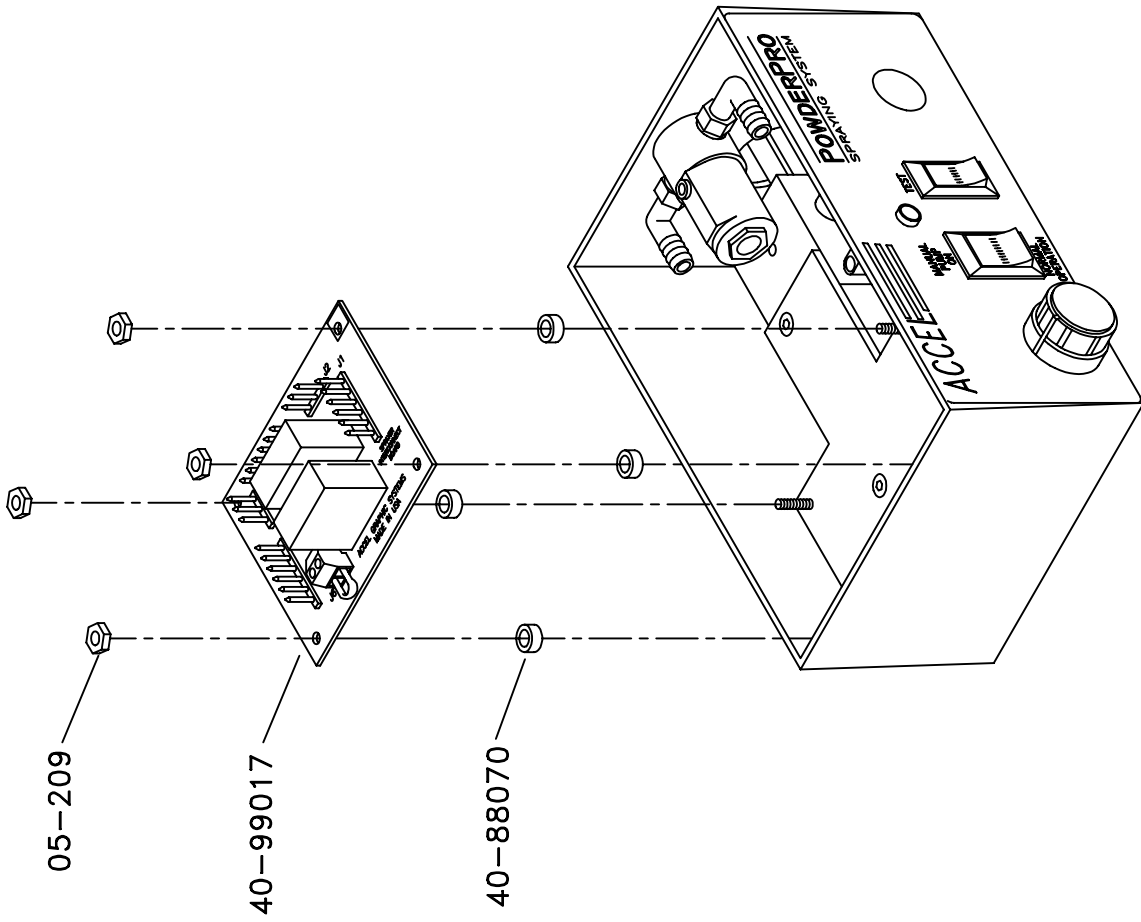
3200P09

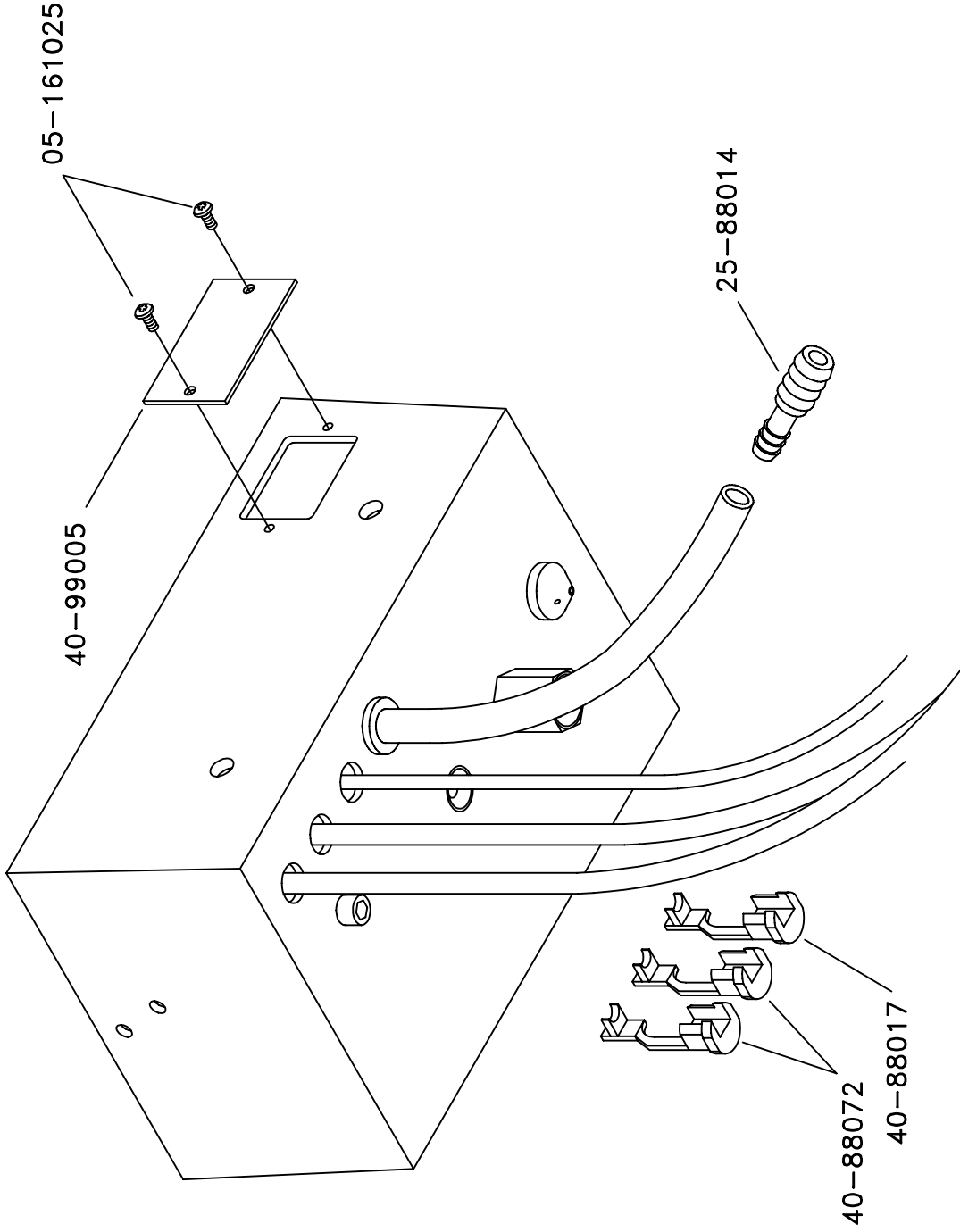


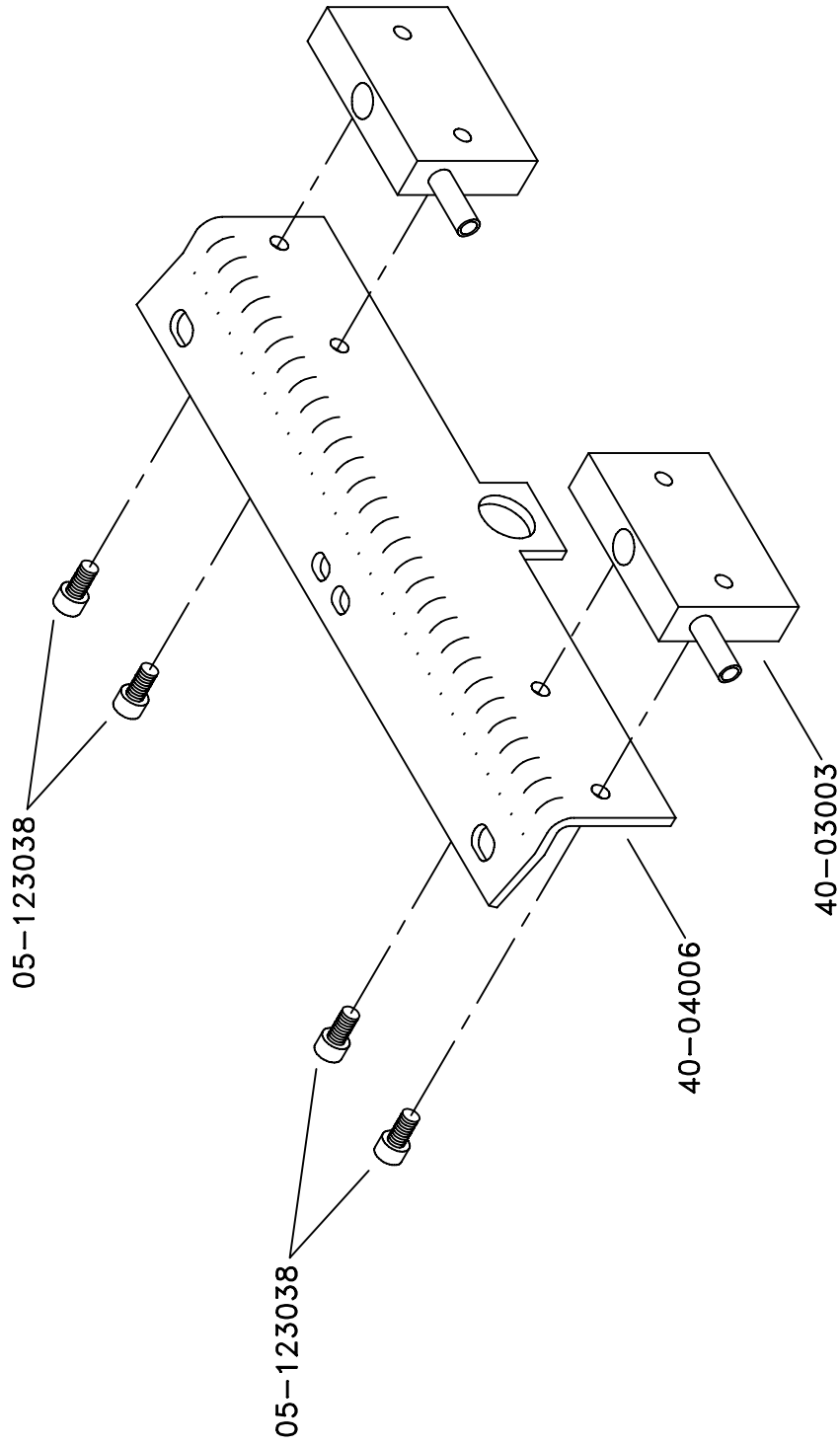


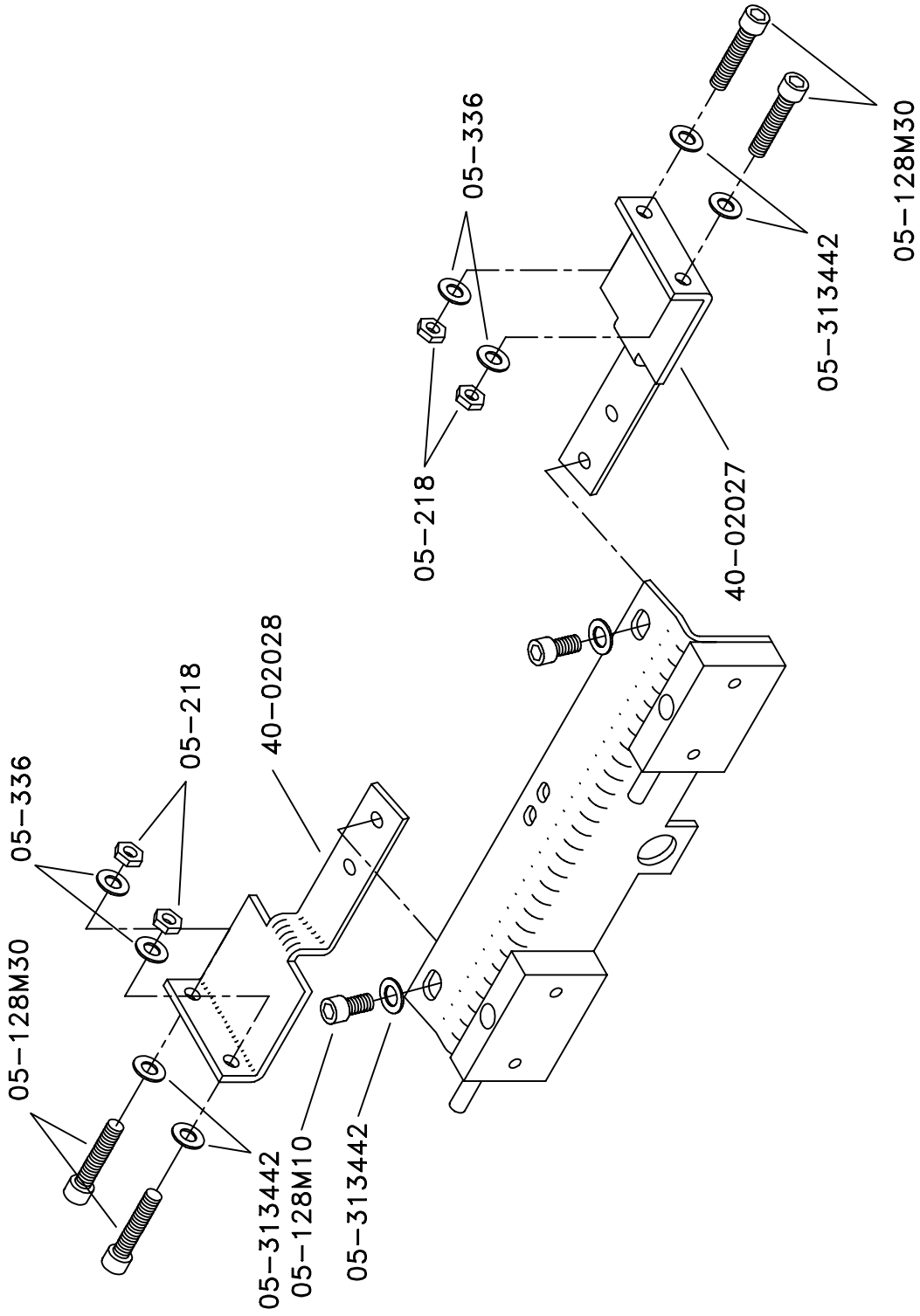


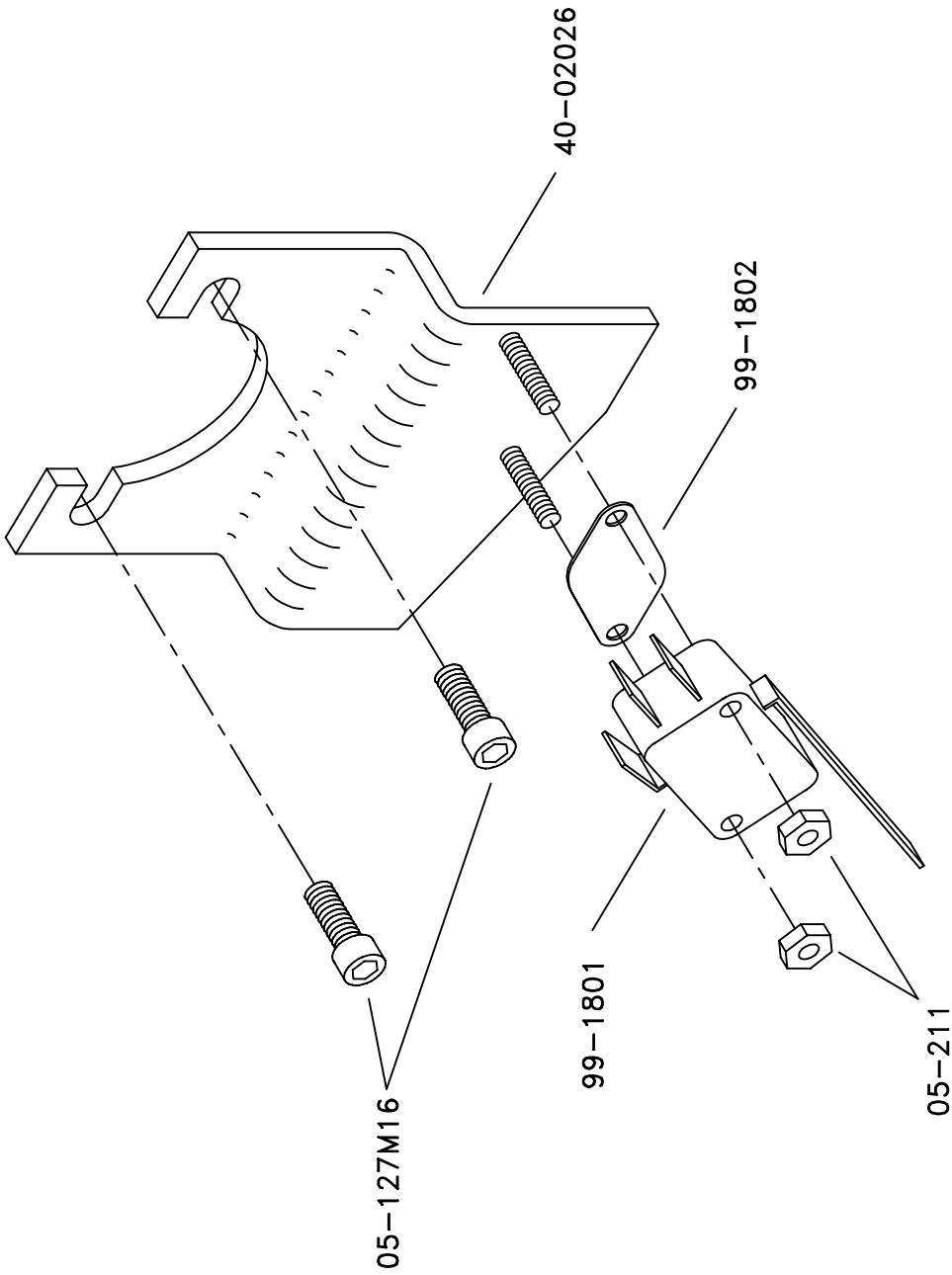


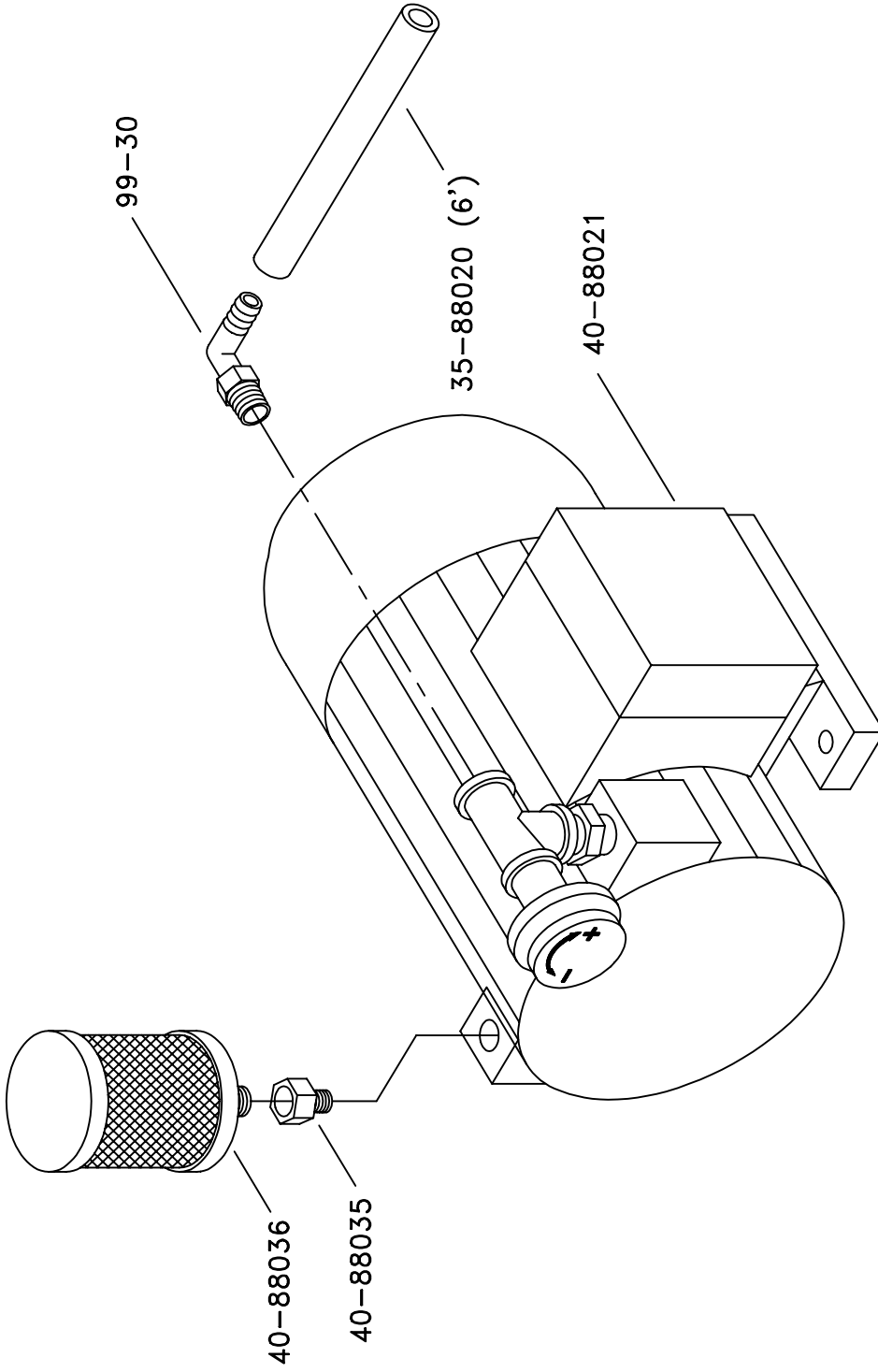




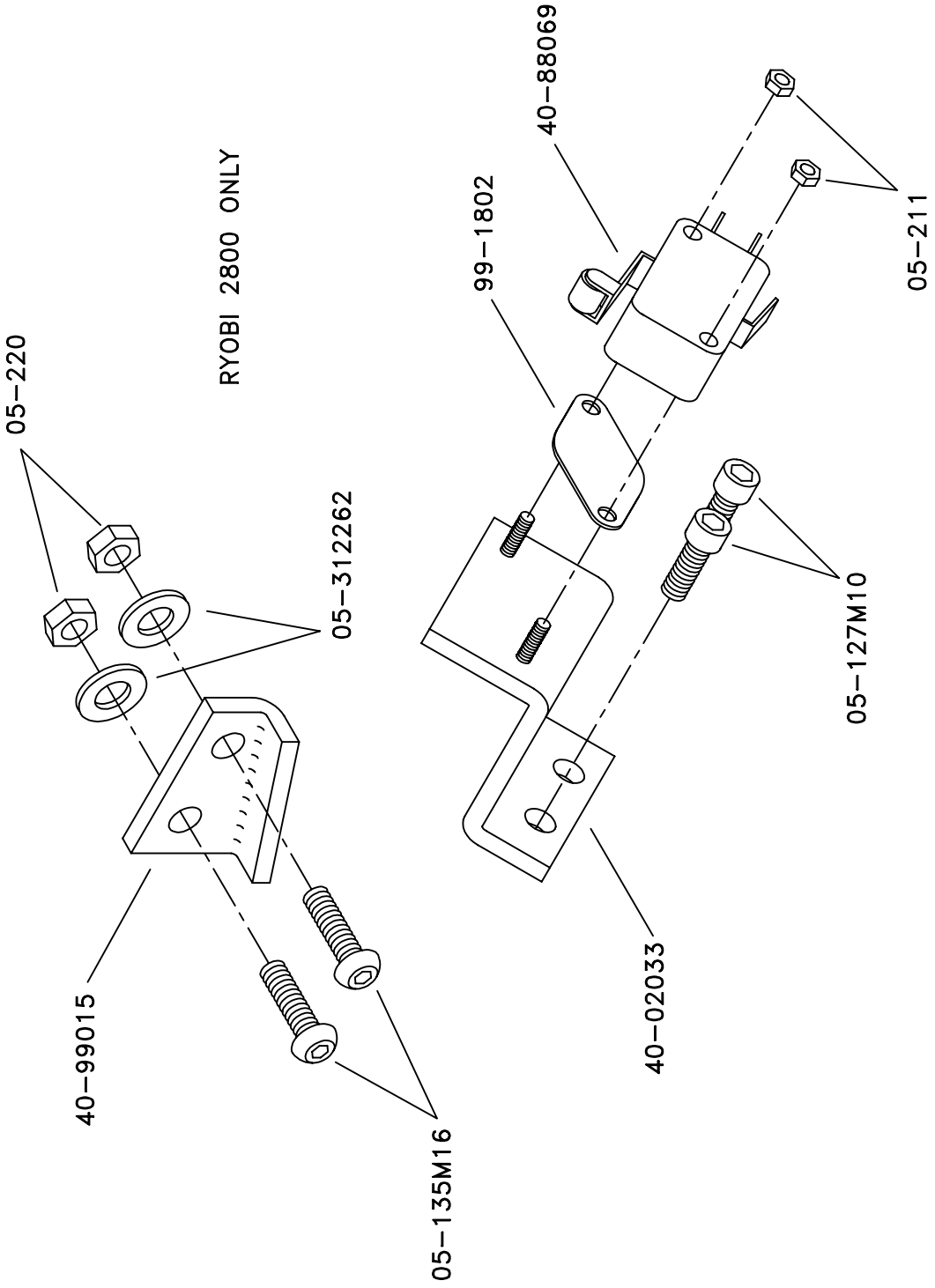


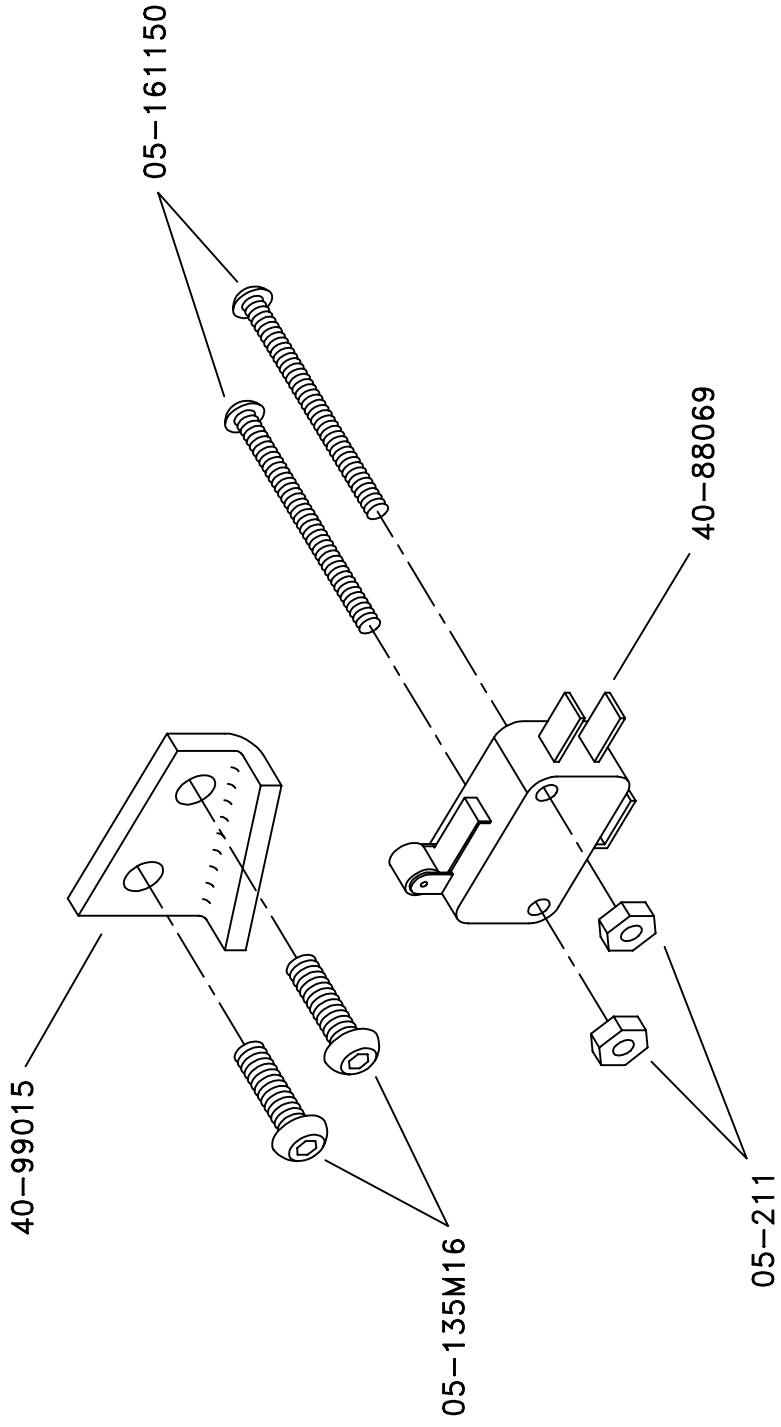






3200P36





RYOBI 3200 ONLY

3200P17





**ACCEL**  <sup>®</sup>  
*Graphic Systems*

11103 Indian Trail, Dallas, TX 75229 Phone 972-484-6808, Fax 800-365-6510  
E-mail [accel@dallas.net](mailto:accel@dallas.net), Web Site [www.accelgraphicsystems.com](http://www.accelgraphicsystems.com)