

PowderPro[®] Sprayer

Installation Instructions

**Heidelberg GTO
Single Color Presses Only**

ACCEL  [®]
Graphic Systems

GENERAL INFORMATION

**ATTENTION
POWDERPRO®
OWNER!**

Accel Graphic Systems provides parts and service through its authorized distributors and dealers. Therefore, all requests for parts and service should be directed to your local dealer.

The philosophy of Accel Graphic Systems is to continually improve all of its products. Written notices of changes and improvements are sent to Accel Graphic Systems' Dealers.

If the operating characteristics or the appearance of your product differs from those described in this manual, please contact your local Accel Graphic Systems Dealer for updated information and assistance.

Always update your equipment when improvements are made available, especially those related to safety.

YOUR AUTHORIZED POWDERPRO® DEALER IS:

**THE SERIAL NUMBER OF YOUR
POWDERPRO® IS:**

For technical assistance, please contact:

ACCEL GRAPHIC SYSTEMS
11103 Indian Trail
Dallas, TX 75229
PHONE (972) 484-6808
FAX (800) 365-6510
E-MAIL accel@dallas.net
WEB SITE www.accelgraphicsystems.com

PowderPro® is covered by U.S. Patents Pending



INSTALLATION

1

Disconnect the electrical power to the press.

2

Remove the original powder spray hopper from the press. Leave the original spray nozzles and feed tube in place, they are used for blowing the sheet down.

3

Remove the NOPS press side cover.

5

Diagram A

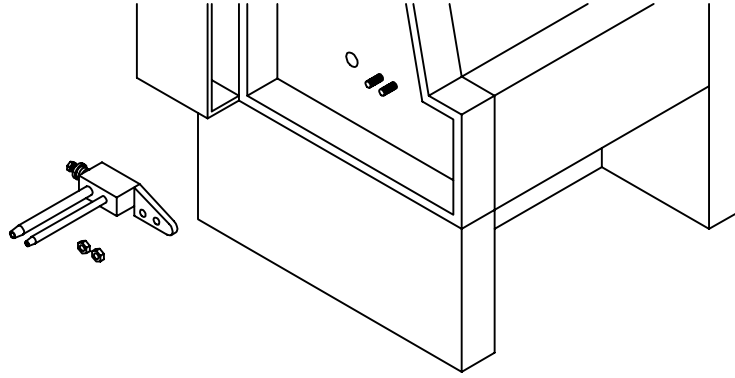


Diagram B

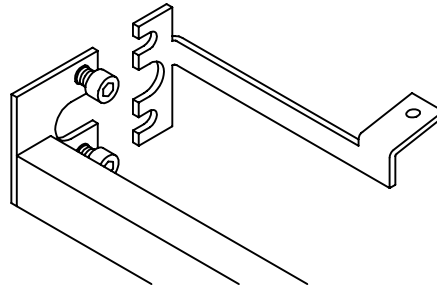
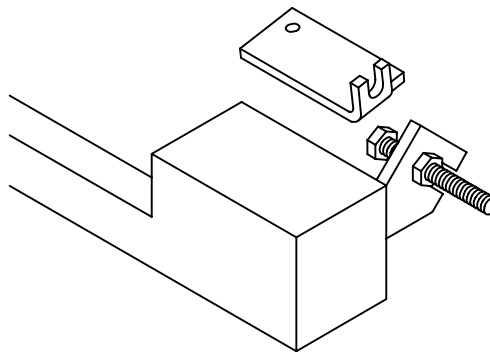


Diagram C



INSTALLATION

4

Remove original spray valve as shown in Diagram A.

If the press is equipped with an IR dryer skip to step 7.

5

Loosen the two M8 bolts that secure the delivery light to the NOPS press frame. Back the bolts out at least 1/8". Install the PowderPro® NOPS mounting bracket as shown in Diagram B and tighten the bolts.

6

Loosen the lock nuts securing the delivery light to the long M8 bolt on the OPS. Back the bolt out of the press frame at least 1/8". Install the PowderPro® OPS mounting bracket between the head of the bolt and the light bracket as shown in Diagram C. Tighten the bolt up enough so that the head of the bolt is contacting the PowderPro® bracket. Rotate the bracket so that it matches the angle of the NOPS bracket before tightening the lock nuts.

Skip to step 9.

7

Diagram D

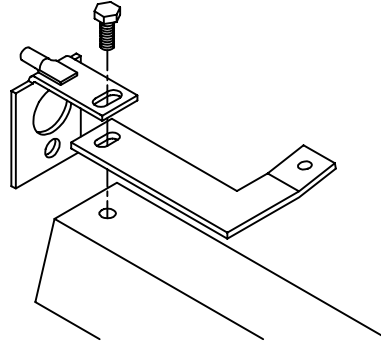


Diagram E

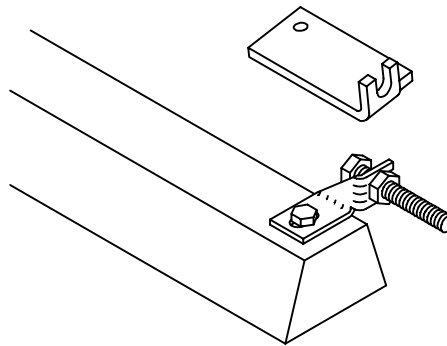
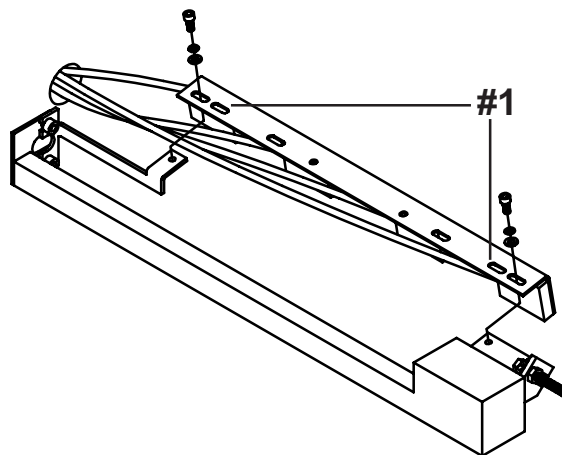


Diagram F



INSTALLATION

7

Support the IR unit and remove the bolt on the NOPS that secures the dryer to its mounting bracket. Using the supplied longer bolt, install the PowderPro® NOPS mounting bracket as shown in Diagram D.

8

Loosen the lock nuts securing the IR unit to the long M8 bolt on the OPS. Back the bolt out of the press frame at least 1/8". Install the PowderPro® OPS mounting bracket between the head of the bolt and the IR mounting bracket as shown in Diagram E. Tighten the bolt enough so that the head of the bolt is contacting the PowderPro® bracket. Rotate the bracket so that it matched the angle of the NOPS bracket before tightening the lock nuts.

9

Attach the spray bar to the mounting brackets as shown in Diagram F. Route the hoses through the hole in the NOPS press frame near where the light fixture (or IR unit if so equipped) is attached.

If the press is a GTO 46, use the slots #1 in Diagram F for mounting the spray bar.

9

Diagram G

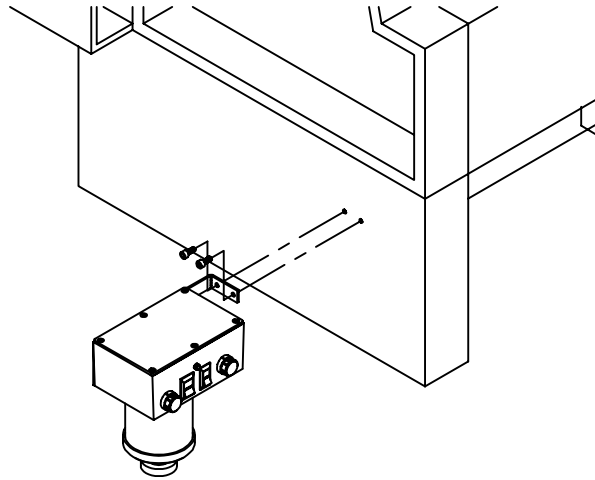


Diagram H

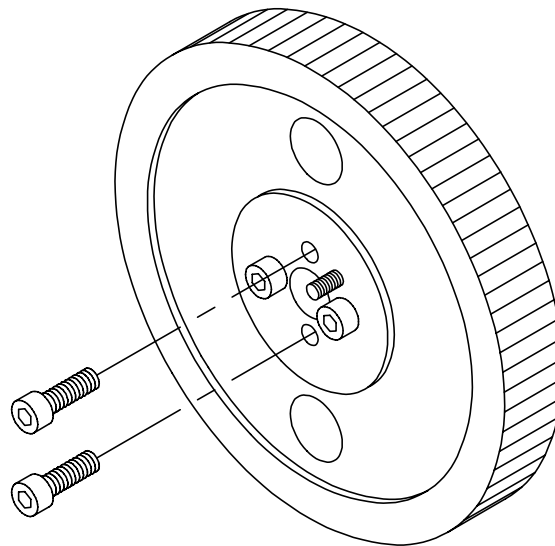
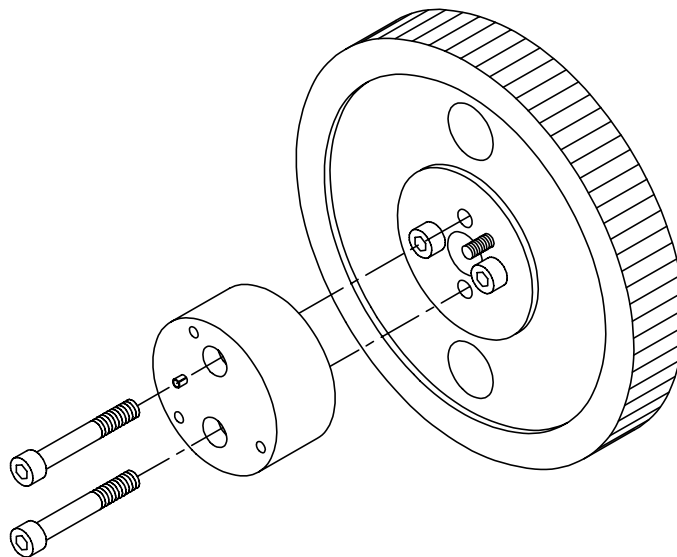


Diagram I



INSTALLATION

10

Use the provided hardware to secure the control box to the existing holes in the NOPS press frame as shown in Diagram G.

The control box may be mounted in a higher position by mounting it the NOPS press side cover. Use the control box mounting bracket as a template to mark the hole locations before drilling two 11/32" dia holes. Before drilling make sure that all of the cables and hoses will reach the control box in the mounted position. Extra hardware has been provided for side cover mounting.

11

Locate the blanket gear on the NOPS. Note the threaded stud coming through the gear between two of the gear mounting bolts. Using Diagram H as a guide, remove two of the four mounting bolts.

12

Using the provided longer M8 bolts secure the cam mounting block to the hub of the gear as shown in Diagram I. The block only goes on one way, the threaded stud lines up with a hole in the block.

11

Diagram J

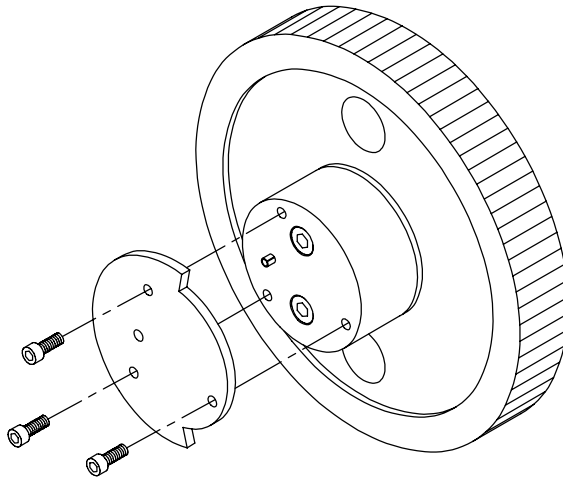


Diagram K

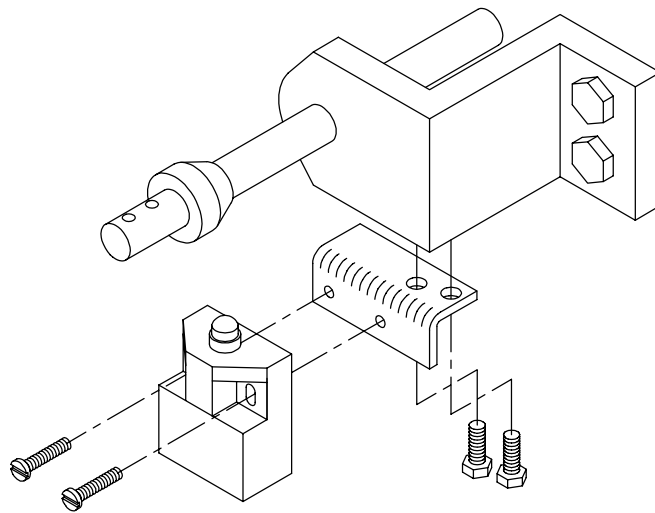
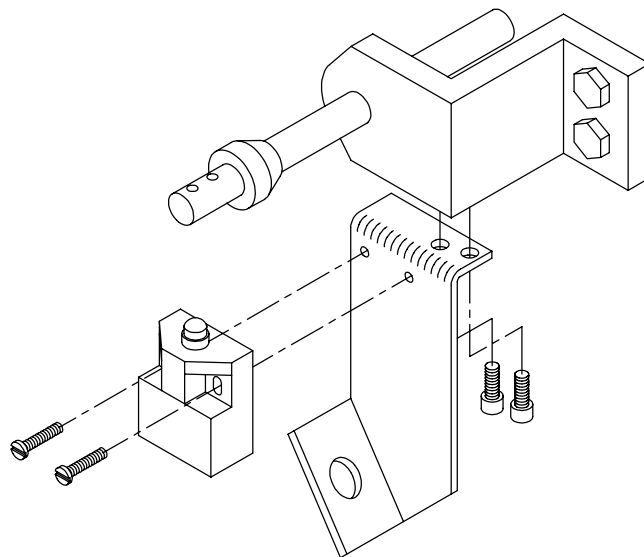


Diagram L



INSTALLATION

13

Using the provided hardware attach the cam to the mounting block as shown in Diagram J. The roll pin in the mounting block prevents the cam from being installed in the wrong position.

14

Remove the hand crank safety switch from its mounting bracket as shown in Diagram K. Remove the mounting bracket from the casting which supports the hand crank shaft.

15

Using the provided hardware install the replacement bracket as shown in the Diagram L. Reattach the safety switch to the new bracket. Briefly restore the electrical power to the press and adjust the switch for proper function before tightening the screws. After adjusting, disconnect power to the press.

Diagram M

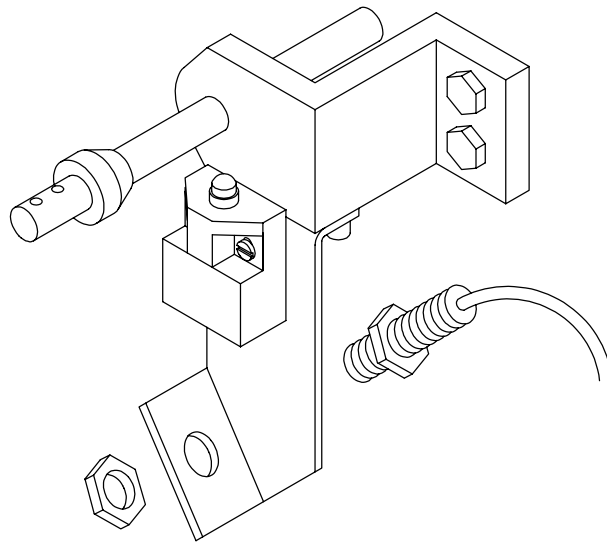


Diagram N

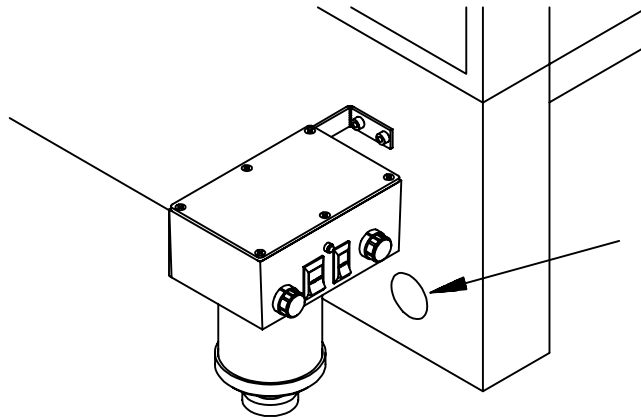
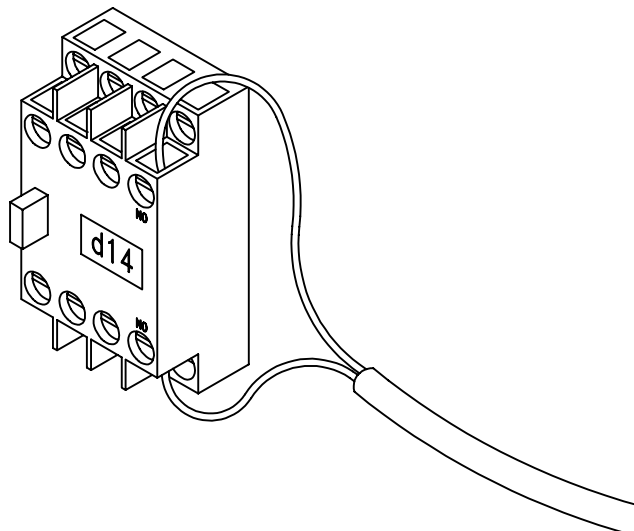


Diagram O



INSTALLATION

16

Install the proximity sensor in the mounting bracket as shown in Diagram M. With the blanket to impression cylinder pressure adjusted all of the way out (–), adjust the proximity sensor so that it is .030" - .060" from the cam. Route the sensor cable along with the switch cable down toward the delivery. Use the provided tie-wraps to secure the cable to the switch cable. The cable eventually goes through a hole in the press side cover near where the delivery jam sensor switch is located.

17

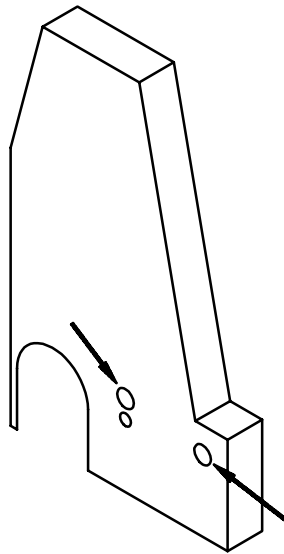
Remove the cover from the electrical cabinet on the OPS. Locate an empty access hole in the back panel of the cabinet. Uncoil the provided black steel wire. Insert the hooked end of the wire through one of the empty access holes in the back of electrical cabinet. Route the wire through the press and out of the round hole in the frame (Diagram N, Arrow) directly under the PowderPro® control box. If the hole shown in the diagram does not exist, any other hole or under the press will suffice. Hook the wire onto the tie-wrap on the end of the provided cable assembly that has blue tape on one end. Pull the wire with the cable attached back through the press and into the electrical cabinet. Once in the cabinet the tie-wraps on the end of the cable can be removed.

18

Route the cable, installed in the previous step, to the D14 press relay. Insert the ends of the cable into the relay as shown in diagram O. Make sure that the contacts used on the D14 relay are normally open and are not being used by other wires.

15

Diagram P



INSTALLATION

19

Insert the hoses coming from the spray bar through the hole (Diagram P, Left Arrow) in the NOPS side cover. Insert the cable coming from the proximity sensor through the hole in the cover near the delivery end (Diagram P, Right Arrow). Make sure that the cable and hoses are secured away from any moving parts before replacing the side cover on the press.

20

Set the provided pump on the floor behind the PowderPro® control box and connect the pump cable to the control box.

21

Connect the hose coming from the Powder Pro control box to the barbed hose fitting on the pump.

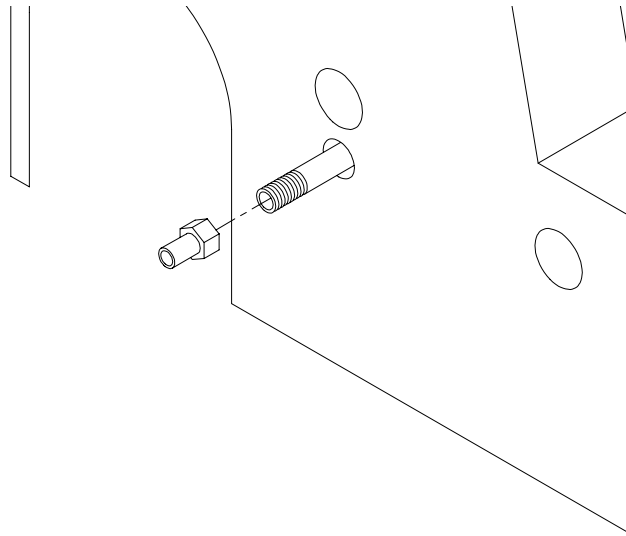
Connect the PowderPro® hoses coming through the side cover to the tubes coming out the end of the PowderPro® control box. Make sure that the hoses with the black tape on the end are inserted on the lower tubes or the ones closest to the press.

Connect the cables coming from the D14 relay and the proximity sensor to the appropriate connector coming out of the control box.

Plug the power cord into a standard 115V wall circuit.

17

Diagram Q



INSTALLATION

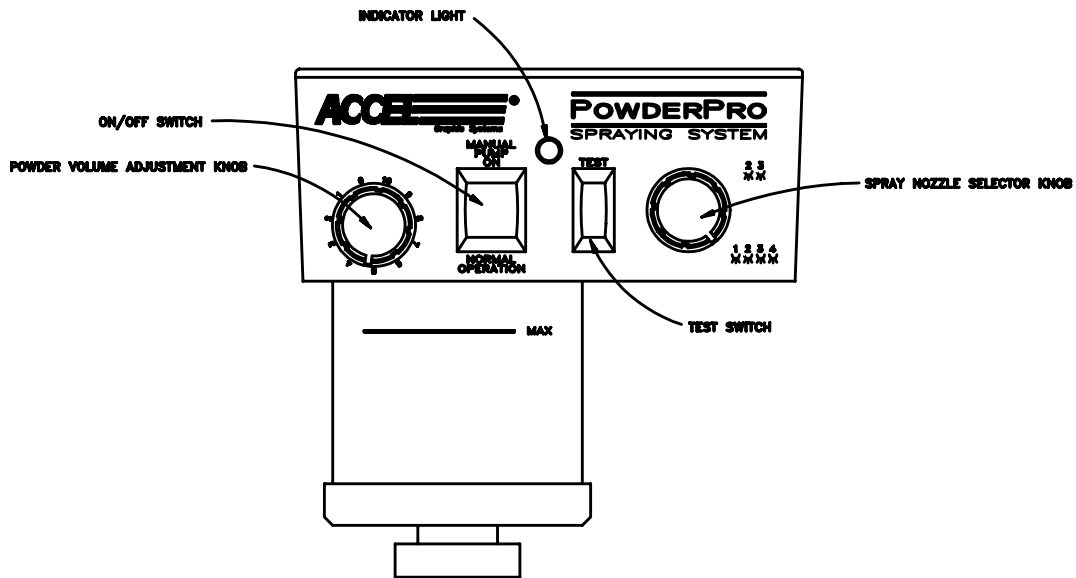
22

NOTE: This step is for non IR dryer equipped presses only.

Attach the supplied hose fitting to the threaded tube coming through the NOPS cover as shown in diagram Q. Attach the provided hose and valve to this fitting. Make sure that the small hole in the top of the valve is on the feed side (coming from the pump). This hole is needed to keep the press from detecting a feeder jam when the valve is closed.

Use the provided splice barb fitting to connect this hose to the original powder sprayer feed hose.

OPERATION & MAINTENANCE



POWDER PRO CONTROLS

VOLUME ADJUSTMENT KNOB

Adjusts the amount of spray powder with "0" the minimum and "10" the maximum.

ON/OFF SWITCH

When switched to "Manual Pump On" the pump comes on for setting spray powder volume. When switched to the "Normal Operation" position, the system is armed and sprays only when the press goes on impression. Center position is off

INDICATOR LIGHT

This light is illuminated only when the unit is actually spraying. The light goes on and off as sheets pass under the spray nozzles.

TEST SWITCH

Use this switch for setting powder volume when not printing. With the "On/Off" switch set at "Manual Pump On", push the test switch to visually see the amount of powder being sprayed, adjust as desired with volume adjustment knob.

NOZZLE SELECTOR KNOB

This knob lets you control which spray nozzles are being used. For maximum width sheets set the selector to the lower position. This setting sprays all four nozzles. For narrow sheets (generally 11" wide or less) set the selector to the upper position. This setting sprays only the center two nozzles.

OPERATION & MAINTENANCE

PUMP ADJUSTMENT

Powder volume range is adjusted by the outlet pressure of the pump. Locate the adjustment knob on the pump near the outlet hose. Loosen the locking knob and turn the adjustment knob clockwise to increase the pressure for more powder. Turn the knob counter clockwise to decrease pressure for less powder. Set the correct pump pressure as follows:

1. Turn the pump on by switching the large switch on the PowderPro® control box to the "Manual Pump On" position.
2. Set the nozzle selector knob on the PowderPro® control box to "4".
3. Set the powder volume adjustment knob to "10".
4. Hold the "Test" switch "On" while looking at the spray nozzles in the delivery.
5. Have someone slowly adjust the pressure on the pump until the powder is barely visible. A powder setting of "10" with visible powder in the delivery is more than enough powder. Consequently, a setting of "5" results in no visible powder but sufficient powder for most jobs.

If powder is visible at the "5" setting than too much powder is being sprayed. Return to step 3 and reset the pump.

6. Tighten the locking knob on the pump adjustment.

INITIAL SETTINGS

The initial setting for the powder volume adjustment on an average job is "5". If more powder is required than is available at a setting of "10" you need to adjust the pump. If less powder is required than is available at a setting of "0" you also have to adjust the pump. So that you have a wide range of powder volume adjustment available for different jobs you want your "normal" setting for average jobs to be somewhere in the range from "4" to "6", otherwise you need to adjust the pump.

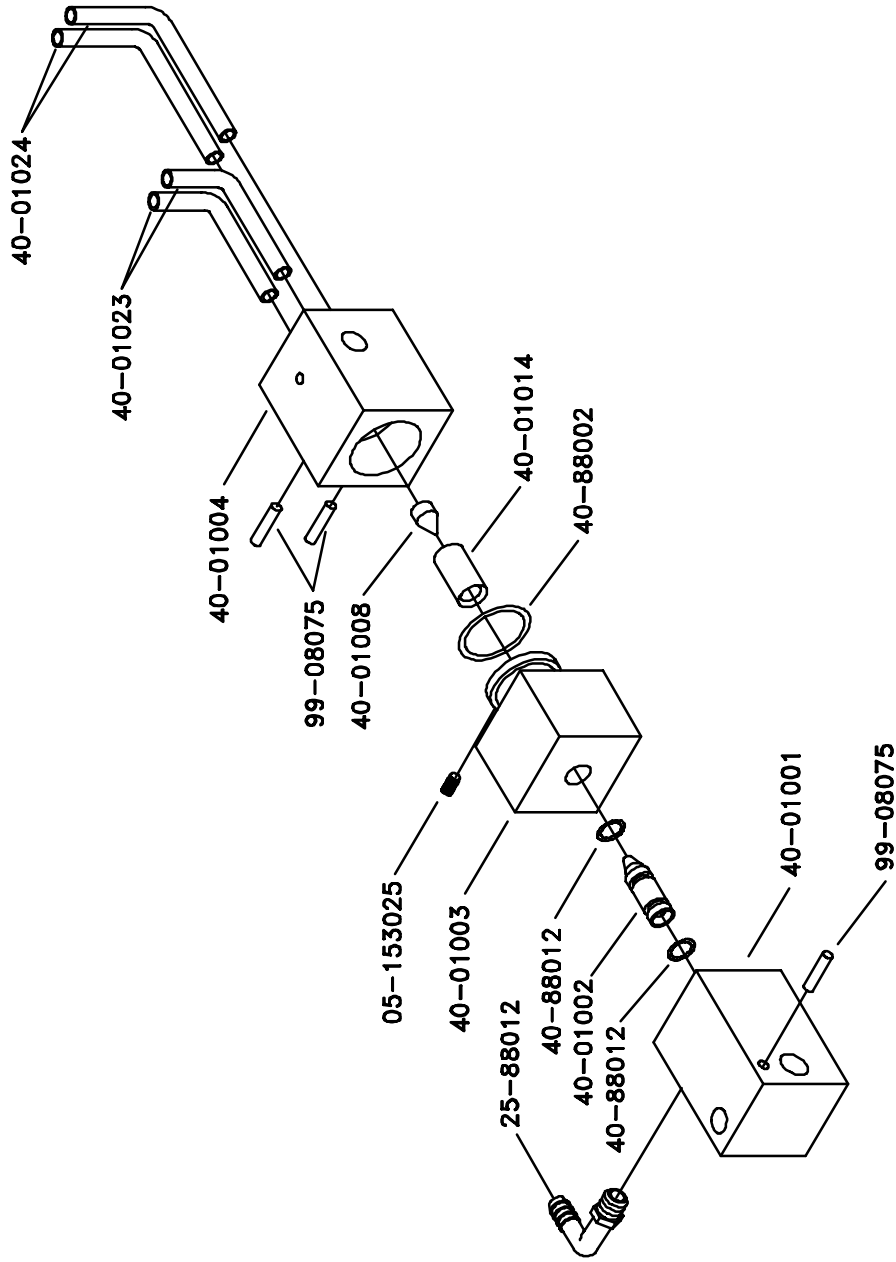
OPERATION & MAINTENANCE

MAINTENANCE

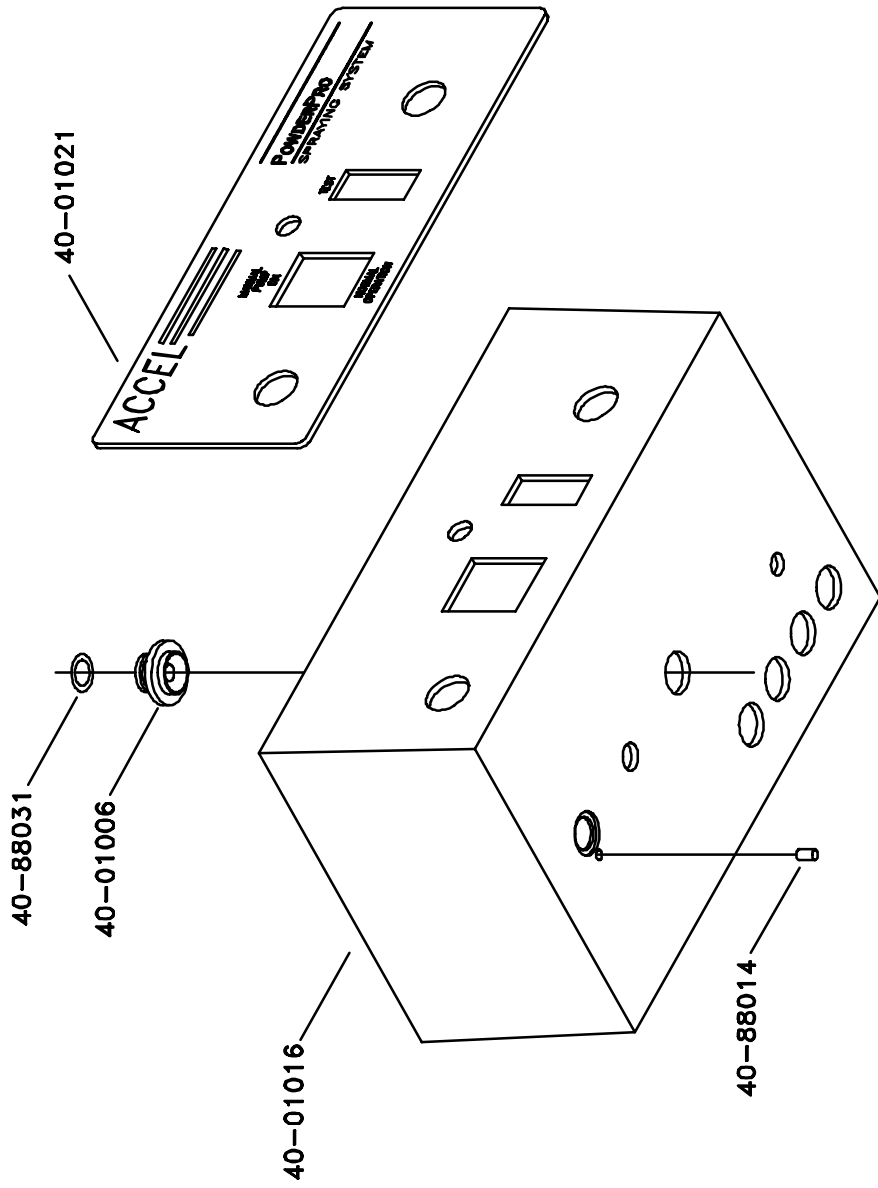
1. Clean the filter on the pump once a week, blowing it clean with compressed air.
2. Remove powder that may accumulate on the bottom of the spray nozzles daily.
3. Never use solvents containing oil when cleaning any part of the sprayer.
4. Use compressed air only if your compressor is equipped with a proper in-line dryer. Otherwise, use canned air. Moisture in the sprayer affects its performance.

OPERATION

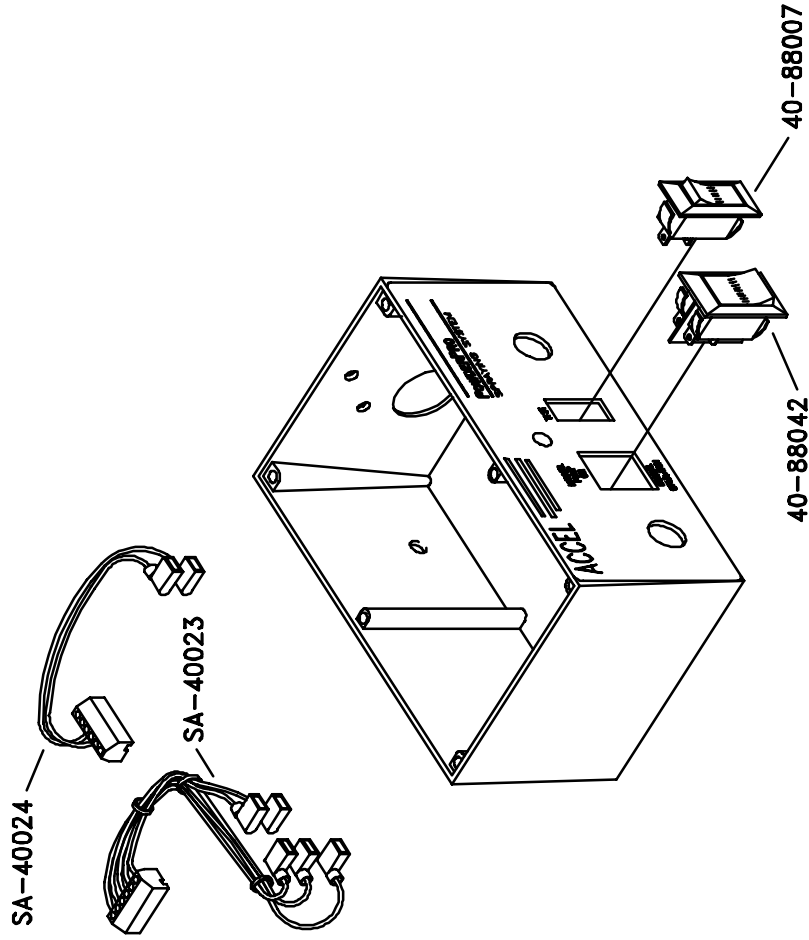
1. Fill the powder hopper with an intermediate grain (20-25) powder (available from Accel) up to the "MAX" line on the hopper.
2. Place the On\Off switch to the "Normal Operation" position.
3. Consider the sheet width and if necessary change the spray nozzle selector knob. When switching from four to two nozzles reduce the total amount of powder being sprayed by turning the powder volume adjustment knob to a lower number.
4. The spray length is automatically controlled by the press.
5. Adjust the powder volume adjustment knob if necessary.
6. The sprayer operates automatically when the press goes on impression and a sheet is present under the spray nozzles



GTO1CP01, 7-21-98

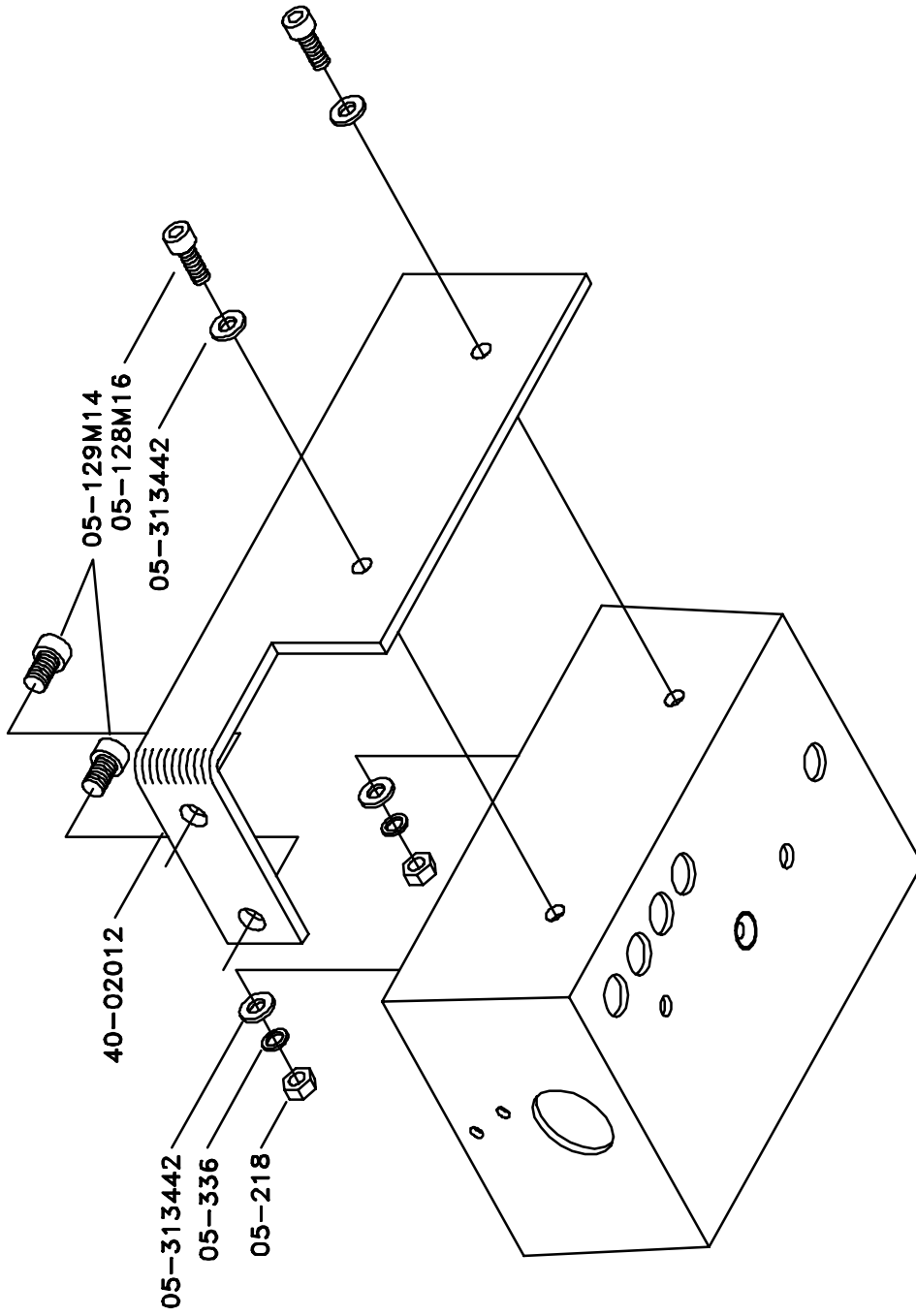


GTO1CP02, 7-24-98

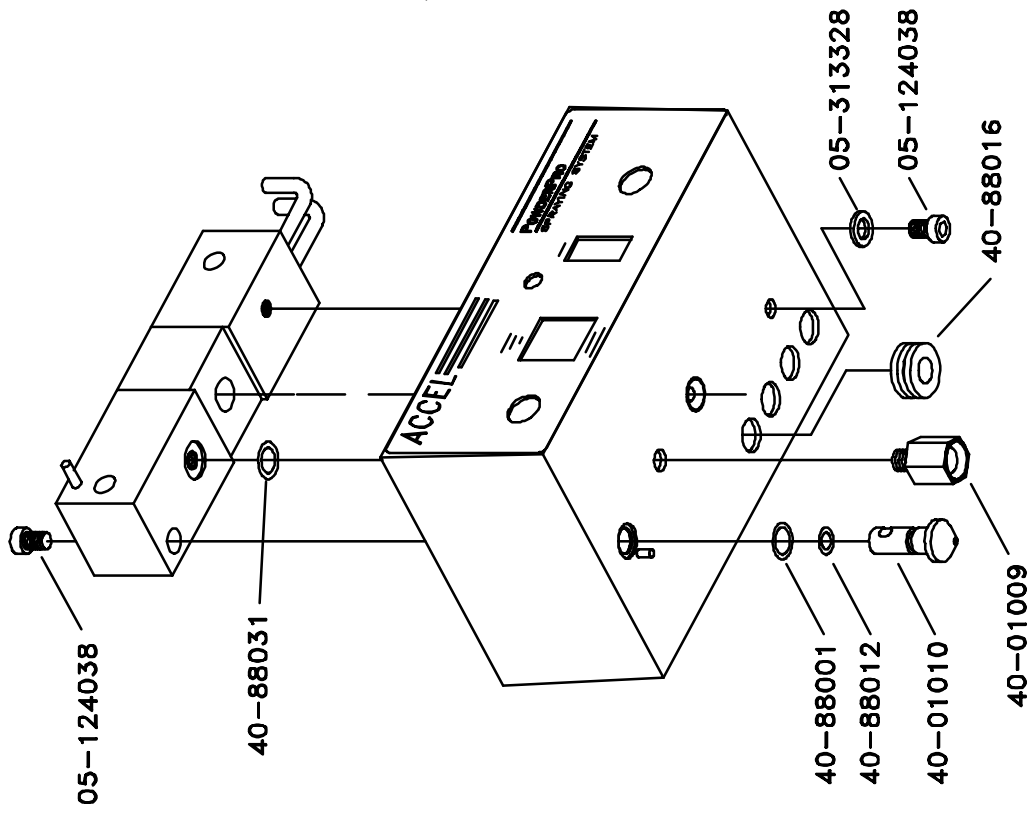


WIRE COLOR	SWITCH POSITION NO.
RED	12
ORANGE	11
BLUE	13
WHITE	24
BLACK	26

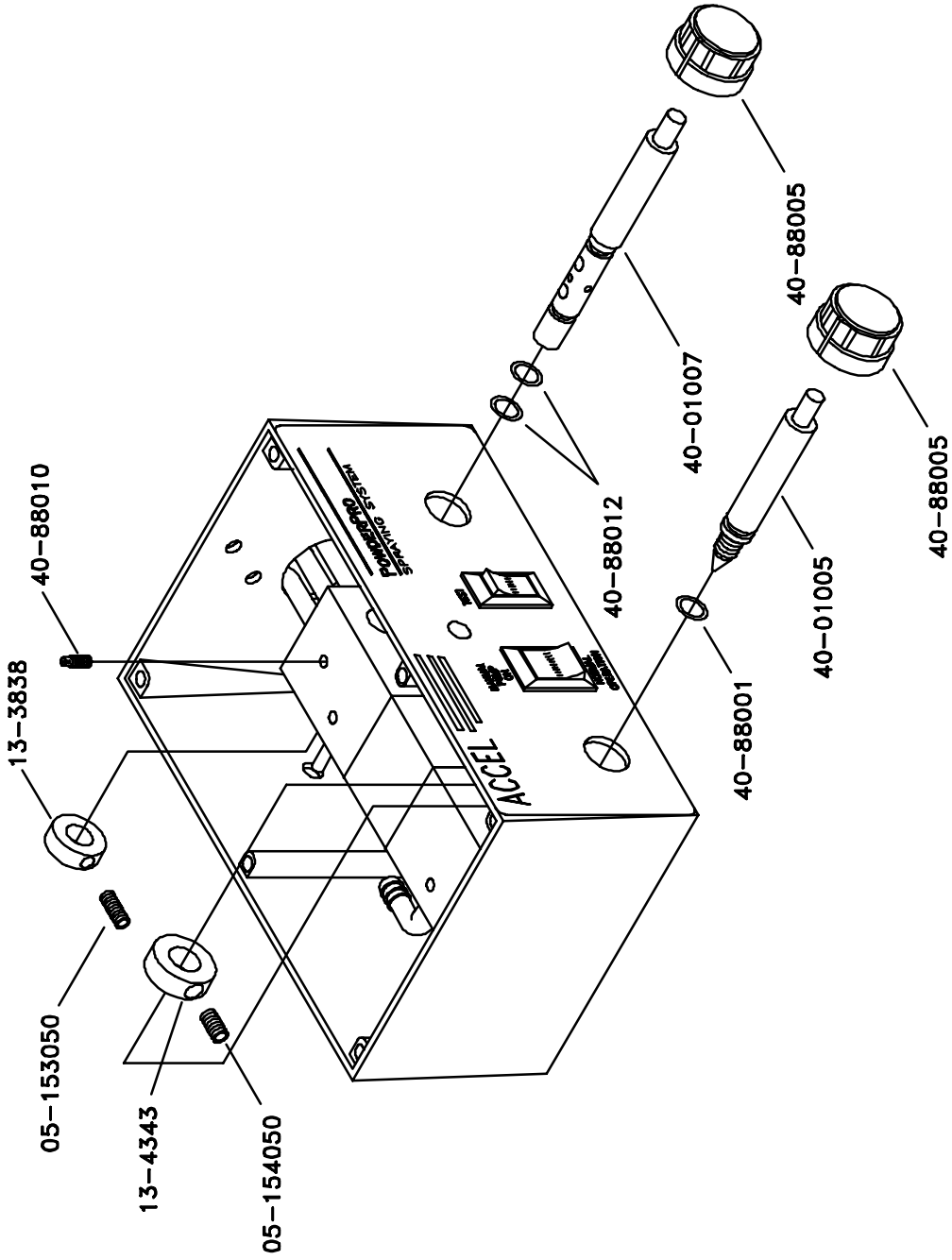
GT01CP03, 7-24-98



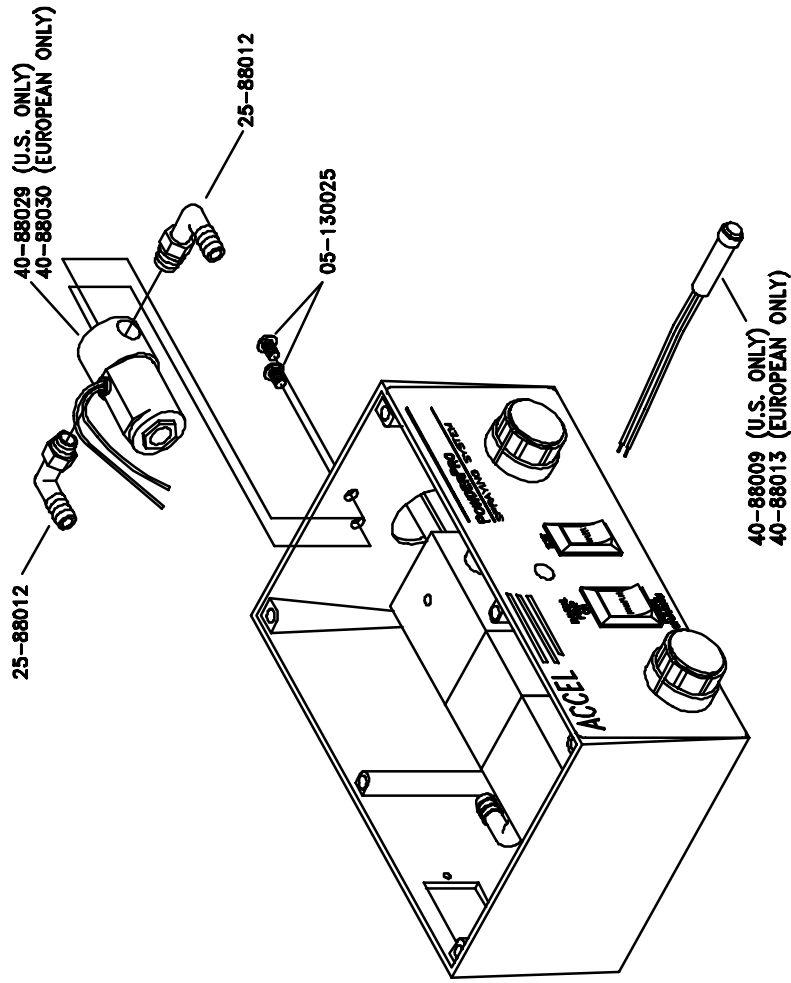
GTO1CP04, 7-21-98



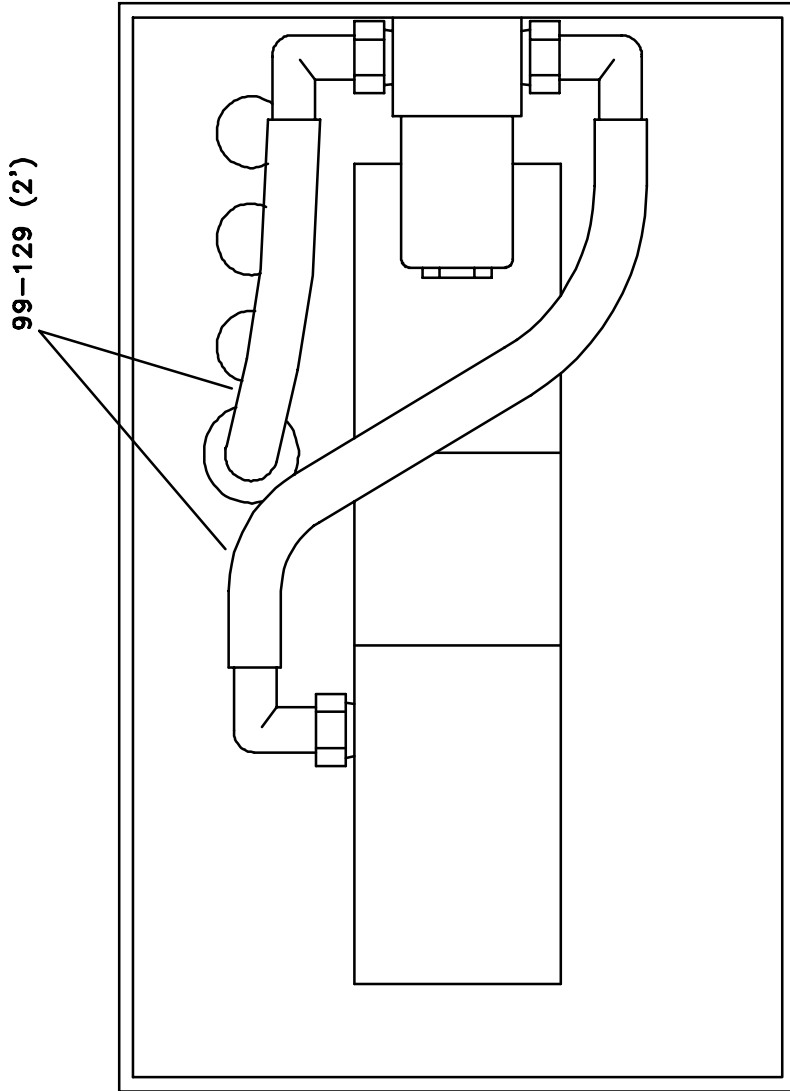
GT01CP05, 7-21-98



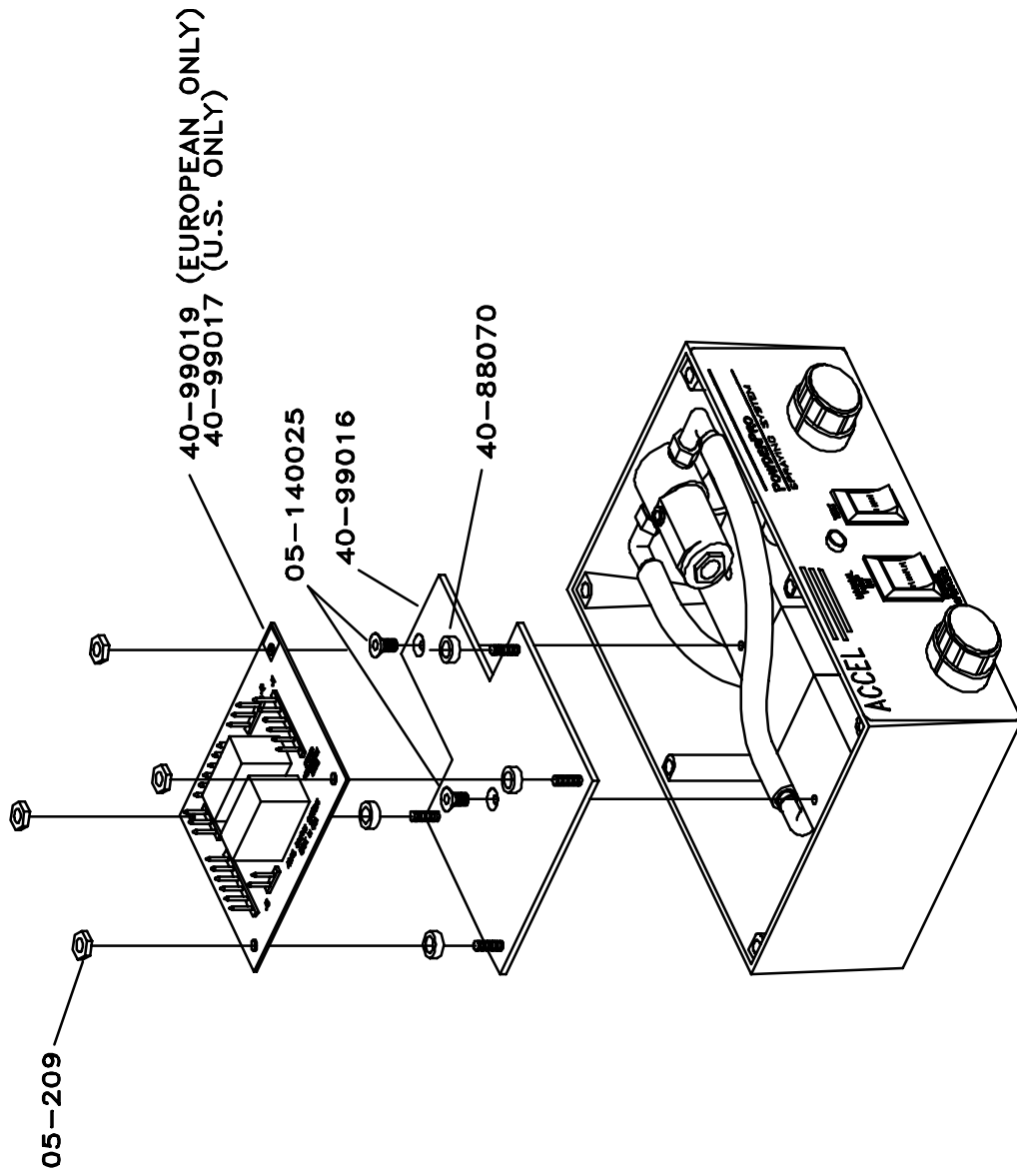
GT01CP06, 7-21-98



GT01CF07, 7-21-98



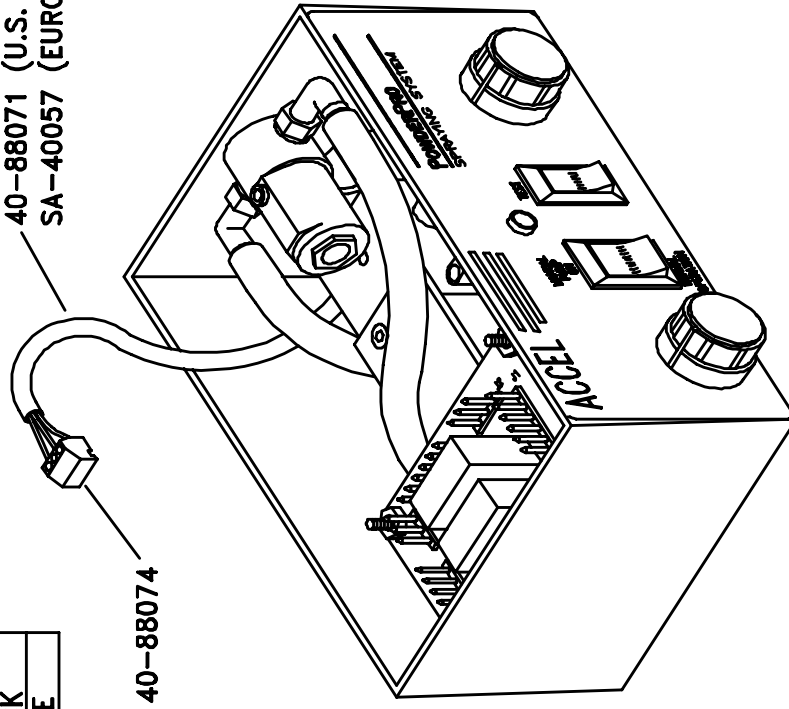
GT01CF08, 7-21-98



GT01CP09, 7-21-98

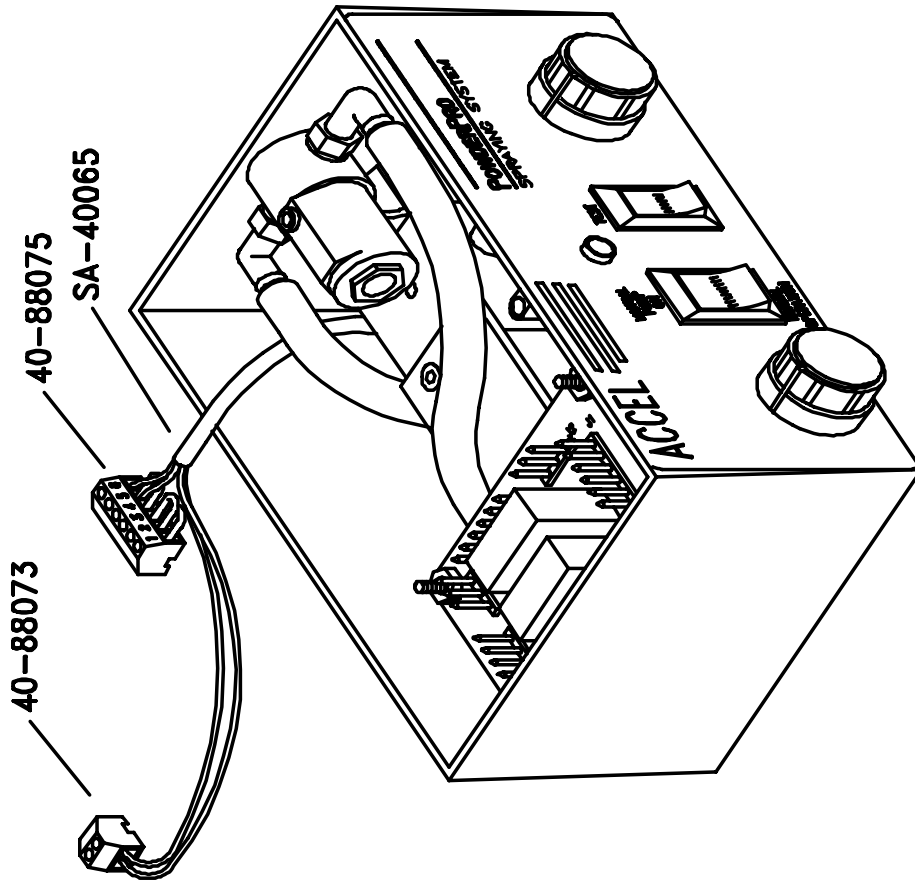
3 POSITION CONNECTOR	
POSITION NO.	WIRE COLOR
1	GREEN
2	BLACK
3	WHITE

40-88071 (U.S. ONLY)
SA-40057 (EUROPEAN ONLY)

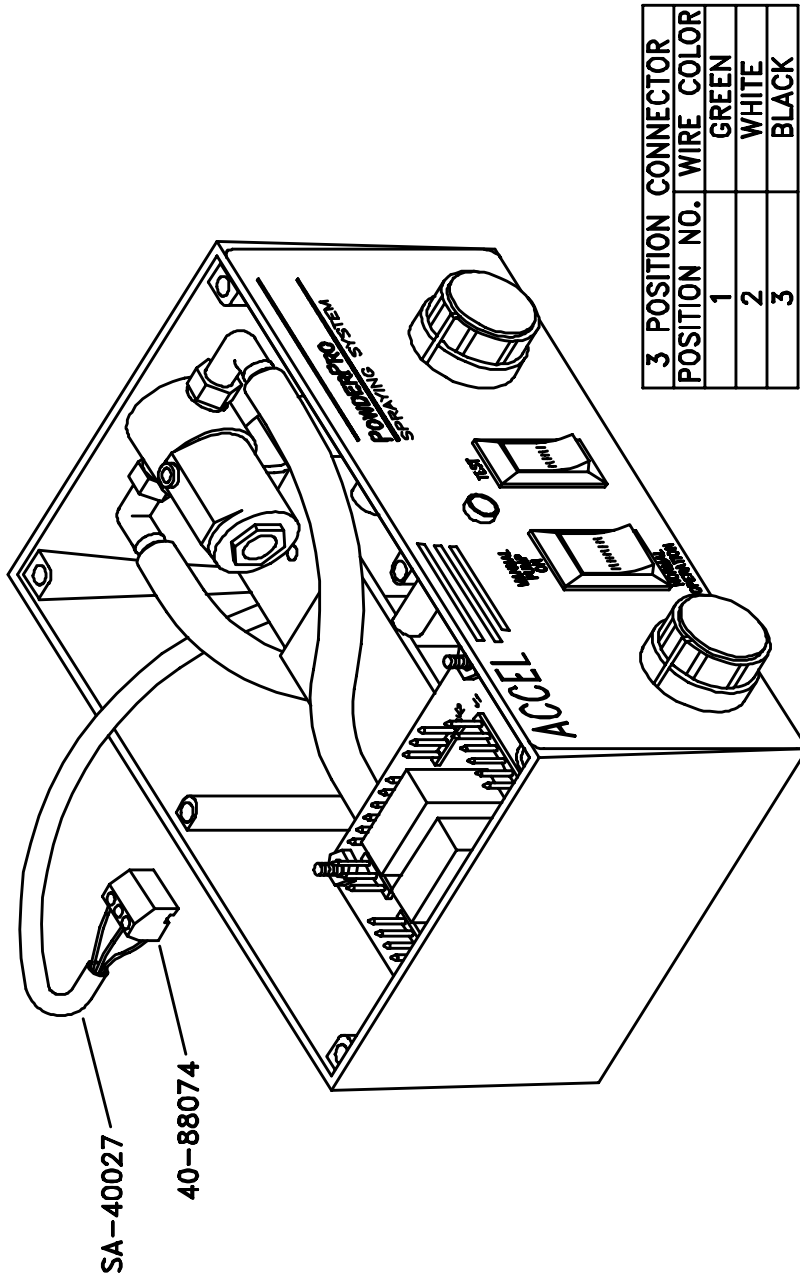


40-88074

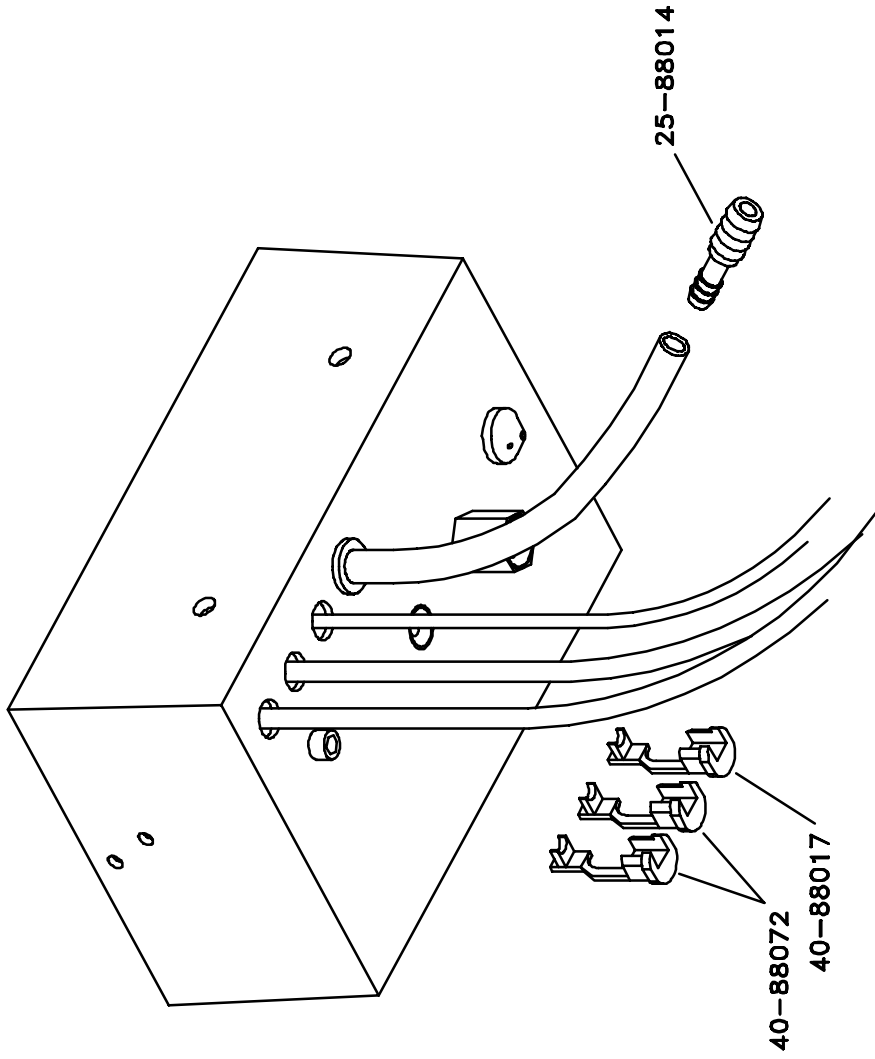
GT01CP10, 7-21-98

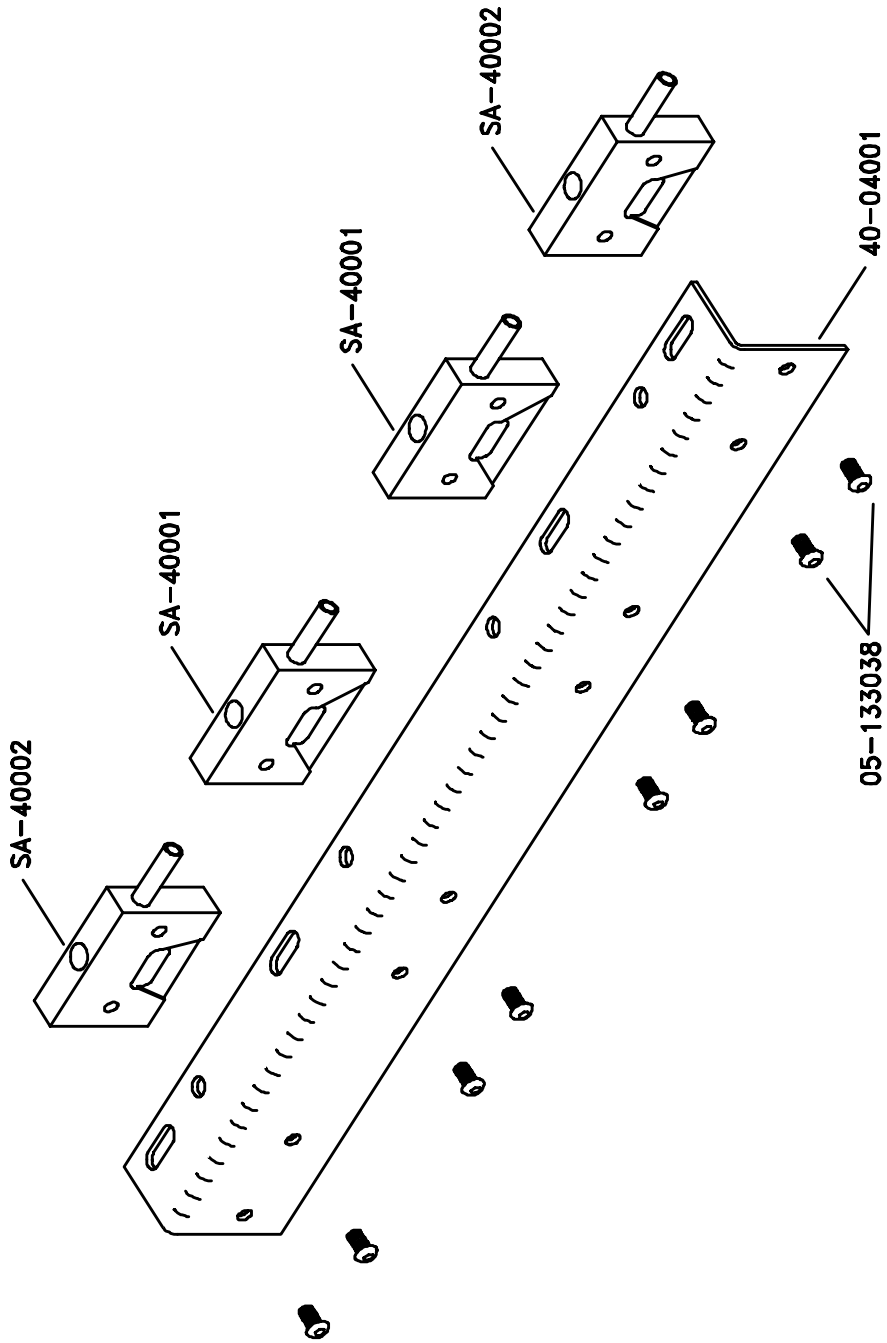


GT01CP11, 7-21-98

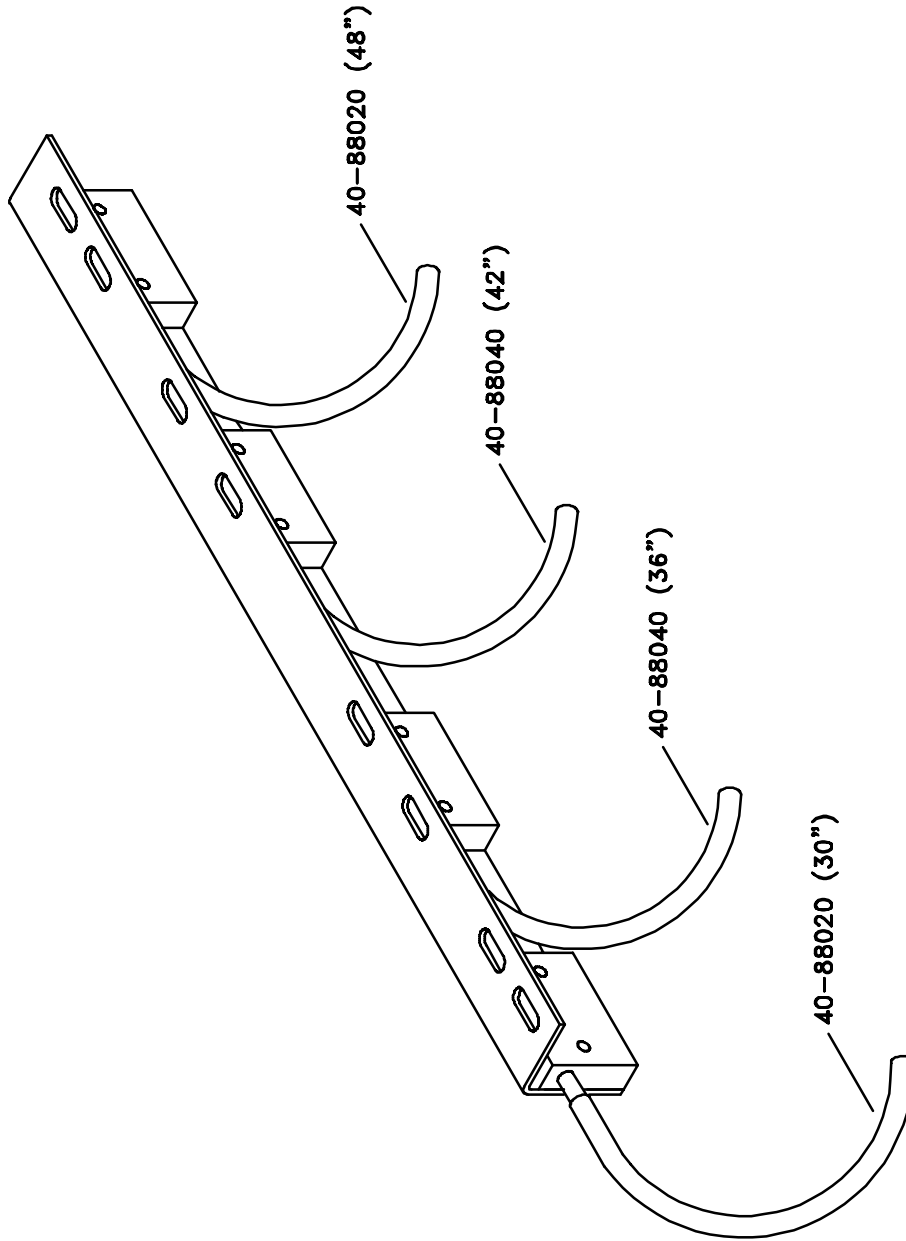


GT01CP13, 7-21-98

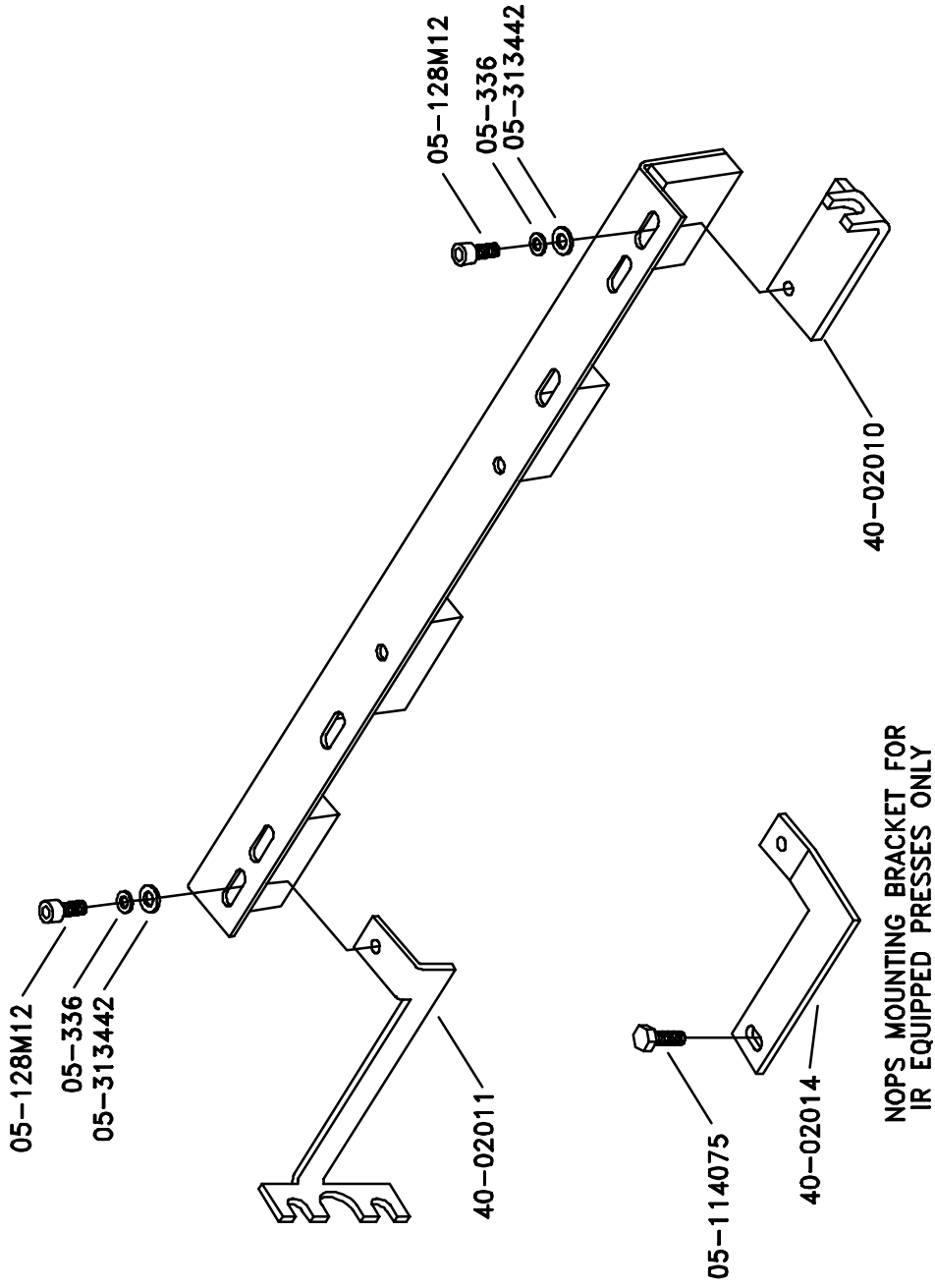




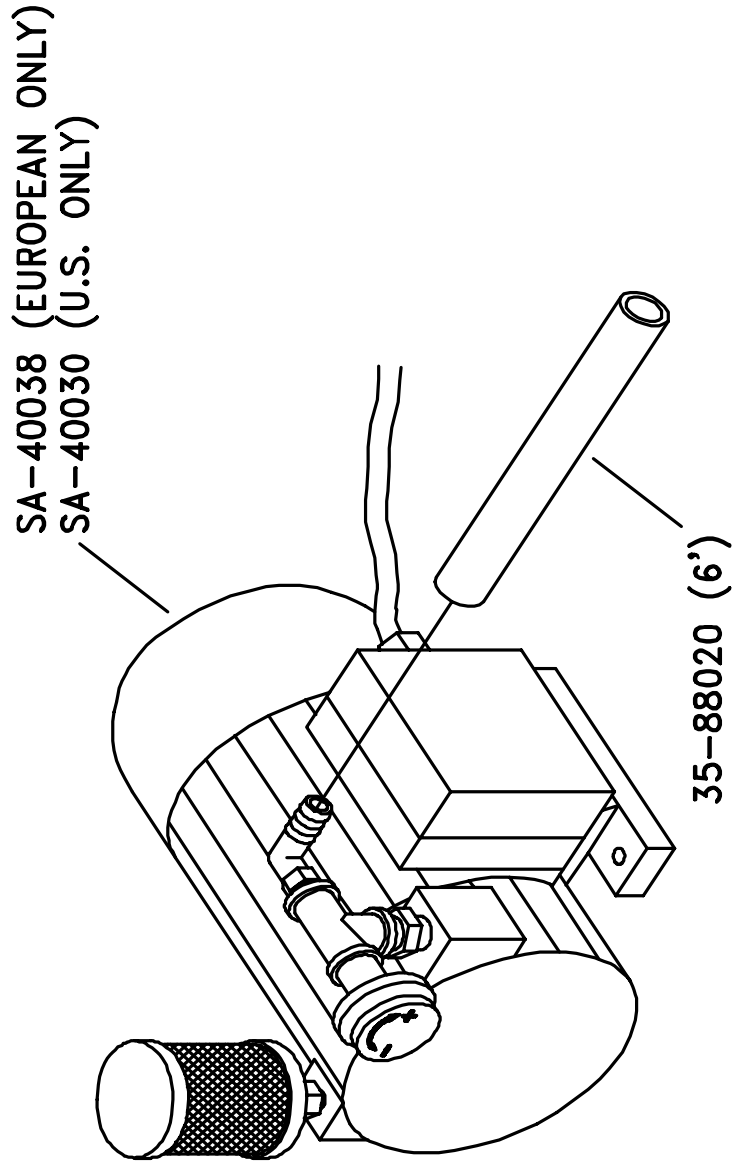
GT01CP15, 7-21-98



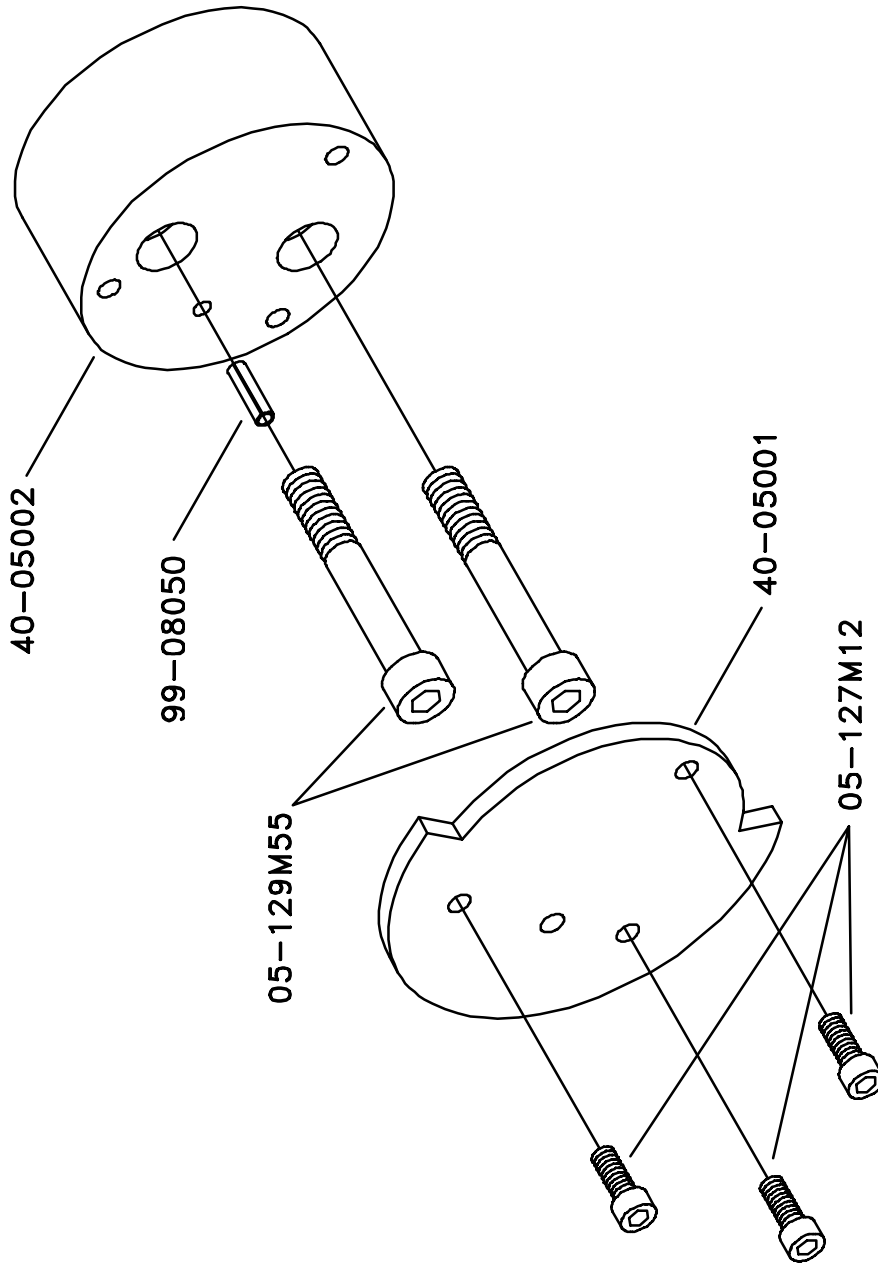
GT01CP16, 7-21-98

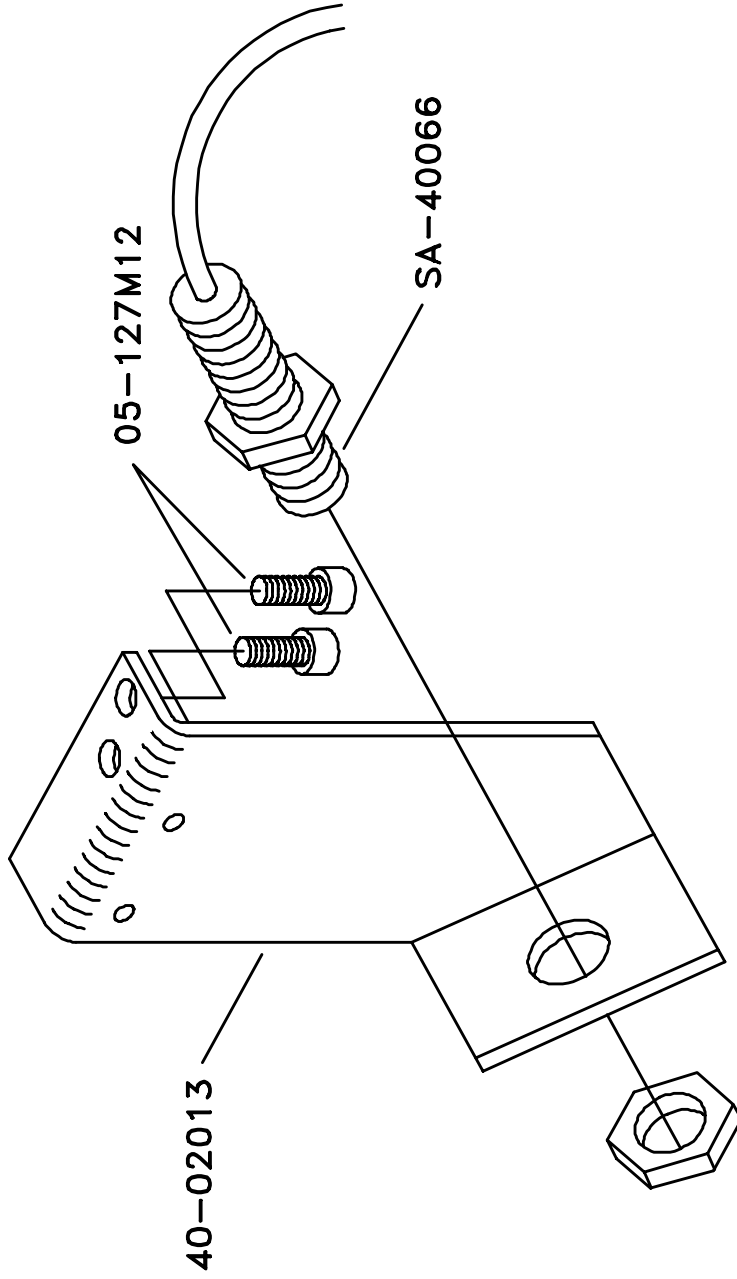


GT01CP17, 7-21-98

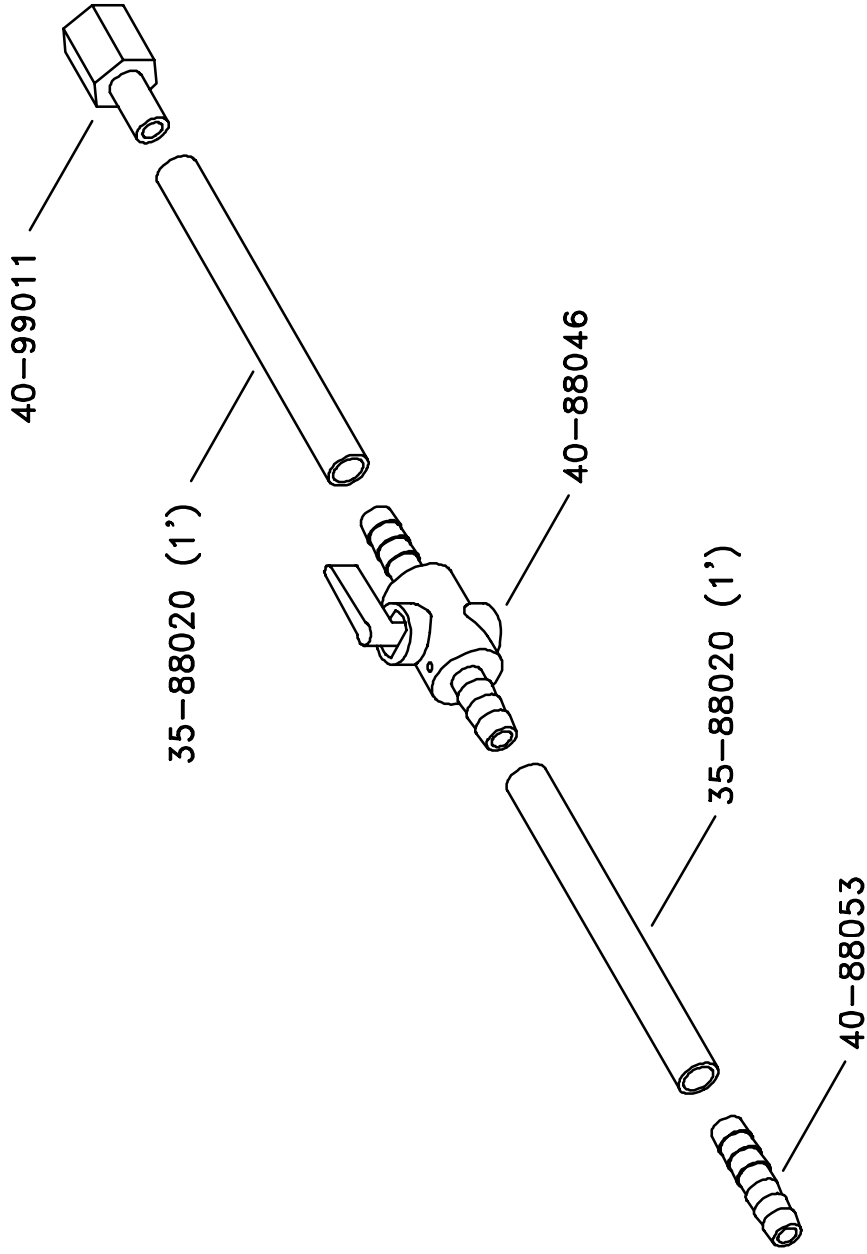


GT01CP1B, 7-21-98

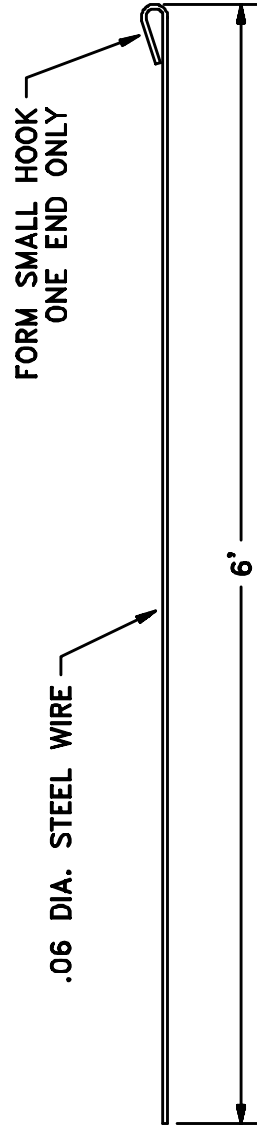
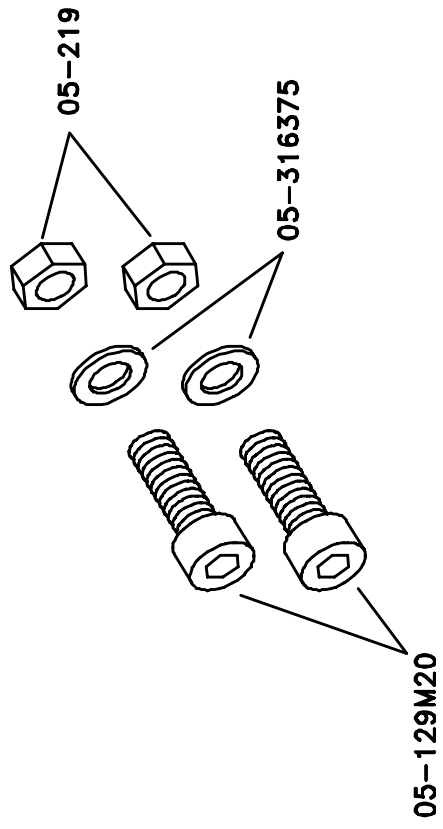




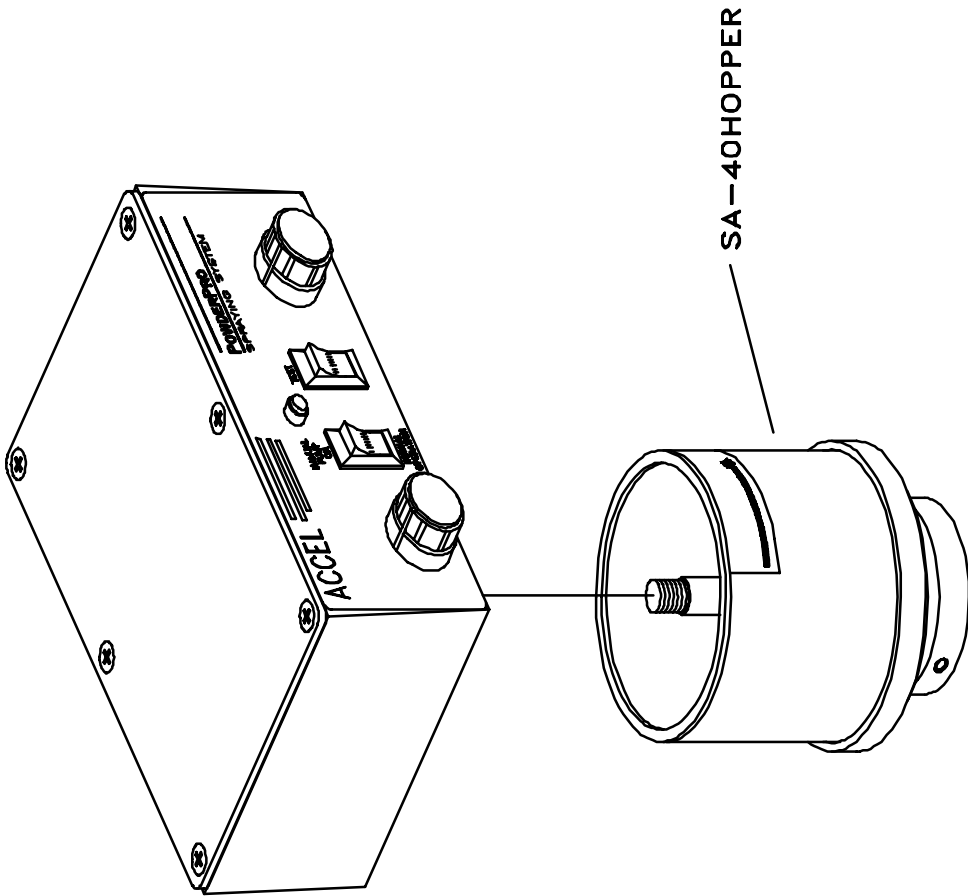
GTDICP20, 7-21-98



GTD1CP21, 7-21-98



GTDICP22, 7-21-98



GTO1CP23, 7-21-98

ACCEL  [®]
Graphic Systems

11103 Indian Trail, Dallas, TX 75229 Phone 972-484-6808, Fax 800-365-6510
E-Mail accel@dallas.net, Web Site www.accelgraphicsystems.com