

# **PowderPro<sup>®</sup> Sprayer**

## **Installation Instructions**

**Heidelberg GTO**

**Multi Color Presses Only**

**ACCEL**  <sup>®</sup>  
*Graphic Systems*



# GENERAL INFORMATION

**ATTENTION  
POWDERPRO®  
OWNER!**

Accel Graphic Systems provides parts and service through its authorized distributors and dealers. Therefore, all requests for parts and service should be directed to your local dealer.

The philosophy of Accel Graphic Systems is to continually improve all of its products. Written notices of changes and improvements are sent to Accel Graphic Systems' Dealers.

If the operating characteristics or the appearance of your product differs from those described in this manual, please contact your local Accel Graphic Systems Dealer for updated information and assistance.

Always update your equipment when improvements are made available, especially those related to safety.

**YOUR AUTHORIZED POWDERPRO® DEALER IS:**

---

---

---

---

**THE SERIAL NUMBER OF YOUR  
POWDERPRO® IS:**

---

---

For technical assistance, please contact

**ACCEL GRAPHIC SYSTEMS**  
11103 Indian Trail  
Dallas, TX 75229  
PHONE (972) 484-6808  
FAX (800) 365-6510  
E-MAIL [accel@dallas.net](mailto:accel@dallas.net)  
WEB SITE [www.accelgraphicsystems.com](http://www.accelgraphicsystems.com)

**PowderPro® is covered by U.S. Patents Pending**



# INSTALLATION

**1**

Disconnect the electrical power to the press.

---

**2**

Remove the original powder spray hopper, pump and solenoid from the press. Do not remove the sprayer electrical box. Remove the cover on the electrical box to disconnect the pump and solenoid wires. Do not replace cover at this time.

---

**3**

Remove original spray bar from the press.

**5**

Diagram A

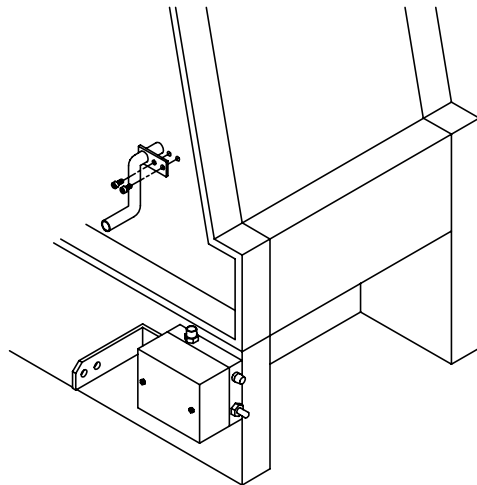
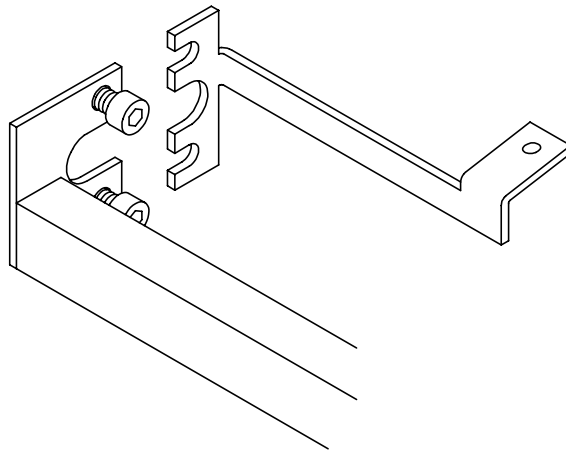


Diagram B



## INSTALLATION

4

Remove NOPS press side cover on the last printing unit.

5

Remove the transition pipe from the press as shown in Diagram A. To take the transition pipe off, remove the large spring in front of it. Once the transition pipe is removed, replace the spring.

6

**Note: If the press is equipped with an IR dryer, skip to step 7.**

Loosen the two M8 bolts securing the delivery light to the NOPS press frame. Back the bolts out at least 1/8". Install the PowderPro® NOPS mounting bracket as shown in Diagram B. Skip to step 8.

7

Diagram C

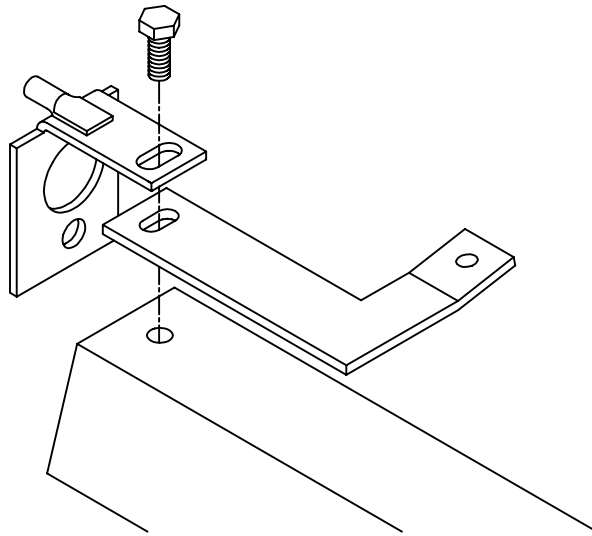


Diagram D

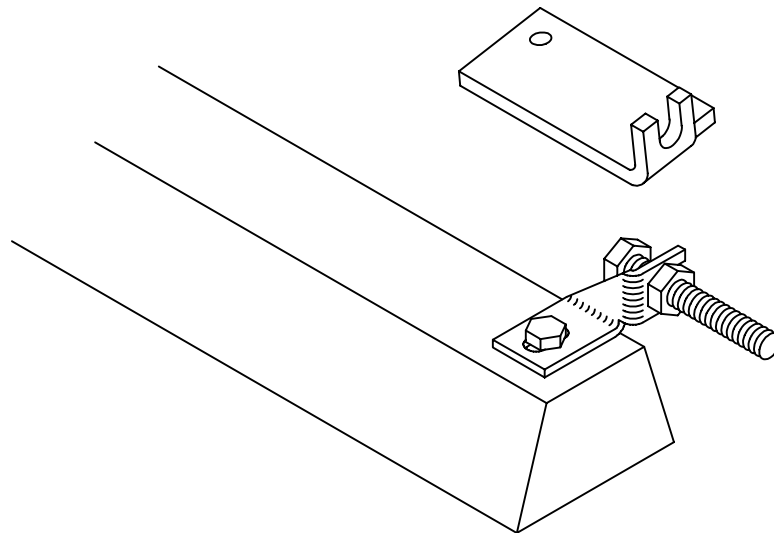
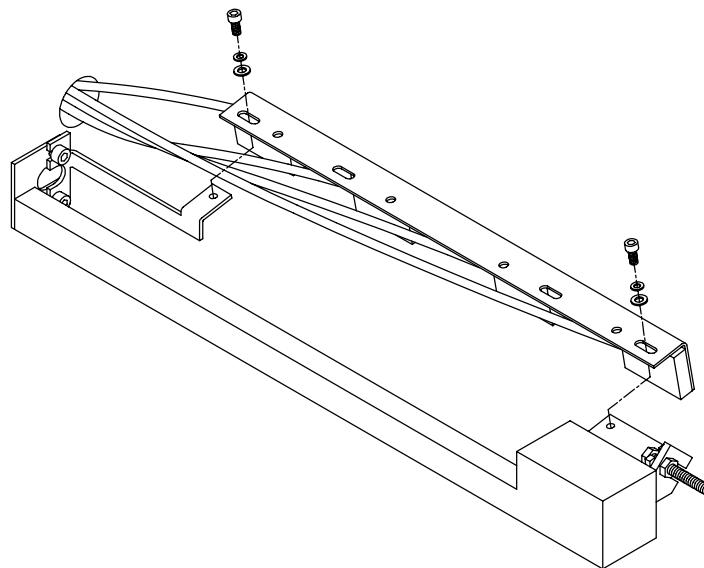


Diagram E



## INSTALLATION

7

While supporting the IR unit remove the bolt on the NOPS that secures the dryer to its mounting bracket. Install the PowderPro® NOPS mounting bracket as shown in Diagram C using the supplied longer bolt.

8

Loosen the lock nuts securing the IR unit (or delivery light) to the long M8 bolt on the OPS. Back the bolt out of the press frame at least 1/8". Install the PowderPro® OPS mounting bracket between the head of the bolt and the IR mounting bracket, as shown in diagram D. Tighten the bolt up enough so that the head of the bolt is contacting the PowderPro® bracket. Rotate the bracket so that it matches the angle of the NOPS bracket before tightening the lock nuts.

9

Attach the spray bar to the mounting brackets as shown in Diagram E. Route the hoses thru the hole at the NOPS where the original pipe was removed in Step 5.

9

Diagram F

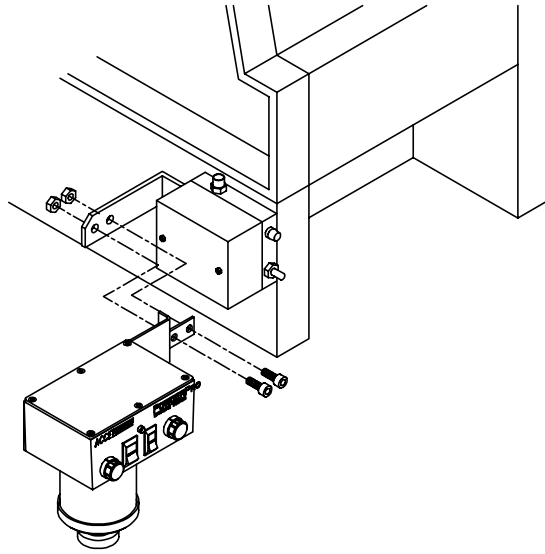
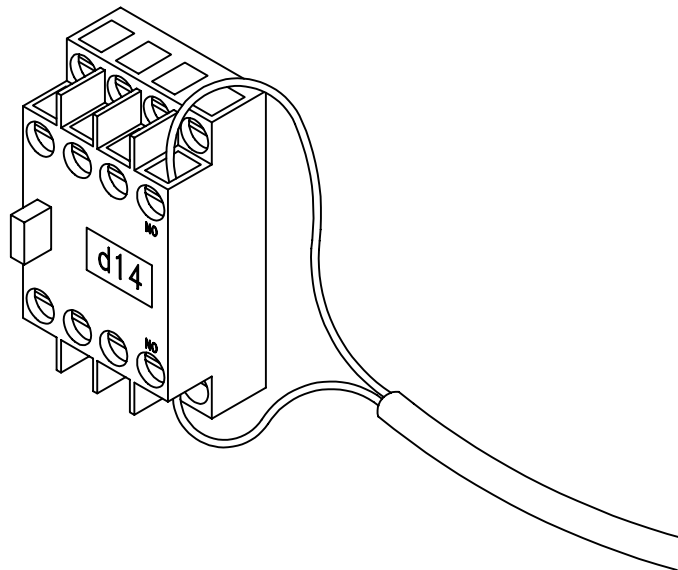


Diagram G



## INSTALLATION

10

Use the provided hardware to secure the PowderPro® control box to the existing bracket as shown in Diagram F.

11

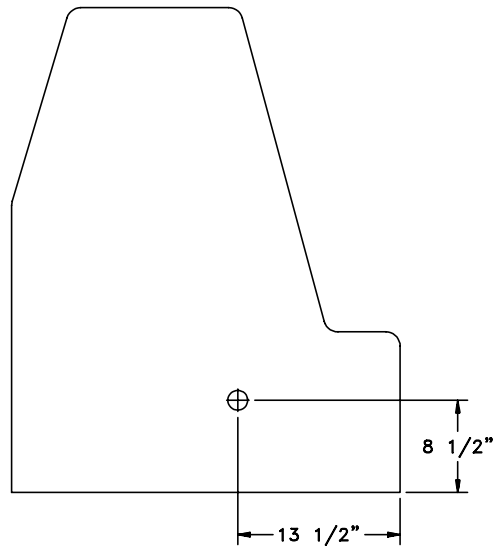
**INSTALLATION TIP:** The next two steps involve routing cables from the NOPS to the OPS. Use the supplied length of steel wire to pull the cables through the press.

Attach the cable with the blue tape on one end to the connector coming out of the PowderPro® control box that also has blue tape on it. Route this cable through the press to the OPS. Locate the cam activated powder spray length switch. Make note of the terminal positions that the original wires are connected to on this switch and remove them. Use the provided closed end splice connectors to terminate the ends of the wires. Attach the wires in the PowderPro® cable to the same terminals (normally open) on the switch that the original wires were attached. Use the provided tie wraps to secure the end of the original cable and the new cable as necessary.

12

Attach the cable with the red tape on one end to the connector coming out of the PowderPro® control box that also has red tape on it. Route this cable through the press to the OPS and into the electrical cabinet. Locate the D14 relay. Insert the ends of the cable into the relay as shown in diagram G. **Make sure that the contacts used on the D14 relay are normally open and are not being used by other wires (very important).**

Diagram H



## INSTALLATION

**13**

Set the provided pump on the floor behind the PowderPro® control box and connect the pump cable to the control box. Connect the hose coming from the PowderPro® control box to the barbed hose fitting on the pump.

**14**

Using the provided hole saw bit, drill a 1" diameter hole in the NOPS side cover as shown in Diagram H.

**15**

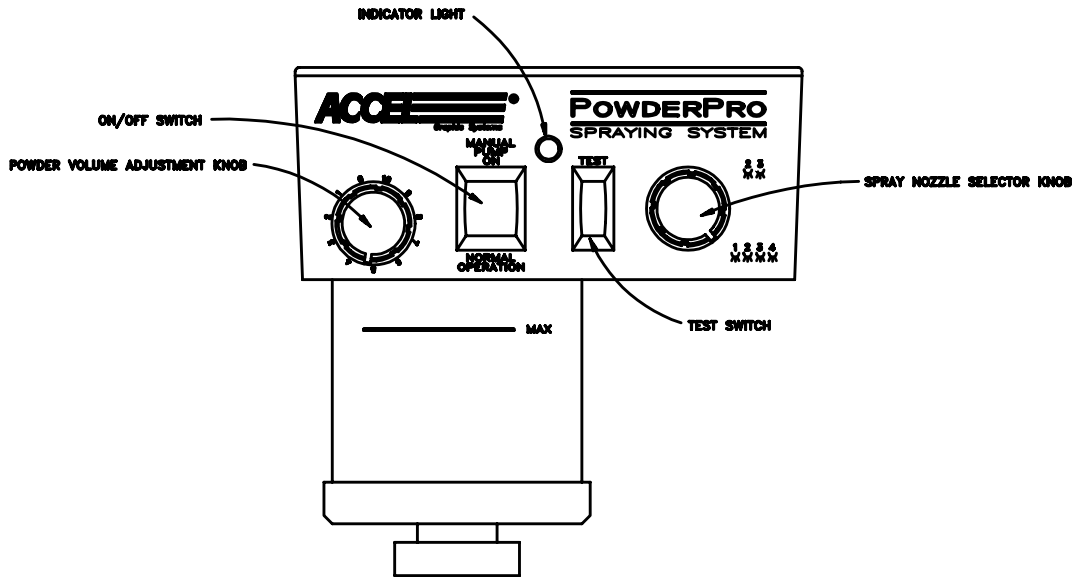
Insert the powder spray hoses through the hole drilled in the side cover and replace cover on press.

Connect the hoses coming through the side cover to the tubes coming out of the PowderPro® control box. Make sure that the black hoses are inserted in the lower tubes (those closest to the press).

Plug the power cord into a standard 115V wall circuit.

**13**

# OPERATION & MAINTENANCE



## POWDER PRO CONTROLS

### VOLUME ADJUSTMENT KNOB

Adjusts the amount of spray powder with “0” the minimum and “10” the maximum.

### ON/OFF SWITCH

When switched to "Manual Pump On" the pump comes on for setting spray powder volume. When switched to the "Normal Operation" position, the system is armed and sprays when the press goes on impression.

### INDICATOR LIGHT

This light is illuminated only when the unit is actually spraying. The light goes on and off as sheets pass under the spray nozzles.

### TEST SWITCH

Use this switch for setting powder volume when not printing. With the "On/Off" switch set at "Manual Pump On", push the test switch to visually see the amount of powder being sprayed, adjust as desired with volume adjustment knob.

### NOZZLE SELECTOR KNOB

This knob lets you control which spray nozzles are being used. For maximum width sheets set the selector to the lower position. This setting sprays all four nozzles. For narrow sheets (generally 11" wide or less) set the selector to the upper position. This setting sprays only the center two nozzles.

# OPERATION & MAINTENANCE

## INITIAL SETTINGS

The initial setting for the powder volume adjustment on an average job is "5". If more powder is required than is available at a setting of "10" you need to adjust the pump. If less powder is required than is available at a setting of "0" you also have to adjust the pump. So that you have a wide range of powder volume adjustment available for different jobs you want your "normal" setting for average jobs to be somewhere in the range from "4" to "6", otherwise you need to adjust the pump.

## PUMP ADJUSTMENT

The pump supplied with your PowderPro® has been preset at the factory. Powder volume range is adjusted by the outlet pressure of the pump. Locate the adjustment knob on the pump near the outlet hose. Loosen the locking knob and turn the adjustment knob clockwise to increase the pressure for more powder. Turn the knob counter clockwise to decrease pressure for less powder. Set the correct pump pressure as follows:

1. Turn the pump on by switching the large switch on the PowderPro® control box to the "Manual Pump On" position.

If the light comes on when you switch to "Manual Pump On" it means the timing cam is in the "Spray On" position. Jog the press until the light goes off.

2. Set the nozzle selector knob on the PowderPro® control box to "4".
3. Set the powder volume adjustment knob to "10".
4. Hold the "Test" switch "On" while looking at the spray nozzles in the delivery.
5. Have someone slowly adjust the pressure on the pump until the powder is barely visible. A powder setting of "10" with visible powder in the delivery is more than enough powder. Consequently, a setting of "5" results in no visible powder but sufficient powder for most jobs.

*If powder is visible at the "5" setting than too much powder is being sprayed. Return to step 3 and reset the pump.*

6. Tighten the locking knob on the pump adjustment.

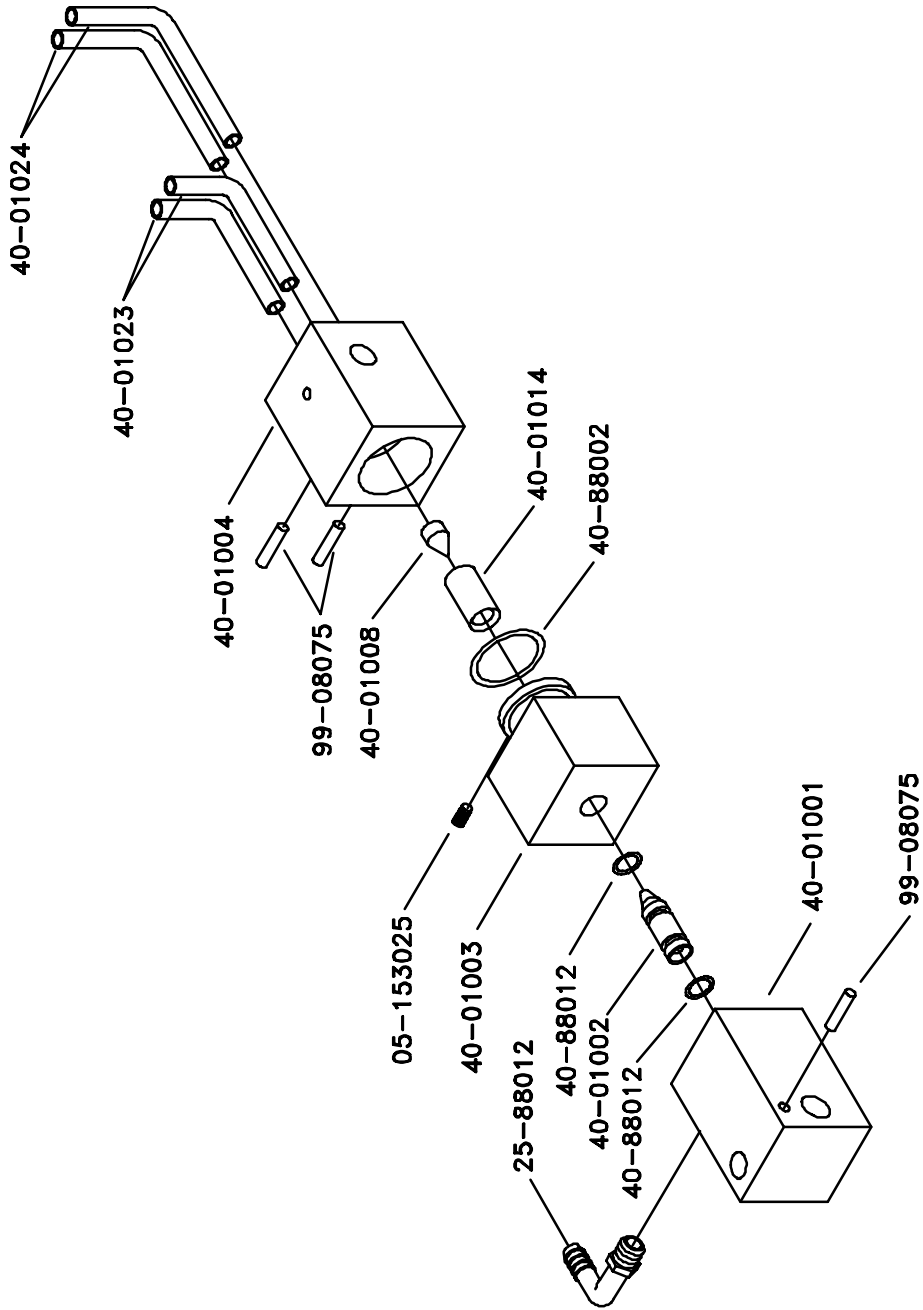
## OPERATION & MAINTENANCE

### MAINTENANCE

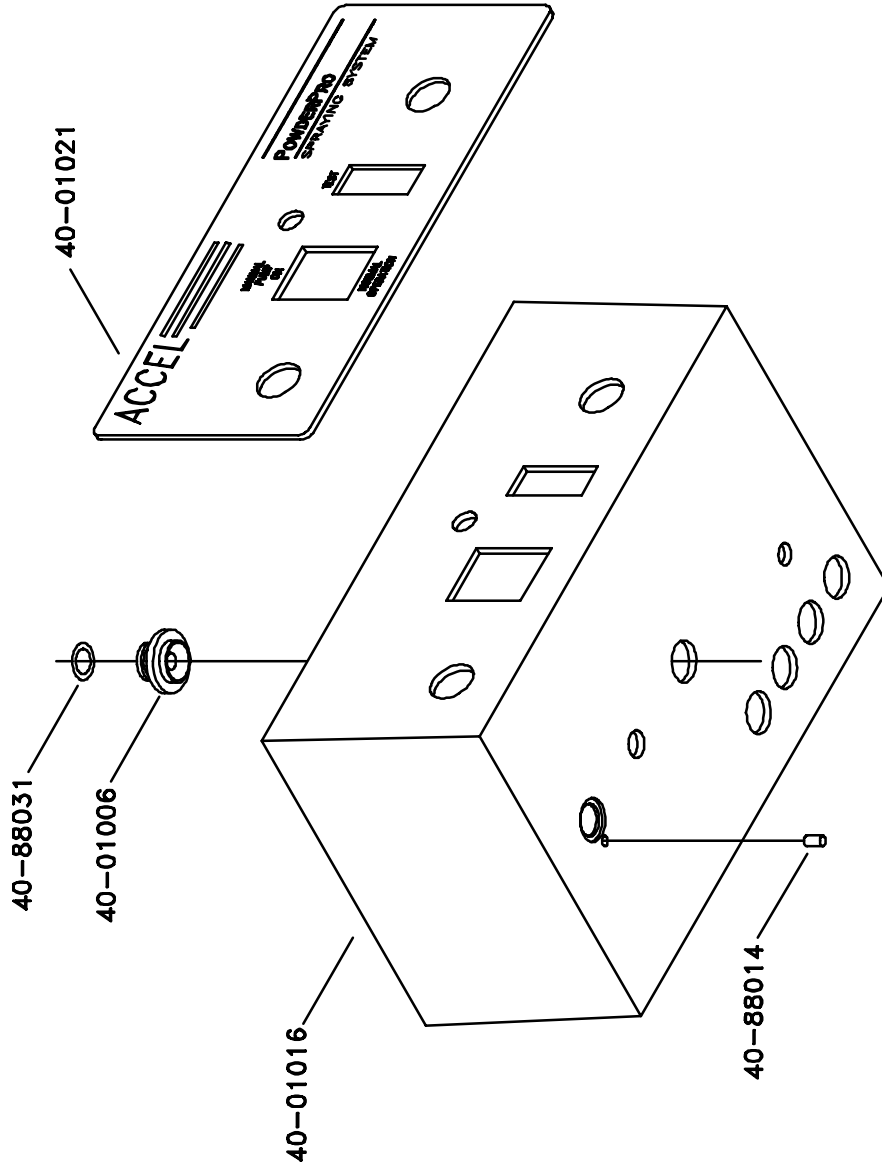
1. Clean the filter on the pump once a week, blowing it clean with compressed air.
2. Remove powder that may accumulate on the bottom of the spray nozzles daily.
3. Never use solvents containing oil when cleaning any part of the sprayer.
4. Use compressed air only if your compressor is equipped with a proper in-line dryer. Otherwise, use canned air. Moisture in the sprayer affects its performance.

### OPERATION

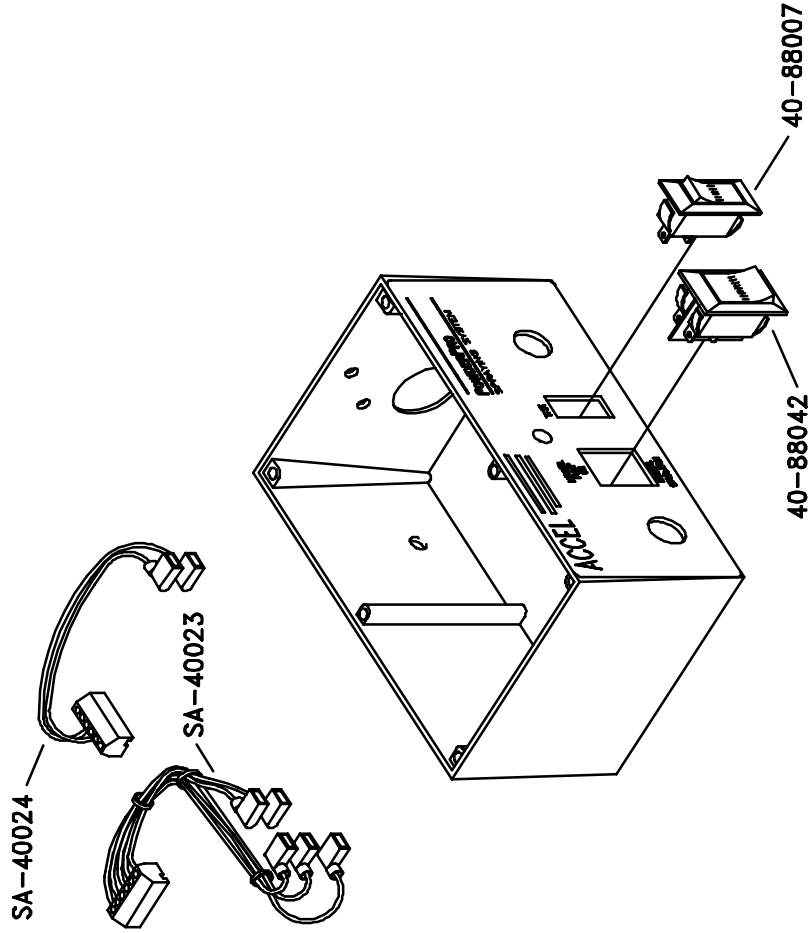
1. Fill the powder hopper with an intermediate grain (20-25) powder (available from Accel) up to the "MAX" line on the hopper.
2. Place the On\Off switch to the "Normal Operation" position.
3. Place the original On\Off switch to the "On" position.
4. Consider the sheet width and if necessary change the spray nozzle selector knob. When switching from four to two nozzles reduce the total amount of powder being sprayed by turning the powder volume adjustment knob to a lower number.
5. The spray length is controlled by the original adjustable cam on the OPS.
6. Adjust the powder volume adjustment knob if necessary.
7. The sprayer operates automatically when the press goes on impression and a sheet is present under the spray nozzles



GT01CP01, 7-21-98

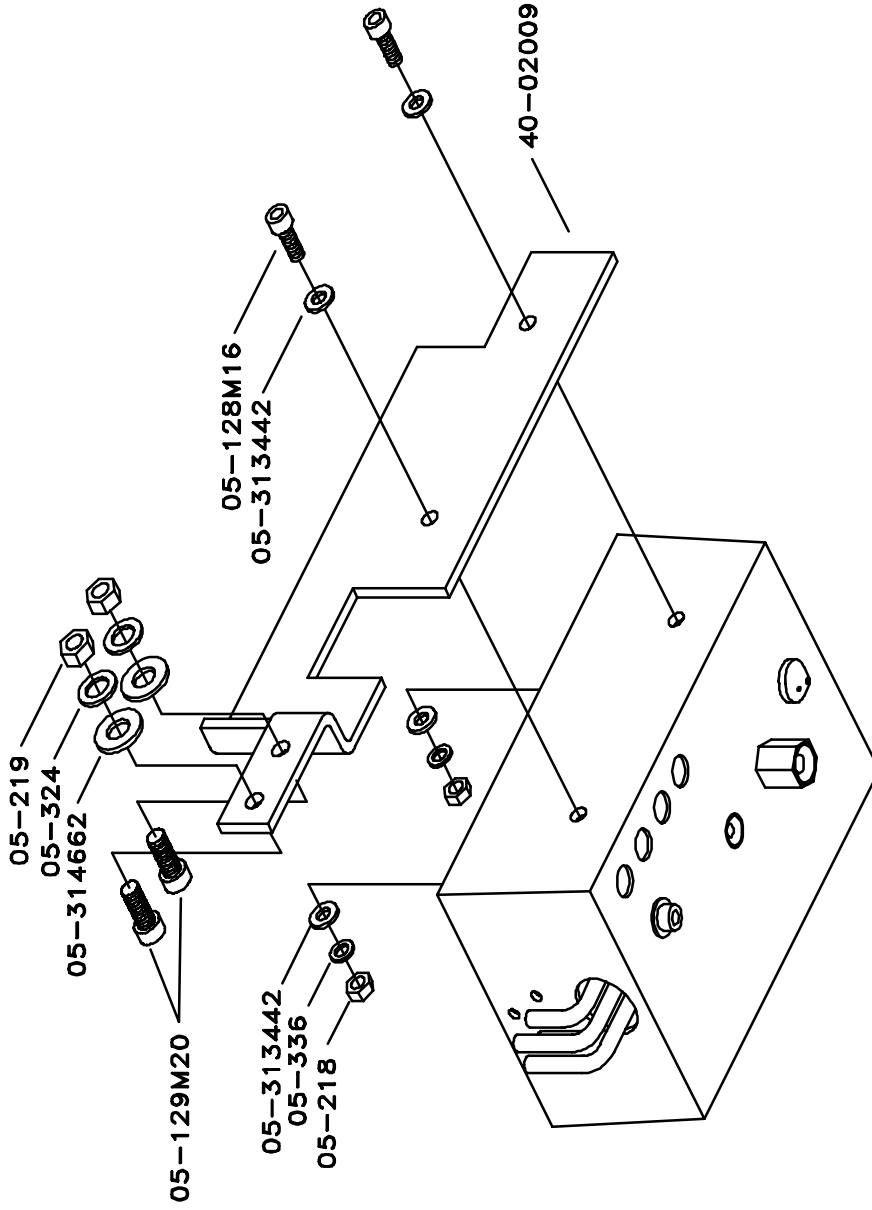


GTO1CP02, 7-24-98

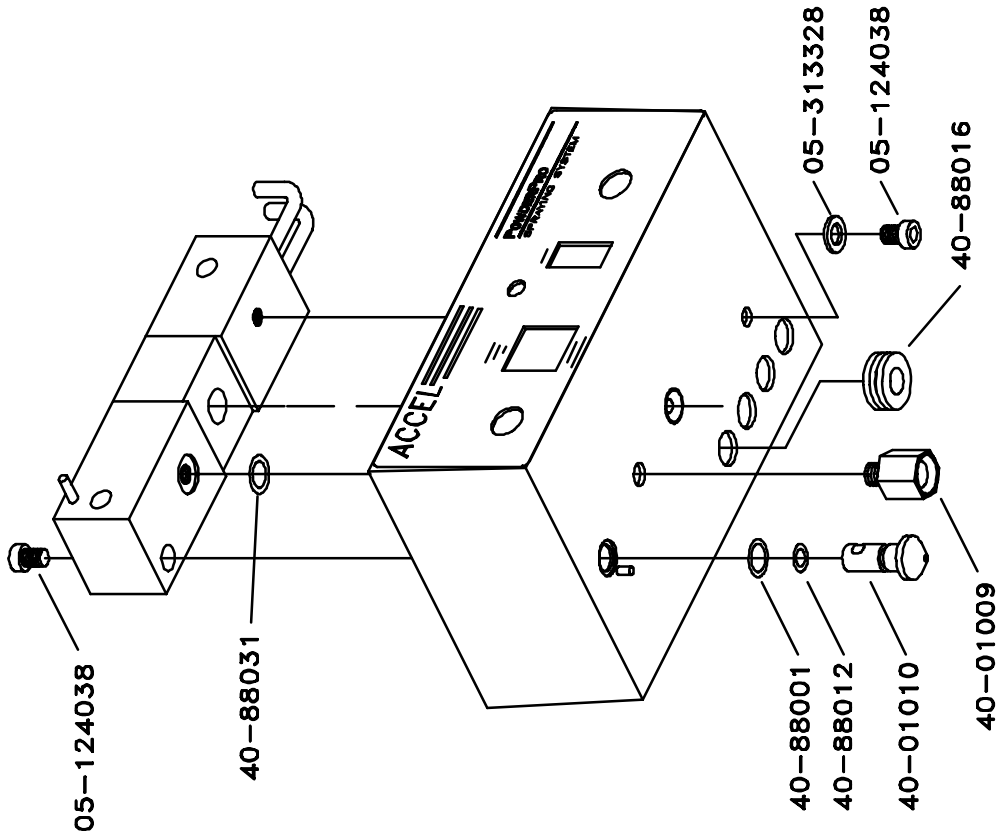


WIRE COLOR	SWITCH POSITION NO.
RED	12
ORANGE	11
BLUE	13
WHITE	24
BLACK	26

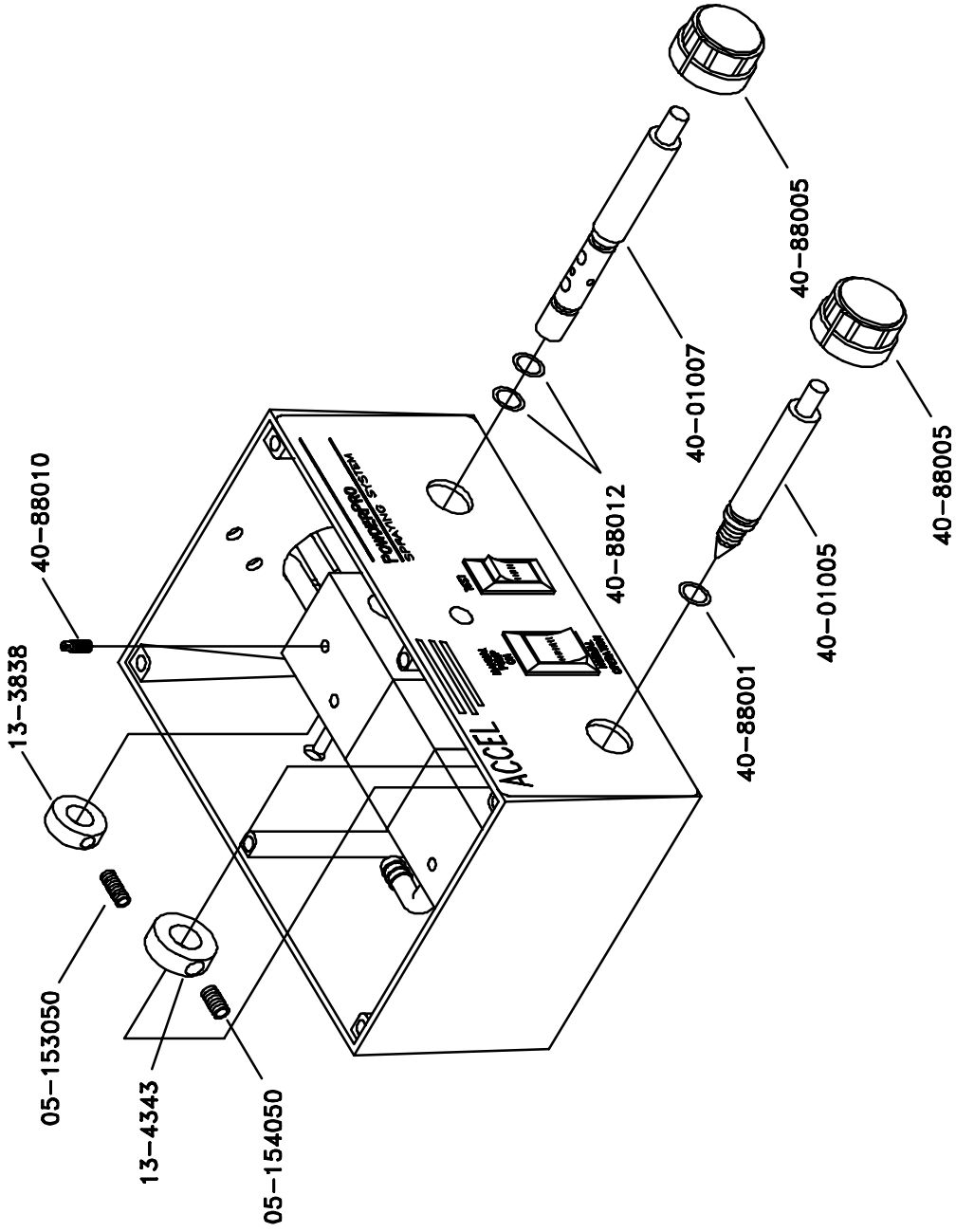
GT01CP03, 7-24-98



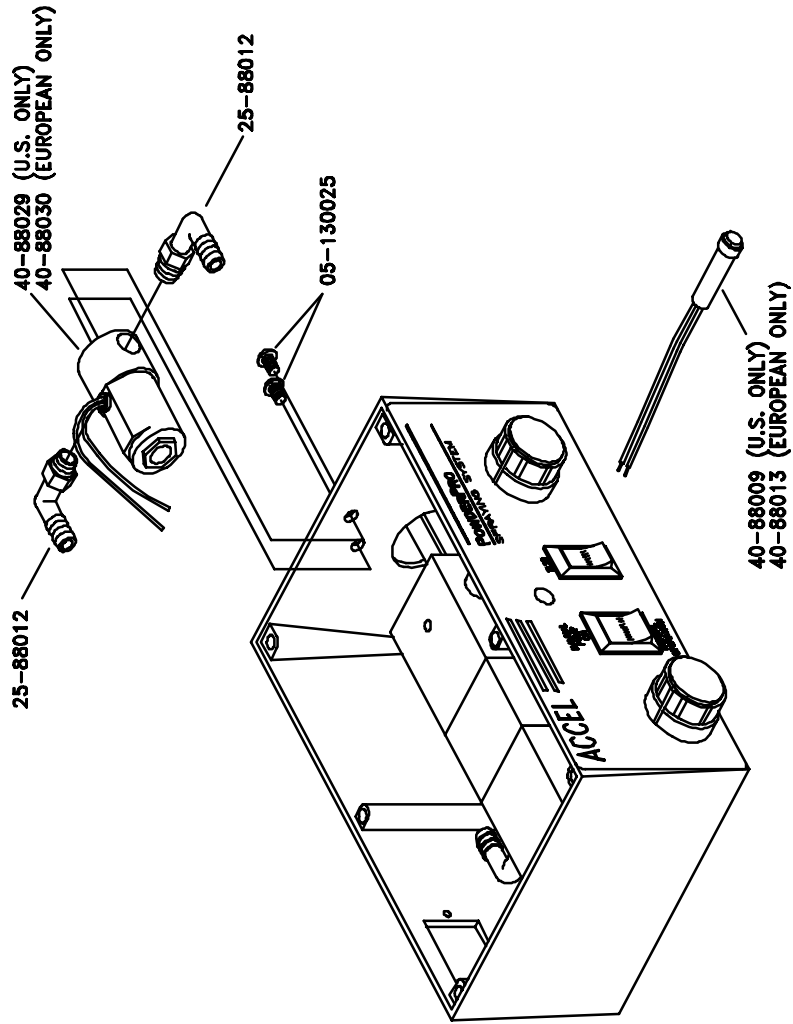
GTDMP01, 7-22-98



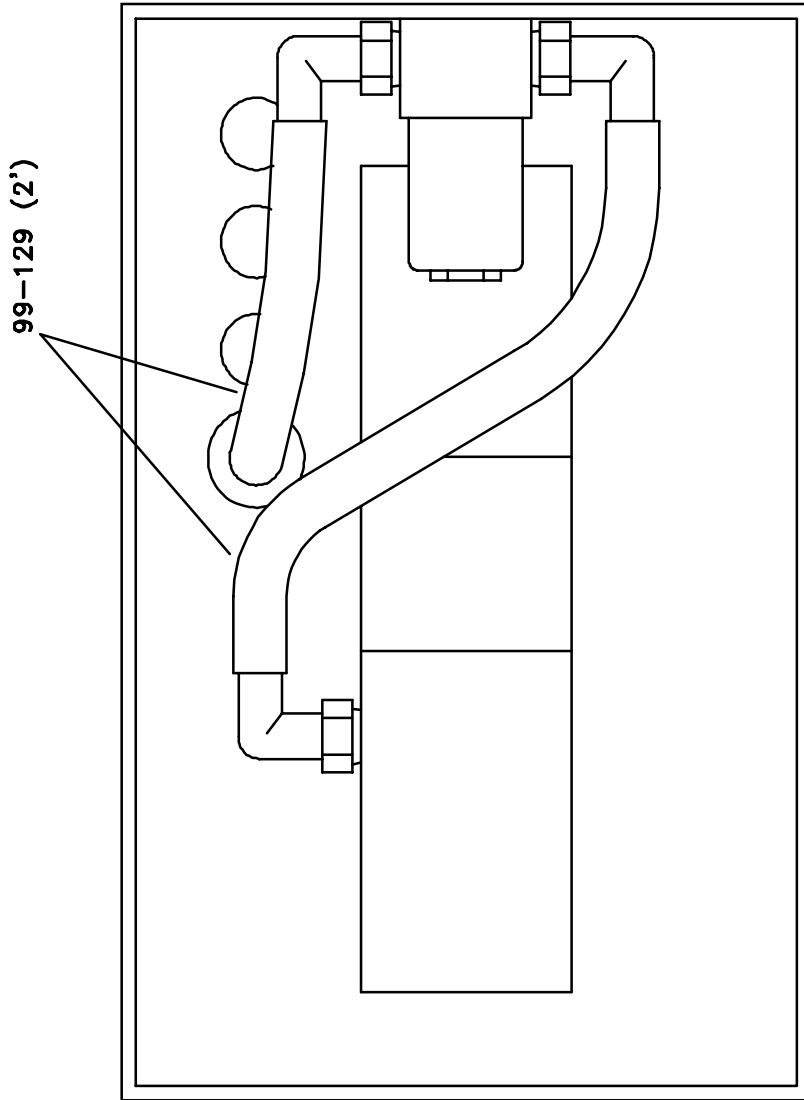
GTO1CP05, 7-21-98



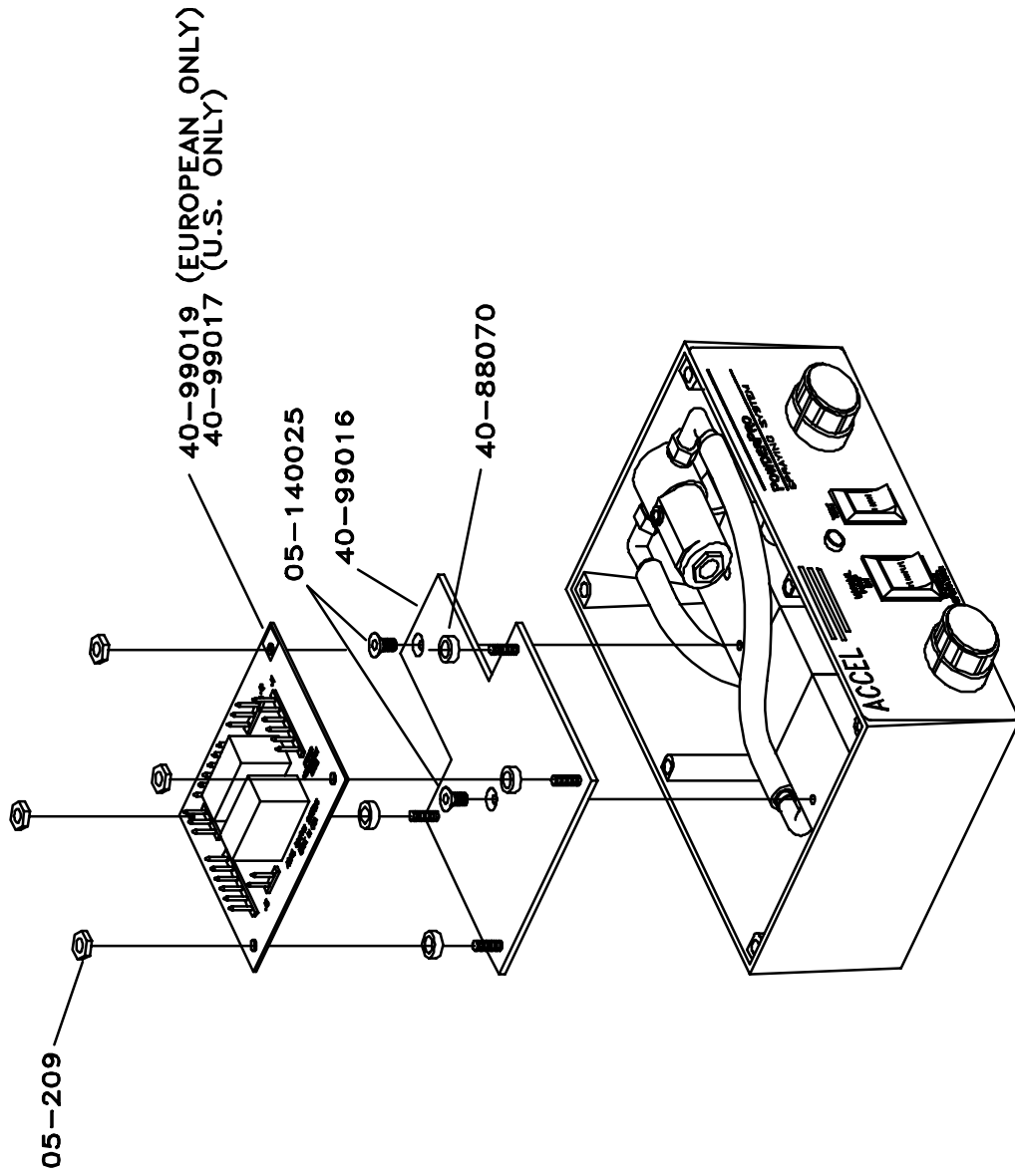
GT01CP06, 7-21-98



GTO1CP07, 7-21-88



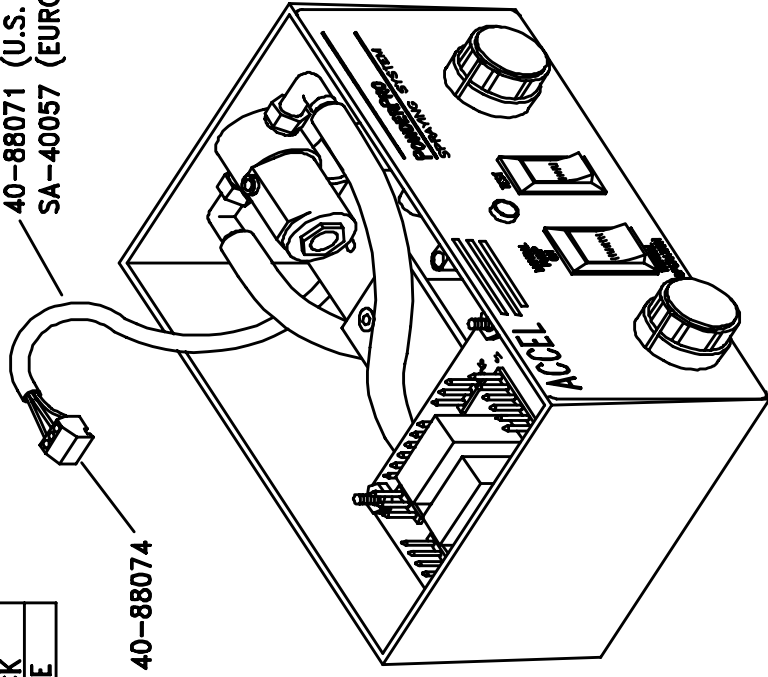
GTO1CF08, 7-21-98



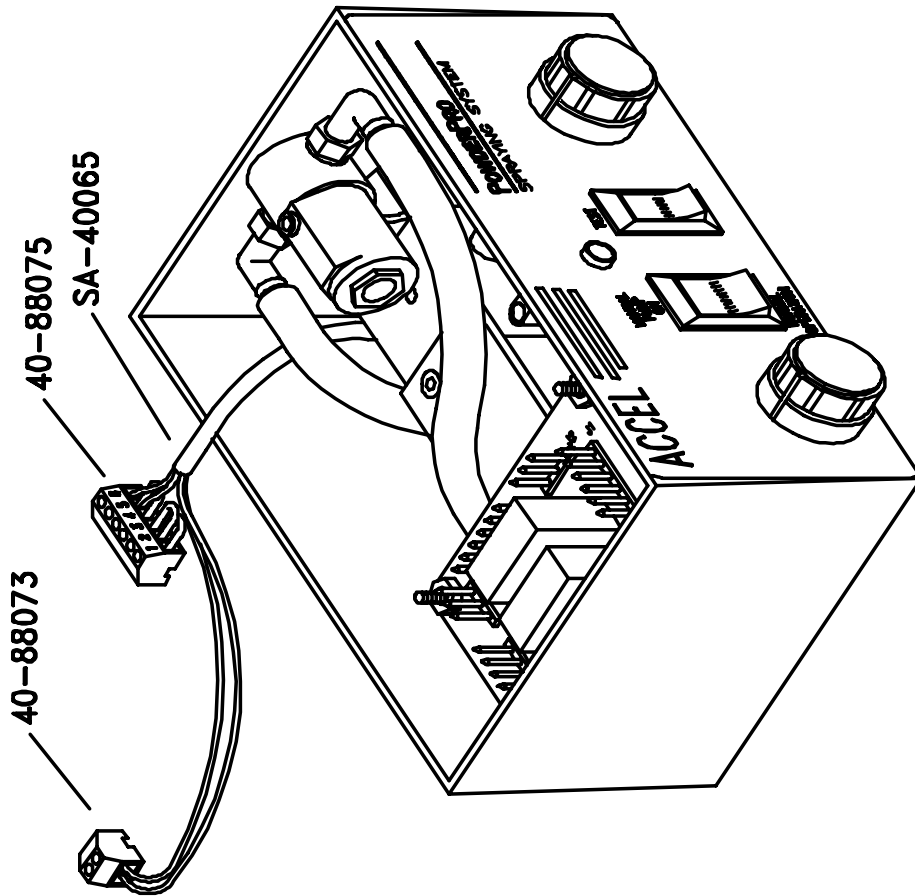
GTO1CF09, 7-21-98

3 POSITION CONNECTOR	
POSITION NO.	WIRE COLOR
1	GREEN
2	BLACK
3	WHITE

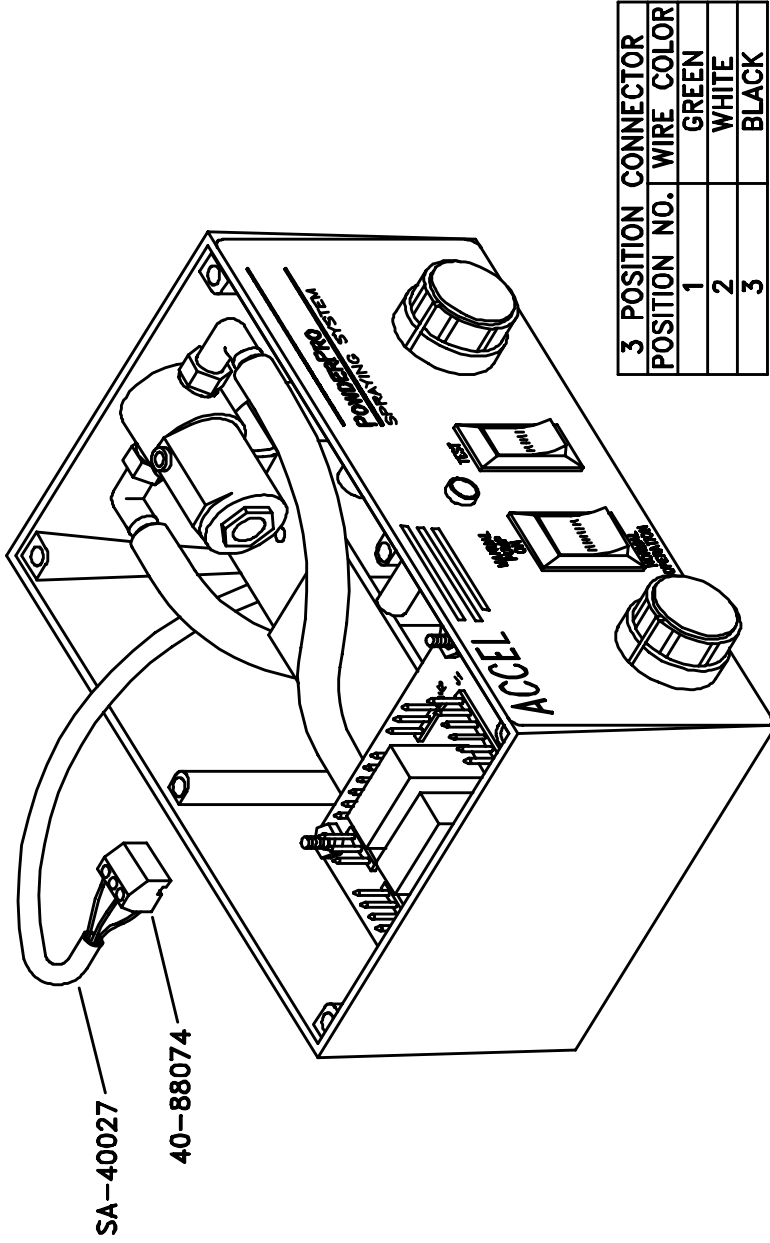
40-88071 (U.S. ONLY)  
SA-40057 (EUROPEAN ONLY)



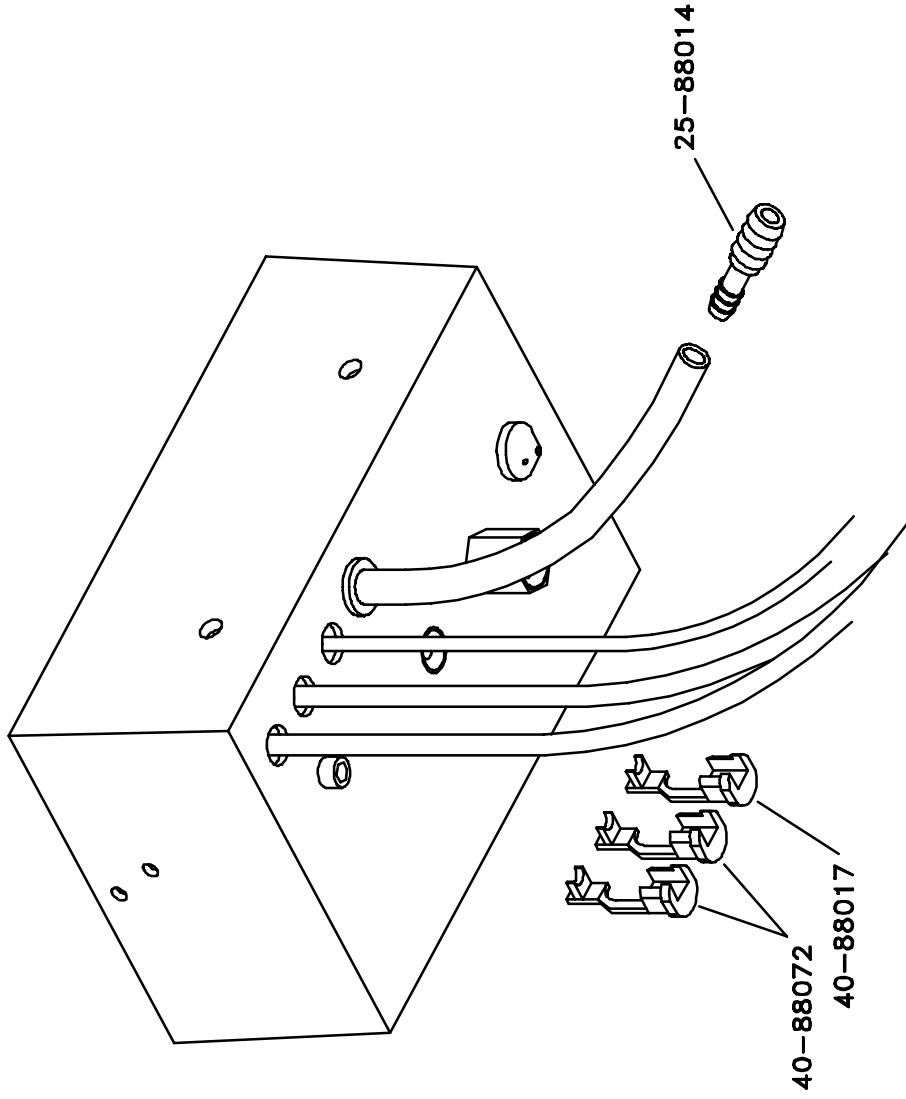
GT01CP10, 7-21-98

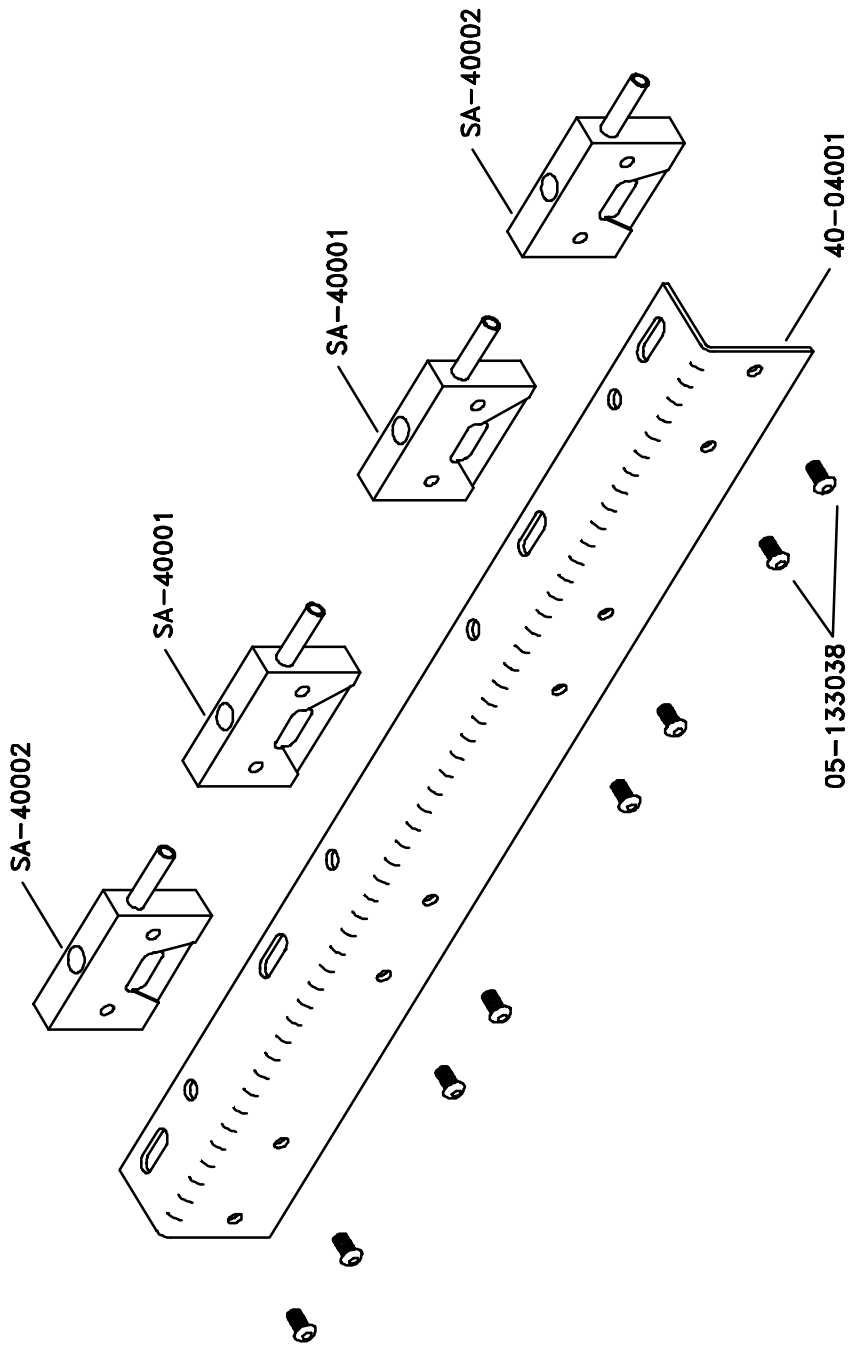


GT01CP1, 7-21-98

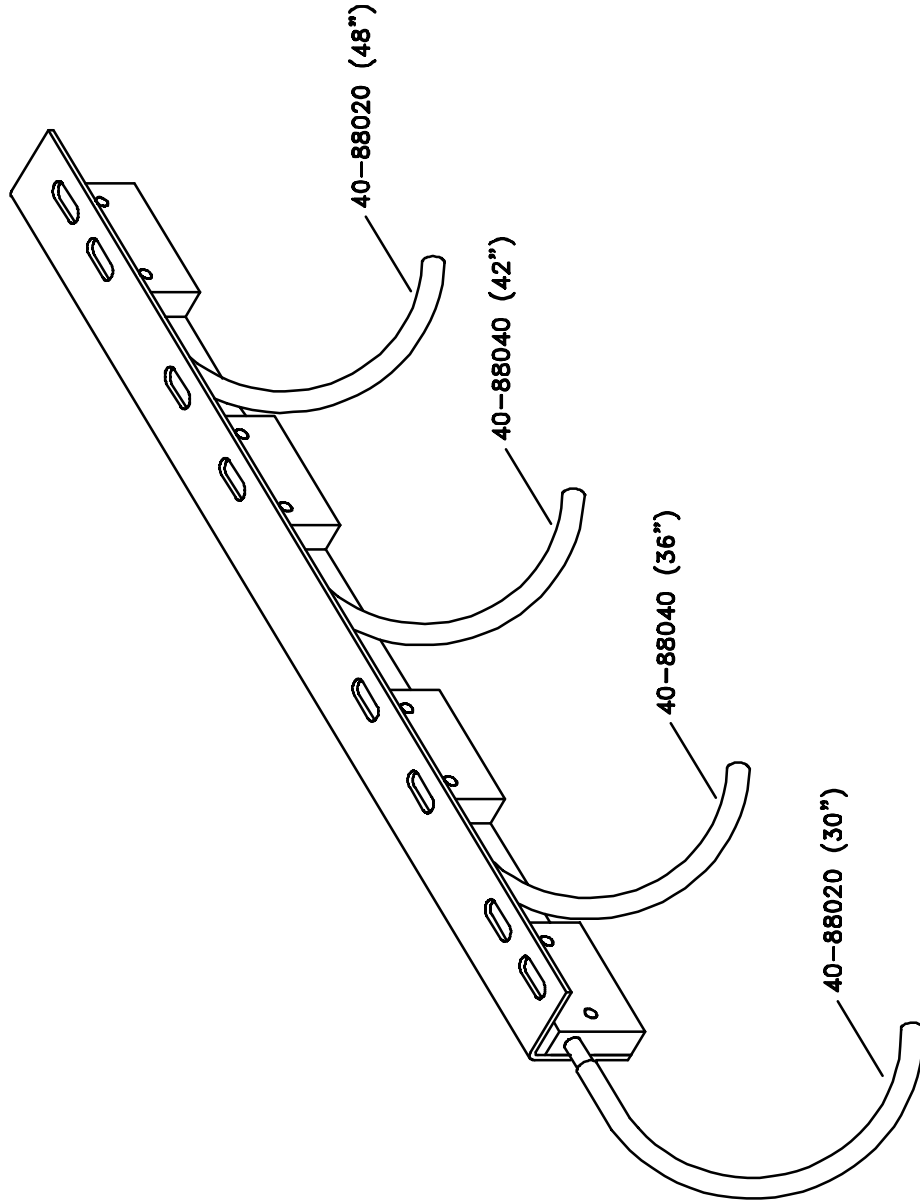


GT01CP13, 7-21-98

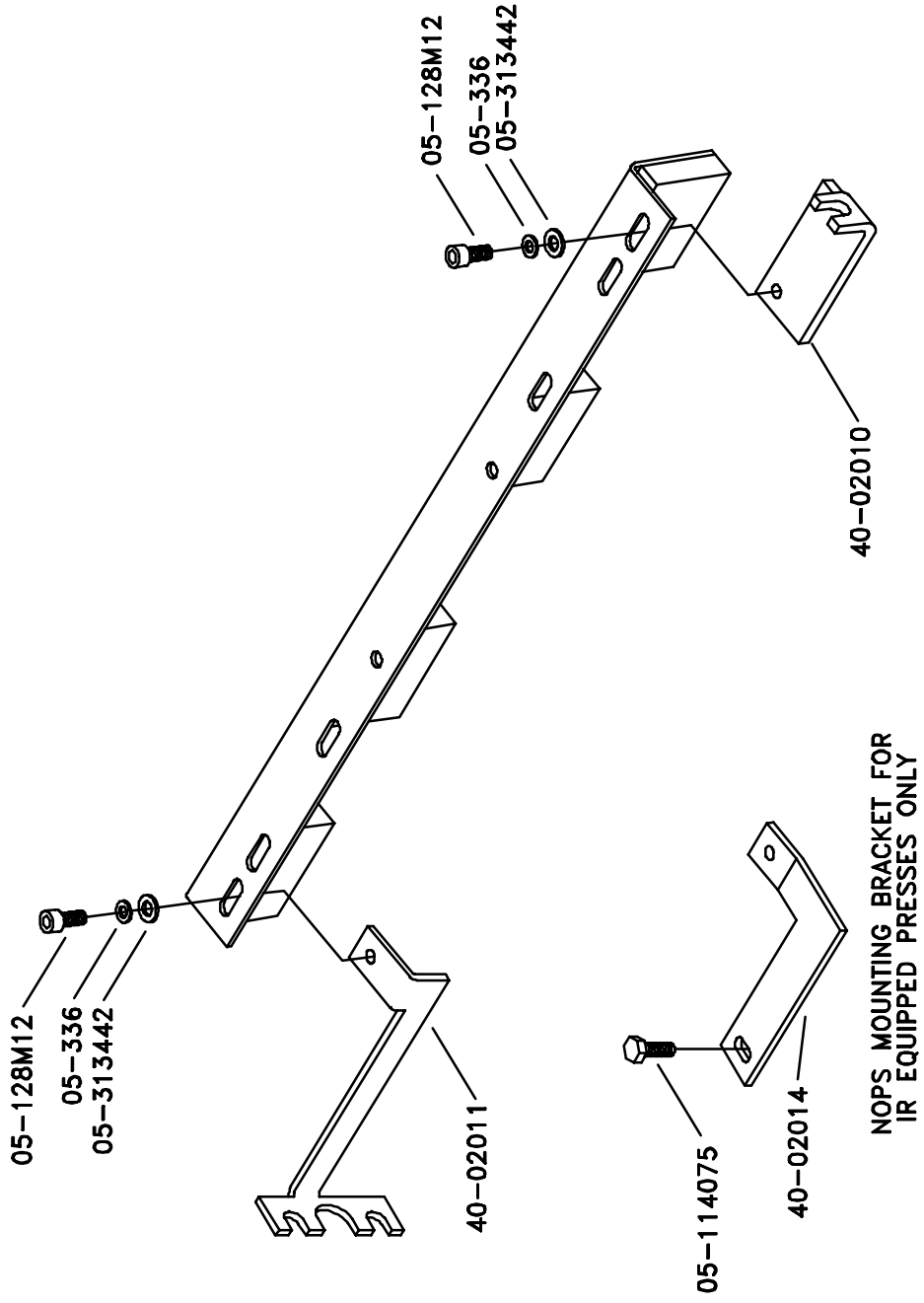




GTO1CP15, 7-21-98

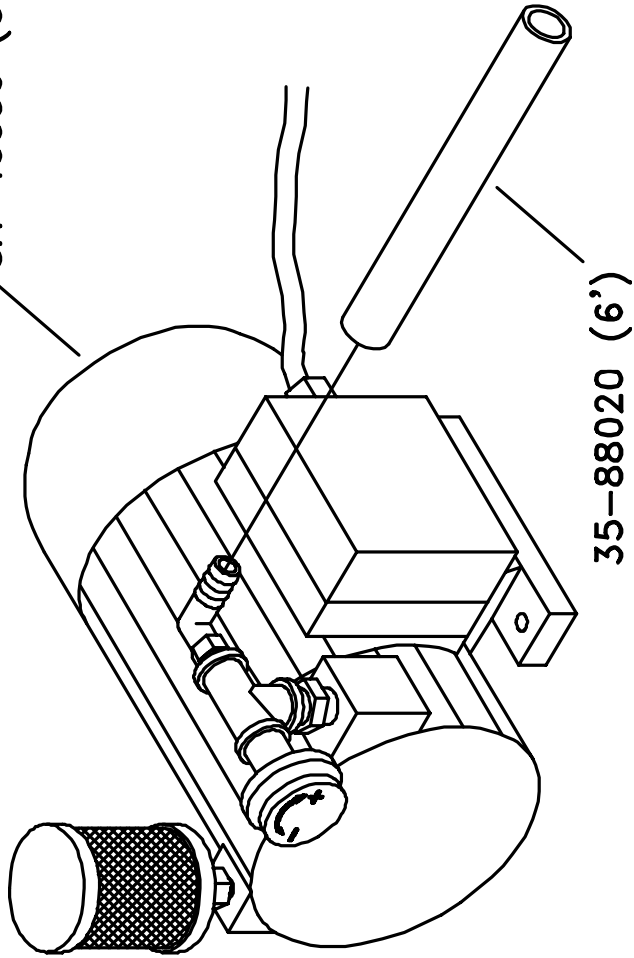


GTO1CP16, 7-21-98

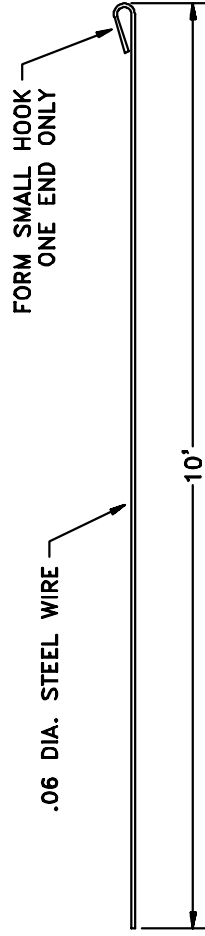
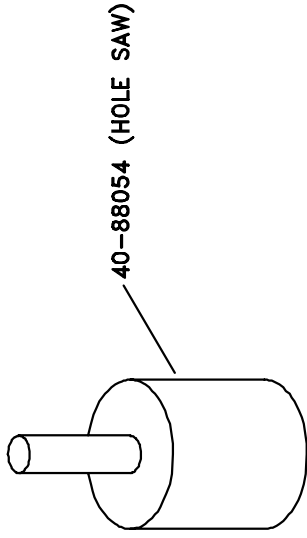


GT01CP17, 7-21-98

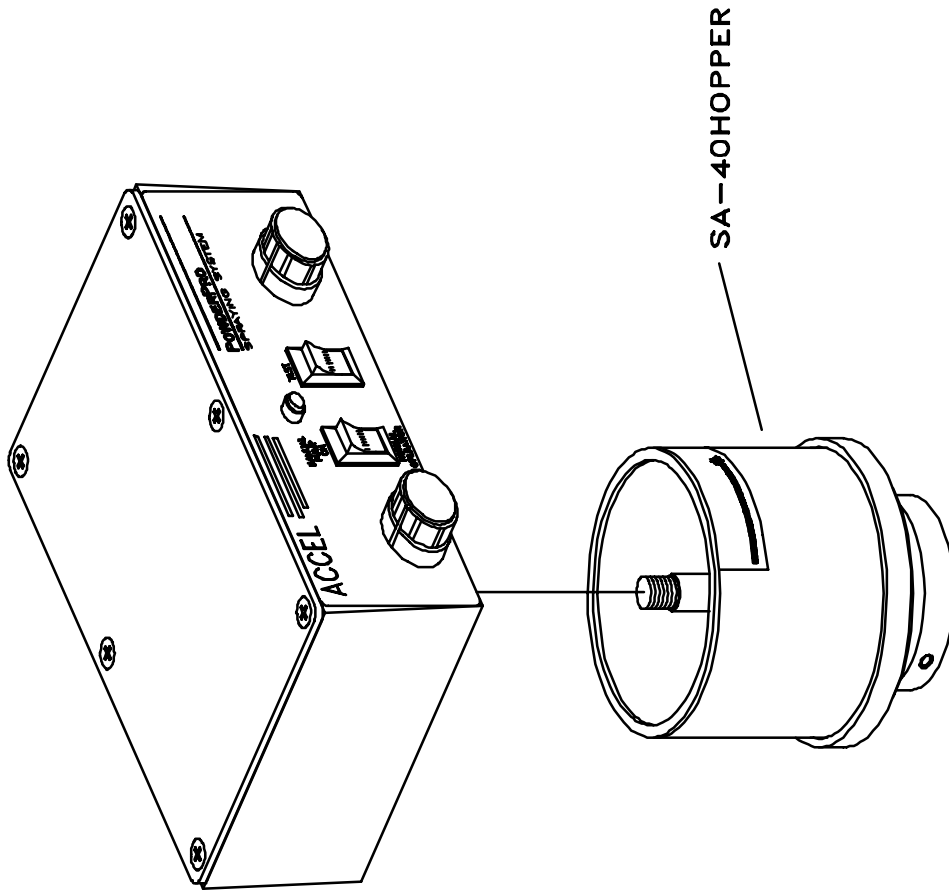
SA-40038 (EUROPEAN ONLY)  
SA-40030 (U.S. ONLY)



GT01CP18, 7-21-98



GDMCP02, 7-22-98



GTO1CP23, 7-21-98



**ACCEL**  <sup>®</sup>  
*Graphic Systems*

11103 Indian Trail, Dallas, TX 75229 Phone 972-484-6808, Fax 800-365-6510  
E-Mail [accel@dallas.net](mailto:accel@dallas.net), Web Site [www.accelgraphicsystems.com](http://www.accelgraphicsystems.com)