

PowderPro[®] Sprayer

Installation Instructions

Hamada RS/VS 34

ACCEL  [®]
Graphic Systems

GENERAL INFORMATION

**ATTENTION
POWDERPRO®
OWNER!**

Accel Graphic Systems provides parts and service through its authorized distributors and dealers. Therefore, all requests for parts and service should be directed to your local dealer.

The philosophy of Accel Graphic Systems is to continually improve all of its products. Written notices of changes and improvements are sent to Accel Graphic Systems' Dealers.

If the operating characteristics or the appearance of your product differs from those described in this manual, please contact your local Accel Graphic Systems Dealer for updated information and assistance.

Always update your equipment when improvements are made available, especially those related to safety.

YOUR AUTHORIZED POWDERPRO® DEALER IS:

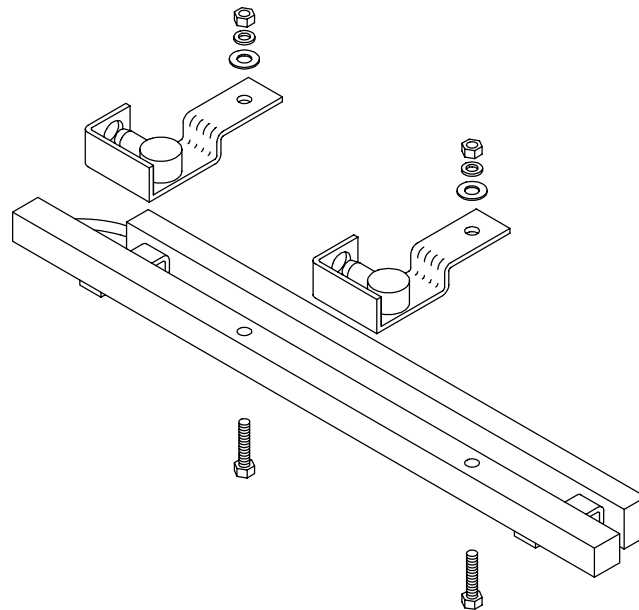
**THE SERIAL NUMBER OF YOUR
POWDERPRO® IS:**

For technical assistance, please call or contact

**ACCEL GRAPHIC SYSTEMS
11103 Indian Trail
Dallas, TX 75229
(214) 484-6808
FAX (800) 365-6510**

PowderPro® is covered by U.S. Patents Pending

Diagram A



INSTALLATION

1

Disconnect the electrical power to the press.

2

Remove the NOPS delivery side cover, NOPS side cover below the parent head printing unit and the OPS feeder side cover.

3

Remove original spray system from the press including the spray heads (Diagram A), hoses and hopper. Disconnect the wires from the original solenoid but do not remove the solenoid from the press. Save the bolts used to secure the original spray heads to the tie bar and the bolts that attach the hopper mounting bracket to the press frame.

5

Diagram B

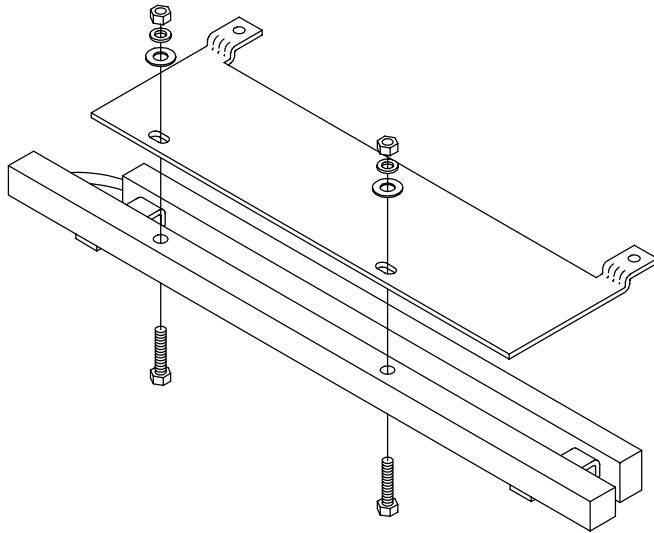


Diagram C

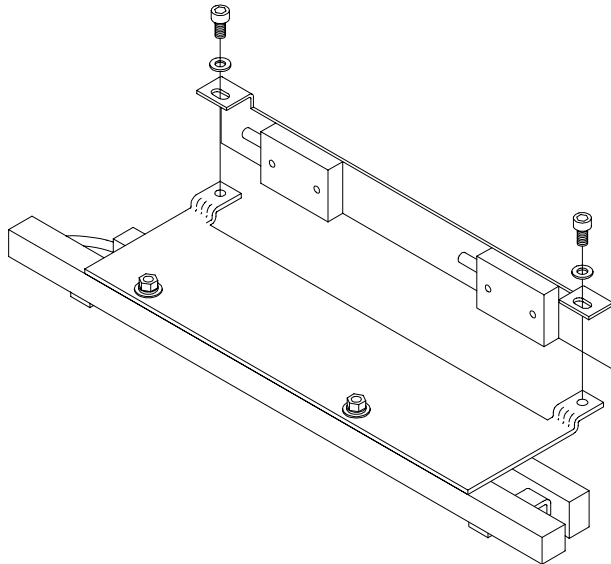
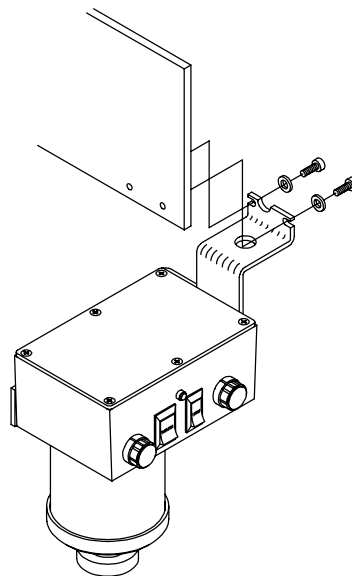


Diagram D



INSTALLATION

4

Install the new PowderPro® spray bar mounting bracket to the feeder side of the tie bar using the original hardware as shown (Diagram B).

5

Using the provided hardware attach the PowderPro® spray bar assembly to the mounting bracket that was installed in the previous step as shown (Diagram C.) Route the hoses through the same hole in the NOPS press frame that the original hoses went through. Used the provided tie wraps to secure the hoses away from the static eliminator and any moving parts in the delivery.

6

Install the new PowderPro® control box using the same bolts and tapped holes that secured the original powder hopper to the press frame (Diagram D).

7

Diagram E

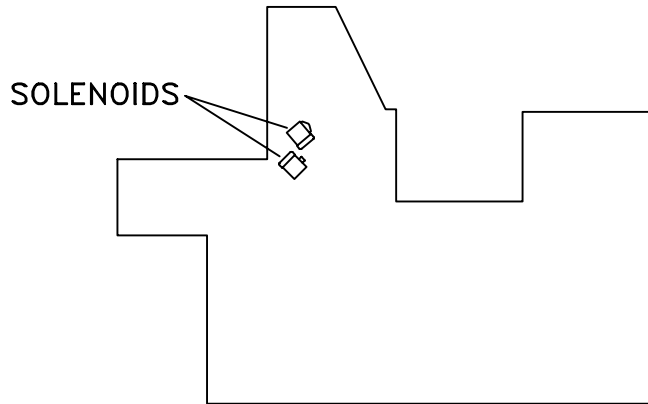


Diagram F

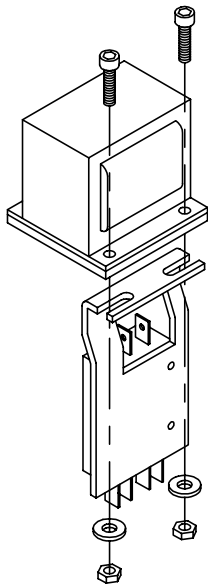


Diagram G

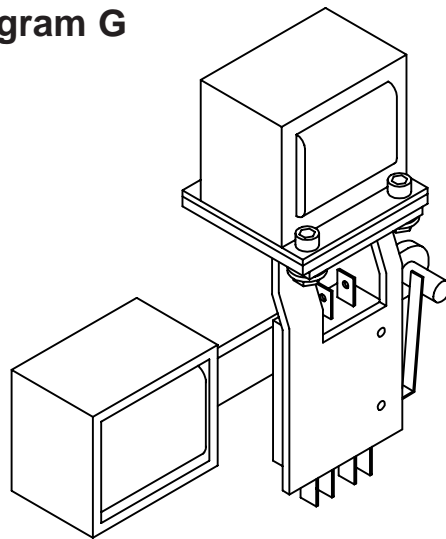
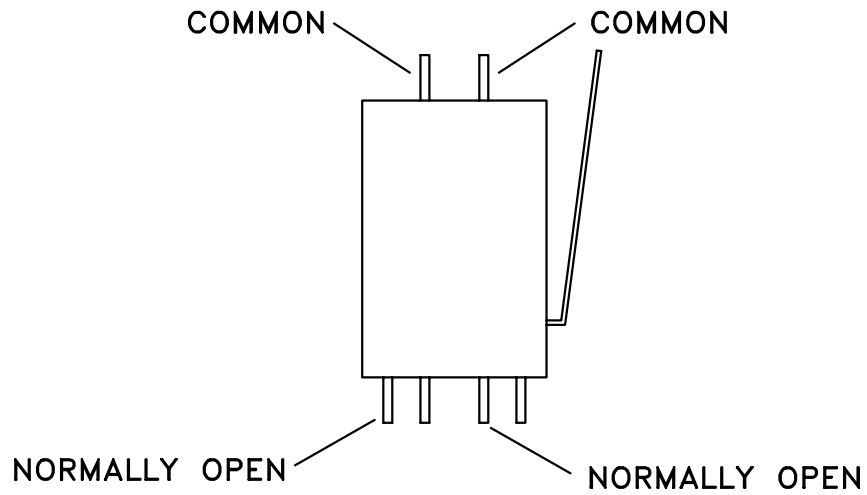


Diagram H



INSTALLATION

7

Attach the hoses from the spray heads installed in step 3 to the tubes coming out of the side of the PowderPro® control box.

8

If the press is already equipped with an Accel Tempest® dryer then it may already have the switch installed in the next step. If the switch is already installed then skip to step 9.

Locate the two solenoids on the OPS as shown in diagram E. Replace the two outside mounting bolts on the upper solenoid with the longer bolts provided. Using the provided M4 nuts and flat washers, install the switch assembly to the underside of the solenoid as shown in diagram F. Before tightening the nuts, make sure that the switch arm just contacts the spring stud on the lever of the lower solenoid as shown in diagram G.

9

Connect the ends of the provided two-conductor gray cable to one of the two sets of normally-open-contacts, on the switch installed in the previous step as shown in diagram H. If the press is also equipped with a Tempest® dryer and the switch is already installed, use the set of normally-open-contacts not being used by the dryer. The wire with the flag (right angle) connector is for the common terminal on the switch. Route the cable through the press and to the PowderPro® control box on the NOPS. Plug the cable into the appropriate receptacle on the control box. Use the provided tie wraps to secure the cable as necessary.

9

INSTALLATION

10

Set the provided pump on the floor on the NOPS of the press. Plug the cable from the pump into the appropriate receptacle on the PowderPro® control box. Connect the hose from the pump to the barbed fitting in the hose coming out of the control box.

11

Plug the PowderPro® power cord into a standard 115 VAC outlet. The unit will draw a maximum of 3 amps.

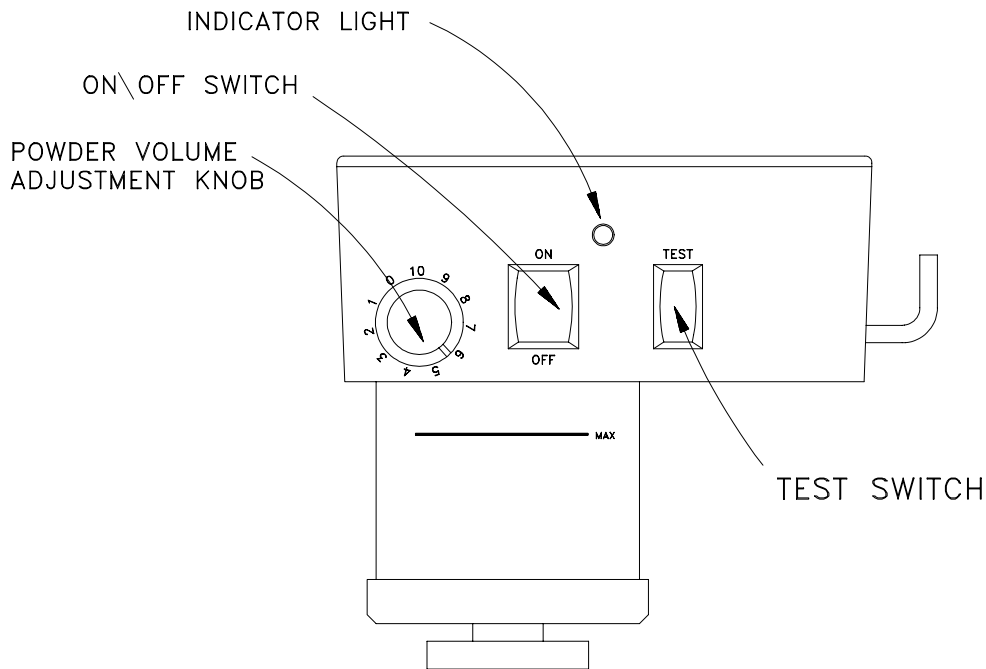
12

Restore the power to the press. Feed some paper with the press on impression. Did the green light on the PowderPro® control box come on? If the green light did not come on, adjust the switch activated by the impression solenoid. Loosen the nuts and slide the switch mounting bracket toward the spring pin on the activation arm.

Replace the covers on the press, then proceed to the "Operation and Maintenance" section for proper pump adjustment and operation.

11

OPERATION AND MAINTENANCE



POWDER PRO® CONTROLS

VOLUME ADJUSTMENT KNOB

Adjusts the amount of spray powder with "0" the minimum and "10" the maximum.

ON/OFF SWITCH

When switched to the "MANUAL PUMP ON" position the pump will come on to allow for spray volume setting. When switched to the "NORMAL OPERATION" position, the system is armed and will spray only when the press goes on impression. The center position is off.

INDICATOR LIGHT

This light is illuminated only when the unit is actually spraying. The light will go on and off as sheets pass under the spray nozzles.

TEST SWITCH

Use this switch for setting powder volume when not printing. With the on/off switch set to "MANUAL PUMP ON," push the test switch to visually see the amount of powder being sprayed. Adjust if necessary.

OPERATION AND MAINTENANCE

INITIAL SETTINGS

The initial setting for the powder volume adjustment on an average job is “5”. If more powder is required than is available at a setting of “10” you need to adjust the pump. If less powder is required than is available at a setting of “0” you also have to adjust the pump. So that you have a wide range of powder volume adjustment available for different jobs you want your “normal” setting for average jobs to be somewhere in the range from “4” to “6”, otherwise you need to adjust the pump.

PUMP ADJUSTMENT

Powder volume range is adjusted by the outlet pressure of the pump. Locate the adjustment knob on the pump near the outlet hose. Loosen the locking knob and turn the adjustment knob clockwise to increase the pressure for more powder. Turn the knob counter clockwise to decrease pressure for less powder. Set the correct pump pressure as follows:

1. Set the ON/OFF switch on the PowderPro® control box to the "MANUAL PUMP ON" position.
2. Set the powder volume adjustment knob to "10".
3. Hold the "Test" switch "On" while looking at the spray nozzles in the delivery.
4. Have someone slowly adjust the pressure on the pump until the powder is barely visible. A powder setting of "10" with visible powder in the delivery is more than enough powder. Consequently, a setting of "5" results in no visible powder but sufficient powder for most jobs.

If powder is visible at the "5" setting then too much powder is being sprayed. Return to step 3 and reset the pump.

5. Tighten the locking knob on the pump adjustment.

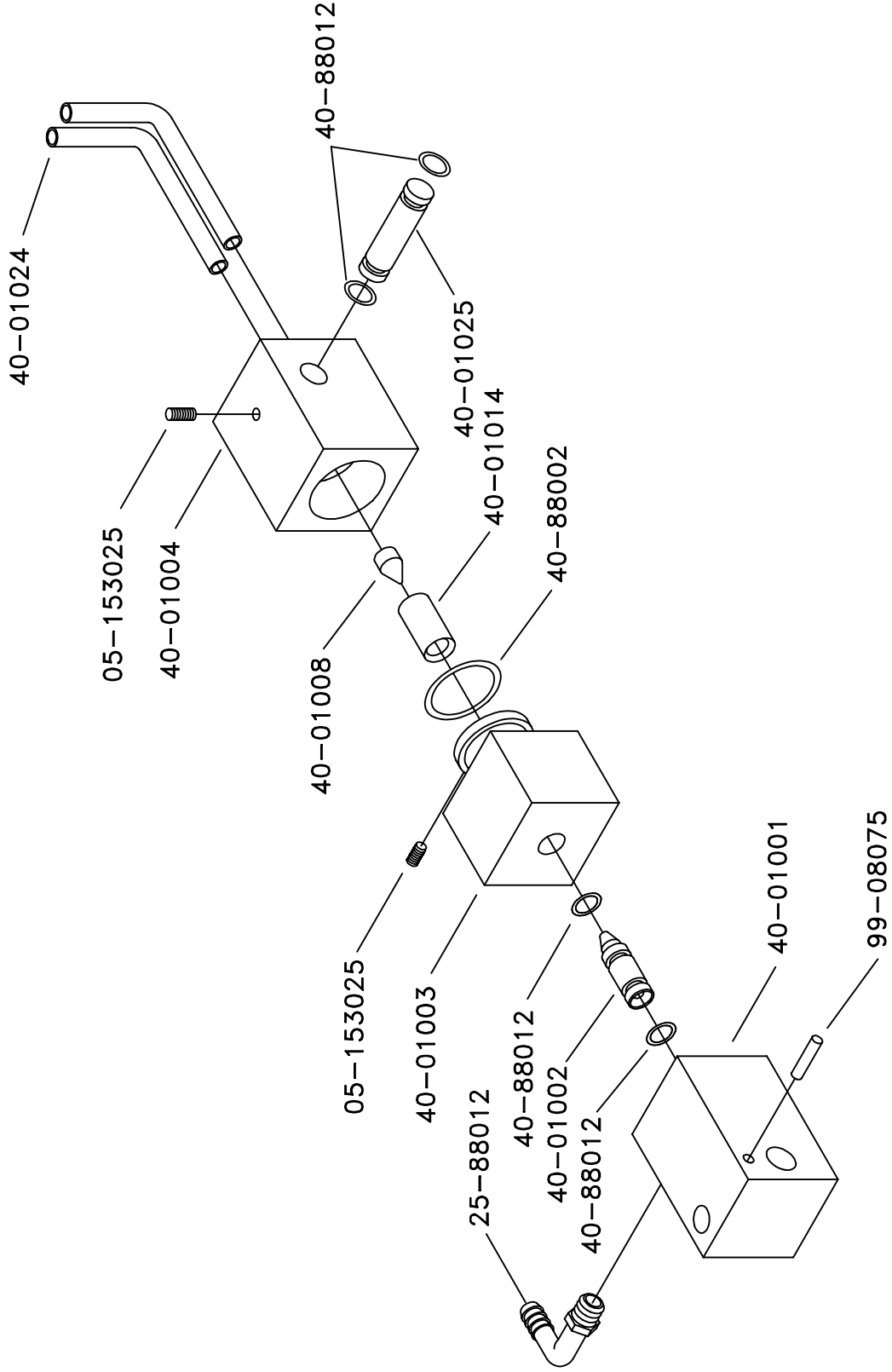
OPERATION AND MAINTENANCE

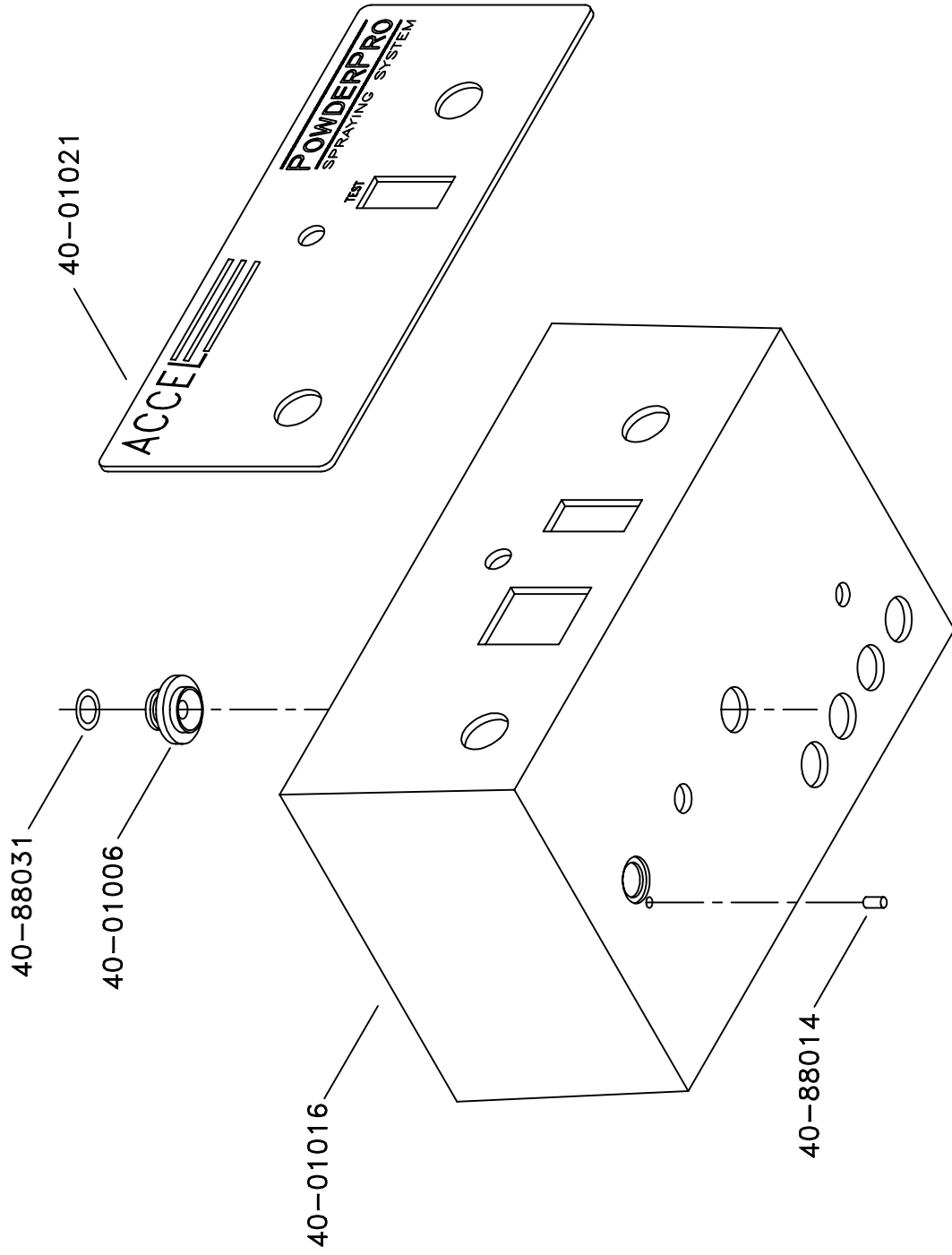
OPERATION

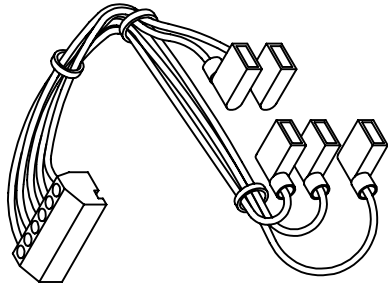
1. Fill the hopper with an intermediate grain (20 -25 micron) powder, available from Accel, up to the "MAX" line on the hopper.
2. Place the "ON/OFF" switch in the "NORMAL OPERATION" position. Sprayer comes on and off automatically when the press is on or off impression.
3. Adjust the powder volume adjustment knob as necessary.

MAINTENANCE

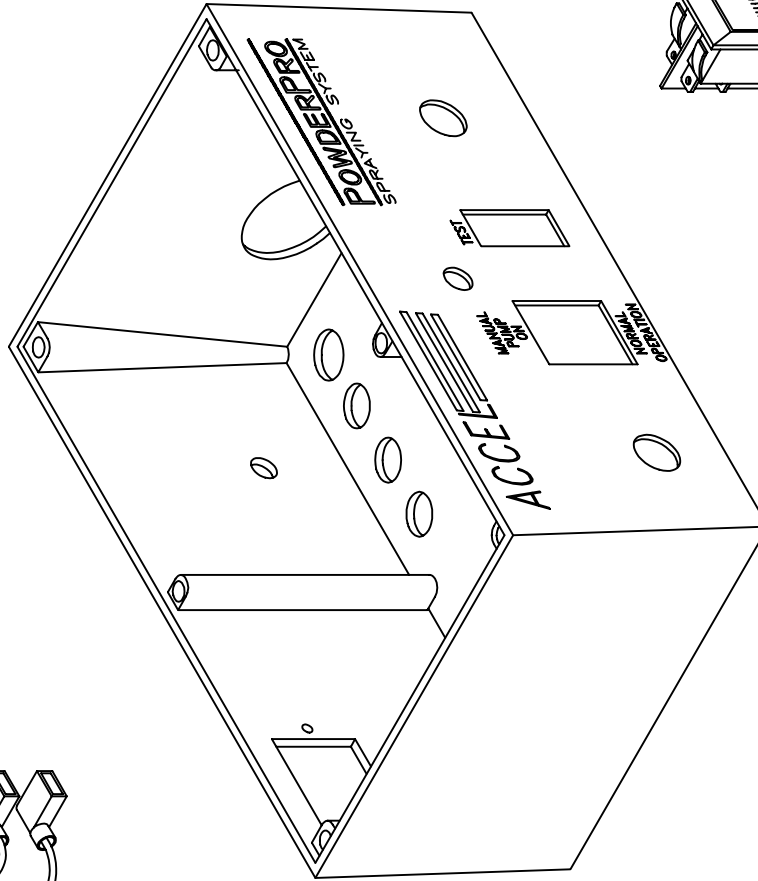
1. Clean the filter on the pump once a week, blowing it clean with compressed air.
2. Remove powder that may accumulate on the bottom of the spray nozzles daily.
3. Never use solvents containing oil when cleaning any part of the sprayer.
4. Use compressed air only if your compressor is equipped with a proper in-line dryer. Otherwise, use canned air. Moisture in the sprayer affects its performance.





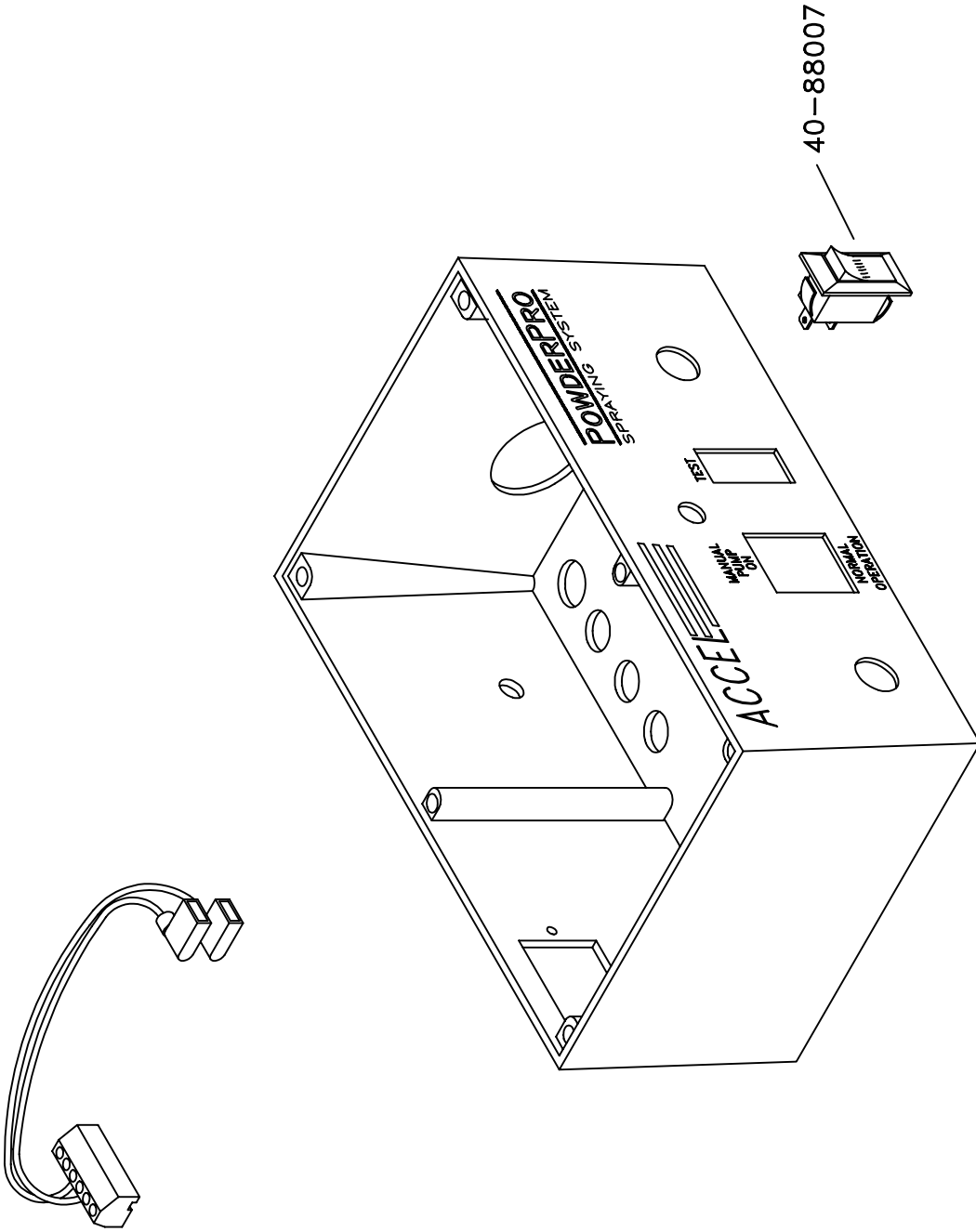


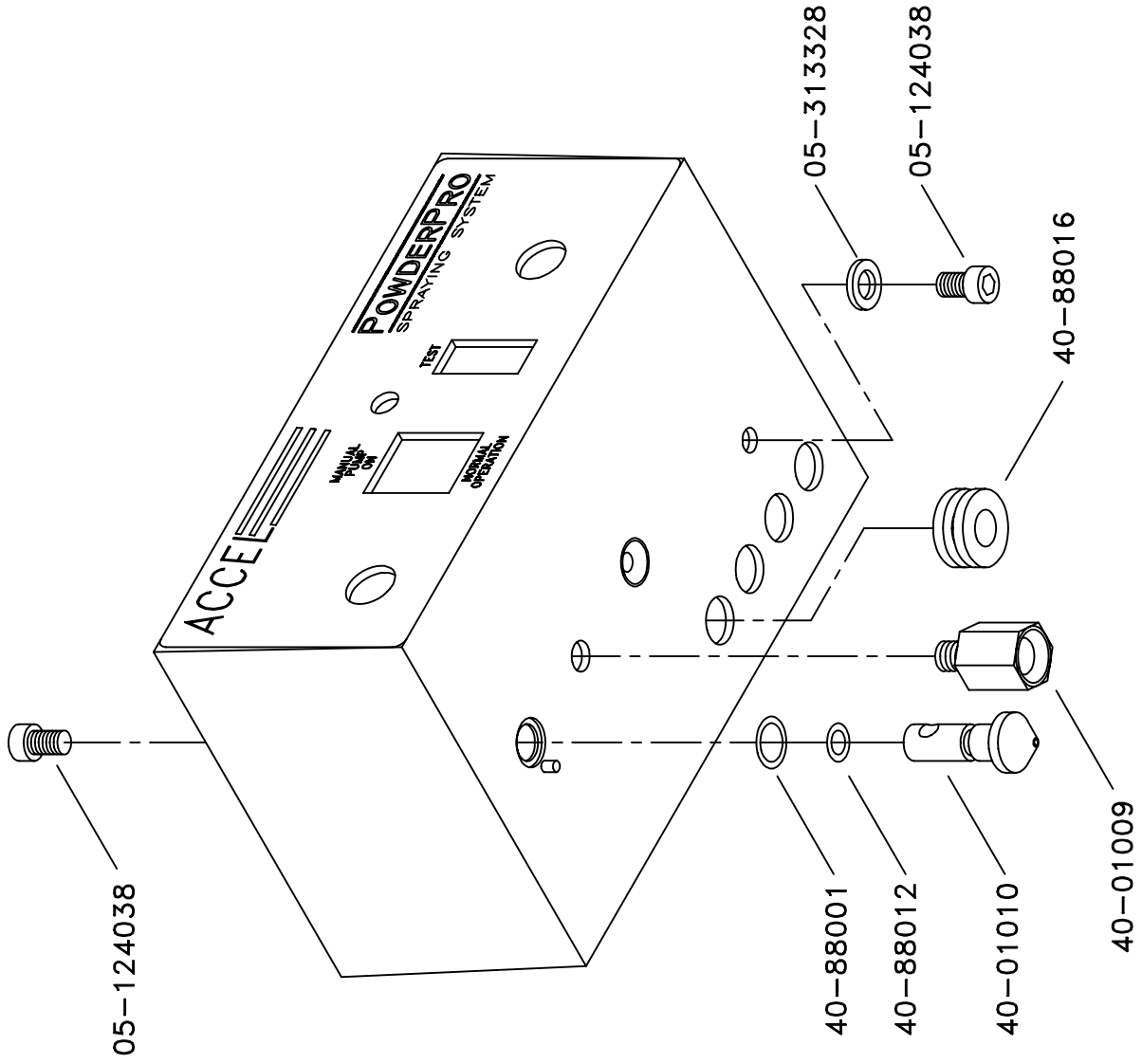
WIRE COLOR	SWITCH POSITION NO.
RED	12
ORANGE	11
BLUE	13
WHITE	24
BLACK	26

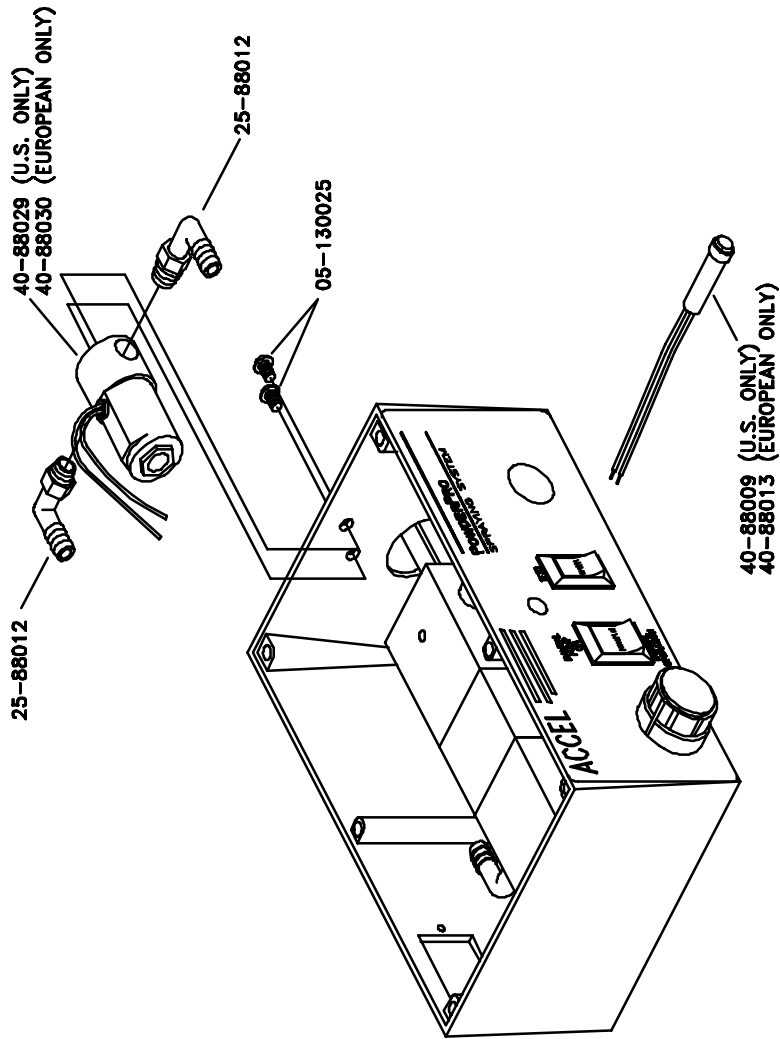


40-88042

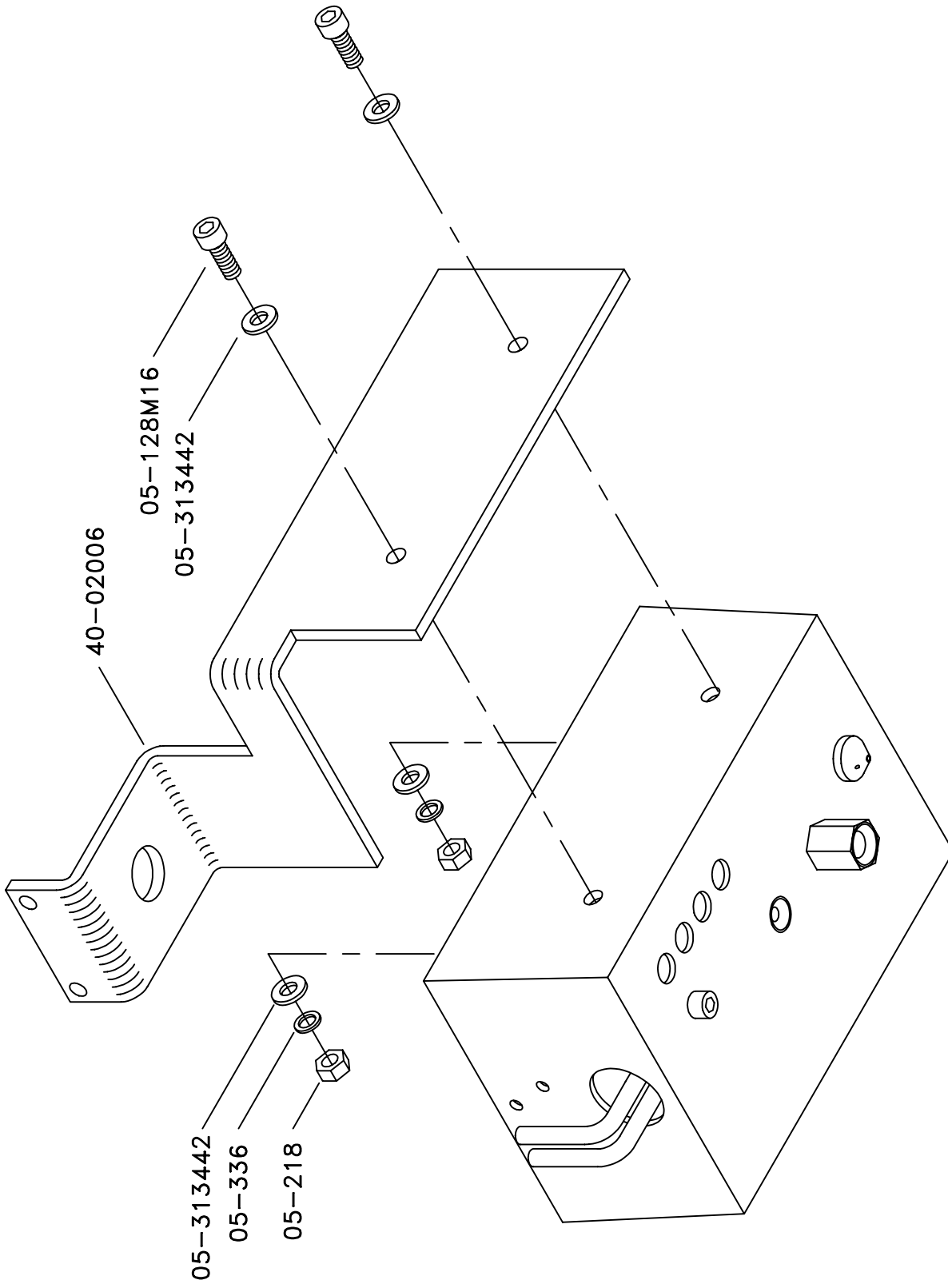


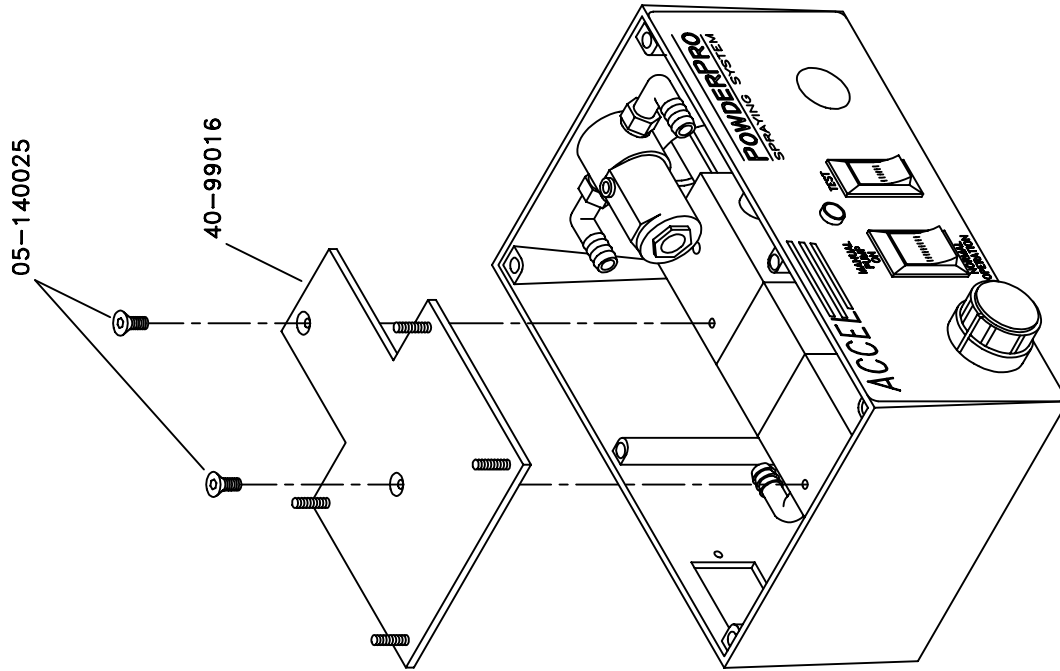


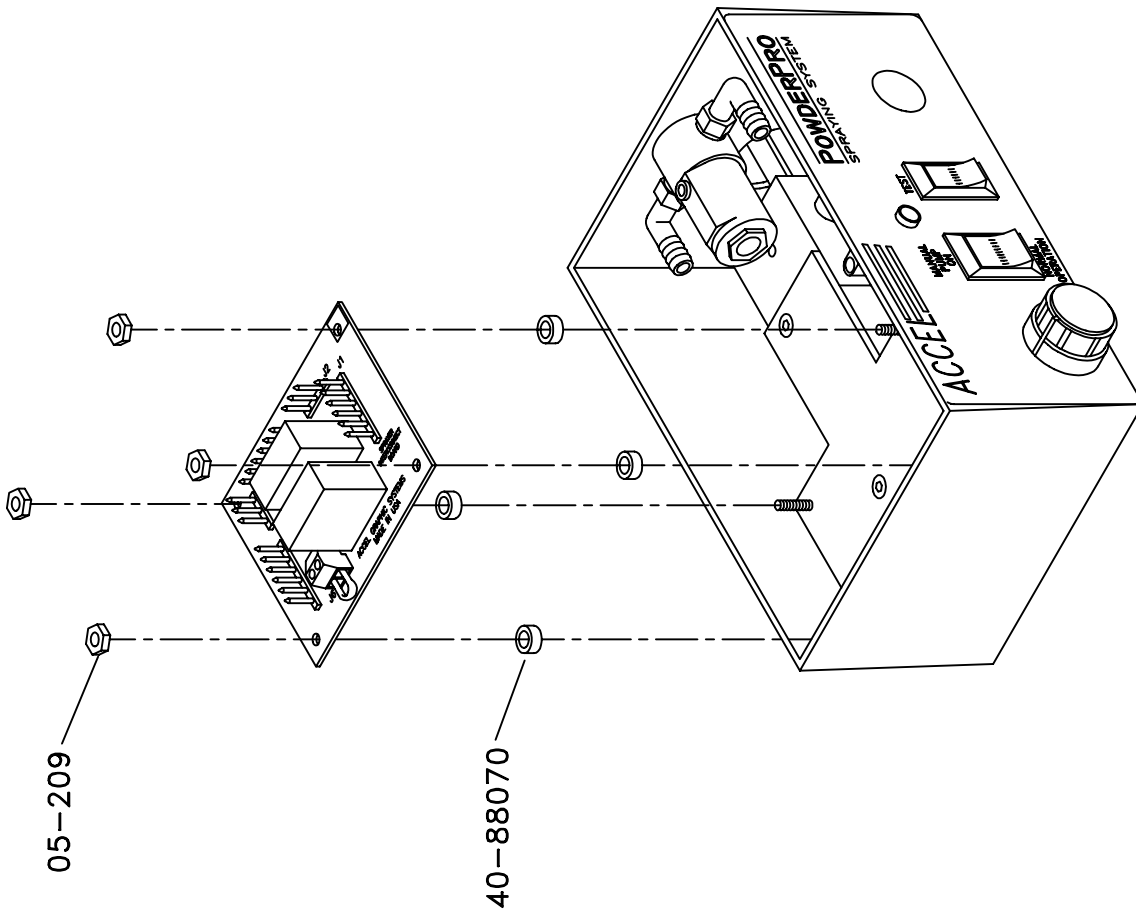


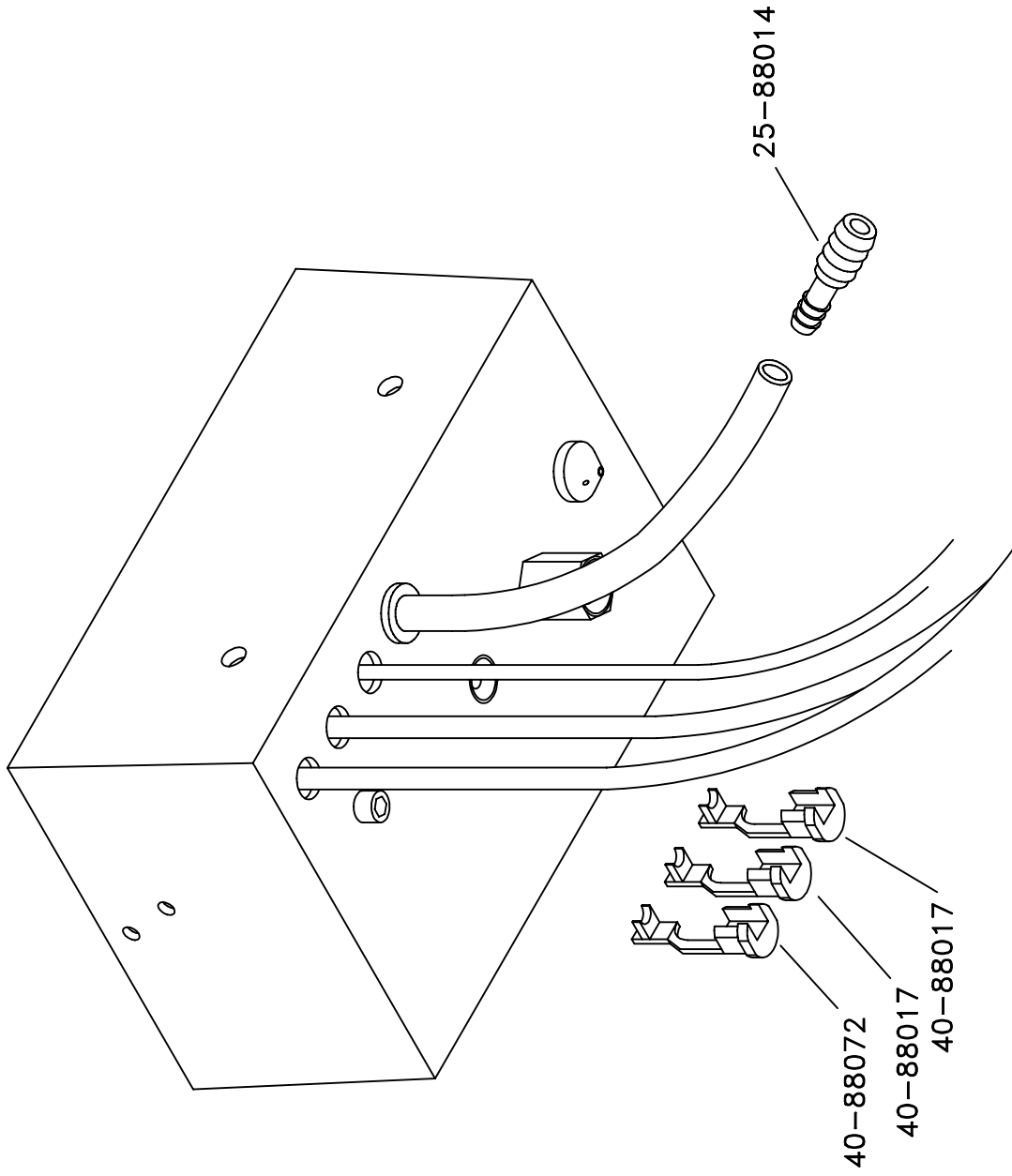


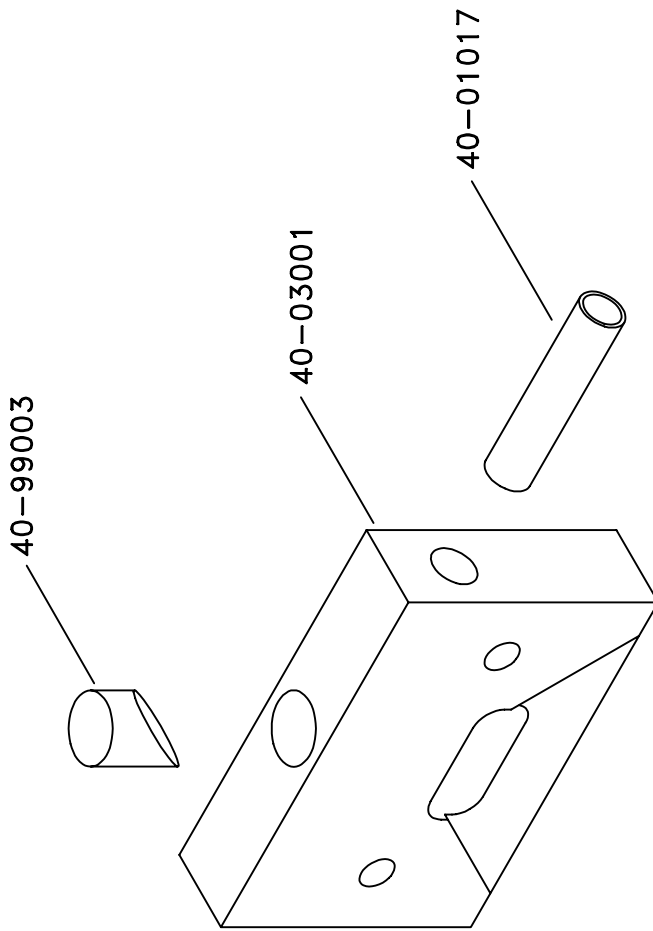
RS34P47, 11-5-97



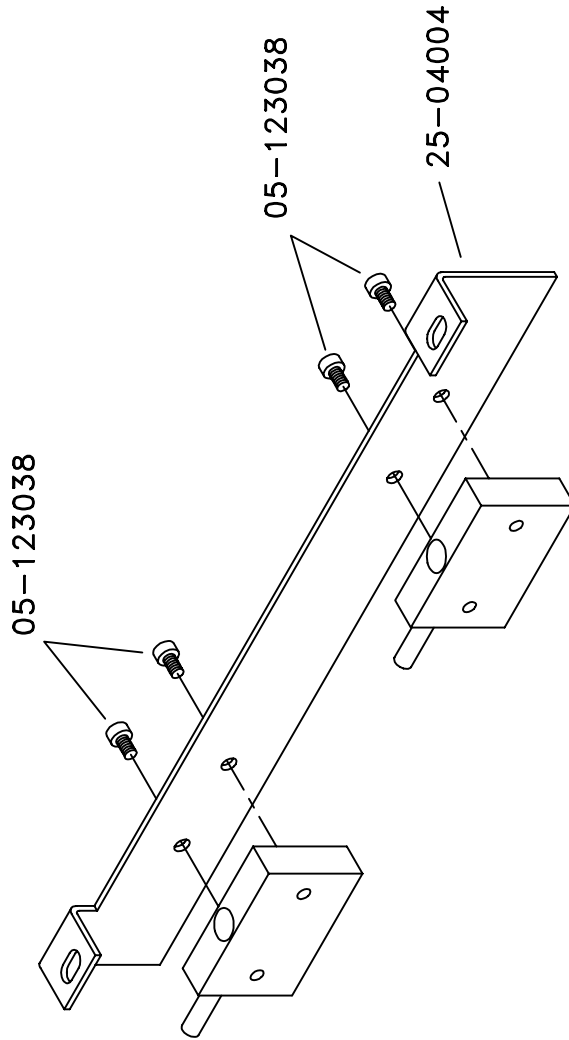




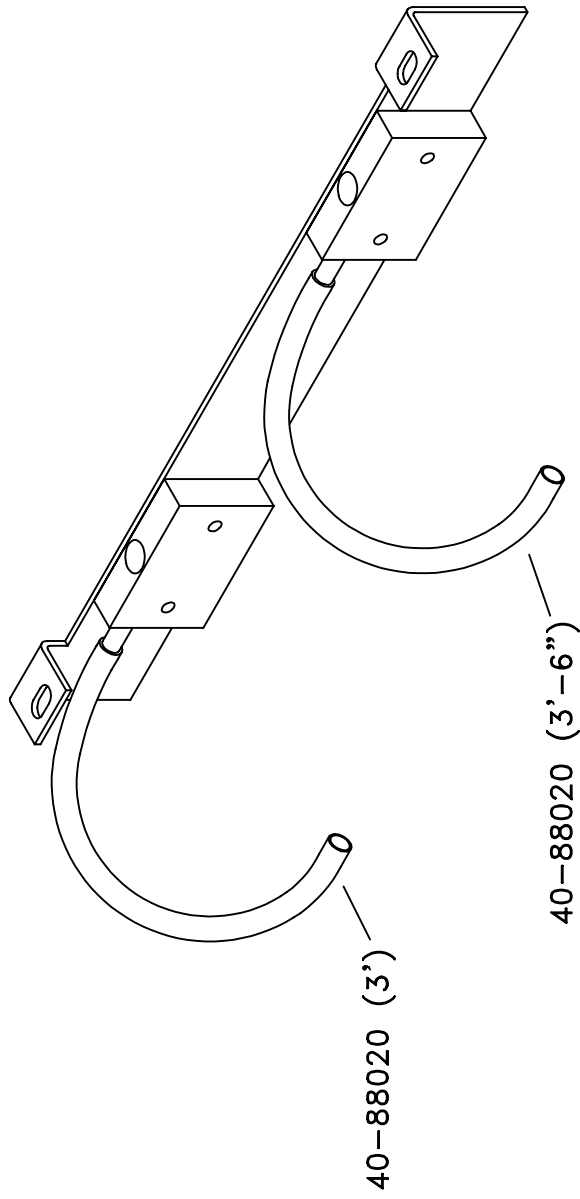


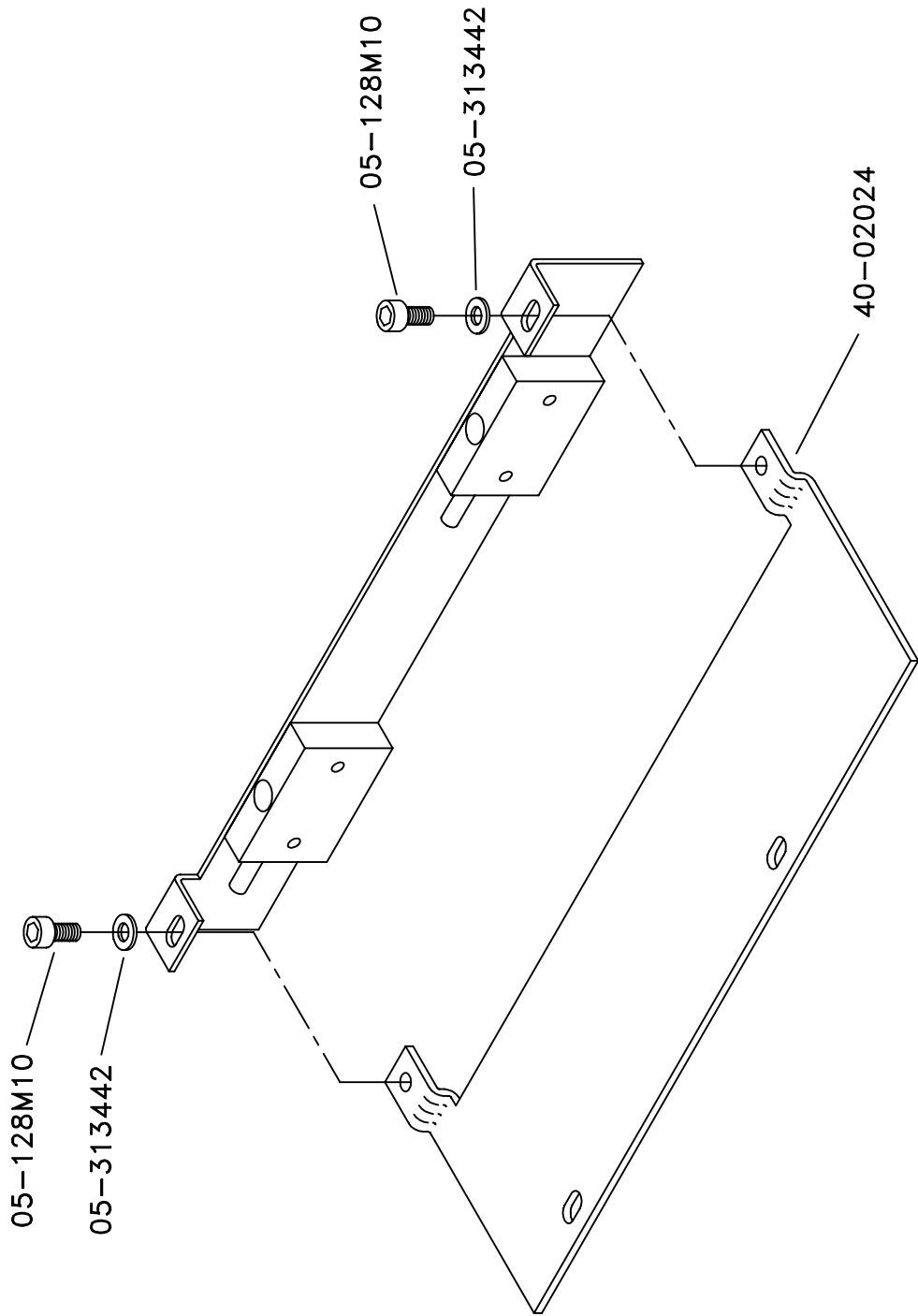


RS34P17, 6-13-96

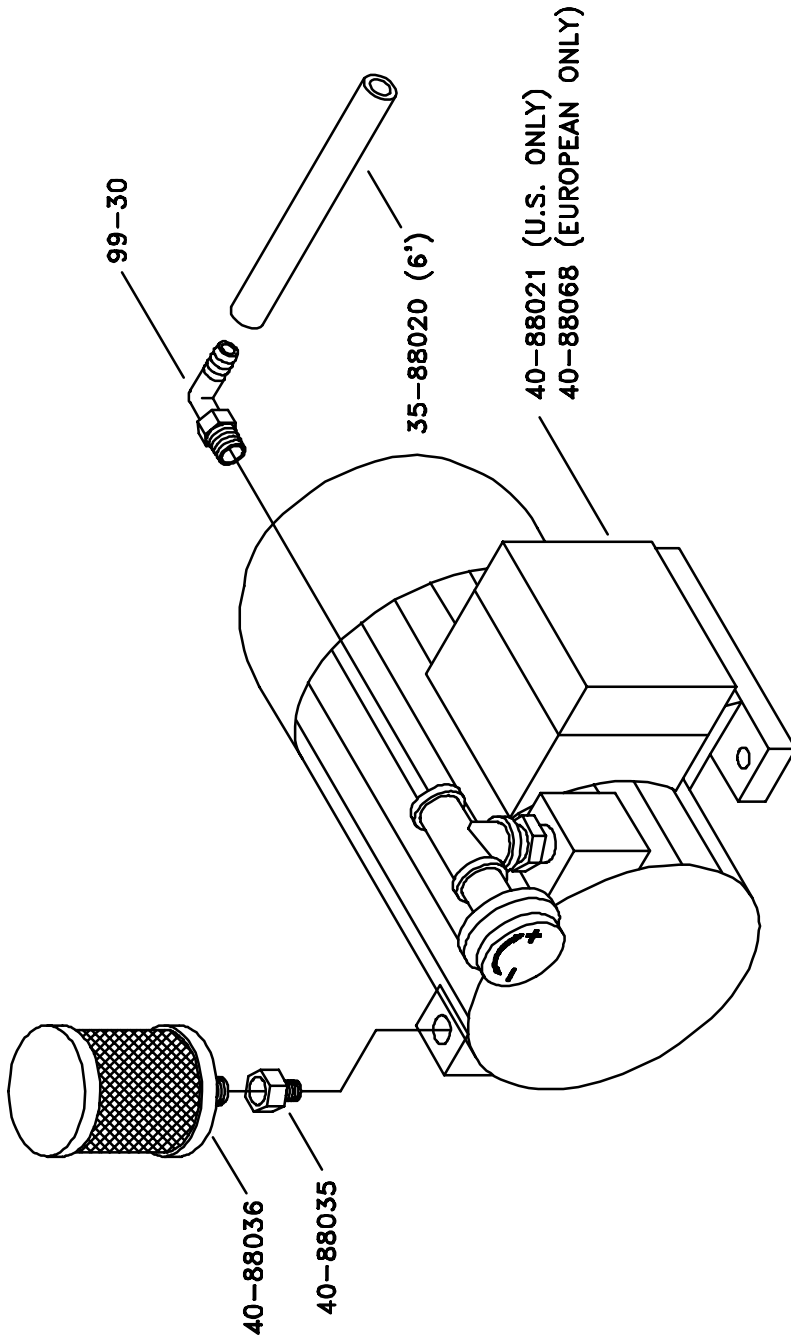


RS34P15, 6-13-96

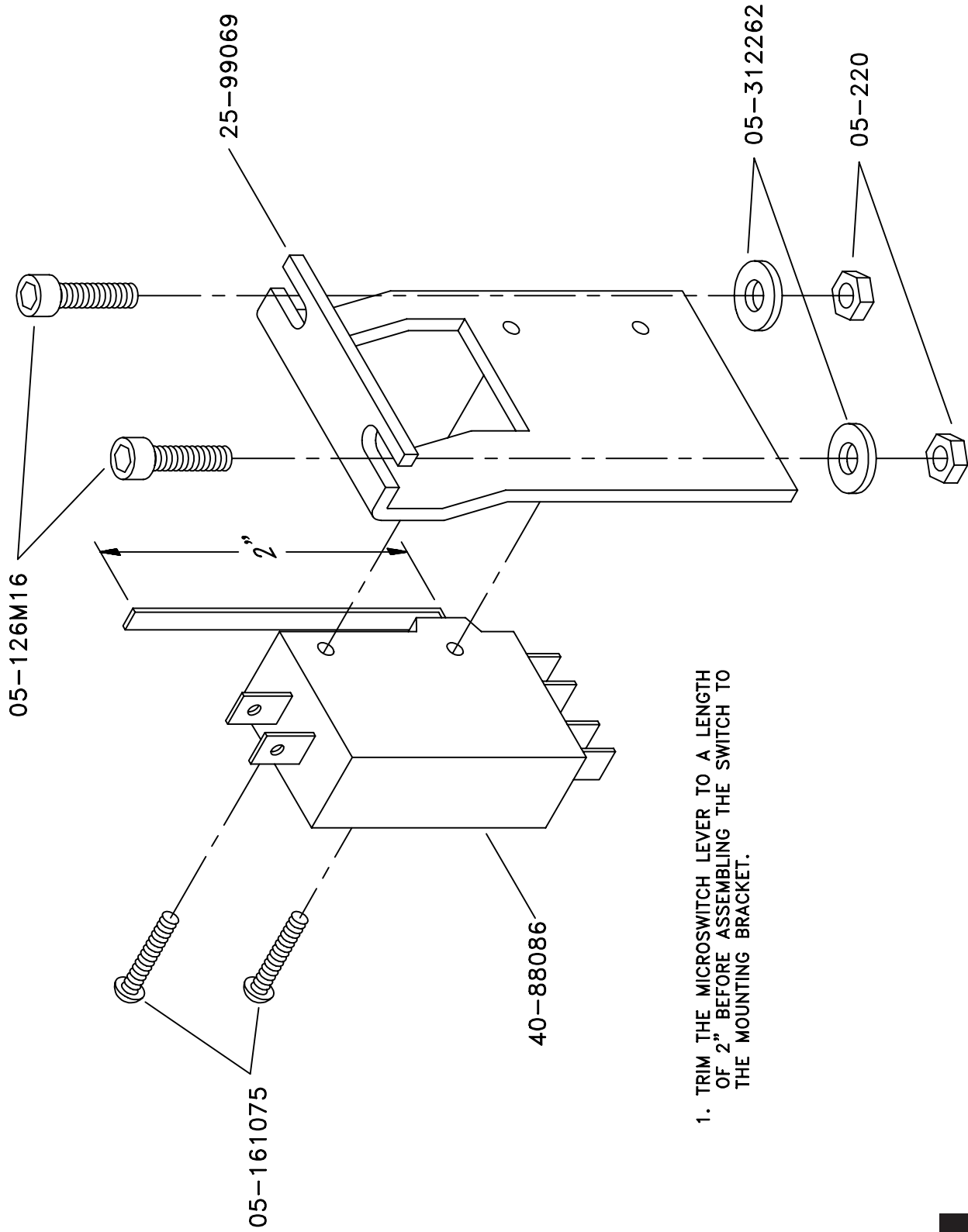




RS34P16, 6-13-96



RS34P18, 11-5-97



1. TRIM THE MICROSWITCH LEVER TO A LENGTH OF 2" BEFORE ASSEMBLING THE SWITCH TO THE MOUNTING BRACKET.

ACCEL  [®]
Graphic Systems

11103 Indian Trail, Dallas, TX 75229 Phone 214-484-6808, Fax 800-365-6510
<http://www.dallas.net/~accel>