

PowderPro[®] Sprayer

Installation Instructions

Hamada 611

ACCEL  [®]
Graphic Systems

GENERAL INFORMATION

**ATTENTION
POWDERPRO®
OWNER!**

Accel Graphic Systems provides parts and service through its authorized distributors and dealers. Therefore, all requests for parts and service should be directed to your local dealer.

The philosophy of Accel Graphic Systems is to continually improve all of its products. Written notices of changes and improvements are sent to Accel Graphic Systems' Dealers.

If the operating characteristics or the appearance of your product differs from those described in this manual, please contact your local Accel Graphic Systems Dealer for updated information and assistance.

Always update your equipment when improvements are made available, especially those related to safety.

YOUR AUTHORIZED POWDERPRO® DEALER IS:

**THE SERIAL NUMBER OF YOUR
POWDERPRO® IS:**

For technical assistance, please contact

ACCEL GRAPHIC SYSTEMS
11103 Indian Trail
Dallas, TX 75229
PHONE (214) 484-6808
FAX (800) 365-6510
E-MAIL accel@dallas.net
WEB SITE www.accelgraphicsystems.com

PowderPro® is covered by U.S. Patents Pending



INSTALLATION

1

Disconnect the electrical power to the press.

2

Remove the NOPS delivery side cover and the OPS main press covers.

3

Remove the original powder spray system if so equipped. Use the provided closed end splice connectors to terminate the original solenoid wires.

5

Diagram A

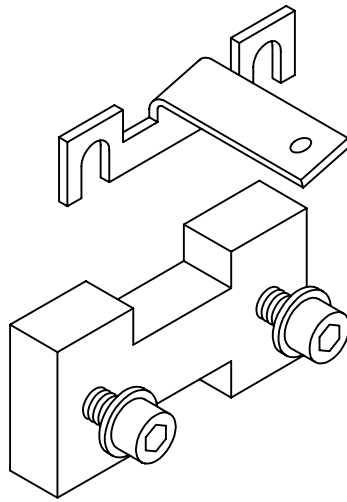


Diagram B

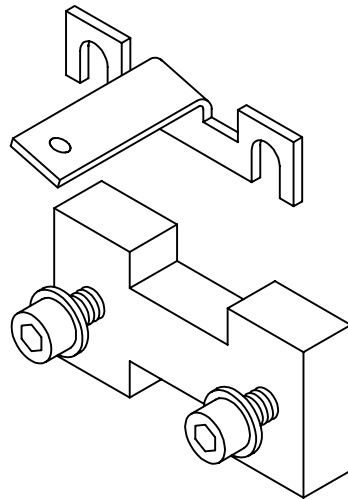
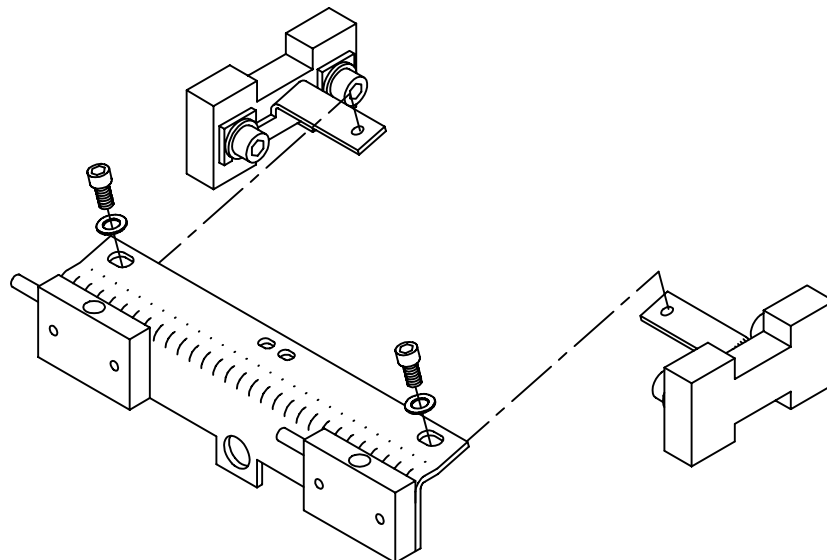


Diagram C



INSTALLATION

4

Loosen the two bolts on the NOPS that secure the chain tensioner inside the delivery. Back the bolts out at least 1/4". Drop the NOPS spray bar mounting brackets over the bolts as shown in diagram A. Tighten the bolts.

5

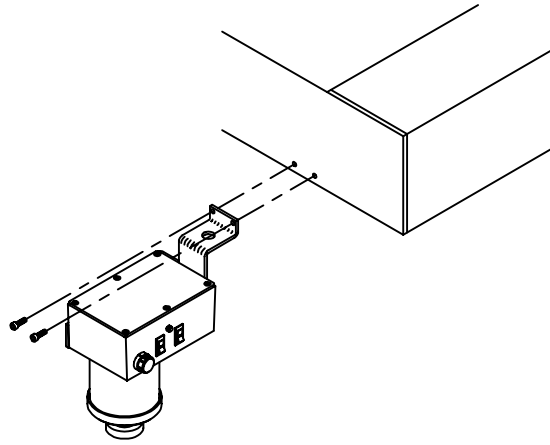
Repeat the previous step for the OPS as shown in diagram B.

6

Attach the spray head assembly to the mounting brackets using the provided hardware as shown in diagram C. Route the hoses through the hole under the tie bar in the NOPS press frame. If the press was originally equipped with a sprayer this is the same hole that the factory powder spray hoses went through. Use the provided tie-wraps to secure the hoses away from any moving parts in the delivery.

7

Diagram D



INSTALLATION

7

Rotate the press by hand to make sure that the grippers do not come into contact with the spray bar.

8

Using the provided hardware secure the PowderPro control box to the existing holes in the NOPS delivery frame as shown in diagram D. If the press was originally equipped with a sprayer then these are the same holes that mounted the original hopper assembly.

9

Route the hoses coming from the spray bar and connect them to the tubes coming out of the PowderPro control box. The hoses are longer than necessary so you will need to trim them once you have them routed correctly.

9



INSTALLATION

NOTE: The next three steps involve the electrical connections for the PowderPro. If you are unfamiliar with or unsure about any of these connections either refer to the electrical schematics provided with the press or consult with someone that is more familiar with the electrical workings of the press.

10

Using alcohol or blanket wash clean a small place on the frame of the press in a open area near the electrical enclosures. Remove the backing from the tape on the back of the provided relay and adhere it to the frame. Locate the impression solenoid mounted on the OPS press frame. Attach the two provided t-tap splice connectors to the wires on the solenoid. Connect the provided short cable assembly to the t-taps (the end of the cable with the 1/4" male connectors plugs into the t-taps), route the cable to the relay and connect it to positions A and B. Use the supplied tie wraps to secure that cable as necessary.

11

Connect the provided long two conductor cable to the appropriate mating connector coming out of the PowderPro control box. Route the cable through the press to the relay installed in the previous step. Connect the cable to positions 4 and 7 on the relay. Use the supplied tie wraps to secure the cable as necessary.

11



INSTALLATION

12

Set the provided pump on the floor on the NOPS of the press. Plug the connector on the cable to the appropriate mating connector coming out of the PowderPro control box. Connect the hose to the fitting on the hose coming out of the PowderPro control box.

13

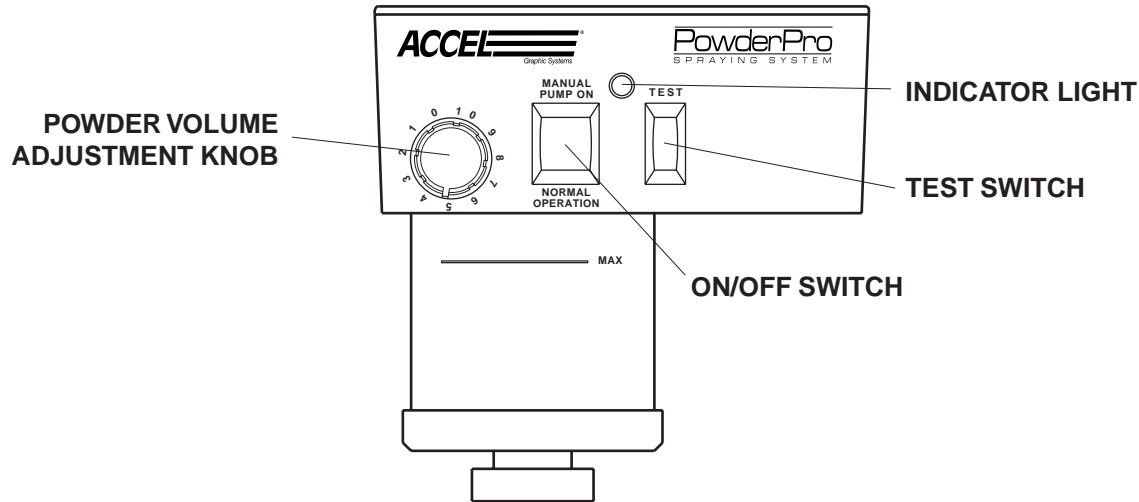
Plug the power cord coming out of the PowderPro control box into standard 110V service. The system will draw a maximum of 3 amps.

14

This completes the installation of the PowderPro spray system. Continue on to the next section for proper set up and operation procedures.

13

OPERATION AND MAINTENANCE



POWDER PRO CONTROLS

VOLUME ADJUSTMENT KNOB

Adjusts the amount of powder being sprayed with “0” the minimum and “10” the maximum.

ON/OFF SWITCH

When switched to the “MANUAL PUMP ON” position the pump will come on to allow for spray volume setting. When switched to the "NORMAL OPERATION" position, the system is armed and will spray only when the press goes on impression. The center position is off.

INDICATOR LIGHT

This light is illuminated only when the unit is actually spraying.

TEST SWITCH

Use this switch for setting powder volume when not printing. With the on/off switch set to "MANUAL PUMP ON," push the test switch to visually see the amount of powder being sprayed, adjust if necessary.

PUMP ADJUSTMENT

Before the PowderPro spray system can be used, the pump pressure must be calibrated to allow for maximum adjustment to cover a wide range of jobs. The powder volume adjustment range is controlled by the outlet pressure of the pump. Locate the adjustment knob on the pump near the outlet hose. Loosen the locking knob and turn the adjustment knob clockwise to increase the pressure for more powder. Turn the knob counterclockwise to decrease pressure for less powder. Set the correct pump pressure as follows:

OPERATION AND MAINTENANCE

1. Turn the pump on by switching the ON/OFF switch to the "MANUAL PUMP ON" position.
2. Set the volume adjustment knob to "10" (MAX).
3. Hold the TEST switch ON while looking at the spray nozzles in the delivery.
4. Have someone slowly adjust the pressure on the pump until the powder is barely visible. A powder setting of "10" with visible powder in the delivery is more than enough powder. Consequently, a setting of "5" results in no visible powder but sufficient powder for most jobs.
5. Tighten the locking knob on the pump adjustment.

INITIAL SETTINGS

The initial setting for the powder volume adjustment knob on an average job is "5." If more powder is needed than is available at a setting of "10" you will need to adjust the pump. If less powder is needed than is available at a setting of "0" you also have to adjust the pump. In order to have a wide range of powder volume adjustment available for different jobs, the "normal" setting for average jobs should be somewhere in the range from "4" to "6." Otherwise you will need to adjust the pump.

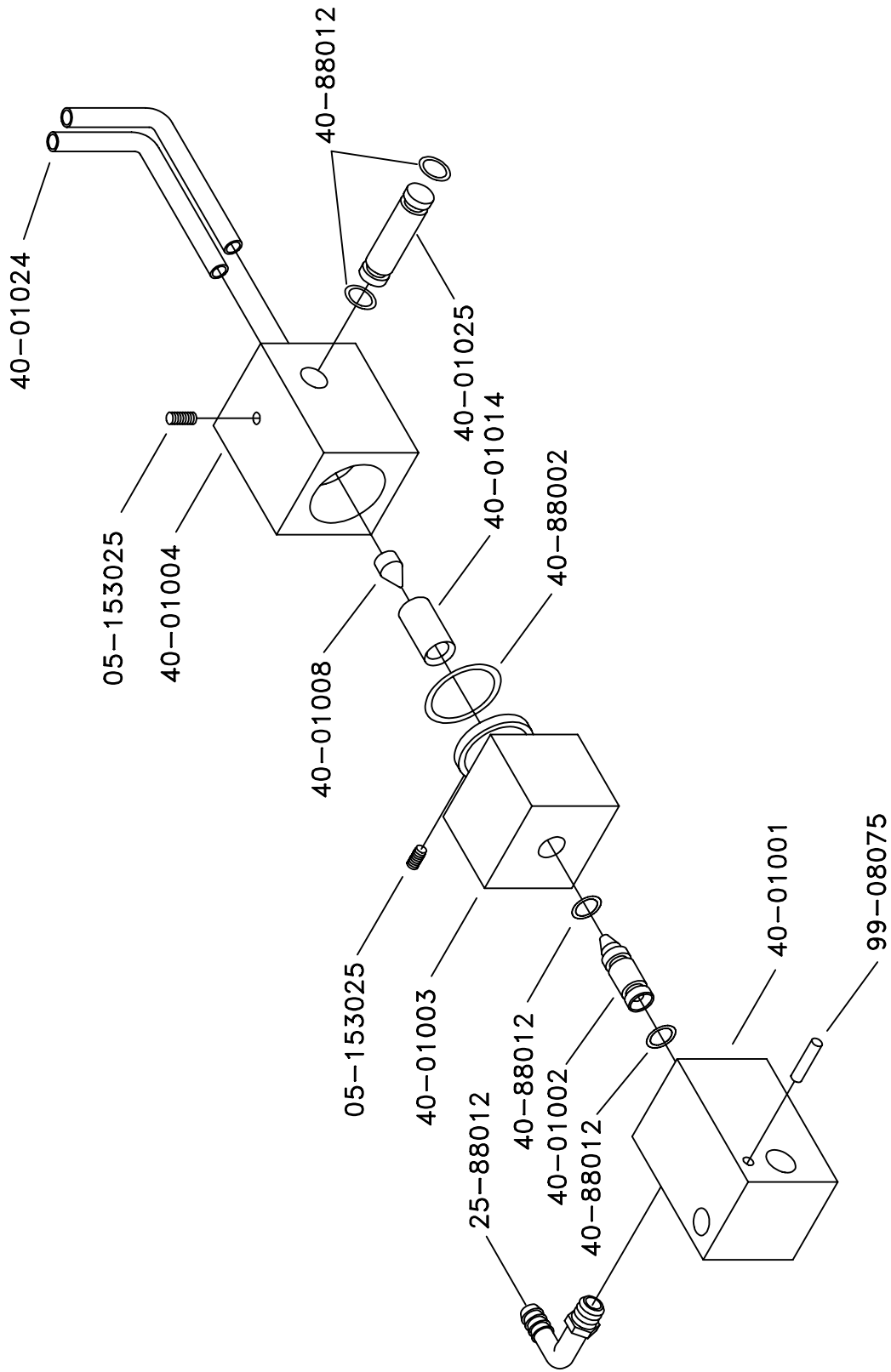
OPERATION

1. Fill the powder hopper with an intermediate grain (20-25) powder (available from Accel) up to the "MAX" line on the hopper.
2. Place the ON\OFF switch to the "NORMAL OPERATION" position.
3. Adjust the powder volume adjustment knob if necessary.
4. The powder sprayer will operate automatically when the press goes on impression.

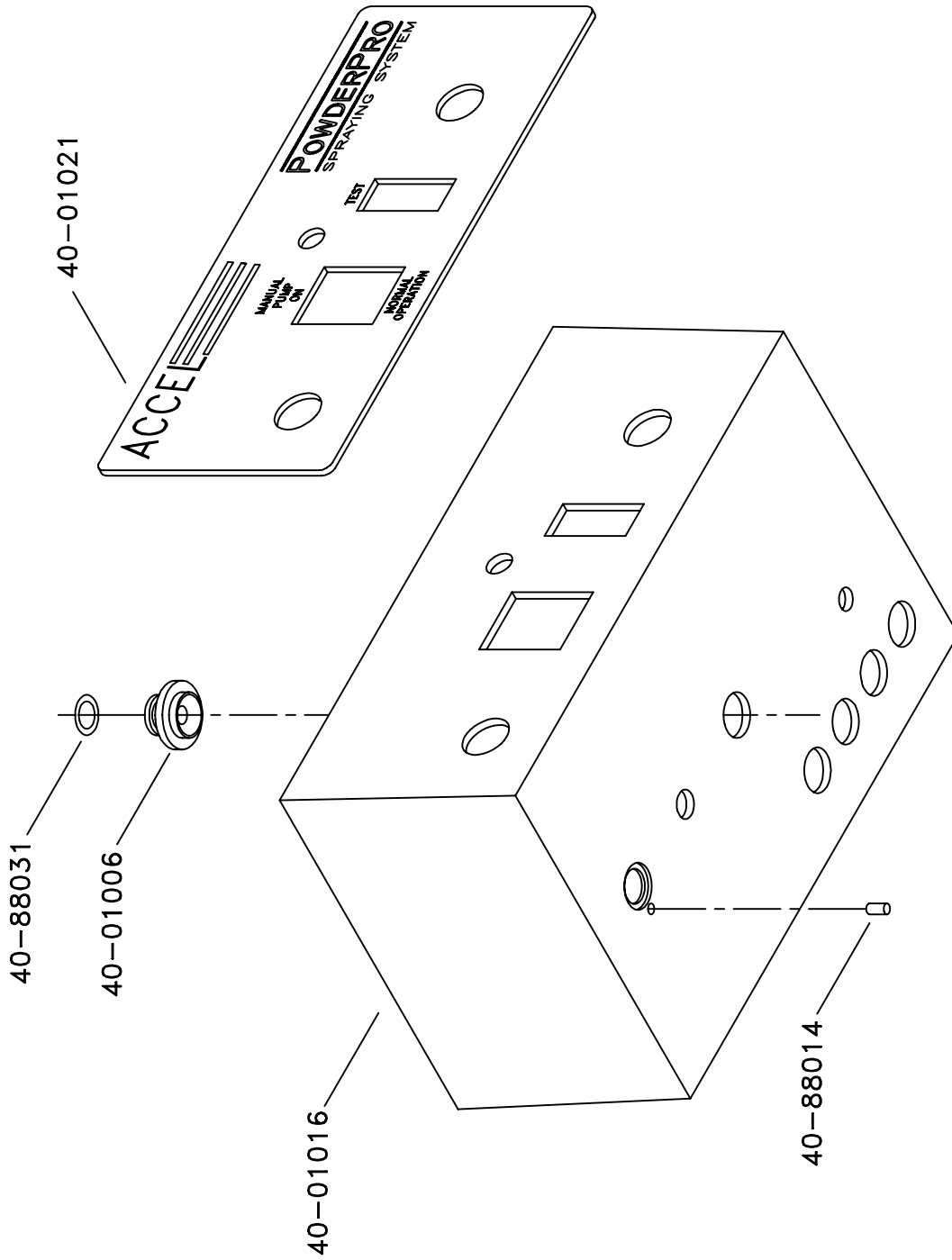
OPERATION AND MAINTENANCE

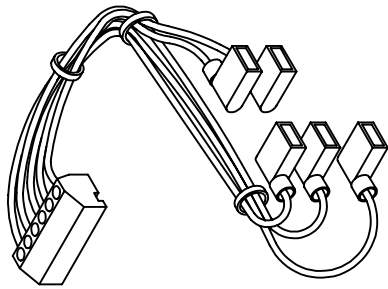
MAINTENANCE

1. Clean the filter on the pump once a week, blowing it clean with compressed air.
2. Remove any powder that may have accumulated on the bottom of the spray nozzles daily.
3. Never use solvents containing oil when cleaning any part of the sprayer.
4. Use compressed air only if your compressor is equipped with a proper in-line dryer. Otherwise, use canned air. Moisture in the sprayer will affect its performance.

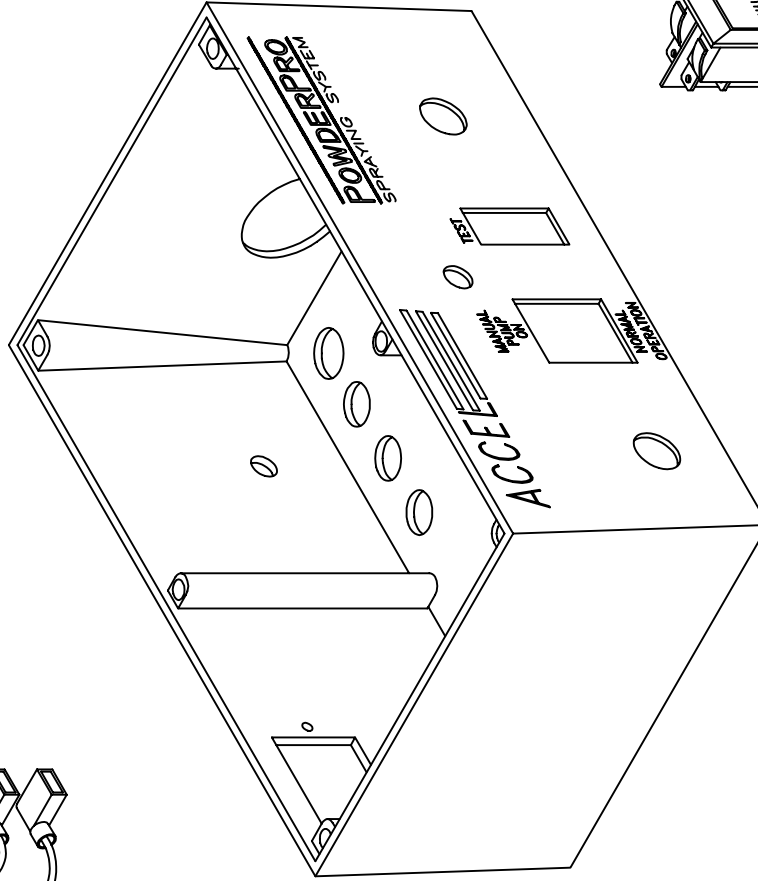


611P41, 5-10-96



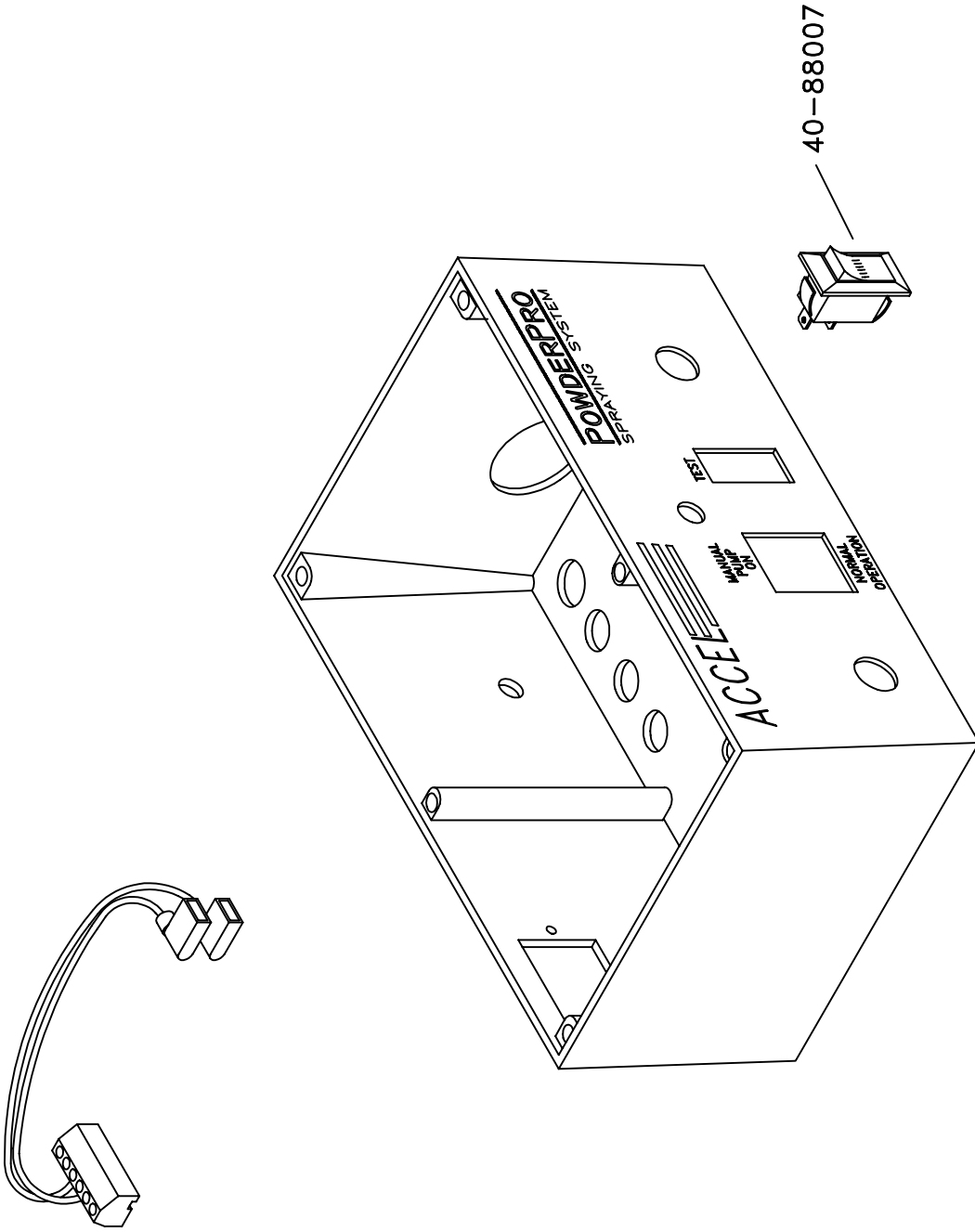


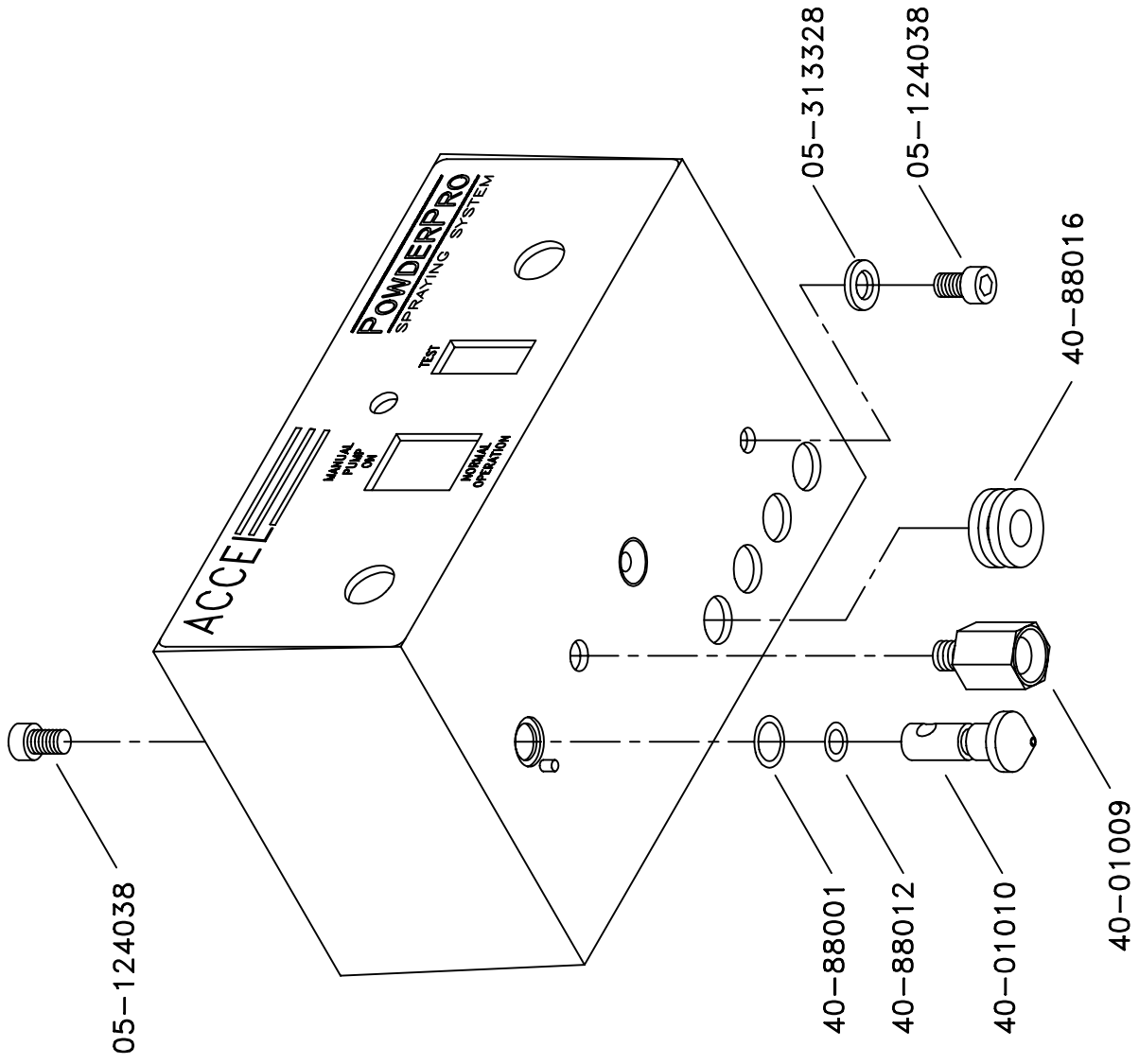
WIRE COLOR	SWITCH POSITION NO.
RED	12
ORANGE	11
BLUE	13
WHITE	24
BLACK	26

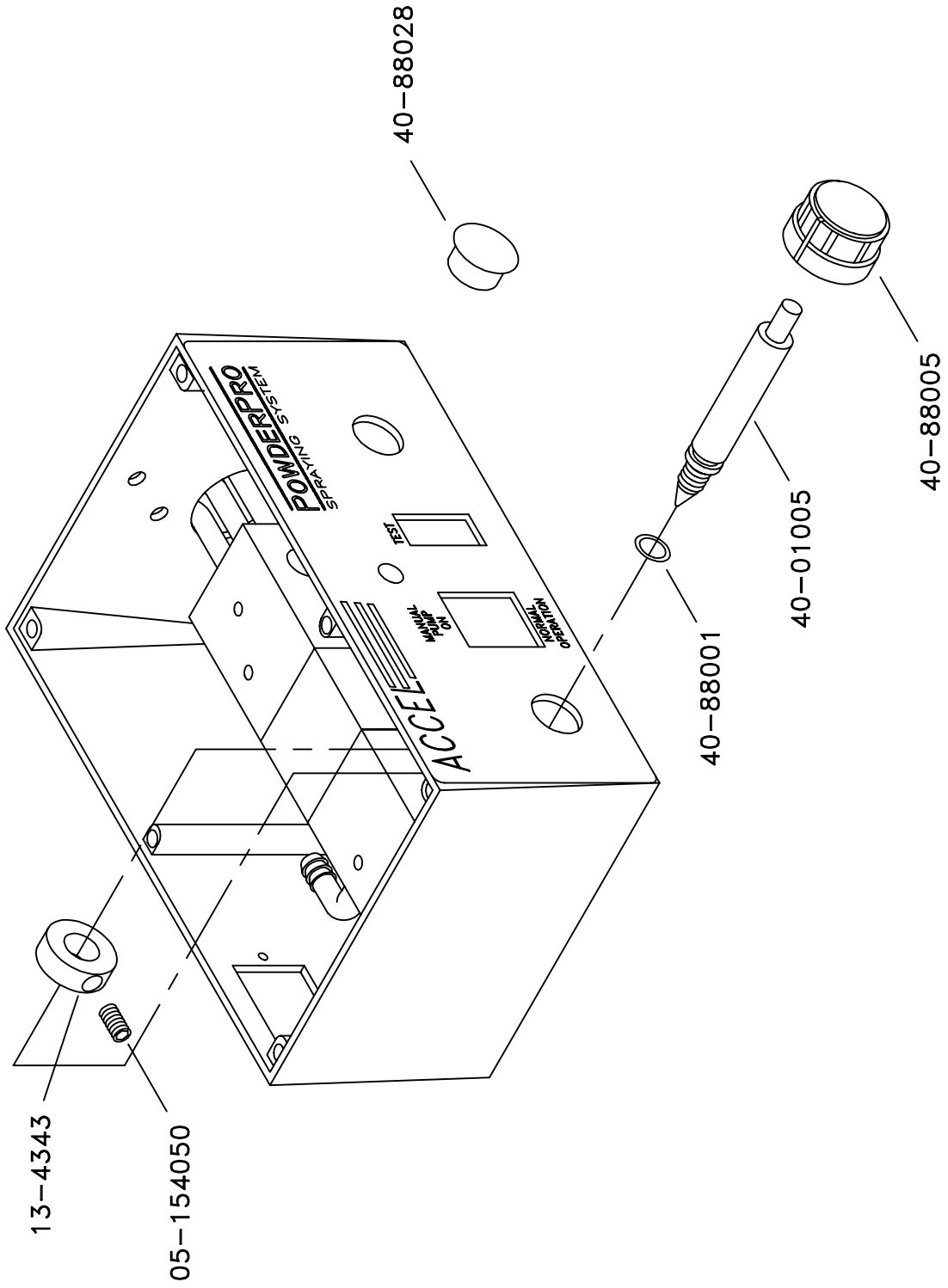


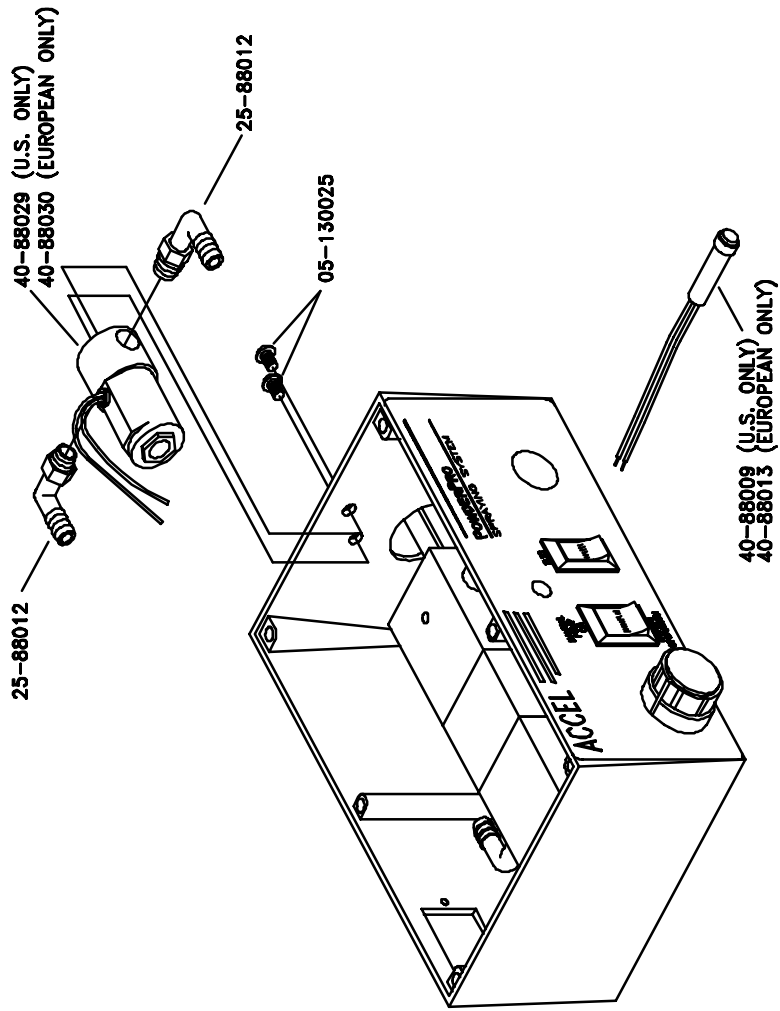
40-88042



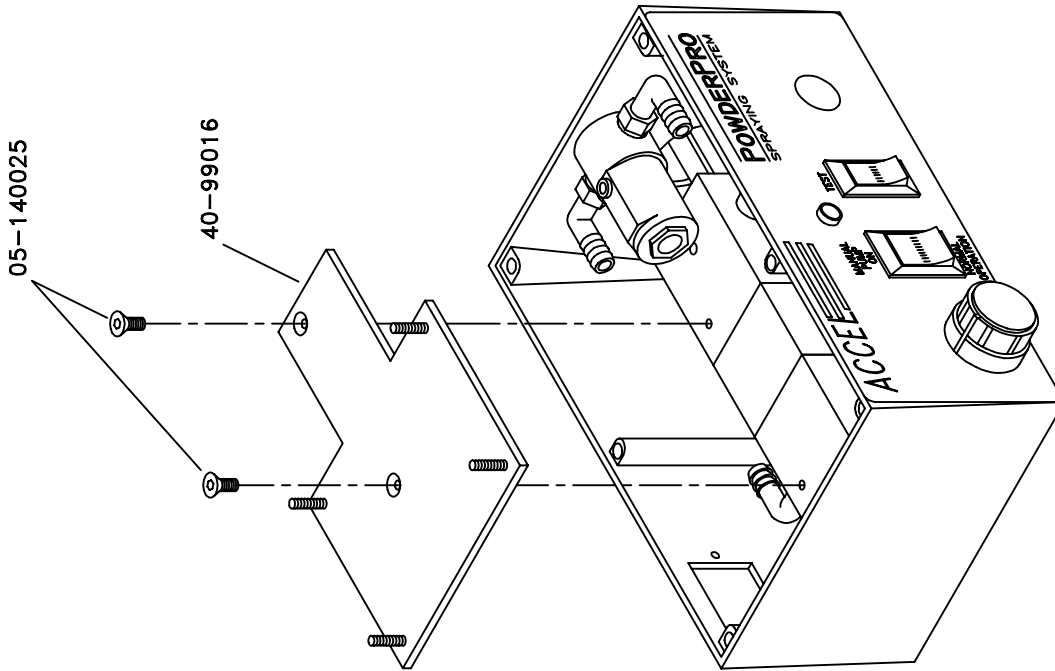


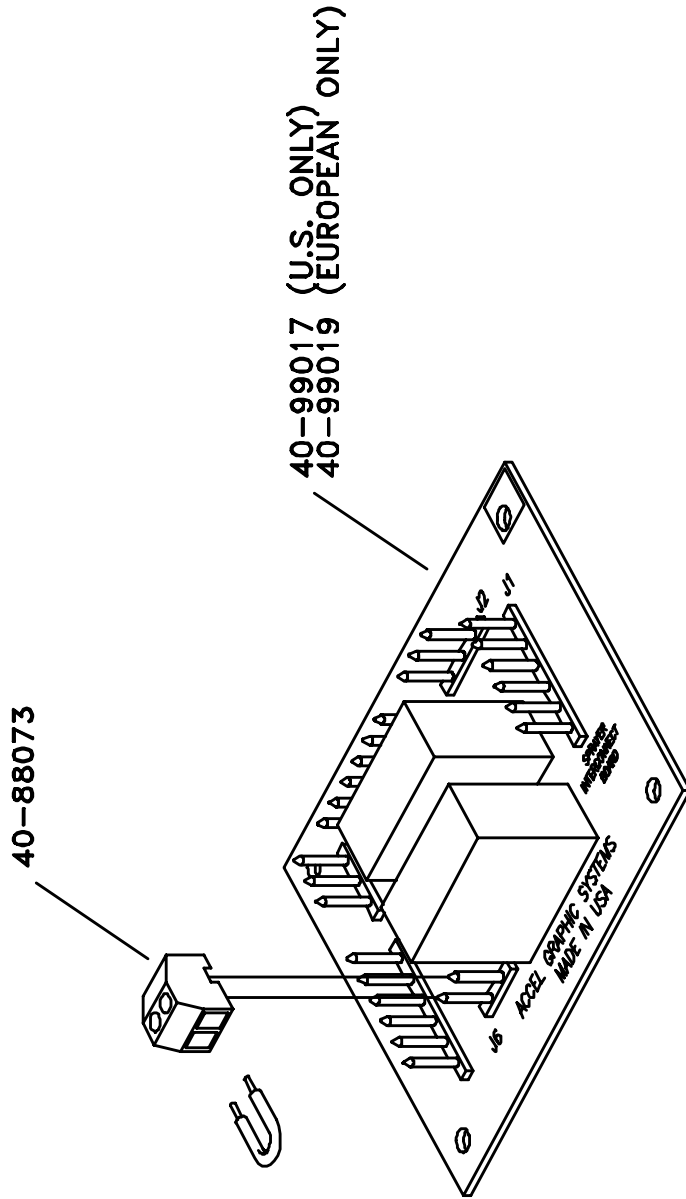


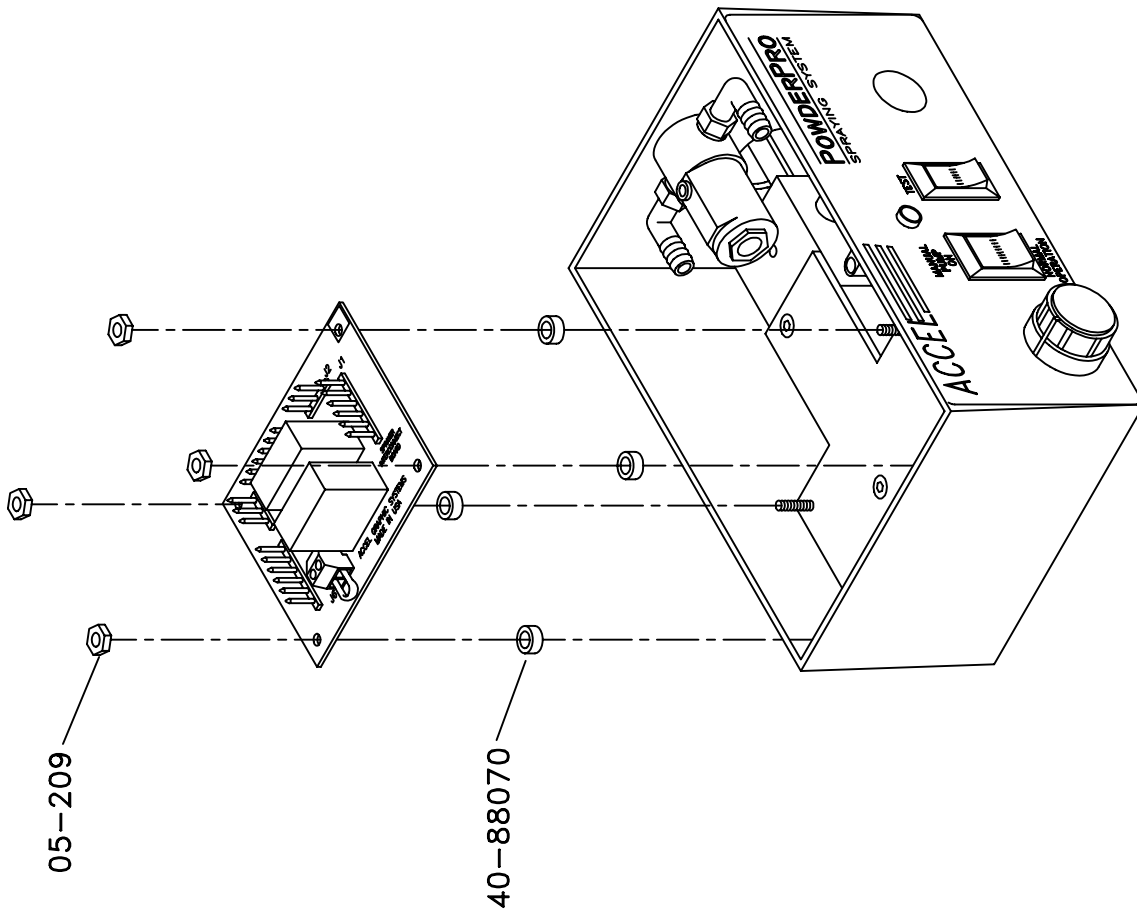


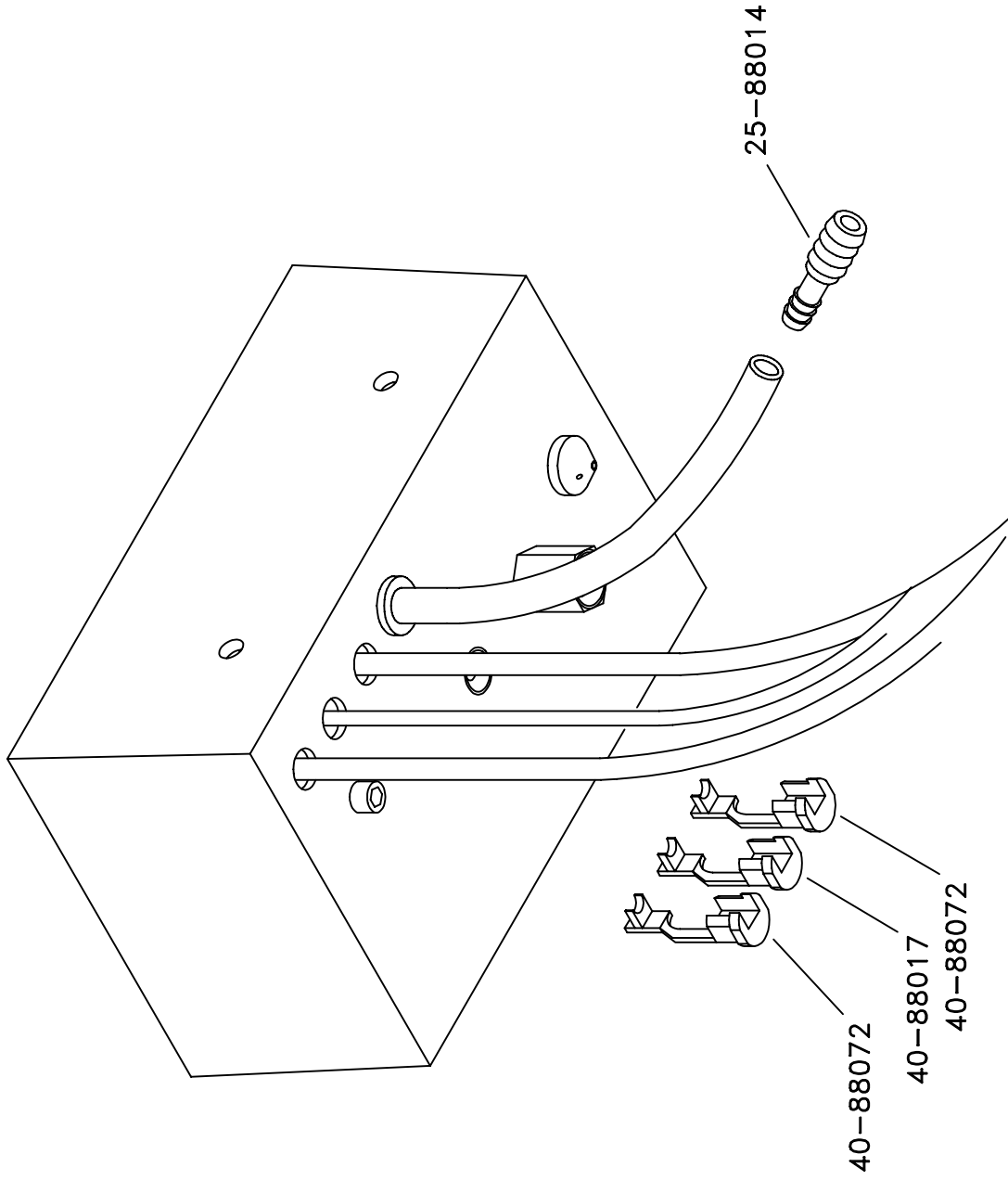


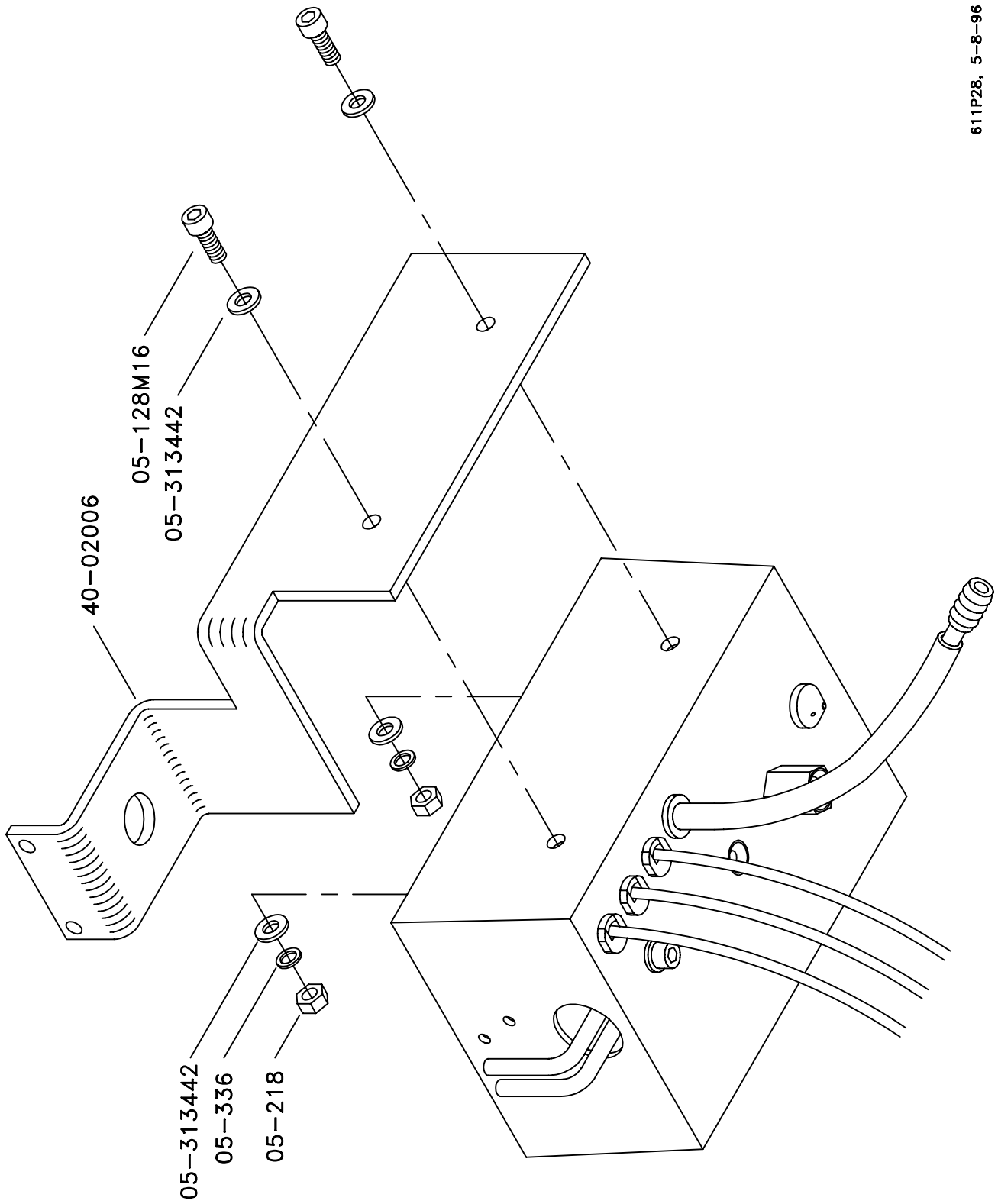
611P15, 11-5-97

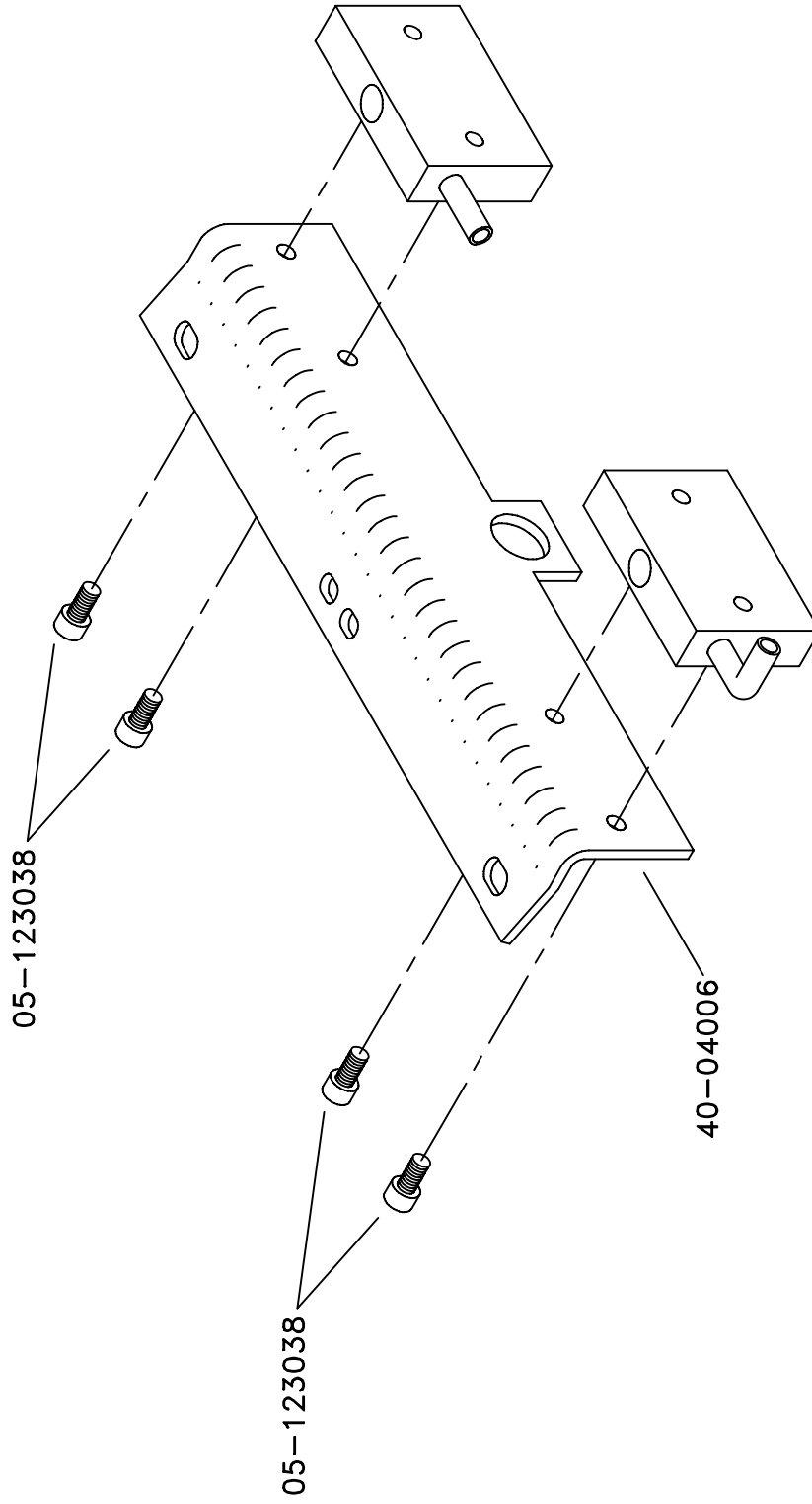




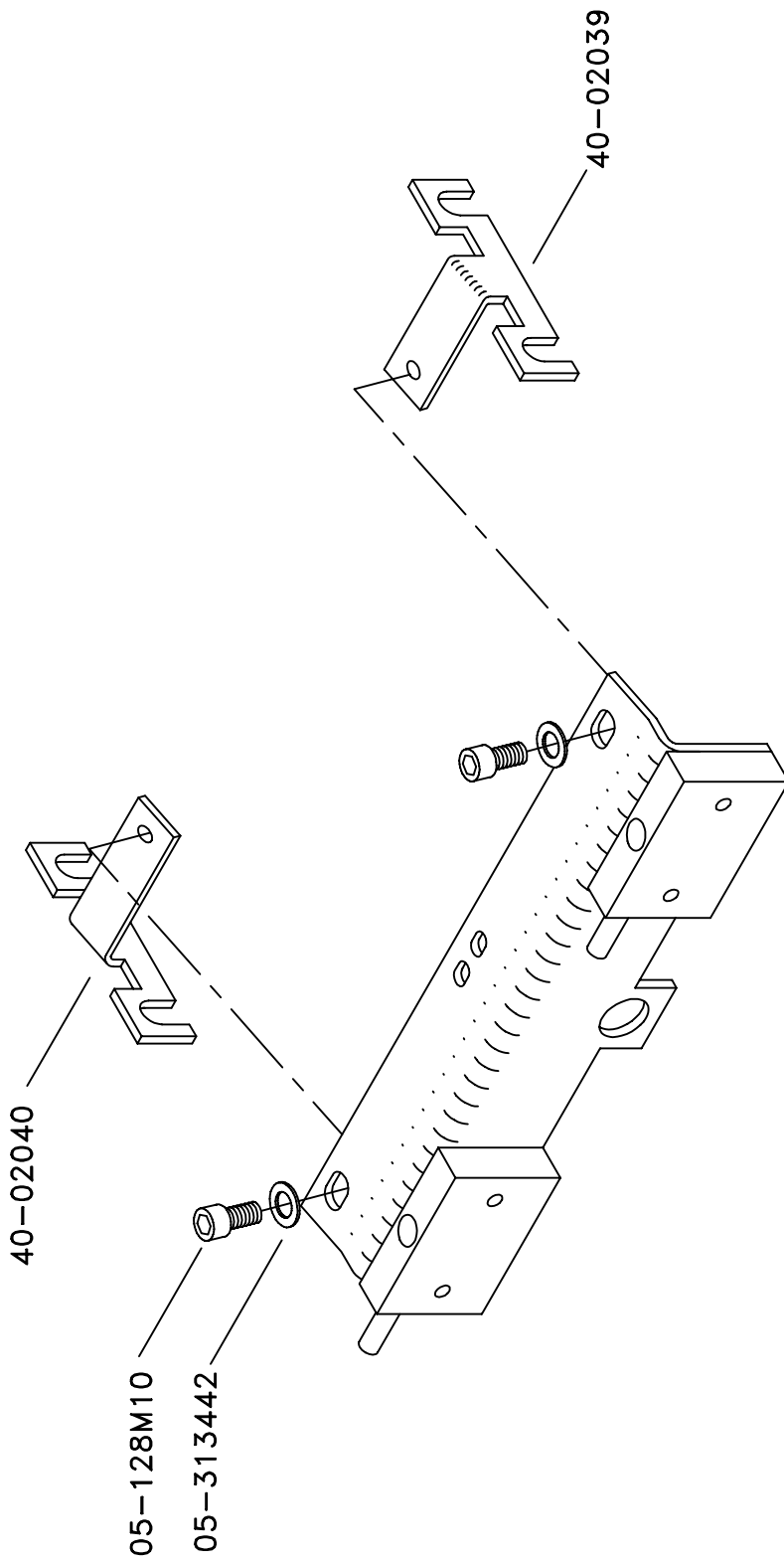




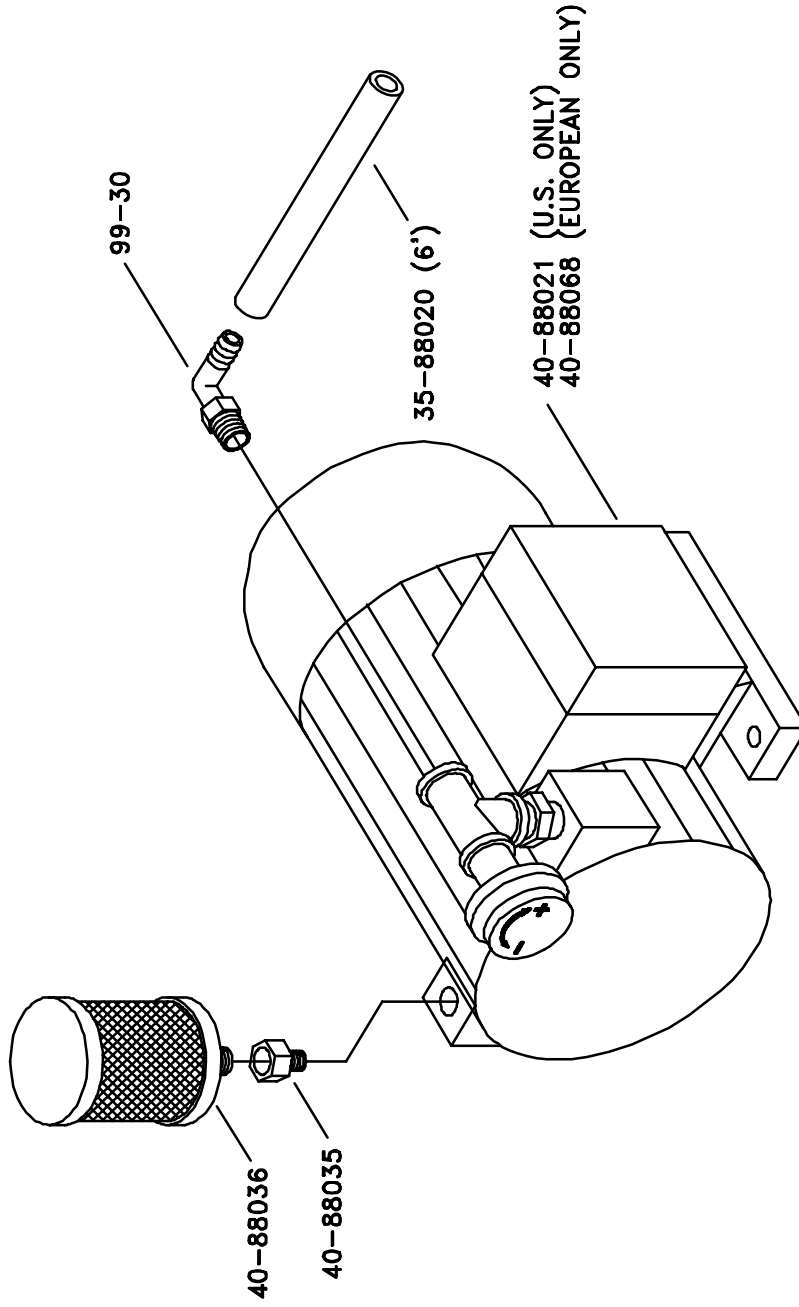




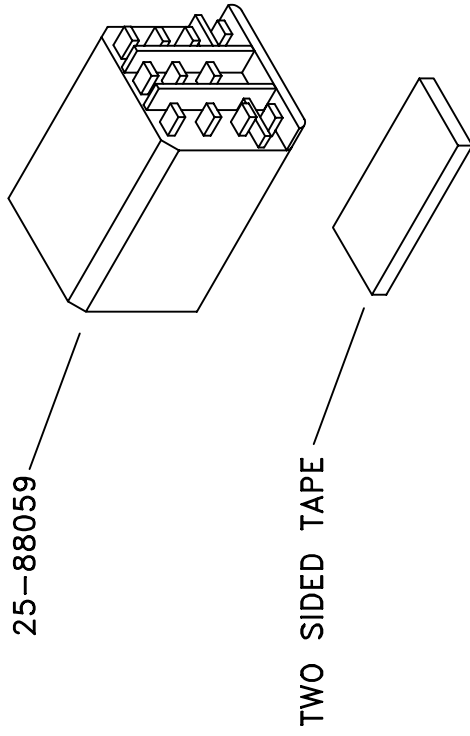
611P31, 8-12-96



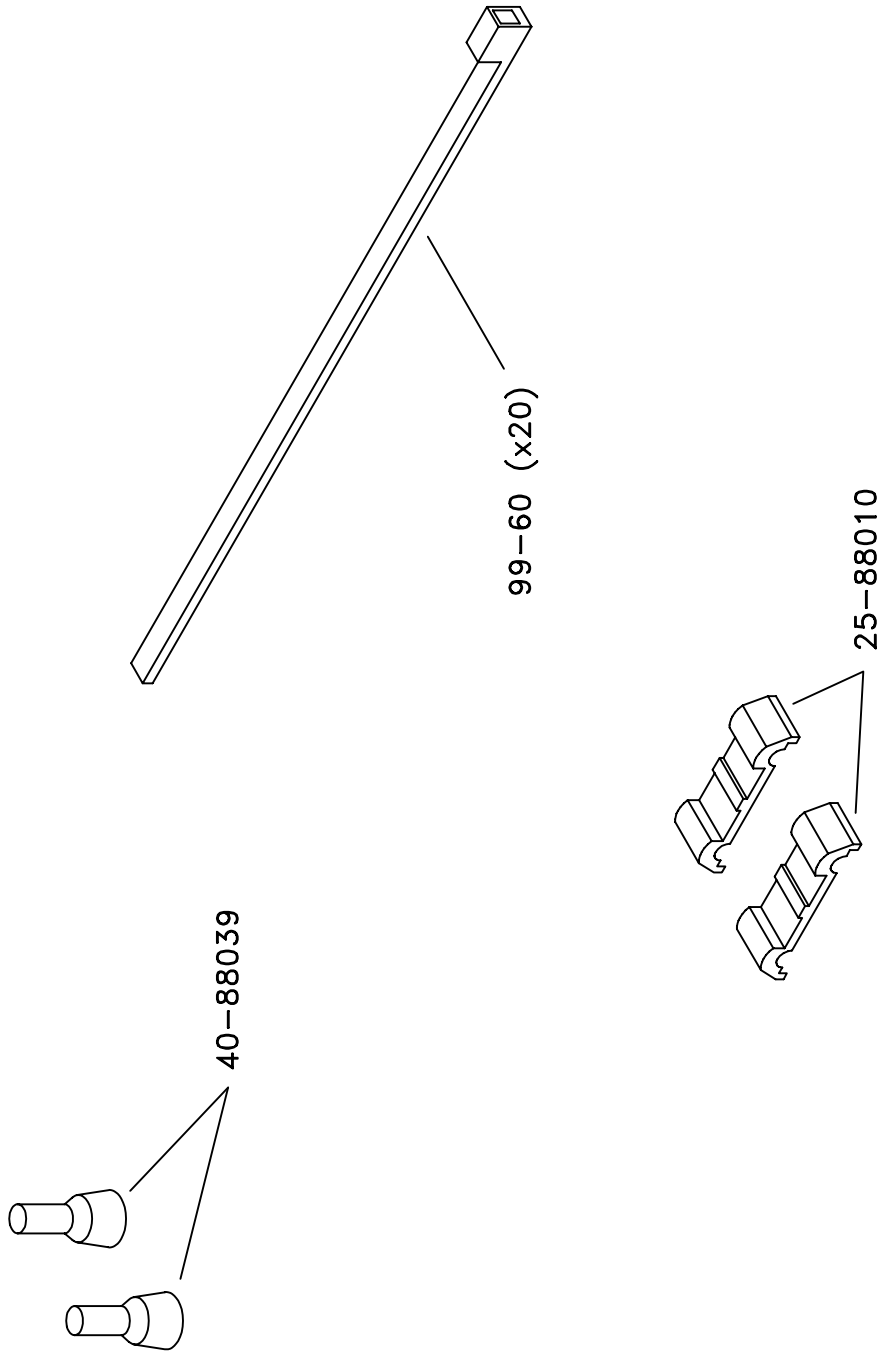
611P33, 5-8-96



611P34, 11-5-97



611P42, 8-12-96



611P37, 5-8-96

ACCEL  [®]
Graphic Systems

11103 Indian Trail, Dallas, TX 75229 Phone 214-484-6808, Fax 800-365-6510
E-Mail accel@dallas.net, Web Site www.accelgraphicsystems.com