

PowderPro[®] Spray System

Installation Instructions

A B Dick 8800/9800/9900



GENERAL INFORMATION

**ATTENTION
POWDERPRO®
OWNER!**

Accel Graphic Systems provides parts and service through its authorized distributors and dealers. Therefore, all requests for parts and service should be directed to your local dealer.

The philosophy of Accel Graphic Systems is to continually improve all of its products. Written notices of changes and improvements are sent to Accel Graphic Systems' Dealers.

If the operating characteristics or the appearance of your product differs from those described in this manual, please contact your local Accel Graphic Systems Dealer for updated information and assistance.

Always update your equipment when improvements are made available, especially those related to safety.

YOUR AUTHORIZED POWDERPRO® DEALER IS:

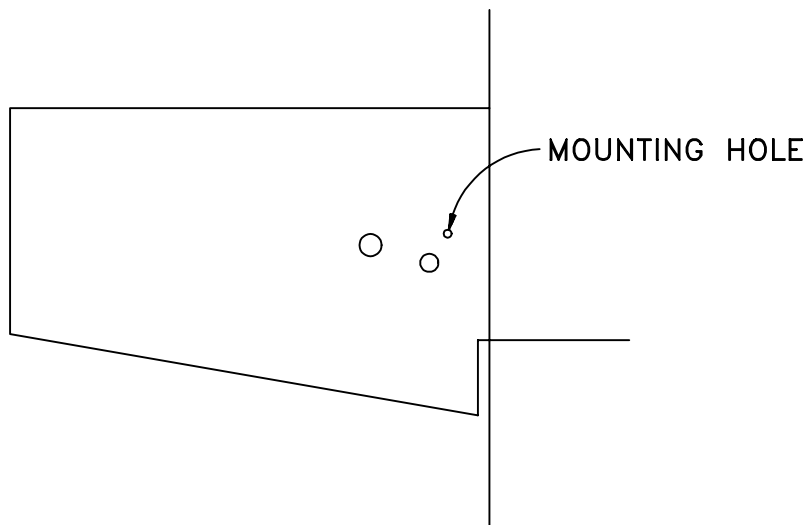
**THE SERIAL NUMBER OF YOUR
POWDERPRO® IS:**

For technical assistance, please contact:

ACCEL GRAPHIC SYSTEMS
11103 Indian Trail
Dallas, TX 75229
(972) 484-6808
FAX (800) 365-6510
E-MAIL accel@dallas.net
WEB SITE www.acelgraphicsystem.com

PowderPro® is covered by U.S. Patents Pending

Diagram A



INSTALLATION

1

Disconnect the electrical power to the press.

2

Remove the OPS & NOPS delivery side covers, and the NOPS upper and lower press side covers.

3

Locate the two holes (one each at the OPS and NOPS) in the delivery frames as shown in diagram A. These holes will be used to mount the spray bar mounting brackets.

5

Diagram B

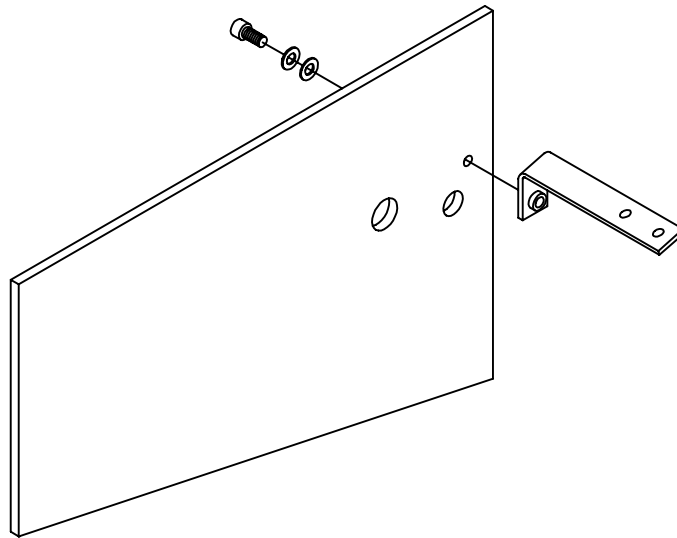


Diagram C

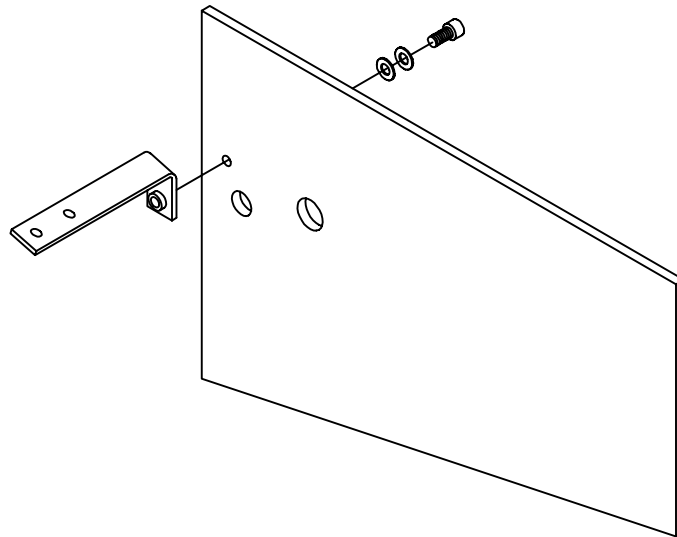
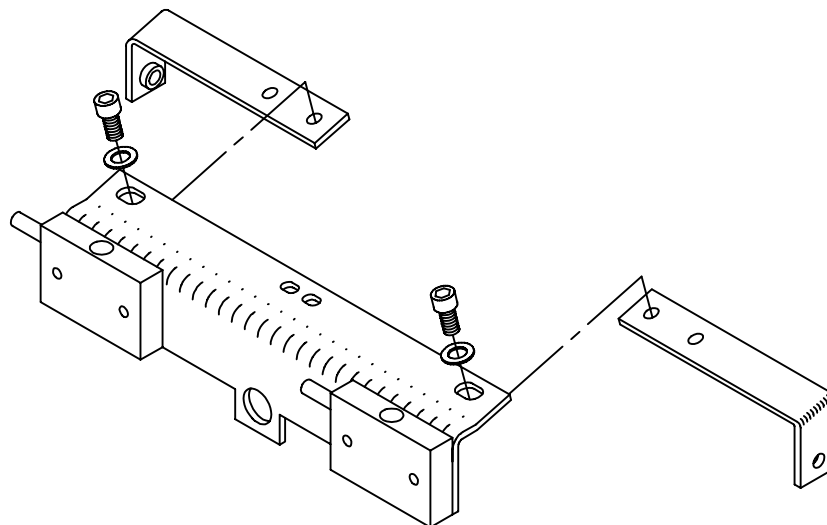


Diagram D



INSTALLATION

4

Using the provided hardware install the NOPS spray bar mounting bracket as shown in diagram B. Make sure that the orientation of the bracket is as shown.

5

Repeat the previous procedure for the OPS spray bar mounting bracket as shown in diagram C.

6

Attach the spray head assembly to the mounting brackets using the provided hardware as shown in diagram D. Use the inside set of holes for a 9800 and the outside holes for a 8800. Route the hoses between the lower chain and the delivery press frame on the NOPS side. Use the provided tie-wraps to secure the hoses away from any moving parts in the delivery.

7

Diagram E

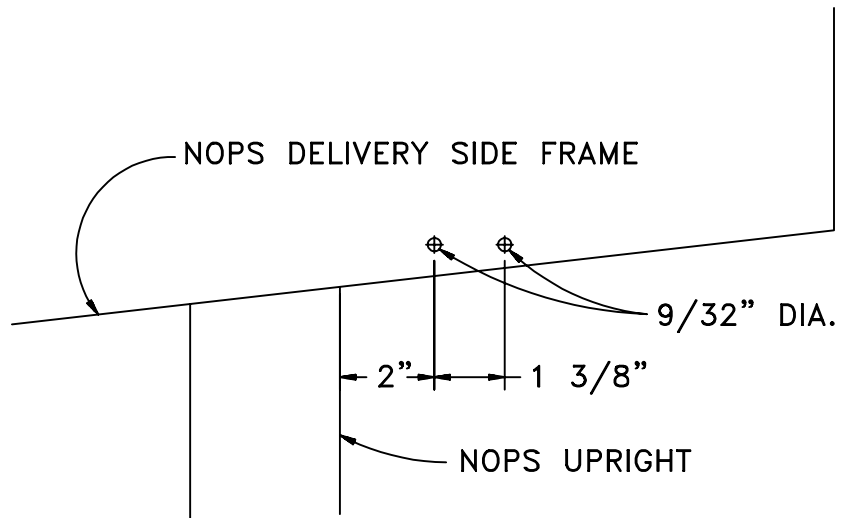
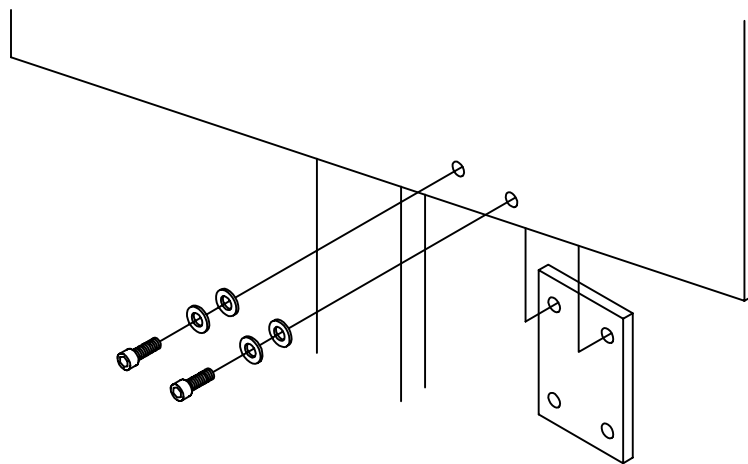


Diagram F



INSTALLATION

7

Rotate the press by hand to make sure that the grippers do not come into contact with the spray bar.

8

Using diagram E as a guide drill two 9/32" dia. holes through the NOPS delivery frame. These holes will be used to mount a plate that the PowderPro® control box will attach to. Do not drill the holes too high or the control box will interfere with the delivery side cover.

9

Using the provided hardware, and the holes drilled in the previous step, attach the mounting plate to the inside of the press frame as shown in diagram F.

9

Diagram G

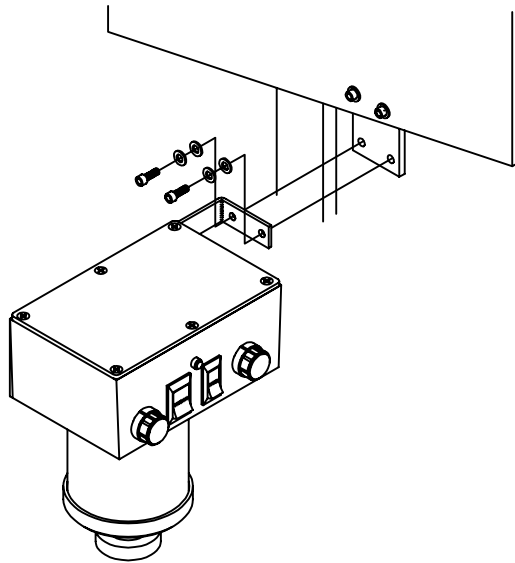
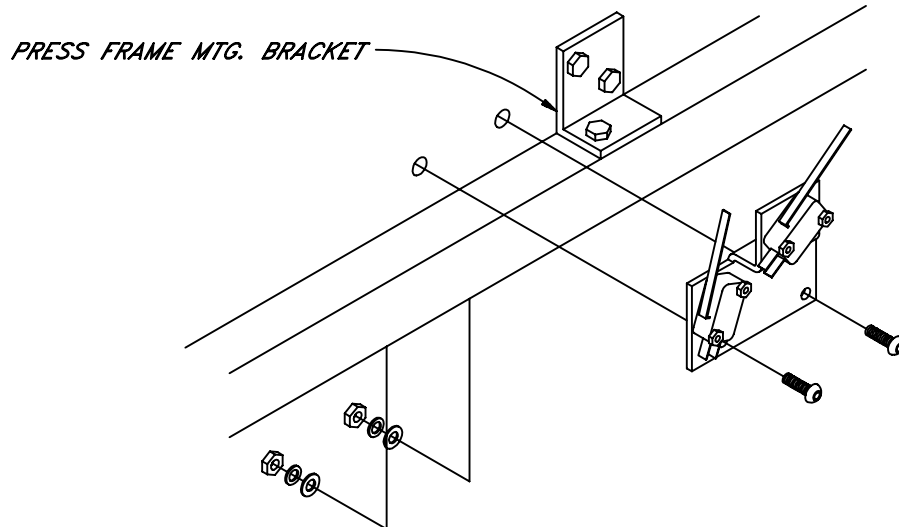


Diagram H



INSTALLATION

10

Using the provided hardware attach the PowderPro® control box assembly to the bracket installed in the previous step as shown in diagram G.

11

Connect the hoses coming from the spray head to the tubes coming out of the PowderPro® control box. The hoses are longer than necessary so you may want to cut them down once you have them routed correctly.

12

Locate the two holes on the NOPS press frame as shown in diagram H. These holes are to the left of the middle press frame mounting bracket. Using the provided hardware mount the microswitch assembly to the press frame as shown in diagram H. This assembly holds the switches that will activate the sprayer when the press goes on impression. The upper switch is activated by the impression arm, and the lower switch is activated by the sheet feed vacuum valve arm via an actuator that is mounted to the arm in the next step.

11

Diagram I

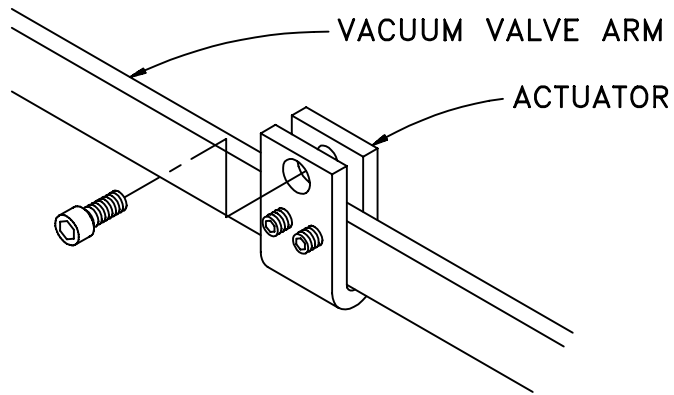
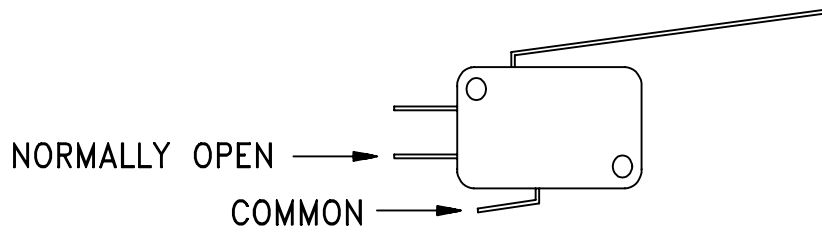


Diagram J



INSTALLATION

13

Rotate the press until the sheet feed vacuum valve closes. Attach the actuator to the arm as shown in diagram I. With the vacuum valve closed secure the actuator to the arm so that the switch is activated. Use the bolt in the top of the actuator to prevent it from spreading apart when you tighten the set screws to the arm.

14

Connect the provided cable assembly to the appropriate mating connector coming out of the PowderPro® control box. Route the cable into the press (when the NOPS lower cover is reinstalled the cable will go under the cover). Route the cable along the press frame to the micro switches installed in a previous step. Connect the black and green wires to the normally open (see diagram J) terminals on the upper (impression) microswitch. Connect the red and white wires to the normally open terminals on the lower (vacuum) microswitch. Use the provided tie wraps to secure the cable away from any moving parts.

Upper Switch

Green - Normally Open
Black - Common

Lower Switch

Red - Normally Open
White - Common

15

Set the provided pump on the floor on the NOPS of the press. Connect the cable coming out of the pump to the appropriate receptacle on the PowderPro® control box. Connect the air supply hose to the barbed fitting on the hose coming out of the control box.

13



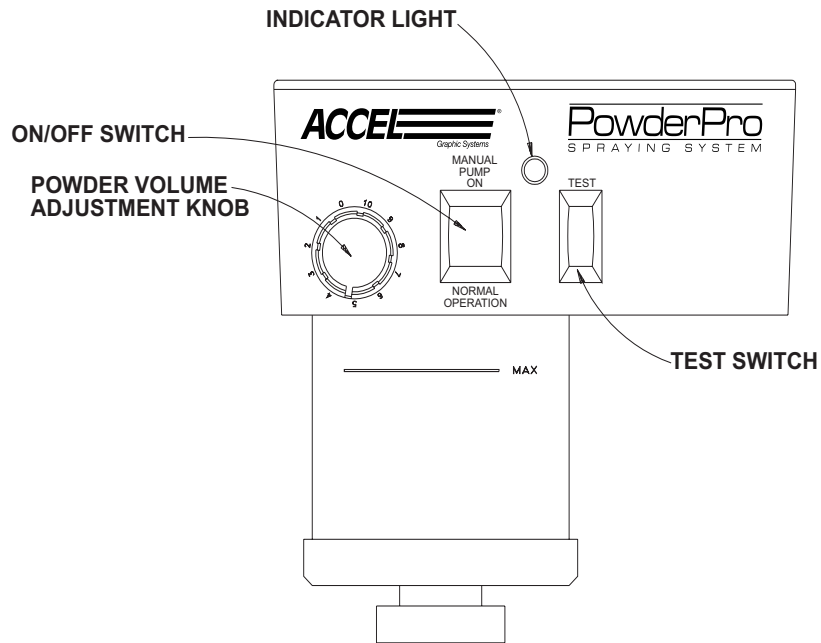
16

Restore the electrical power to the press. Turn the press pump on and check to make sure that the PowderPro® pump came on as well. If the PowderPro® pump does not come on check the connections made either to the cube tap (9800 presses) or the connection in the press electrical cabinet (9870 presses).

Plug the PowderPro® power cord into a standard 115V wall receptacle.

This completes the installation of the PowderPro® spray system. Continue on to the next section for proper set-up and operation procedures.

OPERATION AND MAINTENANCE



POWDERPRO® CONTROLS

VOLUME ADJUSTMENT KNOB

Adjusts the amount of powder being sprayed with “0” the minimum and “10” the maximum.

ON/OFF SWITCH

When switched to the “MANUAL PUMP ON” position the pump will come on to allow for spray volume setting. When switched to the "NORMAL OPERATION" position, the system is armed and will spray only when the press goes on impression. The center position is off.

INDICATOR LIGHT

This light is illuminated only when the unit is actually spraying. The light will go on and off as sheets pass under the spray nozzles.

TEST SWITCH

Use this switch for setting powder volume when not printing. With the on/off switch set to "MANUAL PUMP ON," push the test switch to visually see the amount of powder being sprayed, adjust if necessary.

OPERATION AND MAINTENANCE

PUMP ADJUSTMENT

Before the PowderPro® spray system can be used, the pump pressure must be calibrated to allow for maximum adjustment to cover a wide range of jobs. The powder volume adjustment range is controlled by the outlet pressure of the pump. Locate the adjustment knob on the pump near the outlet hose. Loosen the locking knob and turn the adjustment knob clockwise to increase the pressure for more powder. Turn the knob counterclockwise to decrease pressure for less powder. Set the correct pump pressure as follows:

1. Turn the pump on by switching the ON/OFF switch to the "MANUAL PUMP ON" position.
2. Set the volume adjustment knob to "10" (MAX).
3. Hold the TEST switch ON while looking at the spray nozzles in the delivery.
4. Have someone slowly adjust the pressure on the pump until the powder is barely visible. A powder setting of "10" with visible powder in the delivery is more than enough powder. Consequently, a setting of "5" results in no visible powder but sufficient powder for most jobs.
5. Tighten the locking knob on the pump adjustment.

INITIAL SETTINGS

The initial setting for the powder volume adjustment knob on an average job is "5." If more powder is needed than is available at a setting of "10" you will need to adjust the pump. If less powder is needed than is available at a setting of "0" you also have to adjust the pump. In order to have a wide range of powder volume adjustment available for different jobs, the "normal" setting for average jobs should be somewhere in the range from "4" to "6." Otherwise you will need to adjust the pump.

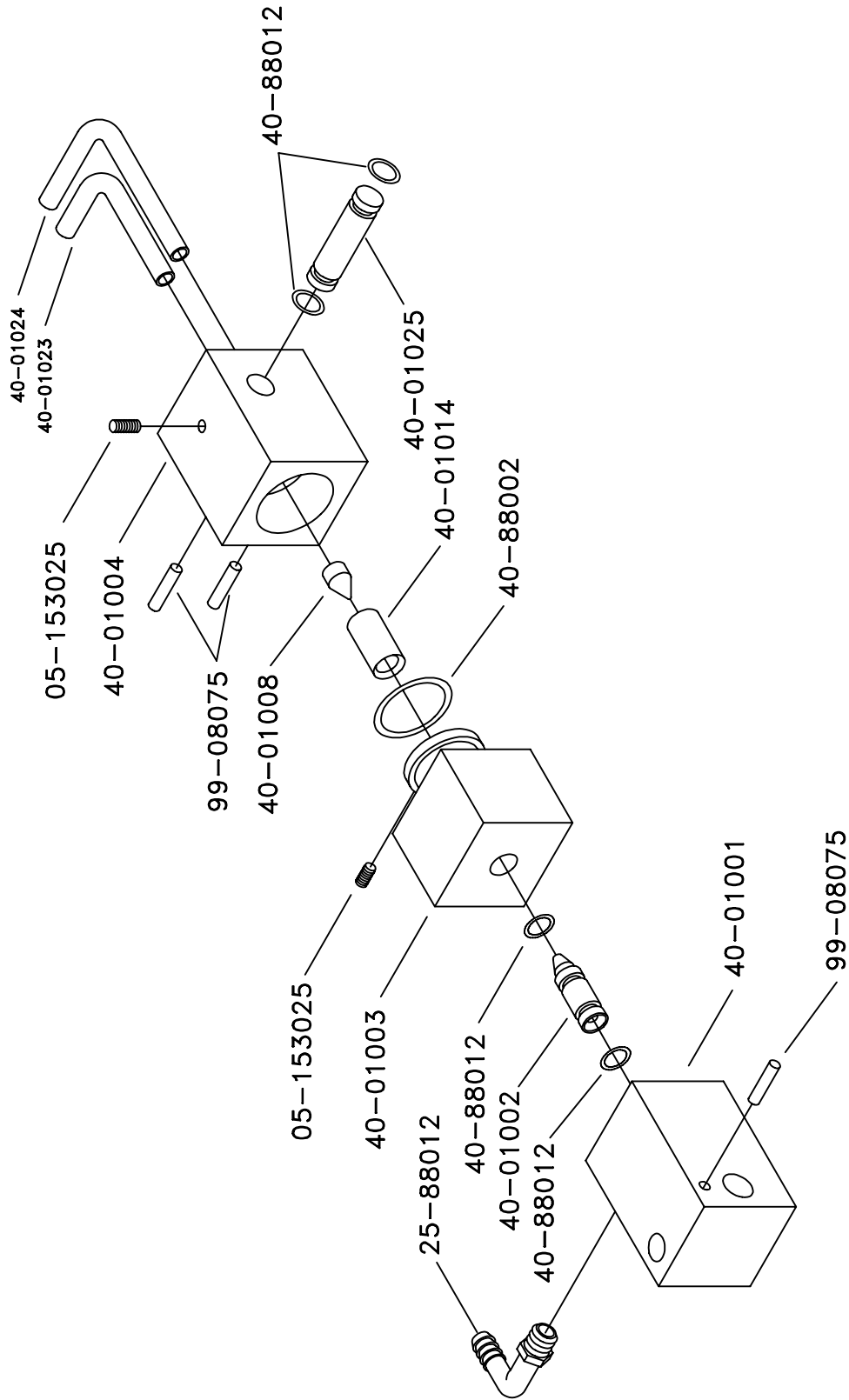
OPERATION AND MAINTENANCE

OPERATION

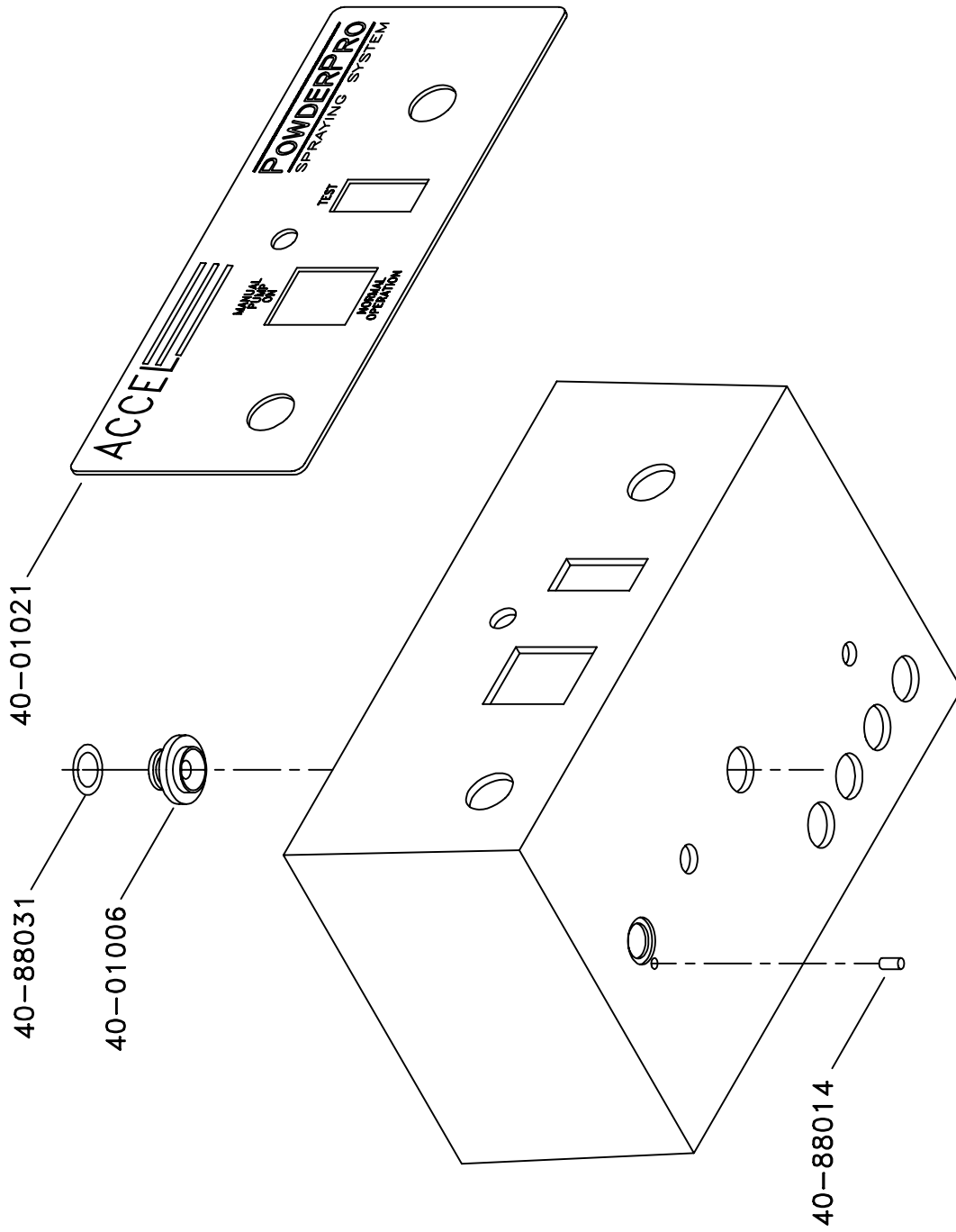
1. Fill the powder hopper with an intermediate grain (20-25) powder (available from Accel) up to the "MAX" line on the hopper.
2. Place the ON\OFF switch to the "NORMAL OPERATION" position.
3. Consider the sheet width and if necessary change the spray nozzle selector knob. When switching from a four nozzle to a two nozzle setting, you must readjust the powder volume.
4. The spray length is automatically controlled by the press.
5. Adjust the powder volume adjustment knob if necessary.
6. The powder sprayer will operate automatically when the press goes on impression and a sheet is present.

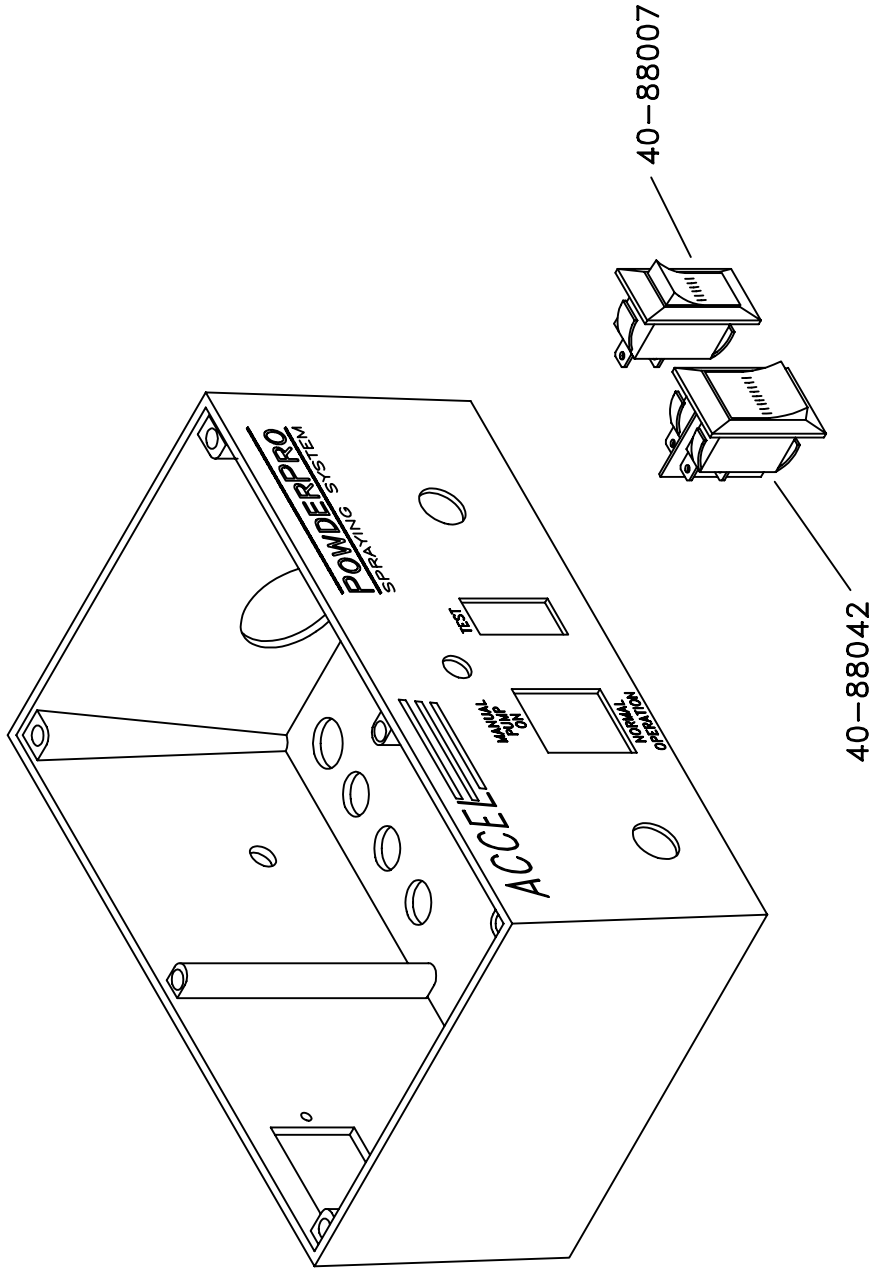
MAINTENANCE

1. Clean the filter on the pump once a week, blowing it clean with compressed air.
2. Remove any powder that may have accumulated on the bottom of the spray nozzles daily.
3. Never use solvents containing oil when cleaning any part of the sprayer.
4. Use compressed air only if your compressor is equipped with a proper in-line dryer. Otherwise, use canned air. Moisture in the sprayer will affect its performance.

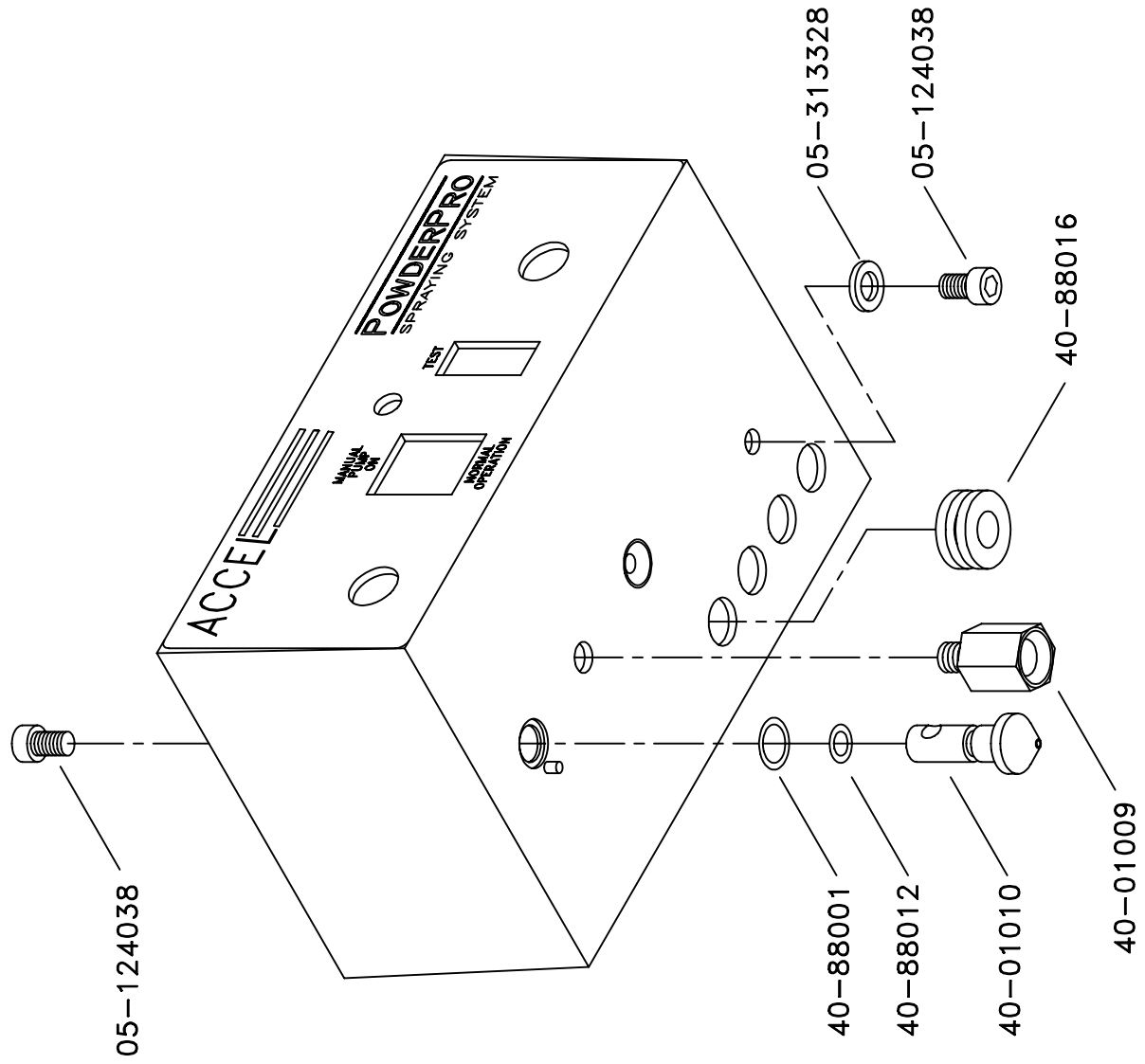


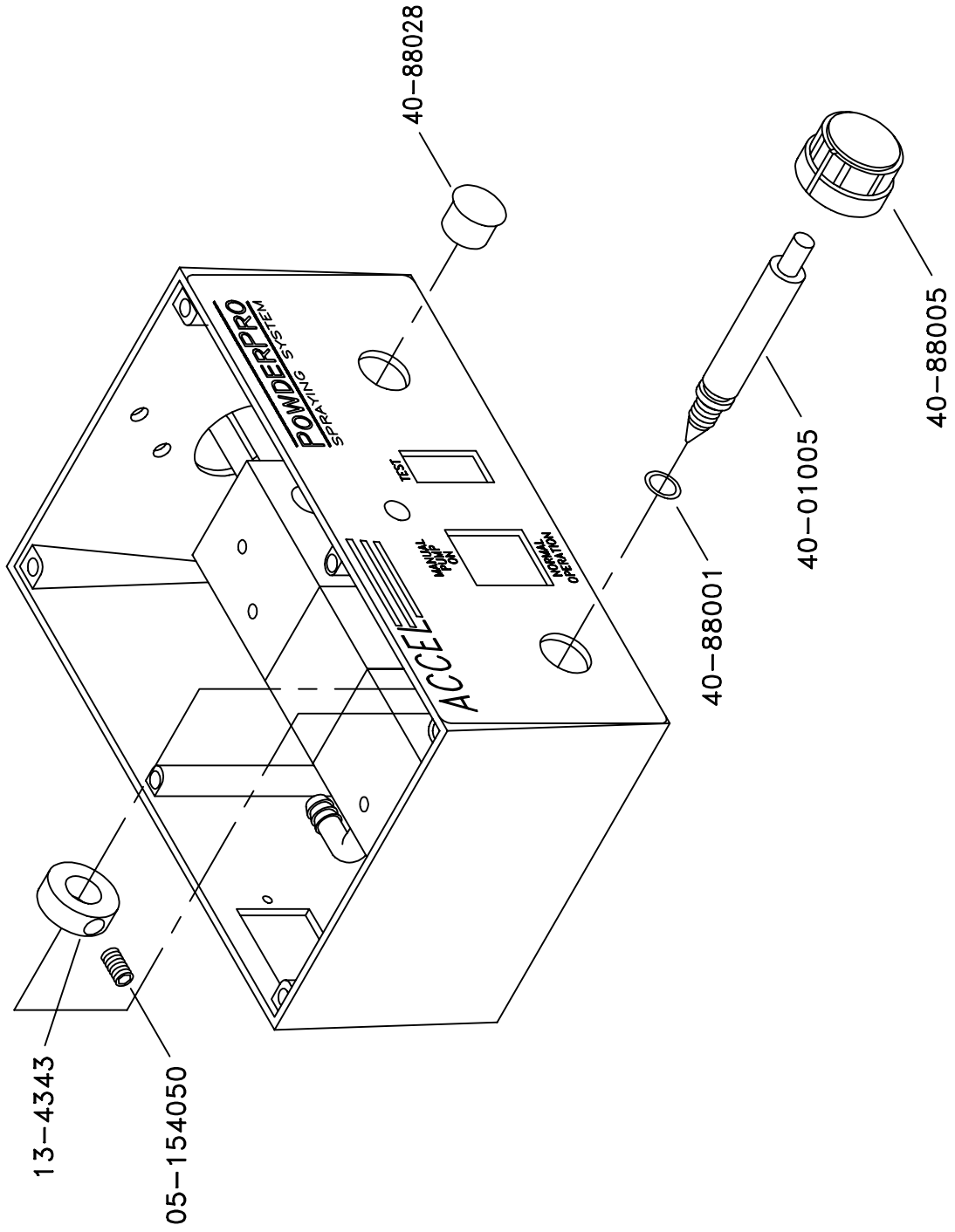
9800F51

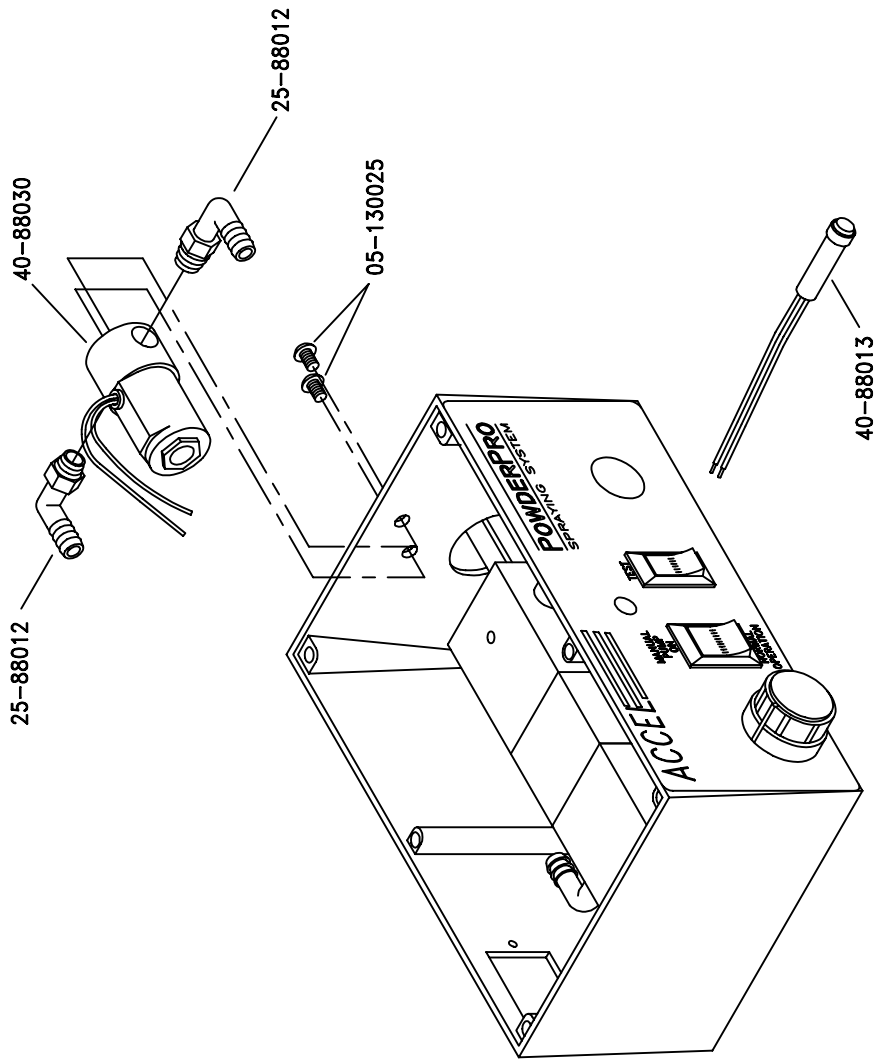


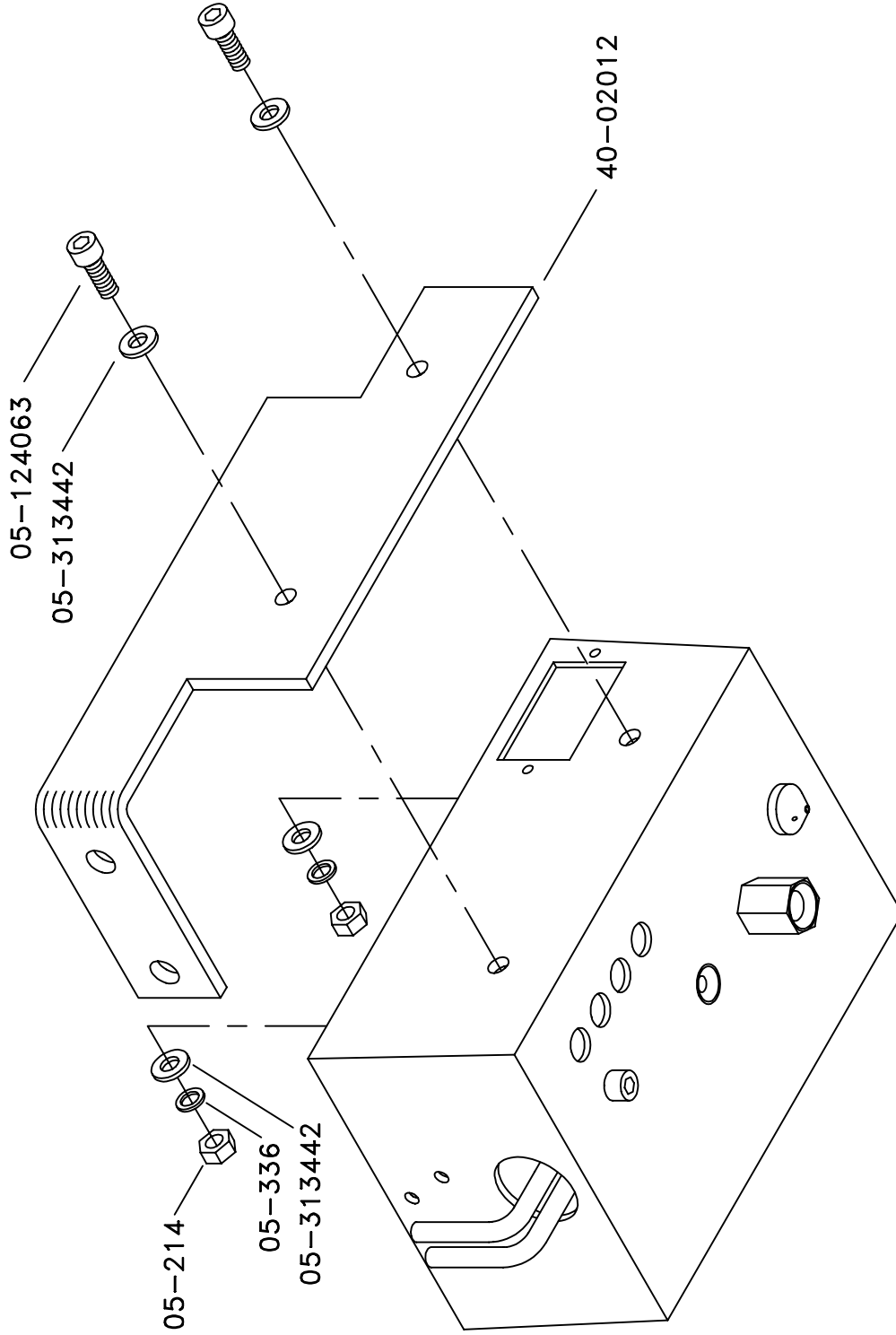


9800P53

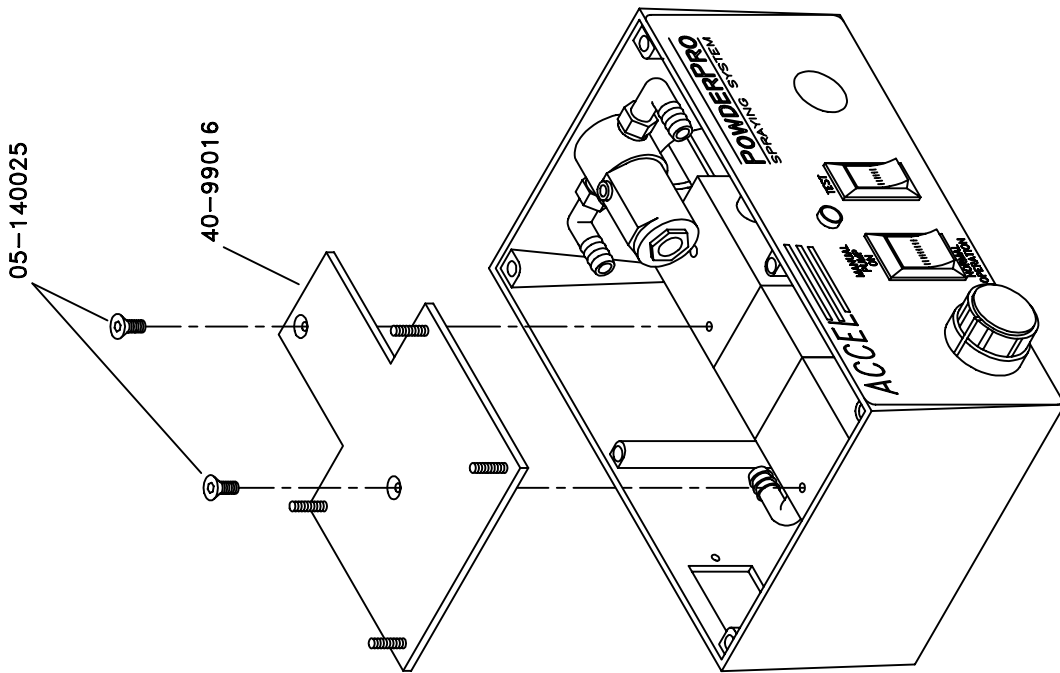


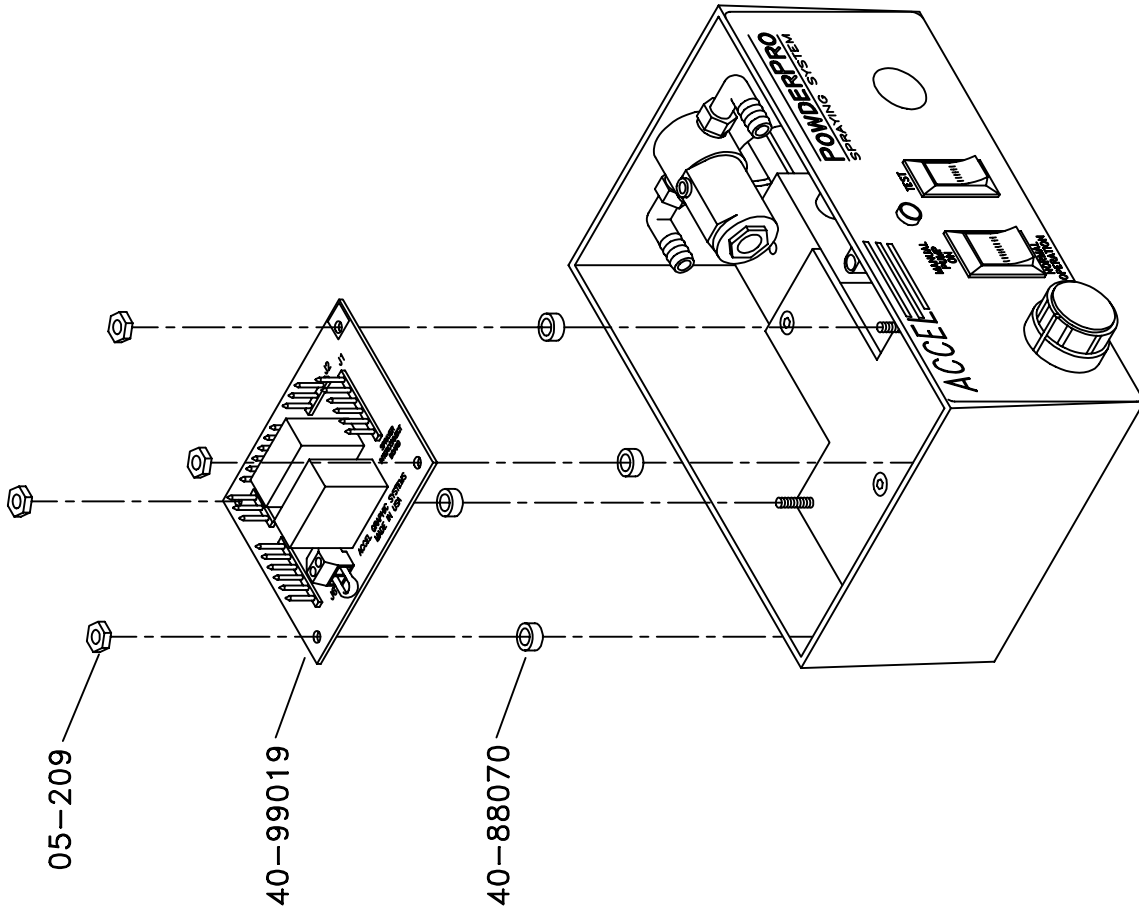




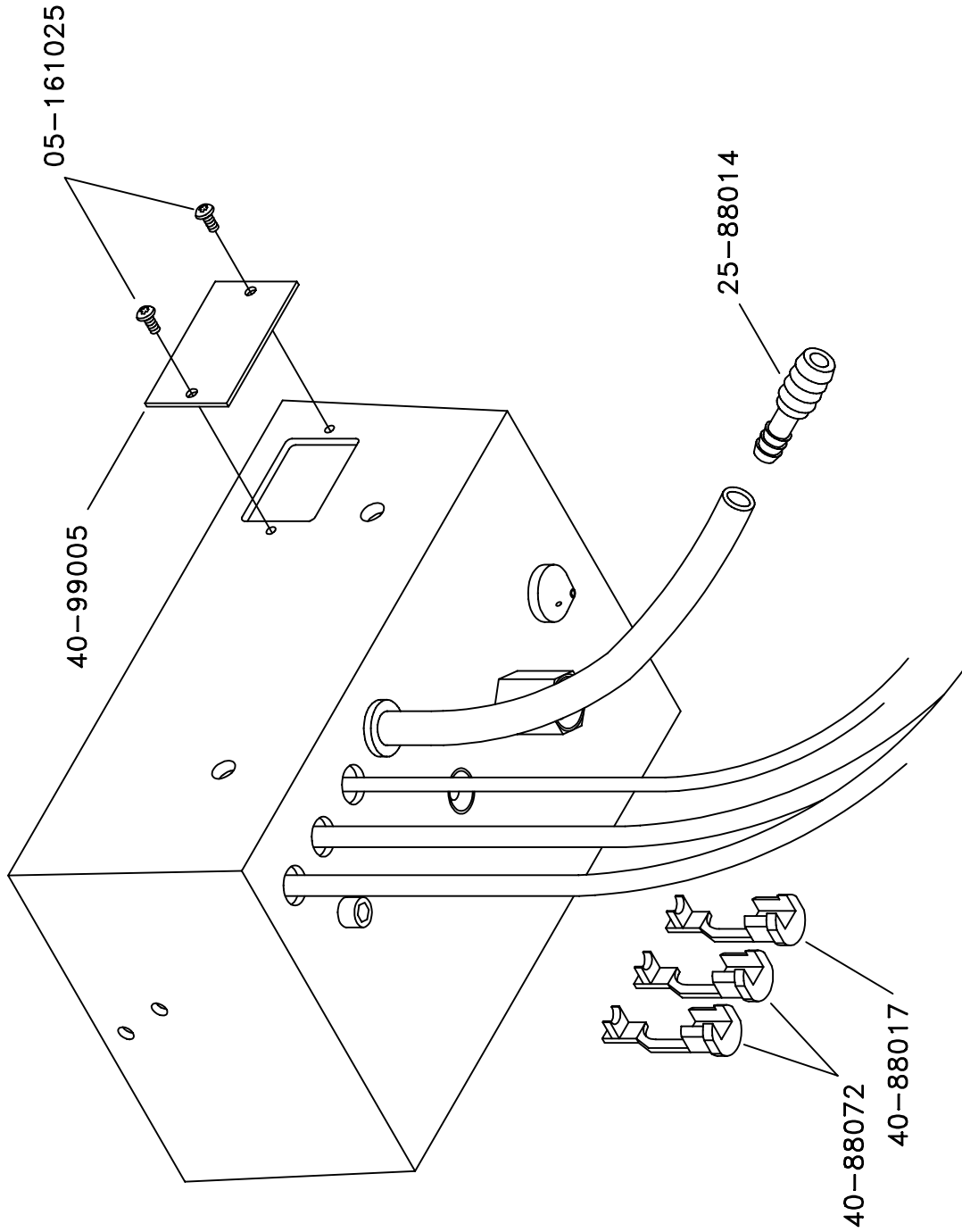


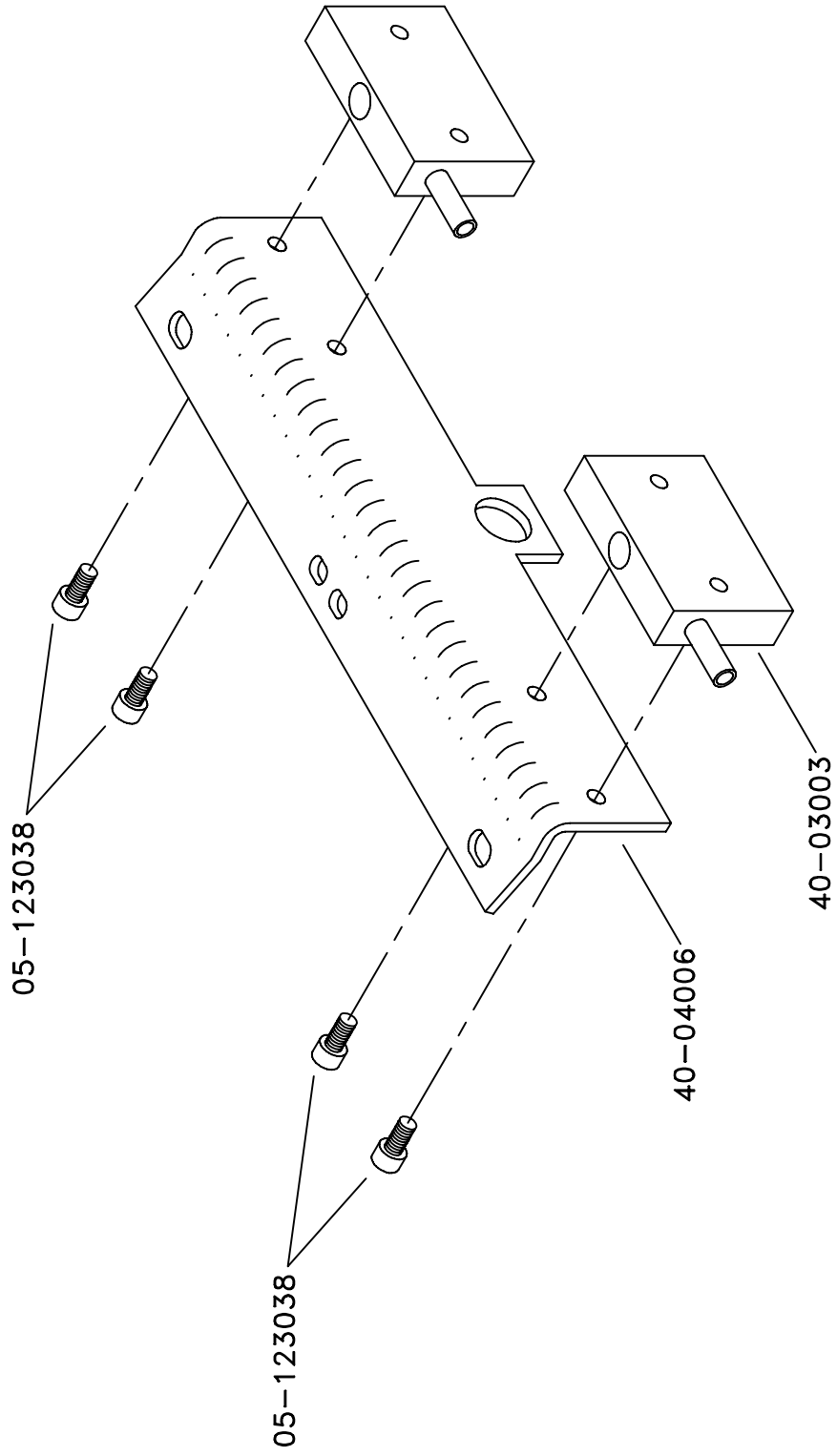
9800F18

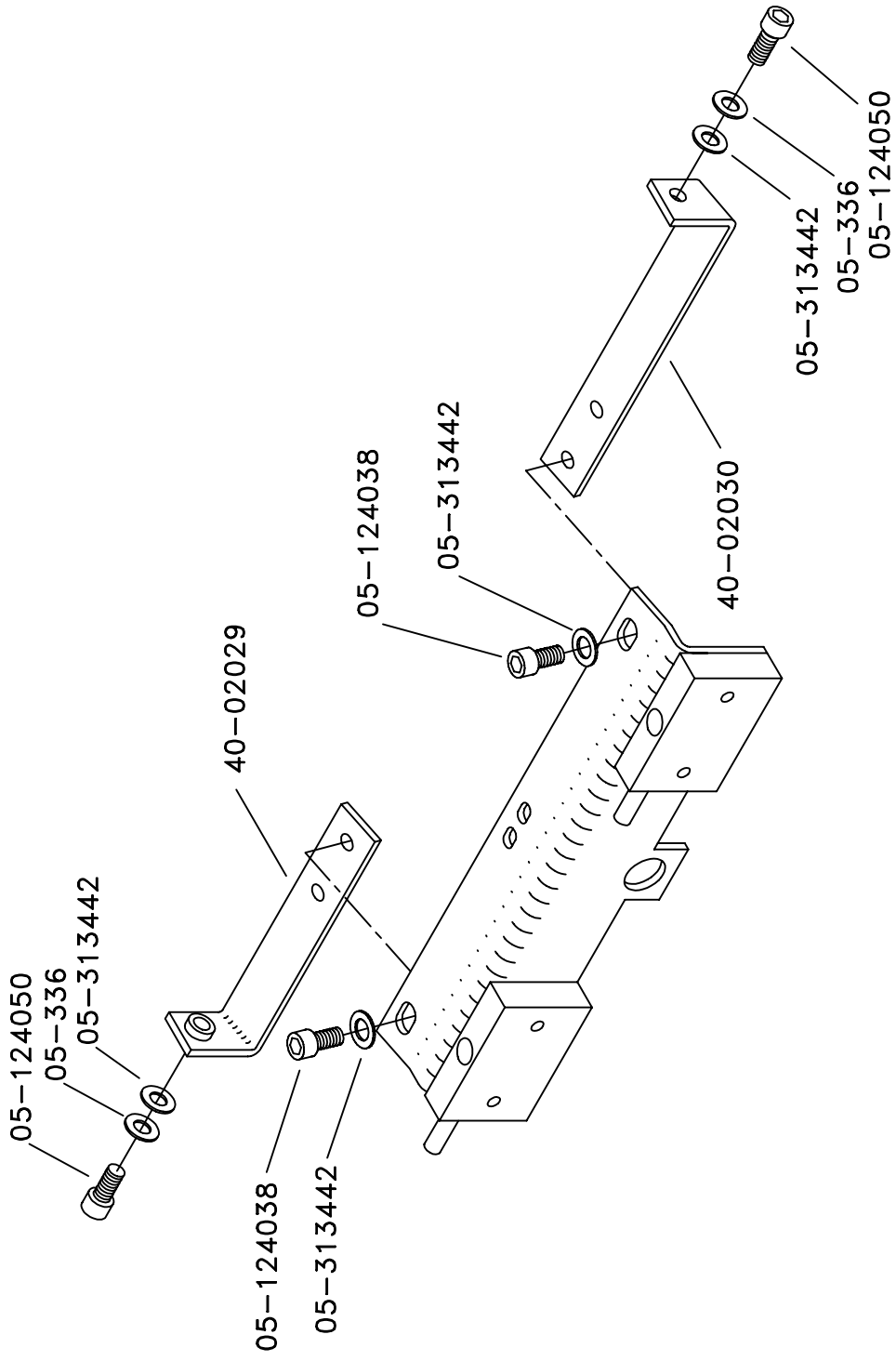


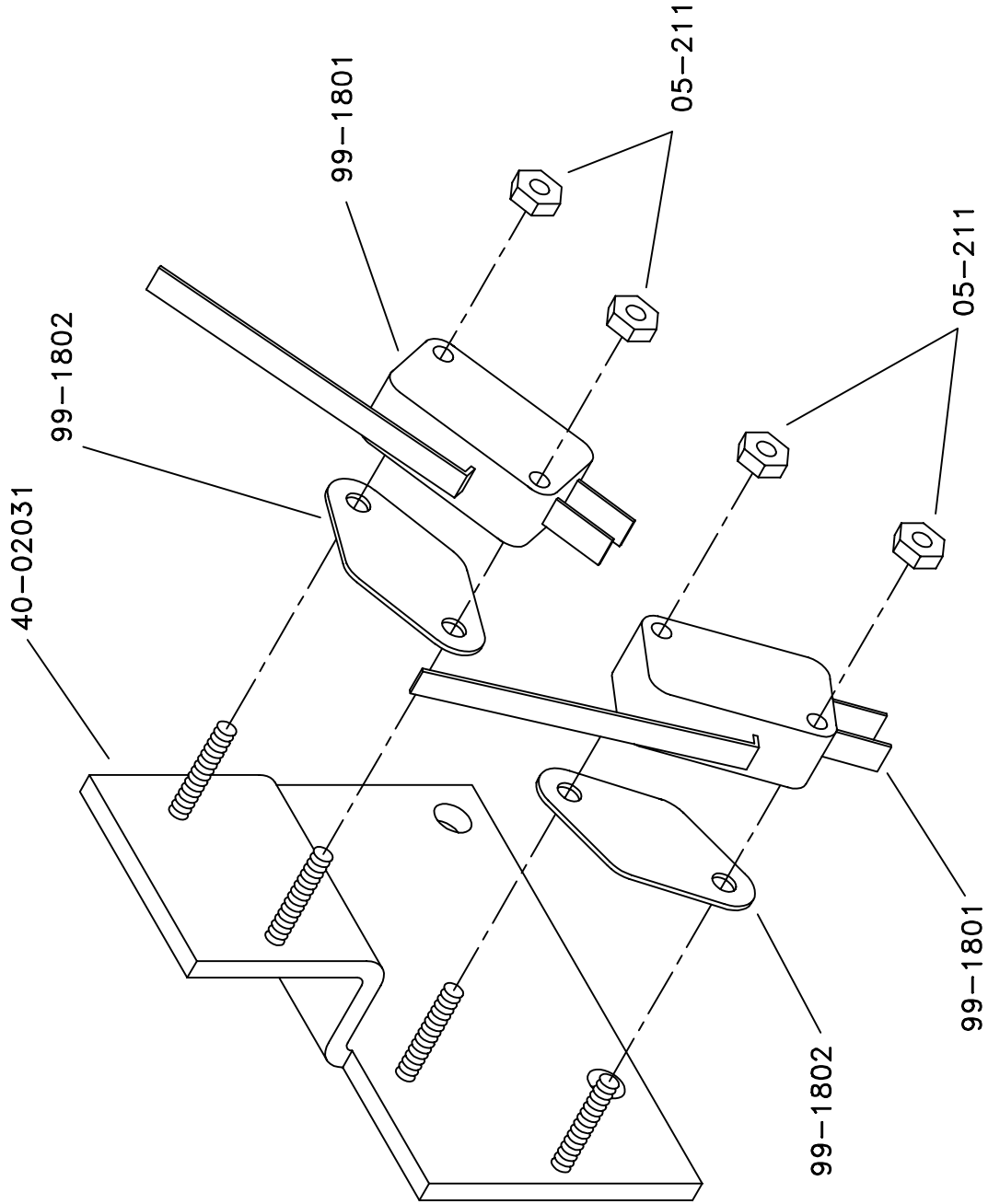


9800P23

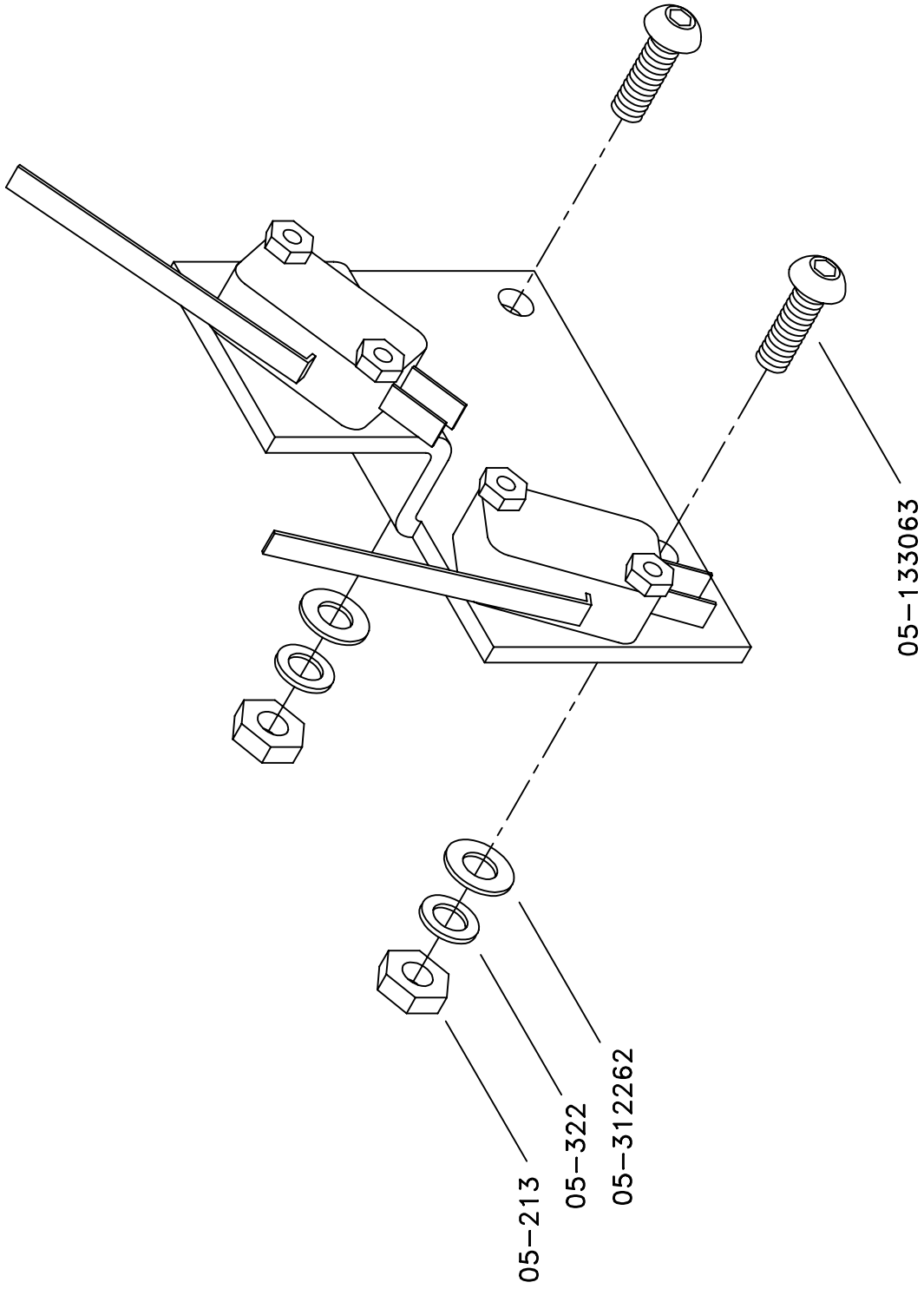


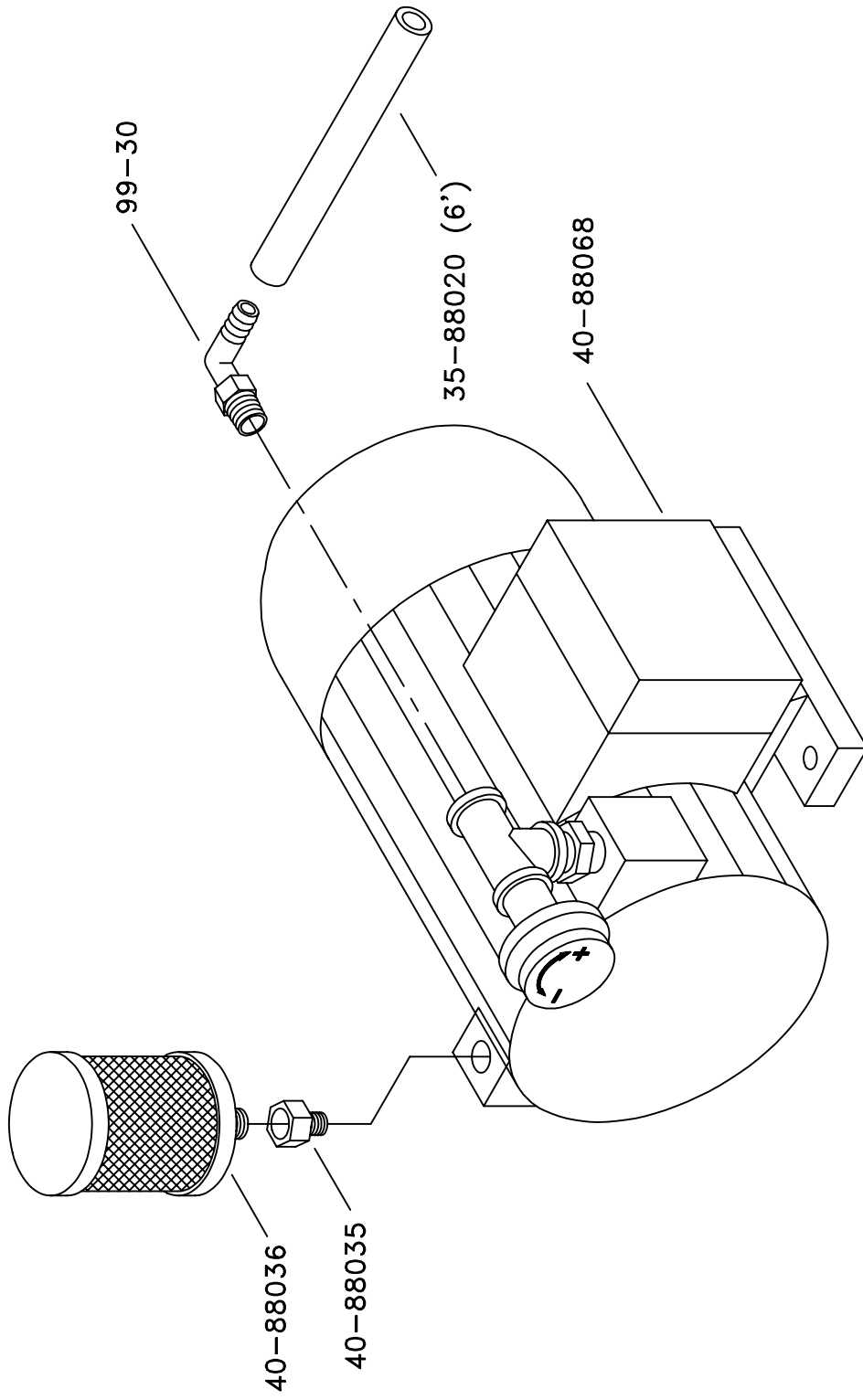


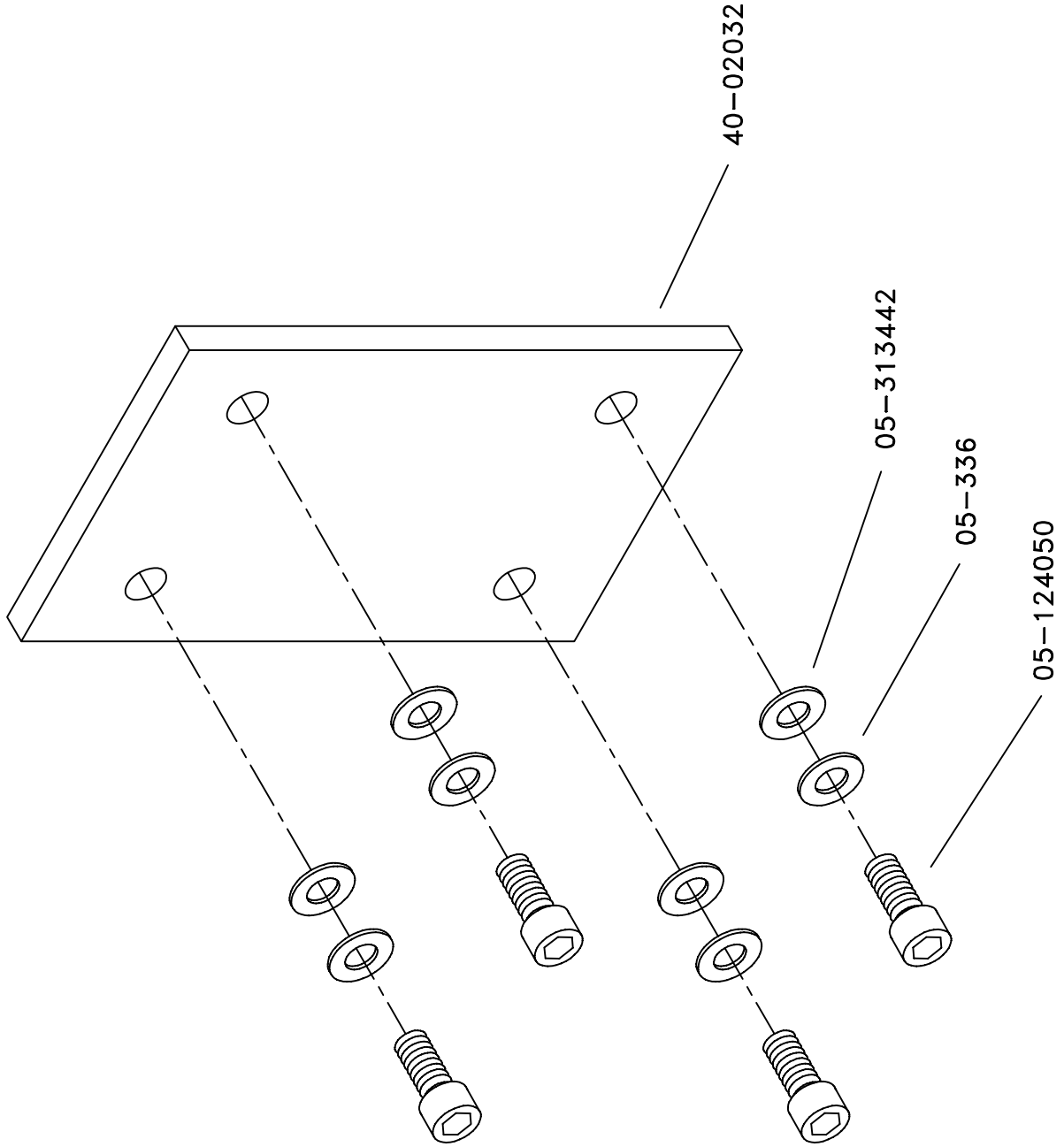




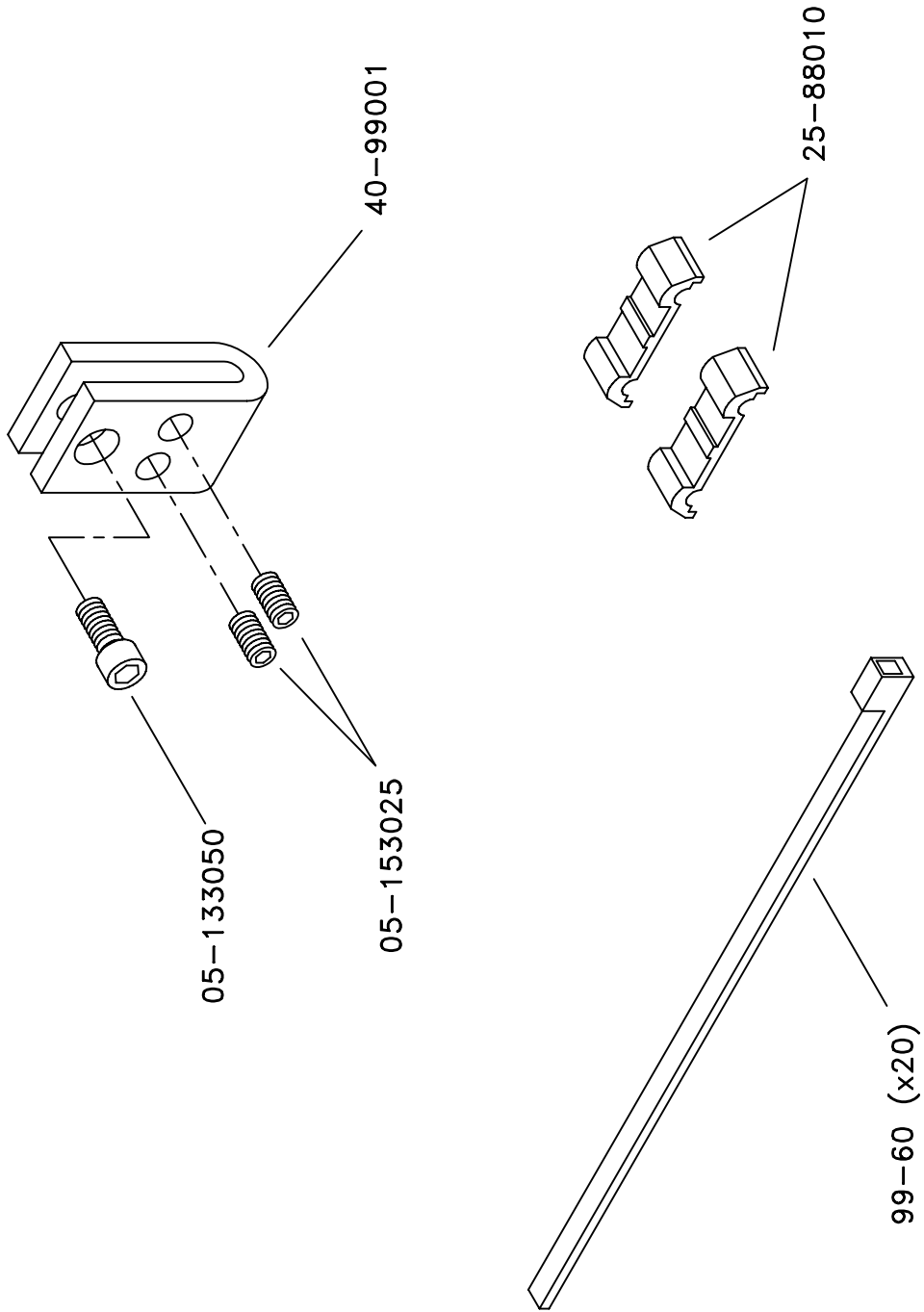
9800P01



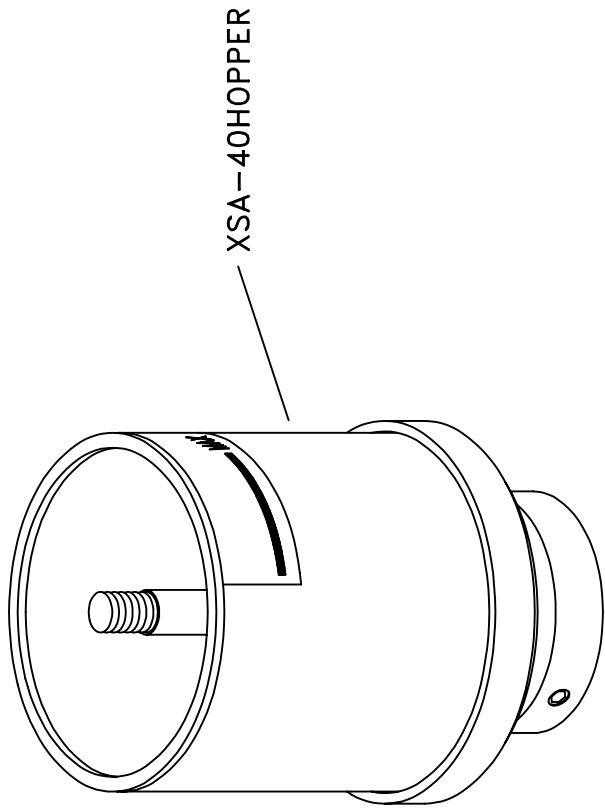




9800P40



9800P49



ACCEL  [®]
Graphic Systems

11103 Indian Trail, Dallas, TX 75229 Phone 972-484-6808, Fax 800-365-6510
E-Mail accel@dallas.net, Web Site www.accelgraphicsystems.com