

Parts Catalog

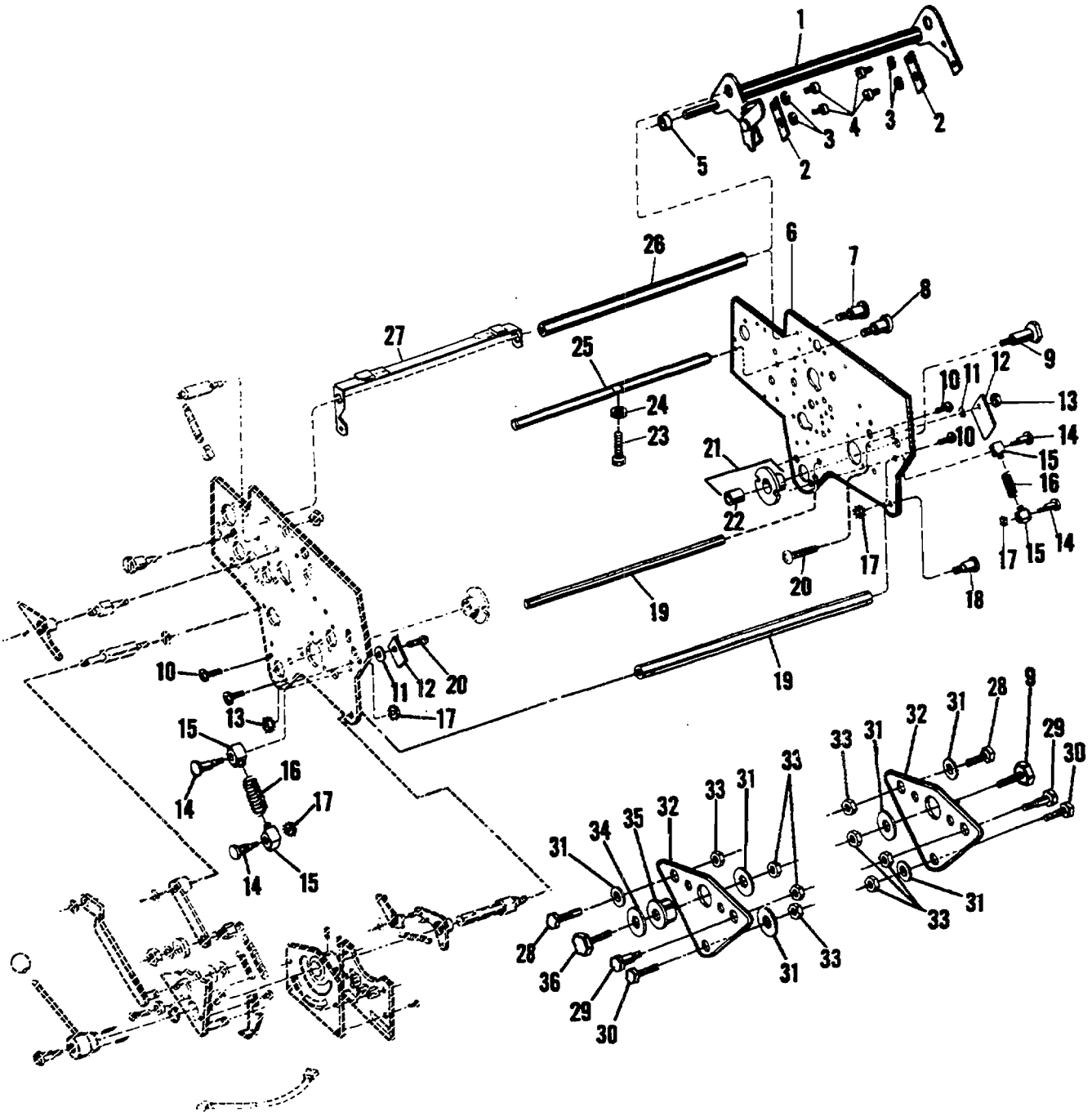


FIGURE 26
MODEL 9815/9850 Upper Side Frames and Associated Parts - Part II

Parts Catalog

| Index No. | Part No. | MODEL 9805/9850 Figure 26 Description | Units Per Assy. |
|-----------|----------|--|--------------------|
| 1 | 017793 | LEVER AND SHAFT ASSEMBLY | 1 |
| 2 | 073524 | SLIDE - Adjustment | 2 |
| 3 | 021861 | WASHER - .196 I.D. x .437 O.D. | 4 |
| 4 | 014350 | SCREW - 10-32 x 5/16 | 4 |
| 5 | 075643 | SPACER - Aquamatic Blockout Assembly (TD and CD) | 1 |
| 6 | 017021 | FRAME - Upper, N.O.S. | 1 |
| 6 | 016207 | FRAME - Upper, N.O.S. (Square Corners) | 1 |
| 7 | 078660 | STUD - Pivot, 5/16-24 | 1 |
| 8 | 196264 | SCREW - Dowel, 1/4-28 | 2 |
| 9 | 073140 | SCREW - Pivot, 3/8-24 x 5/8 | 1 |
| 10 | 111054 | SCREW - 10-32 x 1/2 | 4 |
| 11 | 021268 | WASHER - .265 I.D. x .437 O.D. | 3 |
| 12 | 007745 | GUIDE | 3 |
| 13 | 150085 | NUT - 1/4-28 | 3 |
| 13 | 150083 | NUT - 10-32 (9860/9810 XCD) | 1 |
| 14 | 072349 | SCREW - Eccentric, 1/4-28 | 4 |
| 15 | 072389 | BLOCK - Eccentric, Spring | 4 |
| 16 | 072424 | SPRING - Compression, .537 O.D. x 1.343 O.A.L. | 2 |
| 17 | 014807 | NUT - 1/4-28 | 4 |
| 18 | 193601 | SCREW - Shoulder, 5/16-24 | 2 |
| 19 | 007575 | TIE BAR | 2 |
| 20 | 111074 | SCREW - 1/4-28 x 3/4 | 3 |
| 20 | 014203 | SCREW - N.O.S. (9860/9810XCD) | 1 |
| 21 | 074323 | BUSHING ASSEMBLY - N.O.S. | 1 |
| 22 | 014606 | BUSHING - .629 I.D. x .753 O.D. x .630 O.A.L. | 1 |
| 23 | 079862 | SCREW - Adjusting, 10-32 x 1-1/4 | 1 |
| 24 | 079863 | KNOB | 1 |
| 25 | 017996 | TIE BAR | 1 |
| 26 | 008024 | TIE BAR | 1 |
| 27 | 007582 | REST ASSEMBLY - (TD and CD) | 1 |
| 28 | 191427 | SCREW - Shoulder, 3/8-24 | 2 |
| 29 | 194823 | SCREW - Shoulder, 3/8-24 | 2 |
| 30 | 111099 | SCREW - 3/8-24 x 7/8 | 2 |
| 31 | 191428 | WASHER - .510 I.D. x 1.000 O.D. | 6 |
| 32 | 076825 | PLATE - Head Support | 2 |
| 33 | 150089 | NUT - 3/8-24 | 6 |
| 34 | 021911 | WASHER - .578 I.D. x .875 O.D. | 1 |
| 35 | 084289 | BUSHING - Eccentric | 1 |
| 36 | 084291 | SCREW - Shoulder, 3/8-24 | 1 |