

Parts Catalog

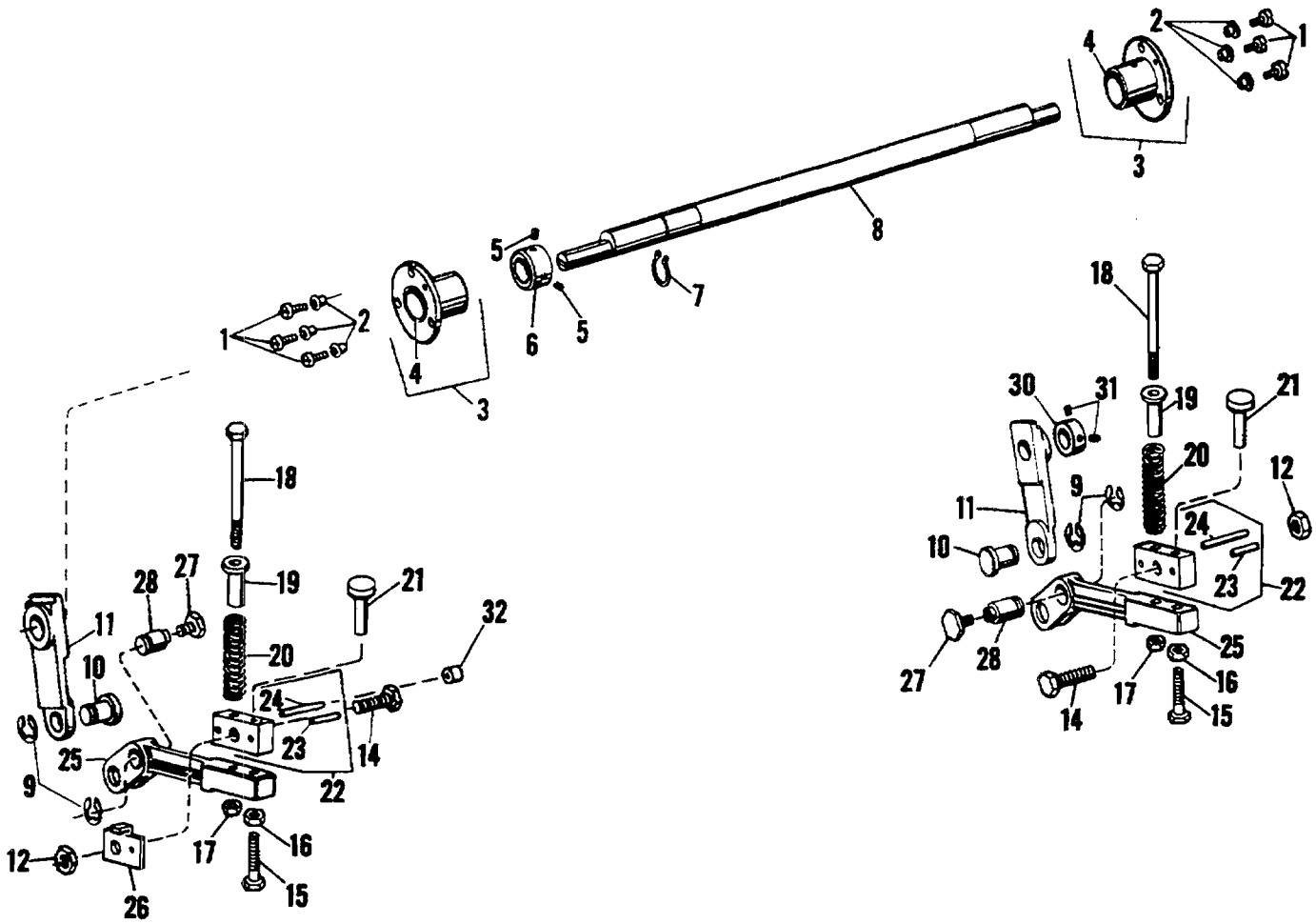


FIGURE 23
MODEL 9815/9850 Master Cylinder Shaft and Support Arms

Parts Catalog

Index No.	Part No.	MODEL 9805/9850 Figure 23 Description	Units Per Assy.
1	100141	SCREW - 1/4-28 x 1/2.....	6
2	080972	SPACER - Screw.....	6
3	082057	BEARING ASSEMBLY.....	2
4	193603	BUSHING - 1.126 I.D. x 1.315 O.D. x .630 O.A.L.....	1
5	014206	SCREW - Set, 1/4-28 x 3/8.....	2
6	080820	COLLAR - Cylinder Locking.....	1
7	014517	RING - Retaining, 1.066 I.D.....	1
8	007628	SHAFT - Master Cylinder.....	1
9	001094	RING - Retaining, .394 I.D.....	4
10	072394	PIVOT - Support Link.....	2
11	080911	LINK - Support.....	2
12	150089	NUT - 3/8-24.....	2
14	014121	SCREW - 3/8-24 x 1-1/4.....	2
15	195721	BOLT - 5/16-18 x 1-5/8.....	2
16	001834	NUT - 5/16-18.....	2
17	001821	NUT - 1/4-28.....	2
18	014172	BOLT - 1/4-28 x 3-3/4.....	2
19	072416	GUIDE - Spring.....	2
20	194807	SPRING - Comp., 39/64 O.D. x 1-1/8 O.A.L. (TD and CD).....	2
20	194808	SPRING - Comp., 13/16 O.D. x 2-39/64 O.A.L. (QP,QPC and PRO).....	2
21	080447	PIN - Separator.....	2
22	010421	BLOCK - Support Arm, Standard.....	2
22	010372	BLOCK - Support Arm, W/Gap Control.....	2
23	001981	PIN - Roll, .199 O.D. x .890 O.A.L.....	1
24	100131	PIN - Roll, .199 O.D. x 1.230 O.A.L.....	1
25	083313	SUPPORT ARM.....	2
26	078346	LEVER - Stop.....	1
27	080715	SCREW - Shoulder.....	2
28	017077	BEARING.....	2
30	080956	COLLAR - End Play.....	1
31	014390	SCREW - Set, 1/4-28 x 1/4.....	2
32	006774	TUBING.....	2