

Parts Catalog

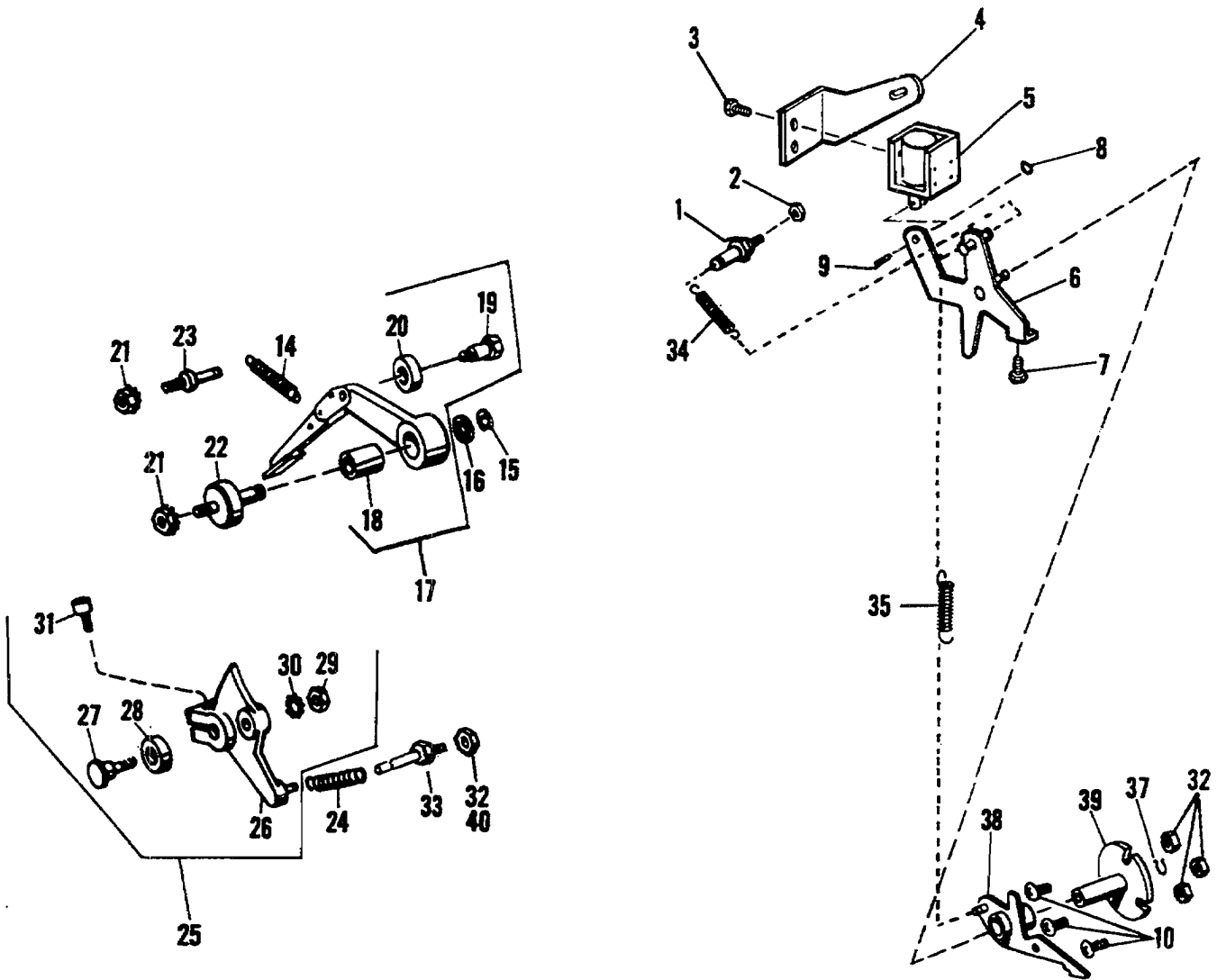


FIGURE 35
MODEL 9815/9850 Impression Solenoid and Power Lever Assembly

Parts Catalog

Index No.	Part No.	MODEL 9805/9850 Figure 35 Description	Units Per Assy.
1	196236	STUD - Spring Anchor	1
2	150083	NUT - 10-32	1
3	111033	SCREW - 8-32 x 5/16	2
4	009665	BRACKET - Mounting	1
5	252824	SOLENOID - 24 V.D.C.	1
6	009662	LEVER ASSEMBLY- Imp. Cyl. Latch	1
7	014174	SCREW - 10-32 x 5/8	1
8	014515	RING - Vinyl, .080 I.D. x .160	2
9	190713	PIN - Solenoid Link	1
10	111054	SCREW - 10-32 x 1/2	3
14	072442	SPRING - Tension, .343 O.D. x 2.000 O.A.L.	1
15	001080	RING - Retaining, .302 I.D. x .660 O.D. x .037	1
16	014727	WASHER - .385 I.D. x .760 O.D. x .032	1
17	072362	POWER LEVER ASSEMBLY - Impression Cylinder	1
18	001446	BUSHING - .503 O.D. x .379 I.D. x .875 O.A.L.	1
19	192323	SCREW - Eccentric, 1/4-28 x 1/4	1
20	072367	TRUCK	1
21	150085	NUT - 1/4-28	2
22	196237	STUD - Power Lever (9815/9850)	1
22	072368	STUD - Power Lower (9805-9810)	1
23	072413	SPRING ANCHOR - Power Lever	1
24	072442	SPRING Tension, .343 O.D. x 2.000 O.A.L.	1
25	072354	LEVER ASSEMBLY - Impression Cyl. Separator	1
26	071561	LEVER - Impression Cyl. Separator	1
27	072357	PIN - Eccentric	1
28	072358	TRUCK - Impression Cyl. Separator Lever	1
29	001818	NUT - 1/4-28	1
30	001740	WASHER - Lock, .267 I.D. x .506 O.D. x .030	1
31	100891	SCREW - 1/4-20 x 1.000	1
32	014808	NUT - 10-32 (9805-9810)	5
33	196235	STUD - Spring, 1 13/16 O.A.L. (9815/9850)	1
33	072412	STUD - Spring, 13/32 O.A.L. (9805-9810)	1
34	064673	SPRING - Tension, .375 O.D. x 1.375 O.A.L.	1
35	041774	SPRING - Tension, .250 O.D. x .781 O.A.L.	1
37	001046	RING - Retaining, .283 I.D. x .027	2
38	009664	LEVER ASSEMBLY - Impression Cyl. Latch Lever	1
39	072378	BEARING - Impression Cyl. Latch Lever	1
40	014248	NUT - 10-32 (9815/9850)	1