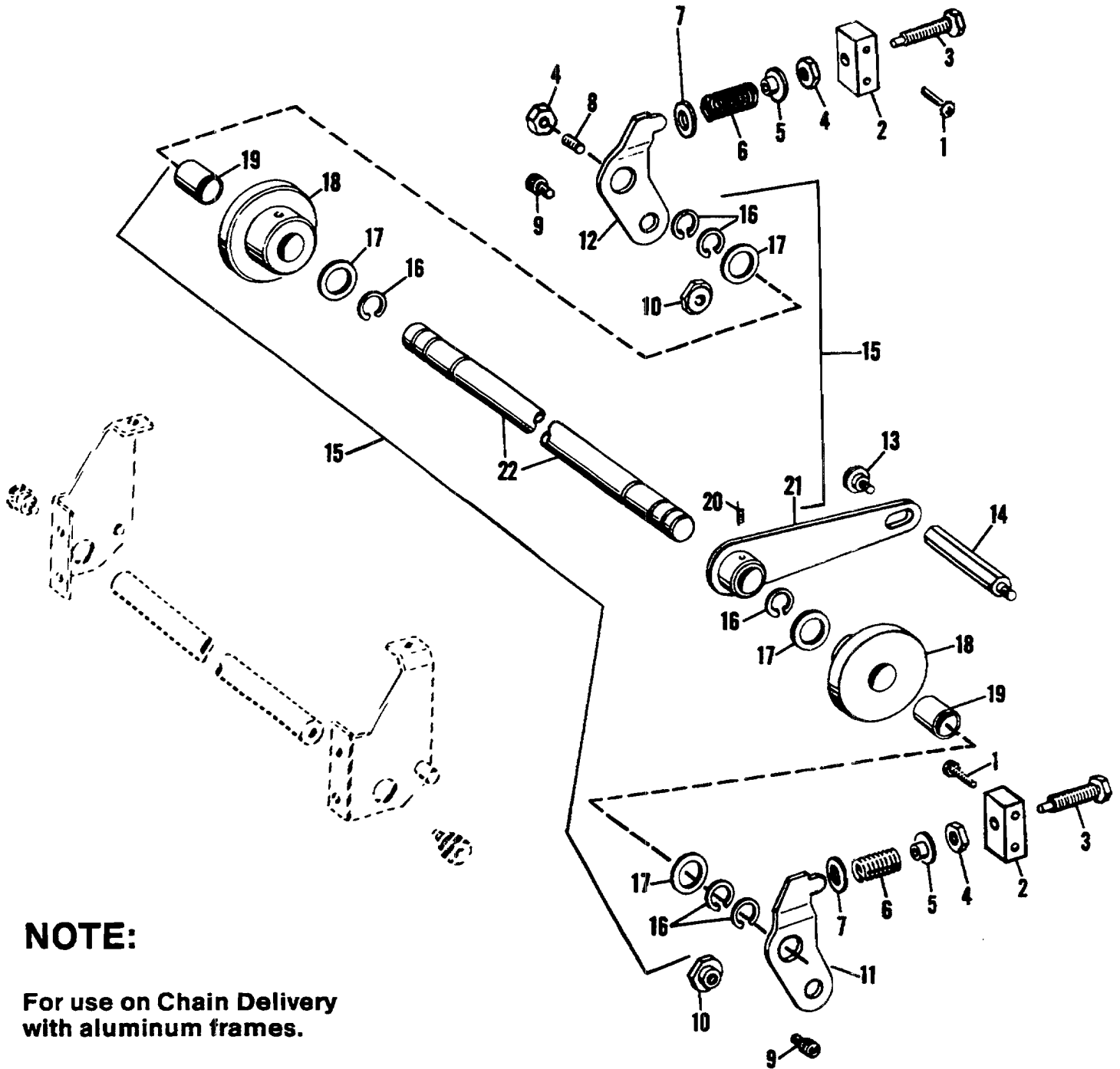


Parts Catalog



NOTE:

For use on Chain Delivery
with aluminum frames.

FIGURE 68
MODEL 9815/9850 Idler Shaft Assembly

Parts Catalog

Index No.	Part No.	MODEL 9805/9850 Figure 68 Description	Units Per Assy.
1	111059	SCREW - 10-32 x 1.000.....	4
2	081527	BLOCK - Idler Tension	2
3	081528	SCREW - Tension Adjusting, 5/16-18	2
4	001840	NUT - 5/16-18	3
5	081623	RETAINER - Spring	2
6	081836	SPRING - Compression, .750 O.D. x 1.500 O.A.L. x .156	2
7	190157	SPACER - Idler Compression Spring	2
8	014322	SCREW - Set, 5/16-18 x 3/4	1
9	014215	SCREW - 10-32 x 3/8	2
10	190134	NUT - 10-32	2
11	081622	LEVER - Idler Tension, O.S.	1
12	081654	LEVER - Idler Tension, N.O.S.	1
13	081697	SCREW - Shoulder, 10-32	1
14	081526	STUD - Cam Assembly Support	1
15	***007720	SHAFT ASSEMBLY - Idler	1
16	001784	RING - Retaining, .566 I.D. x .037	6
17	014761	WASHER - 1.000 O.D. x .628 I.D. x .029	4
18	081660	ROLLER ASSEMBLY - Chain Idler	2
19	014608	BUSHING - .754 O.D. x .629 I.D. x .875	1
20	014372	SCREW - Set, 10-32 x 1/4	1
21	081656	CAM ASSEMBLY - Gripper Actuating	1
22	007721	SHAFT - Idler	1

***Not Available As An Assembly

NOTE: All above parts are used for Chain Delivery with Aluminum Frames.