

# Parts Catalog

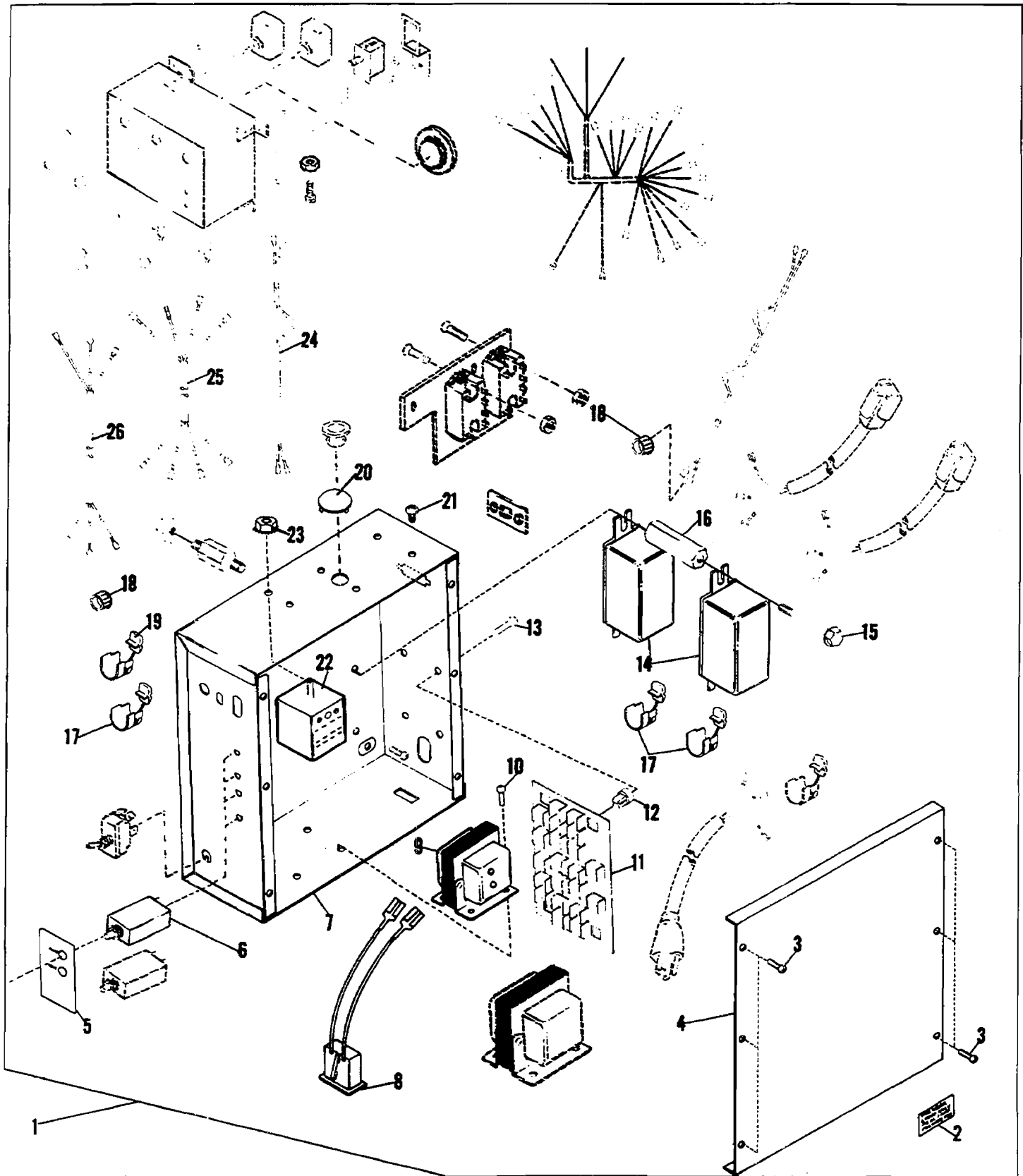


FIGURE 50A  
MODEL 9805/9810 Control and Switch Box Assemblies - Part I

# Parts Catalog

Index No.	Part No.	MODEL 9805/9850 Figure 50A Description	Units Per Assy.
1	018195	CONTROL AND SWITCH BOX ASSEMBLY - 115V. 50/60 HZ. ....	1
1	018319	CONTROL AND SWITCH BOX ASSEMBLY - 220V. 60 HZ. ....	1
1	018320	CONTROL AND SWITCH BOX ASSEMBLY - 240V. 50 HZ. ....	1
1	018322	CONTROL AND SWITCH BOX ASSEMBLY - 220V. 50 HZ. ....	1
2	079609	METAL CAL - Work Lamp .....	1
3	001580	SCREW - Thread Forming, 6-20 x 3/16 .....	6
4	082302	COVER - Control Box .....	1
5	078585	METAL CAL - Circuit Breaker, 115V. ....	1
5	078584	METAL CAL - Circuit Breaker, 220/240V. ....	1
6	250051	BREAKER- Circuit, 10 Amp. 115V. ....	1
6	252537	BREAKER - Circuit, 8 Amp. 240V. ....	2
6	252838	BREAKER - Circuit, 5 Amp. 220/230v. ....	2
7	079087	CONTROL BOX ASSEMBLY .....	1
8	079618	RECEPTACLE ASSEMBLY - 115V .....	1
8	079613	RECEPTACLE ASSEMBLY - 220/240V. ....	1
9	076873	TRANSFORMER ASSEMBLY - T1, 115V. - 24V. ....	1
9	076874	TRANSFORMER - T1, 220/240V. - 24V. ....	1
10	001575	SCREW - 10-32 x 5/16 .....	4
11	079090	TERMINAL BOARD ASSEMBLY .....	1
12	101353	NUT - Expansion, #8 .....	4
13	101162	SCREW -Thread Forming, 8-15 x 1/2 .....	4
14	252477	RELAY - Power D.P.D.T., 24 VAC. ....	2
15	101979	SCREW - 6-32 x 1 3/4 .....	2
16	196650	SPACER - Plastic Hex., 1 3/8 O.A.L. ....	2
17	250293	STRAIN RELIEF - 5/8 O.D. ....	4
18	250200	BUSHING - 1/2 Hole .....	2
19	275000	STRAIN RELIEF - 1/2 O.D. ....	2
20	100520	PLUG - 1/2 Hole .....	1
21	001543	SCREW - 8-32 x 3/16 .....	4
22	252476	RELAY - Control S.P.D.T., 24 VAC. ....	1
23	014812	NUT - 6-32 .....	2
24	079097	CABLE ASSEMBLY - O.S. ....	1
25	079093	CORD ASSEMBLY - Connector, Drive .....	1
26	196118	CORD ASSEMBLY - Connector, Vacuum .....	1