

# Parts Catalog

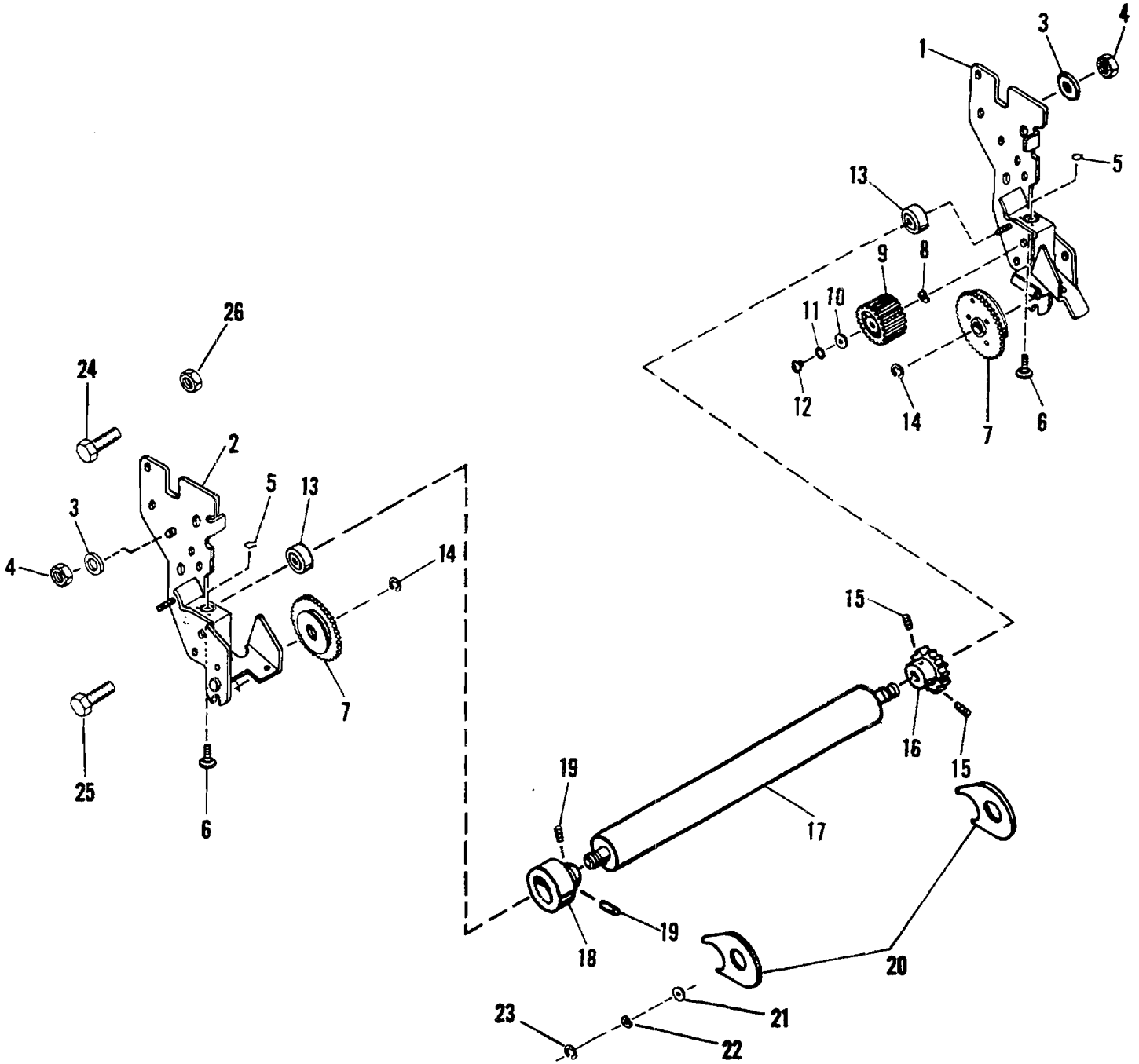


FIGURE 8  
MODEL 9815/9850 Aquamatic - Part II

# Parts Catalog

Index No.	Part No.	MODEL 9805/9850 Figure 8 Description	Units Per Assy.
1	007966	FRAME - N.O.S. ....	1
2	007964	FRAME - O.S. ....	1
3	016572	WASHER - .255 I.D. ....	1
4	003578	NUT - 1/4-20 ....	2
5	001099	RING - Retaining, .283 I.D. ....	2
6	080524	SCREW - Shoulder ....	2
7	012422	DUCTOR GEAR ASSEMBLY ....	2
8	001772	WASHER - Spring, .382 I.D. ....	1
9	082050	GEAR ....	1
10	001750	WASHER - .328 I.D. ....	1
11	004074	WASHER - 9/16 I.D. ....	1
12	064189	SCREW - LOCK ....	1
13	080505	BEARING ....	2
14	001080	RING - Retaining, .302 I.D. ....	2
15	014390	SCREW - Set, 1/4-28 x 1/4 ....	2
16	080599	GEAR ....	1
17	007657	ROLLER - Copper (TD, CD, QP and QPC) ....	1
17	007856	ROLLER - Rubber (PRO) ....	1
18	080591	HOUSING - Bearing ....	1
19	014372	SCREW - Set, 10-32 x 1/4 ....	2
20	080979	SHIELD - Aquamatic, (PRO) ....	2
21	195086	WASHER - Stainless Steel, .513 I.D. x 1.000 O.D. (PRO) ....	2
22	195087	WASHER - Stainless Steel Spring, .520 I.D. (PRO) ....	2
23	101870	RING - Retaining, Stainless Steel .456 I.D. (PRO) ....	2
24	111073	SCREW - 1/4-28 x 5/8 ....	2
25	111074	SCREW - 1/4-28 x 3/4 ....	2
26	150085	NUT - 1/4-28 ....	2