

# Parts Catalog

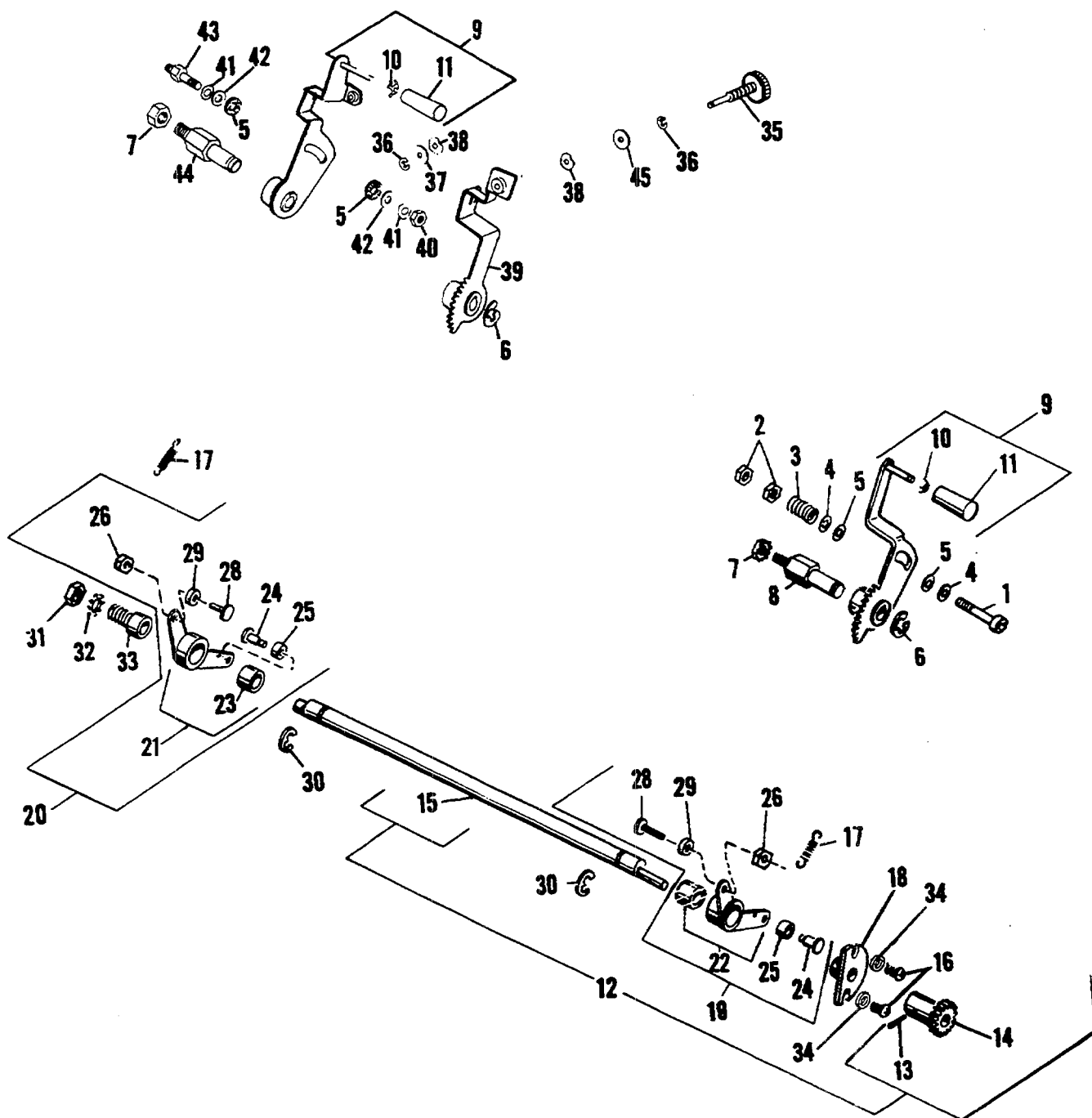


FIGURE 9  
MODEL 9815/9850 Aquamatic Control Lever Assembly

# Parts Catalog

Index No.	Part No.	MODEL 9805/9850 Figure 9 Description	Units Per Assy.
1	014304	SCREW - 1/4-28 x 1-1/2	1
2	001832	NUT- 1/4-28	2
3	072953	SPRING - Compression, 5/16 I.D x 5/8 O.A.L.	1
4	021150	WASHER - .256 I.D.	2
5	014793	WASHER - Friction, 17/64 I.D.	2
6	001080	RING - Retaining. .302 I.D.	1
7	150085	NUT - 1/4-28	1
8	080537	STUD - Aquamatic Control Lever	1
9	016275	LEVER ASSEMBLY - Micro Adjust Dwell Control	1
9	017548	LEVER ASSEMBLY	1
9	018592	LEVER ASSEMBLY - Micro Adjust (9840 B)	1
9	018543	LEVER ASSEMBLY (9840 B)	1
10	072052	LOCK- Spring	1
11	011371	HANDLE - Brown	1
11	017593	HANDLE - (9840 B)	1
12	007662	ECCENTRIC SHAFT AND PINION ASSEMBLY	1
13	000006	PIN - Taper. .582 O.A.L.	1
14	*073246	GEAR - Eccentric Shaft	1
15	*007663	SHAFT - Eccentric	1
16	111068	SCREW - 1/4-28 x 5/16	2
17	040782	SPRING - Tension, .318 O.D. x 1-7/32 O.A.L.	2
18	073252	BUSHING - Eccentric Shaft	1
19	073248	LEVER ASSEMBLY - O.S.	1
20	073250	LEVER ASSEMBLY - N.O.S.	1
21	071567	LEVER - N.O.S.	1
22	071566	LEVER - O.S.	1
23	014605	BUSHING - .566 I.D. x .691 O.D. x .750 O.A.L.	1
24	057507	RIVET	1
25	070125	TRUCK	1
26	014248	NUT - LOCK, 10-32	1
28	190118	STUD - Eccentric	1
29	190103	TRUCK	1
30	001094	RING - Retaining, .394 I.D.	2
31	014805	NUT - 7/16-20	1
32	043097	WASHER - .440 I.D.	1
33	193606	STUD	1
34	021203	WASHER - .255 I.D. x .500 O.D.	2
35	196666	SCREW - Adjusting	1
36	014504	RING - Retaining, .146 I.D. x .027	2
37	196664	WASHER - Spherical	1
38	001742	WASHER - Spring, 13/16 I.D. x .500 O.D.	2
39	016271	LEVER ASSEMBLY - Gear	1
40	001818	NUT - Lock, 1/4-28	1
41	193549	WASHER - Spring, .266 I.D. x .557 O.D.	2
42	191384	WASHER - .260 I.D. x .750 O.D.	2
43	196662	STUD	1
44	196663	STUD	1
45	006776	WASHER - Plain, 3/16 I.D. x 3/8 O.D. x 3/64	1

\*Not Procurable Separately