

Parts Catalog

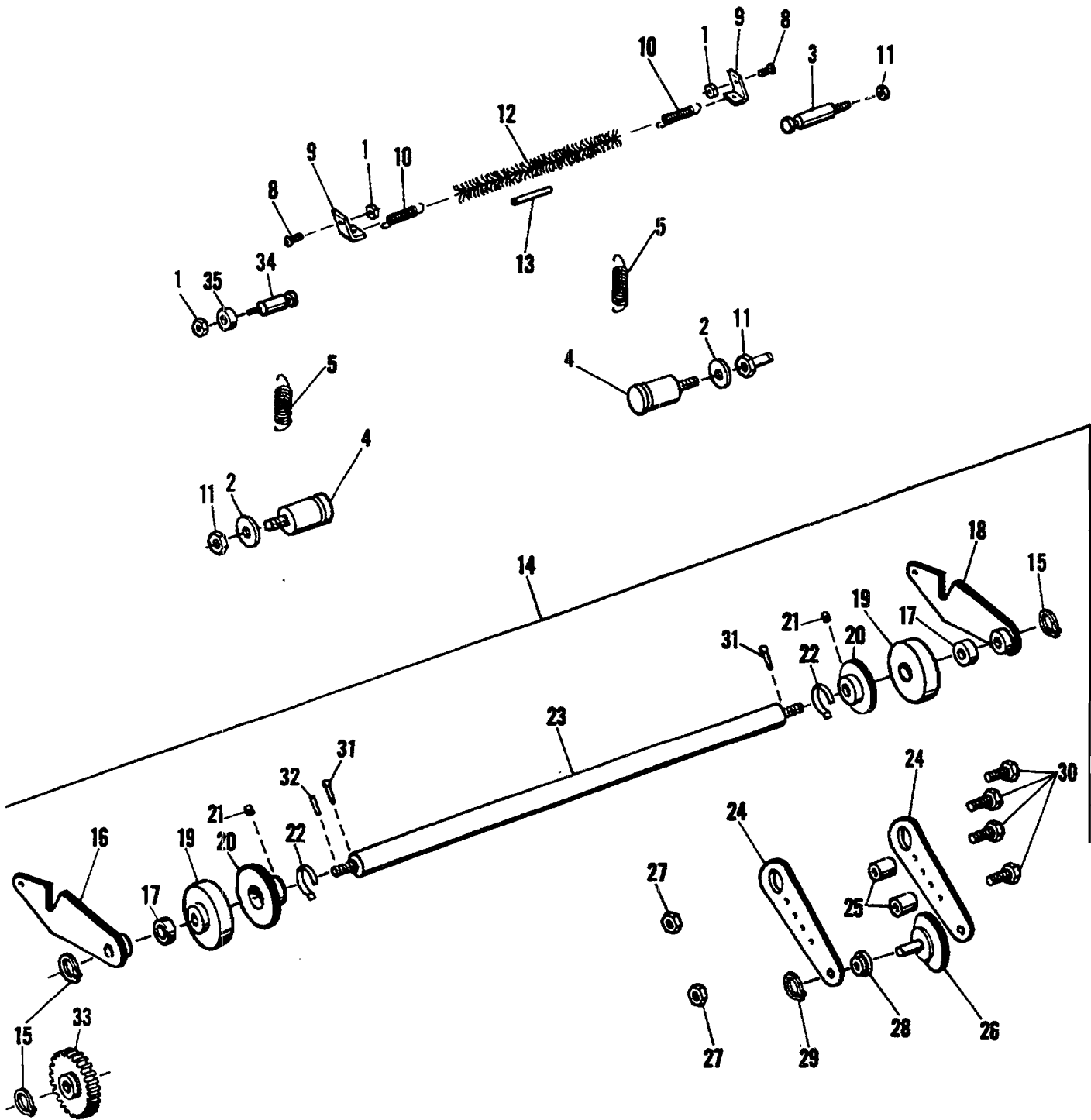


FIGURE 50
MODEL 9815/9850 Adjustable Roller Assembly

Parts Catalog

Index No.	Part No.	MODEL 9805/9850 Figure 50 Description	Units Per Assy.
1	014807	NUT - 1/4-28	3
2	061452	SPACER	2
3	078368	ANCHOR - Spring	1
4	078363	PIVOT - Cradle Arm	2
5	073459	SPRING - Tension, .359 O.D. x 2.062 O.A.L.	2
8	014110	SCREW - 1/4-28 x 1/2	2
9	072347	BRACKET - Tinsel	2
10	050621	SPRING - Tension, .218 O.D. x 1.218 O.A.L.	2
11	150085	NUT - 1/4-28	4
12	****	TINSEL	AR
13	196343	TUBING - Vinyl	1
14	***008290	ROLLERASSEMBLY	1
15	001060	RING - Retaining, .208 I.D. x .527 O.D. x .027	3
16	078367	ARMASSEMBLY - N.O.S.	1
17	001409	BUSHING - .254 I.D. x .379 O.D. x .312 O.A.L.	2
18	078364	ARMASSEMBLY - O. S.	1
19	077866	ROLLER - Hold Down	2
20	013287	ROLLER - Adjustable	2
21	077236	PLUG - Friction	2
22	077117	CLIP - Adjustable Roller	2
23	008289	SHAFT - Adjustable Roller	1
24	013913	BRACKET	4
25	195322	SPACER	4
26	007236	ROLLER - Adjustable, Lower	2
27	014248	NUT - Lock, 10-32	4
28	012913	HUB ASSEMBLY	4
29	101005	RING- Retaining, .397 I.D. x .027	4
30	111059	SCREW - Hex, 10-32 x 1.000 O.A.L.	4
31	100388	PIN - Cotter, .060 O.D. x 1.000 O.A.L.	2
32	100398	PIN - Roll, .103 O.D. x .577 O.A.L.	1
33	076684	GEAR - 24T	1
34	078368	ANCHOR - Spring	1
35	193778	SPACER	1

***Not Available As An Assembly

****Order as supply #670 (2 rolls = 12 yds. or 10.9 M. each)