

Townsend Industries, Altoona, Iowa 50009 ♦ Phone 1-800-247-2262 or 1-515-967-4261 ♦ FAX 1-515-967-7519

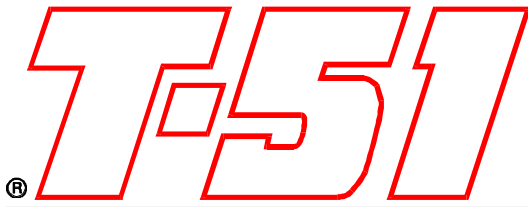
## INSTRUCTIONS FOR REMOVING THE INK DUCTOR ASSEMBLY ON THE T-51 S-1

1. BEGIN WITH THE WATER SYSTEM REMOVED FROM THE PRESS.
2. REMOVE THE INK DUCTOR ROLLER. TURN THE HANDWHEEL UNTIL THE INK OSCILLATOR ROLLER # 1 IS AS FAR TO THE NON OPERATOR SIDE AS IT WILL GO.
3. LOOSEN SET SCREW # 2 AND REMOVE THE COLLARS # 3 FROM BOTH SIDES.
4. UNHOOK THE SPRING # 6 FROM THE PIN # 7. LOOSEN SET SCREW # 4 ON THE DUCTOR PUSH ARM # 5 AND SLIDE IT IN TOWARDS THE CENTER OF THE SHAFT AS FAR AS IT WILL GO. REMOVE THE KEY AND SET IT ASIDE.
5. REMOVE THE "C" CLIP # 8 AND SPRING # 9 FROM THE NON-OPERATORS SIDE OF THE EQUALIZER BAR.
6. CAREFULLY TAP ON THE BUSHING # 10 WITH A SMALL PUNCH UNTIL 2 SCREWDRIVERS CAN BE INSERTED BETWEEN THE BUSHING FLANGE AND THE SIDE FRAME. PULL THE BUSHING OUT OF THE SIDE FRAME USING THE SCREWDRIVERS AND SET THE BUSHING ASIDE.
7. SHIFT THE INK DUCTOR SHAFT # 11 TOWARDS THE NON-OPERATORS SIDE THE MAXIMUM AMOUNT. THE SHAFT SHOULD BE OUT OF THE OPERATOR SIDE FRAME. LOWER THE OPERATOR END OF THE SHAFT #11 AND REMOVE THE DUCTOR ASSEMBLY FROM THE MACHINE.

YOU CAN NOW PERFORM THE NECESSARY WORK ON THE DUCTOR ASSEMBLY PRIOR TO REINSTALLING THE DUCTOR ASSEMBLY BE CERTAIN THAT ANY PARTS YOU MAY HAVE REMOVED FROM THE SHAFT HAVE BEEN REPLACED.

## REINSTALLING THE INK DUCTOR ASSEMBLY ON THE T-51 S-1

1. INSTALL THE NON OPERATOR SIDE OF THE DUCTOR SHAFT # 11 THROUGH THE SIDE FRAME. LIFT THE OPERATOR END OF THE DUCTOR SHAFT UP AND INTO THE OPERATORS SIDE FRAME.
2. INSTALL THE BUSHING # 10 ONTO THE DUCTOR SHAFT AND PRESS THE BUSHING INTO THE SIDE FRAME.
3. INSTALL THE SPRING # 9 AND "C" CLIP # 8 ONTO THE NON OPERATORS SIDE OF THE EQUALIZER BAR.
4. CAREFULLY CENTER THE DUCTOR ASSEMBLY TO THE INK FOUNTAIN ROLLER. INSTALL AND TIGHTEN THE COLLARS # 3 BEING SURE ANY END PLAY IN THE DUCTOR ASSEMBLY HAS BEEN REMOVED.
5. INSTALL THE KEY, SLIDE THE DUCTOR PUSH ARM # 5 INTO POSITION SO THAT THE BEARING # 12 IS CENTERED ON THE DUCTOR LOCKOUT ARM # 13. TIGHTEN THE SET SCREW # 4 AND HOOK THE SPRING # 6 ONTO THE PIN # 7. REINSTALL THE INK DUCTOR ROLLER.



**TECHNICAL**

**TIPS**

Townsend Industries, Altoona, Iowa 50009 ♦ Phone 1-800-247-2262 or 1-515-967-4261 ♦ FAX 1-515-967-7519

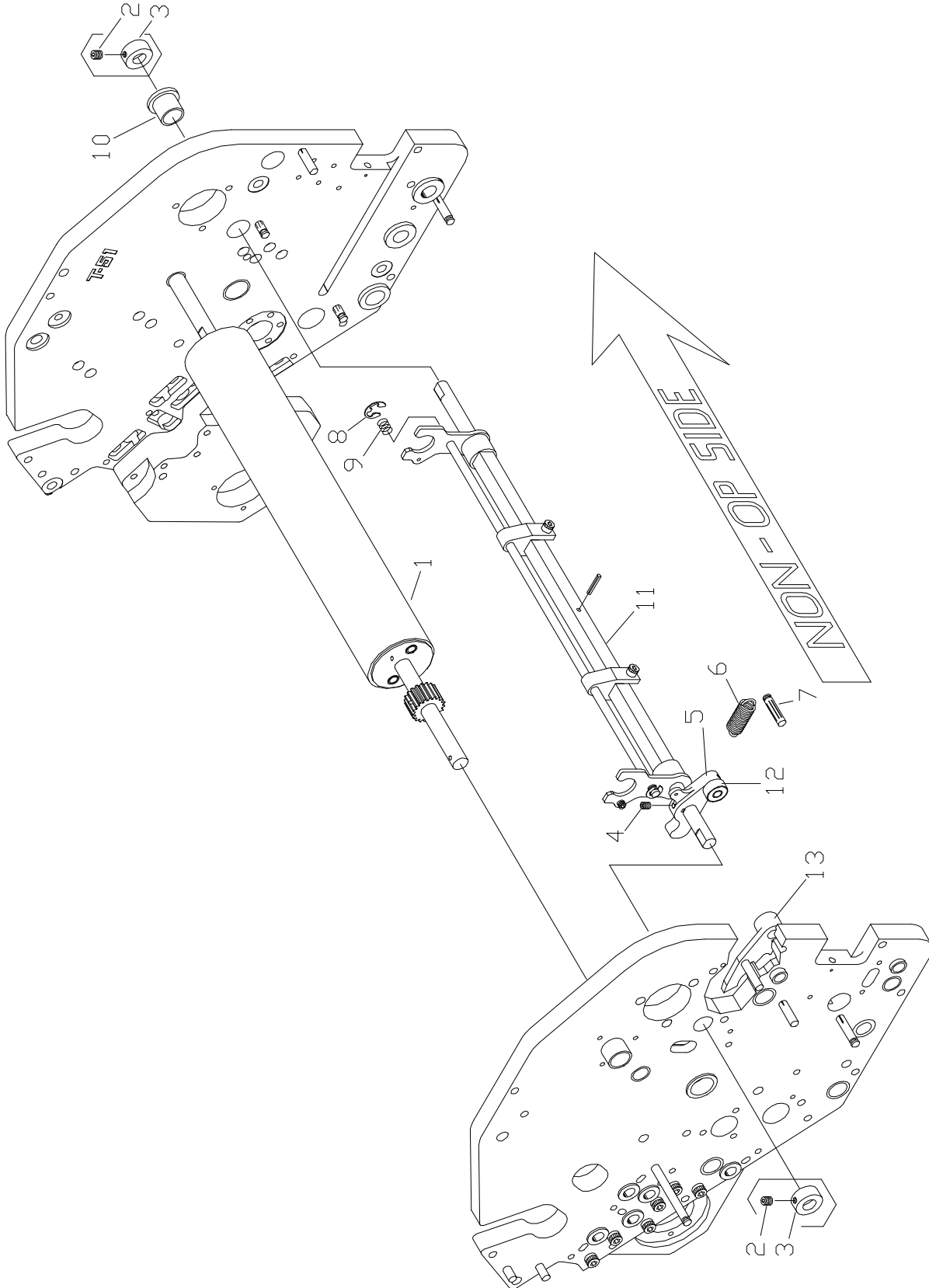


FIGURE 40050