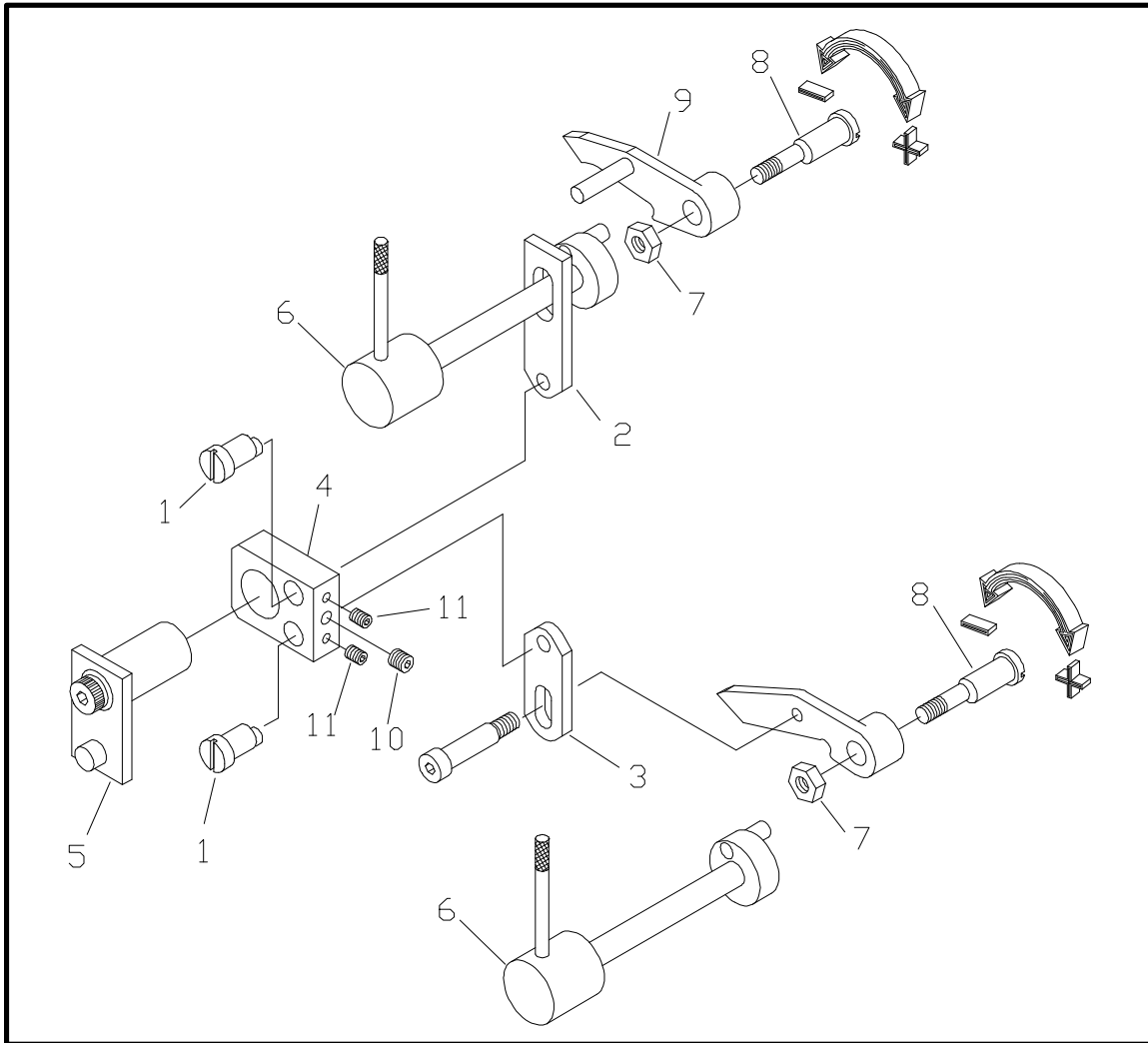


Ductor Lockout Adjustment



1. With the single lever control in the ductor "LOCKOUT" position (fully clockwise), loosen the set screws [11] and rotate the ductor shutoff eccentrics [1] so that the shut off links [2 & 3] are at the bottom of their travel. Loosen the center set screw [10] in the clamp block [4] so that it rotates on the actuator assembly [5]. Both set screws [11] will be tightened in a later step.
2. Rotate the ductor shutoff knobs [6] to their "OFF" positions (clockwise) and rotate the press by hand to check for ductor movement. The ductors should stay locked towards the plate cylinder. If not, loosen the nut [7] and adjust the eccentric screw [8] until the ductor roller does not move. Turning the eccentrics towards the (+) increases the ductor pressure forward. Leave the shutoff knobs in their off positions.
3. With the single lever control in ductor "LOCKOUT" position (fully clockwise), rotate the clamp block [4] counterclockwise until the link [2] stops against the stem on the ink shutoff finger [9]. Lock the center set screw [10] TIGHTLY against the actuator [5].
4. Rotate the ductor shutoff knobs [6] to their "ON" position (counterclockwise). Adjust the screw eccentrics [1] until the ductors stop moving and then tighten the set screws [11].